

Meeting Summary
StateStat website, September 14, 2009

Agency: DPSCS/Division of Corrections (DOC)

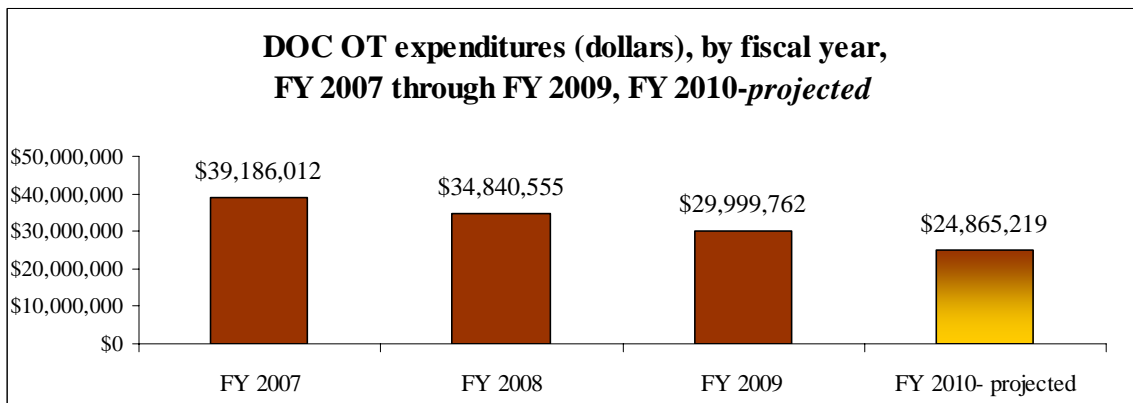
Date of Meeting: September 10, 2009

Template: Vol IV, No. 2

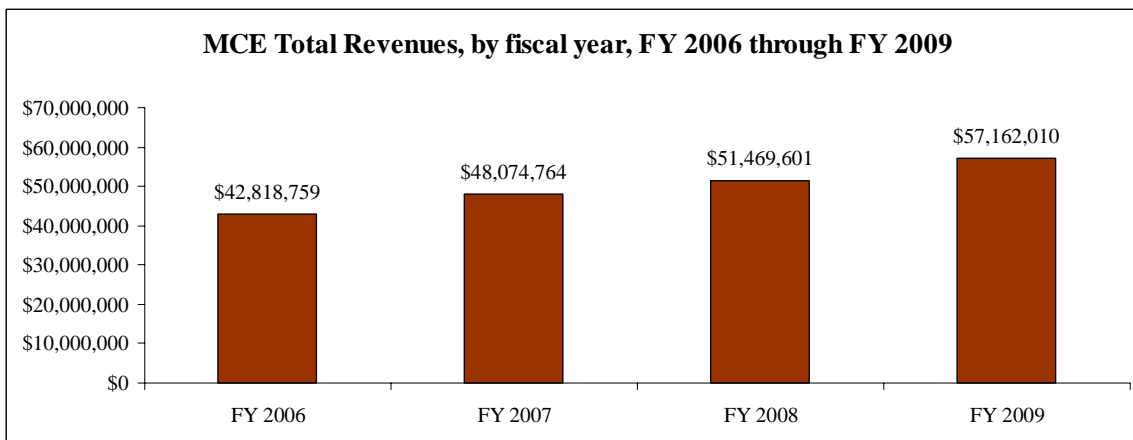
Following is a summary of the issues that were discussed at the DHMH Stat on September 10, 2009. Analysis is provided by StateStat and the Governor's Delivery Unit (GDU).

General Discussion

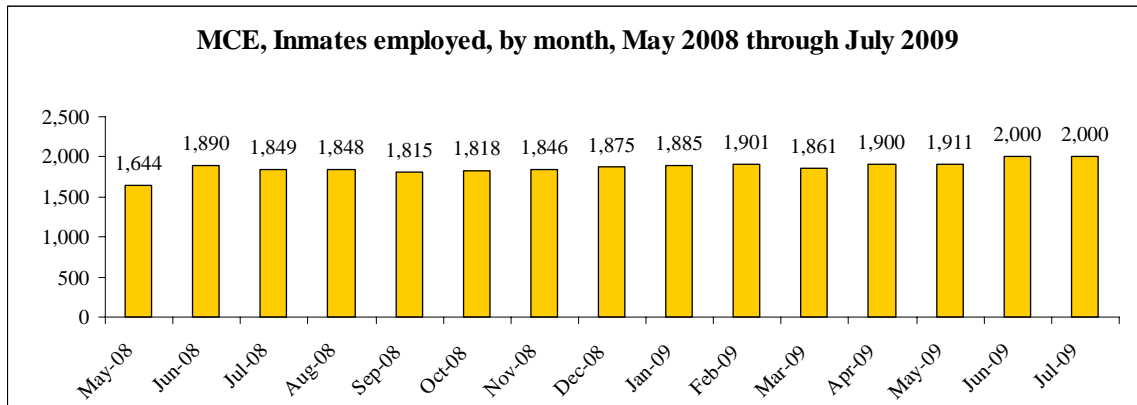
- **Overtime expenditures.** The Division of Corrections (DOC) achieved a \$4.8 million reduction in OT expenditures in FY 2009, as shown in the following chart.



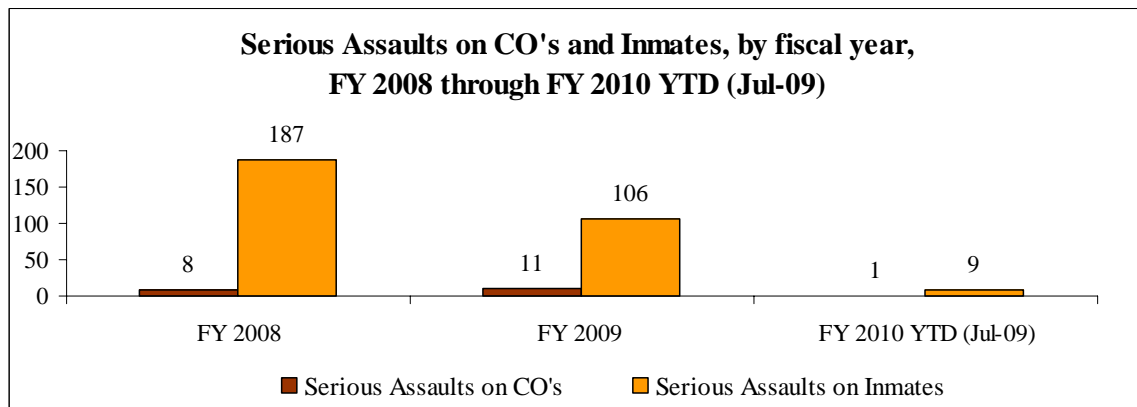
- **MCE revenues and employment.** As shown in the following chart, the Department reported a \$57.1 million in revenue generated by MCE in FY 2009, an increase of \$5.6 million when compared to FY 2008 (\$51.4 million).



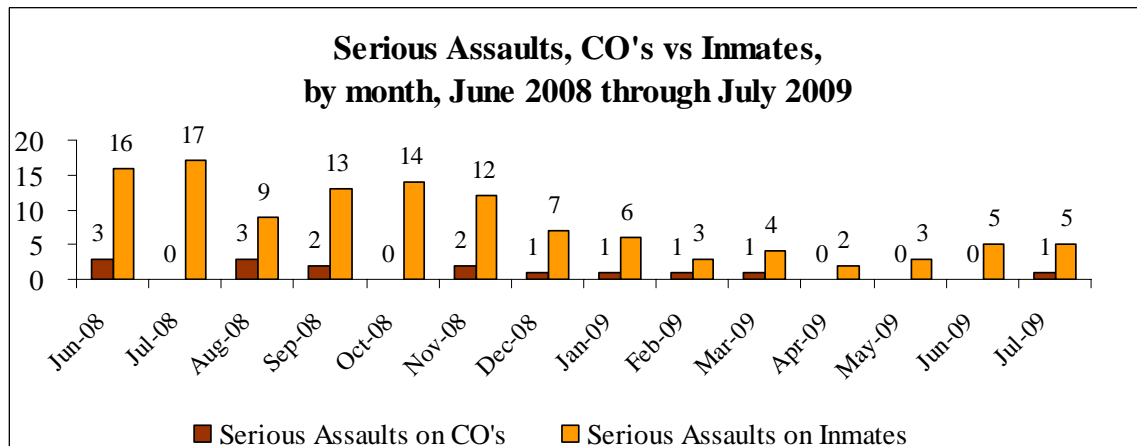
- MCE has employed 2,000 inmates in the last two consecutive months (June and July 2009), its highest total in the last 15 months.



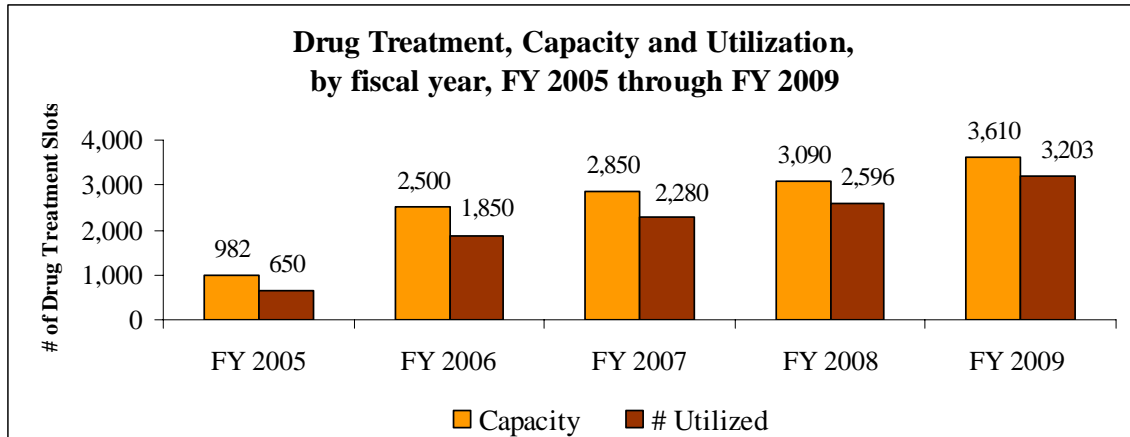
- **Serious Assaults on CO's and Inmates.** As shown in the following chart, the Department achieved a 43.3% reduction in inmate assaults in FY 2009.



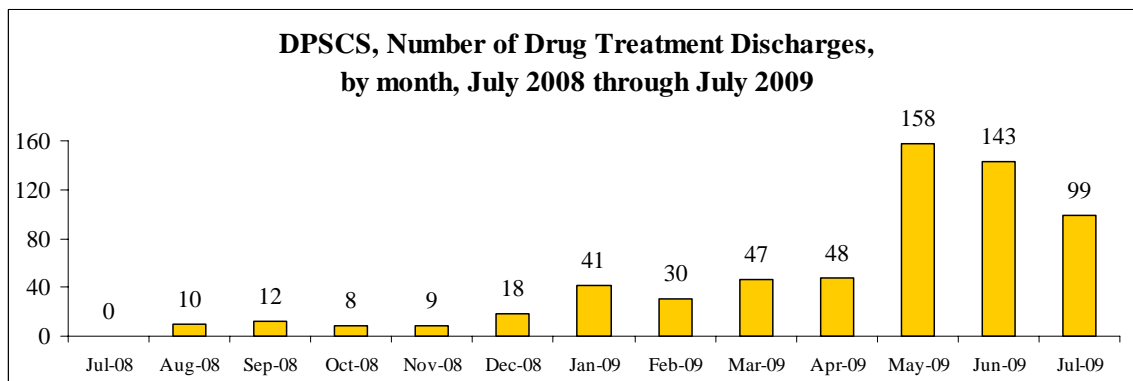
- The Department continues to report continued reductions in assaults on inmates and correctional officers (CO's), as shown in the following chart.



- Drug Treatment.** The Department has worked to expand access to drug treatment services in the correctional setting in recent fiscal years, as shown in the following chart.



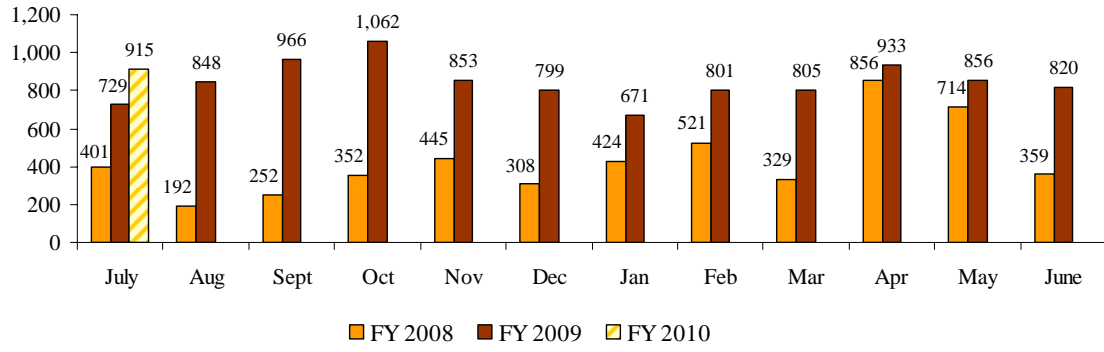
- The Department was asked to comment on the recent increases in drug treatment discharges in recent months, as shown in the following chart.



- HIV Testing.** The Department has increased access to HIV testing by 96.8% in FY 2009, as shown in the following table and chart.

DPSCS HIV Testing, by fiscal year		
FY 2008	FY 2009	% Change
5,153	10,143	96.8%

HIV Testing, by month, FY 2008 vs FY 2009 vs FY 2010



Update on GDU Items

- Following is an update on GDU items.
- The Department was asked to comment on the slight decrease in inmate ID production in May 2009, as shown in the following chart. DPSCS has been asked to comment on this issue at the next DPSCS Stat.

