

Meeting Summary  
 StateStat website, October 7, 2009

**Agency:** MDOT-MAA

**Date of Meeting:** September 18, 2009

**Template:** Vol II, No. 2

Following is a summary of the issues that were discussed at the MAA Stat on September 18, 2009. Analysis is provided by StateStat.

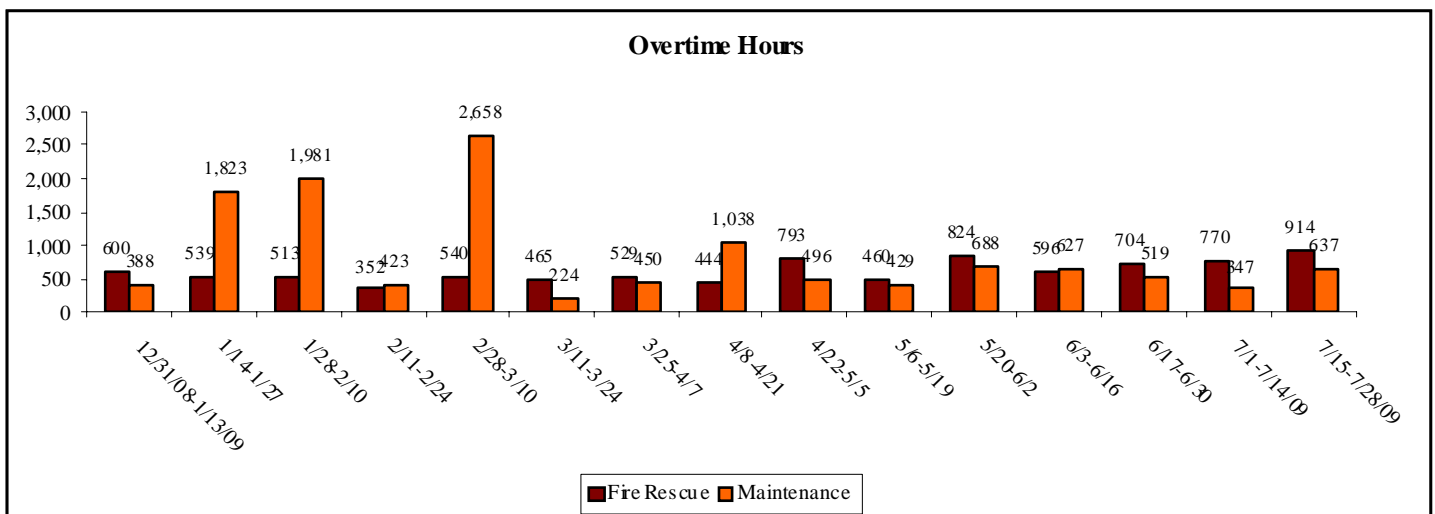
**General Discussion**

- **Procurement.** The following tables show MBE spending for MAA, FY09 total and FY10 spending as of July 2009.

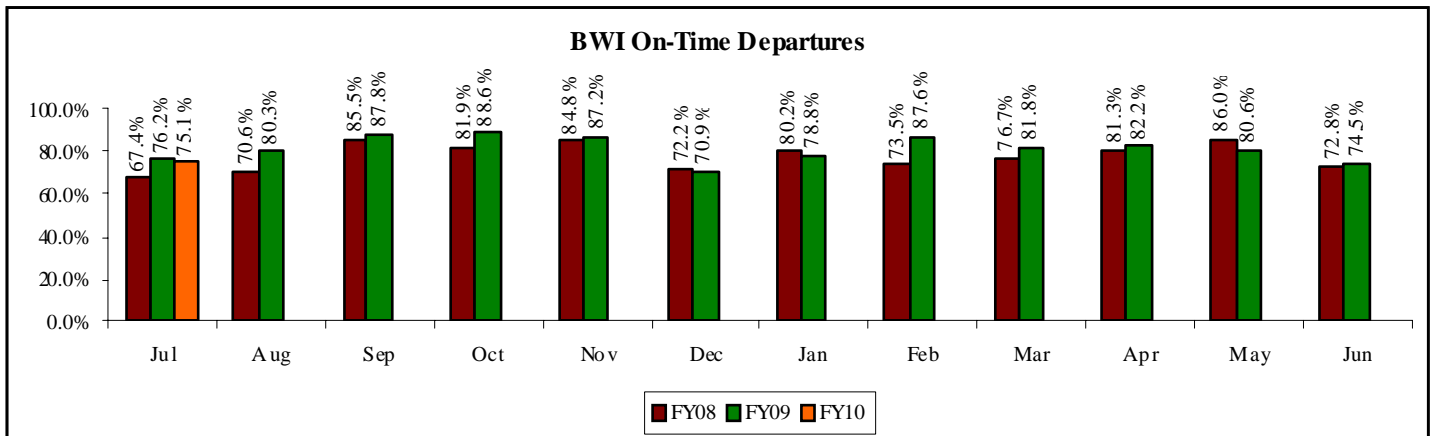
MAA Contract Award Totals, FY 2009									
Total Awards		MBE Total		Ethnic		Women		Disabled/Non-profit/ sheltered workshop (other)	
Dollar Amt.	%	Dollar Amt.	%	Dollar Amt.	%	Dollar Amt.	%	Dollar Amt.	%
\$173,147,613	100%	\$63,185,351	36.5%	\$25,859,688	14.9%	\$8,147,420	4.7%	\$29,178,242	16.85%

MAA Contract Award Totals, FY 2010 YTD (through July 2009)									
Total Awards		MBE Total		Ethnic		Women		Disabled/Non-profit/ sheltered workshop (other)	
Dollar Amt.	%	Dollar Amt.	%	Dollar Amt.	%	Dollar Amt.	%	Dollar Amt.	%
\$1,256,798	100%	\$200,832	16.0%	\$0	0.0%	\$19,063	1.5%	\$181,769	14.46%

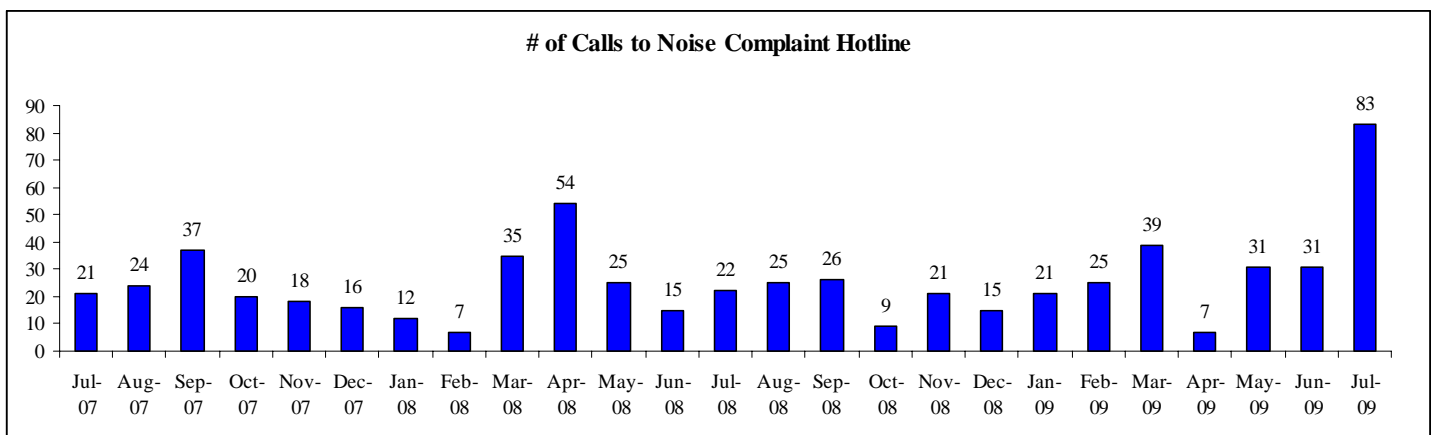
- **Overtime.** The following chart highlights the increase in overtime. MAA stated that this increase was due to a vacancy in fire rescue.



- General Operations.** According to MAA’s template, BWI is serving more customers and they have been able to increase the percentage of on-time departures as shown in the following chart.



- Noise Complaints.** The number of calls to the noise complaint hotline reached an all-time high during July 2009. MAA stated that the increase was due to multiple complaints by the same callers.



**Airport News**

- JetBlue.** JetBlue Airways launched its non-stop service from BWI to Boston’s Logan with 4 daily flights. AirTran currently has 9 daily round-trip flights, and Southwest has 5 daily round-trip flights. The route marks one of the first times on a non-Florida route that the nation's three largest low-cost carriers will go head-to-head between the same airports. Customers can take advantage of JetBlue’s partnership with Cape Air, to fly onward to destinations such as Hyannis, Martha’s Vineyard, Nantucket, and Killington.
- JetBlue has pledged \$5,000 to the National Aquarium in support of their conservation and animal care programs in and around the Chesapeake region.
- AirTran.** AirTran announced that there will be no more direct flights from Vermont to Baltimore until May 2010. Tuesday, September 15th was the last direct flight that will be offered in 2009. They are switching to

a seasonal service due to the economy. The Burlington Airport has petitioned AirTran to continue service to Baltimore year round and is hopeful that this will change.

- **Southwest Airlines.** Southwest Airlines, BWI's largest carrier, plans to cut 12 flights to Baltimore in early 2010 while adding four as part of a wider move that the company says will keep service in equilibrium with demand. The reductions, effective Jan. 9, will bring the airline to about the same number of flights that it operated at BWI last January. Southwest had 149 flights at BWI last January. Next year's reduction will put the airport at 150 flights per day. Southwest had 163 regularly scheduled flights this summer.
- **Proposed Closure of Communications Center.** Maryland Aviation Administration officials discussed the close of the communications center at BWI Thurgood Marshall Airport due to budget cuts. Eight staffers, including operators who can deliver announcements in Arabic, French, Spanish, German and Flemish, will lose their jobs. This will save the state \$450,000 a year.
- Officials said separated passengers usually use cell phones to find one another and the automated system for the airport's 800 number answers most callers' questions. Airlines can still page errant passengers and announce flight departures. Information booth volunteers and airport personnel still have access to the paging system for emergencies.