

Meeting Summary
 StateStat website, September 28, 2009

Agency: DPSCS/Division of Corrections (DOC)

Date of Meeting: September 24, 2009

Template: Vol IV, No. 3

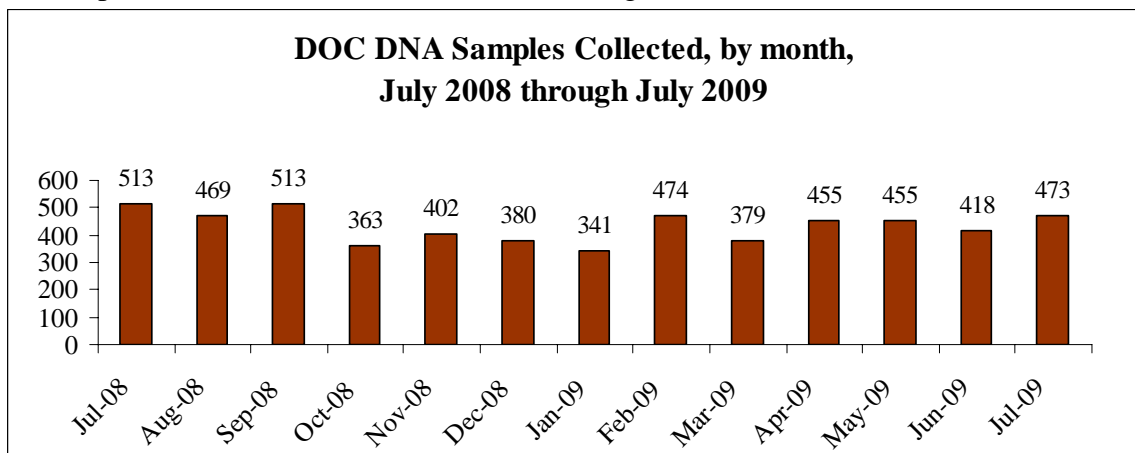
Following is a summary of the issues that were discussed at the DPSCS/DOC Stat on September 24, 2009. Analysis is provided by StateStat and the Governor’s Delivery Unit (GDU).

General Discussion

- **Overtime expenditures.** The Division of Corrections (DOC) continues to achieve substantial reductions in OT expenditures in FY 2010, as shown in the following table.

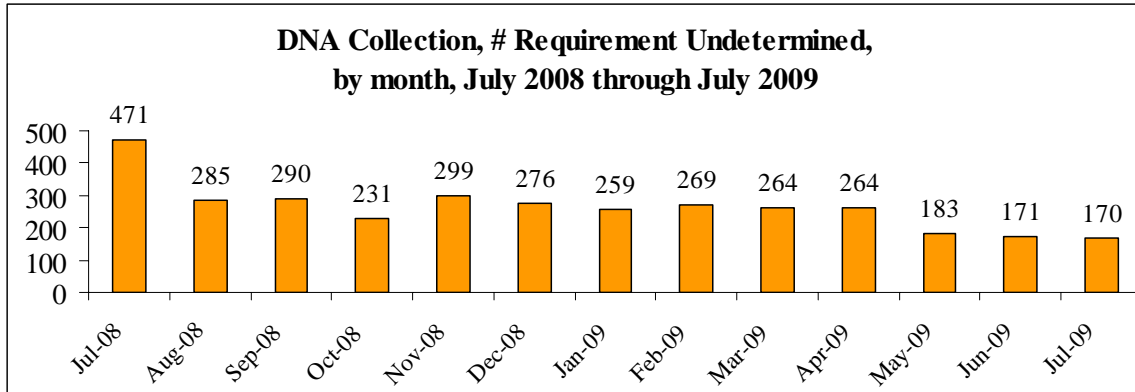
DOC OT Expenditures, by pay period, by fiscal year, 2008 vs 2009 vs 2010				
	<i>7/3/07</i>	<i>7/17/07</i>	<i>7/31/07</i>	<i>8/14/07</i>
FY 2008	\$1,348,937	\$1,150,904	\$1,348,472	\$1,450,762
	<i>7/1/08</i>	<i>7/15/08</i>	<i>7/29/08</i>	<i>8/12/08</i>
FY 2009	\$1,564,594	\$1,627,531	\$1,569,877	\$1,691,773
	<i>7/14/09</i>	<i>7/28/09</i>	<i>8/11/09</i>	<i>08/25/09</i>
FY 2010	\$960,076	\$894,004	\$937,120	\$856,929
Difference, 2009 vs 2010	-\$604,518	-\$733,528	-\$632,757	-\$834,844

- **DNA collection.** The Department commented on its process of collecting DNA samples from inmates, shown in the following chart.

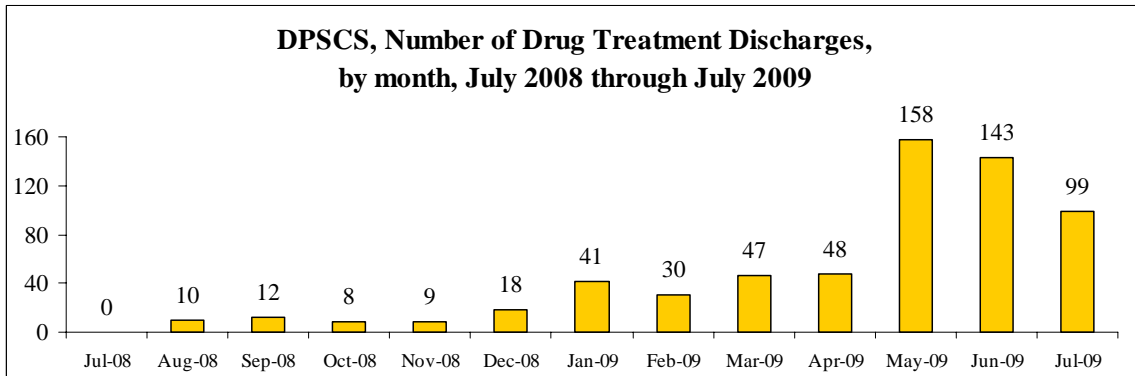


- The Department was asked to comment on the “# requirement undetermined” of DNA samples (when DOC does not determine whether a DNA sample needs to be

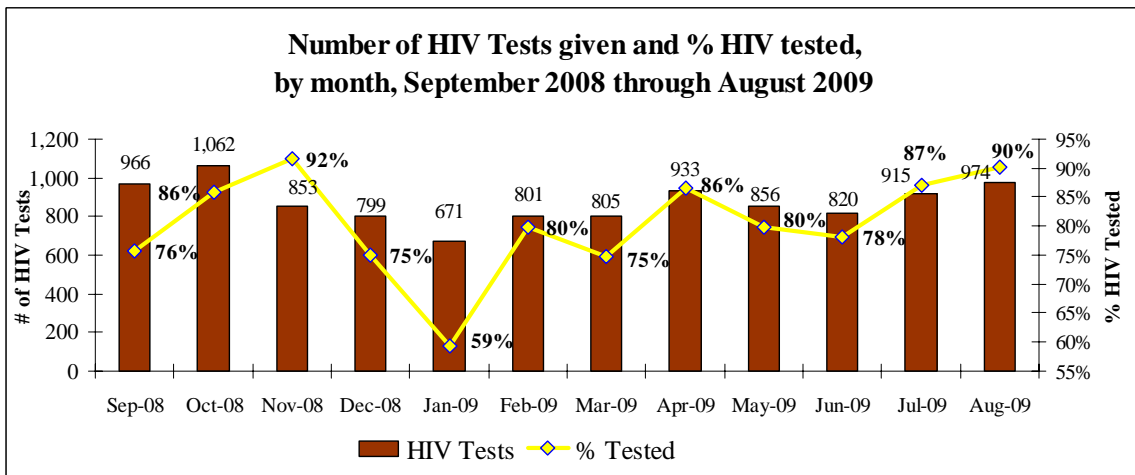
collected), shown in the following chart, and was directed to investigate the IT system used by DPDS at CBIF to help facilitate DNA collection efforts.



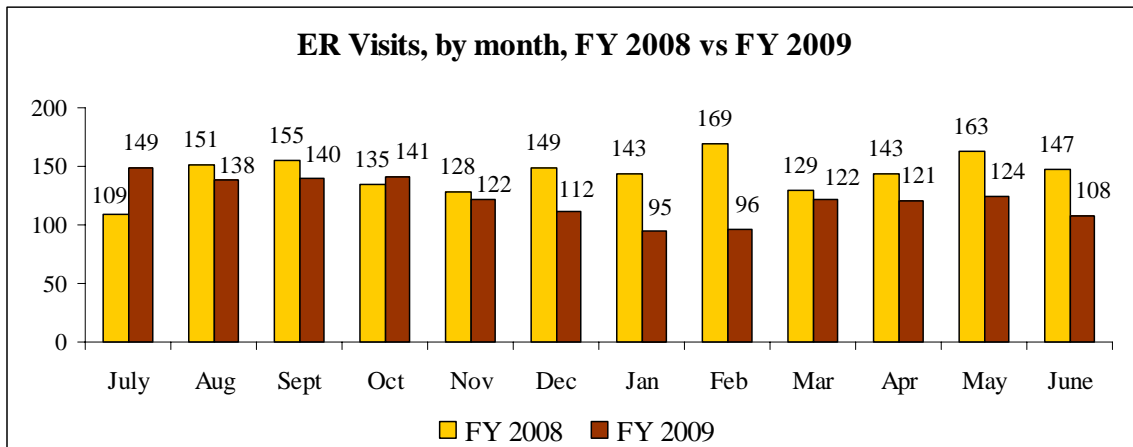
- Drug Treatment.** The Department commented on the recent increases in discharges in drug treatment programs, and ways to encourage increases in successful completions.



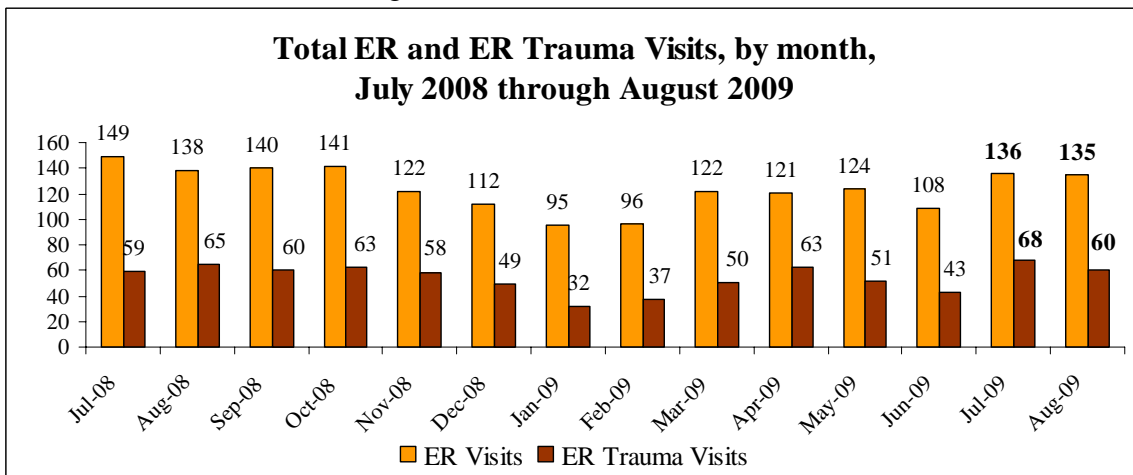
- HIV Testing.** The Department comment on HIV testing, as shown in the following chart.



- ER visits.** The Department reported a 14.7% *decrease* in the total number of ER visits from FY 2008 (1,721) to FY 2009 (1,468), as shown in the following chart.



- Despite positive trends in FY 2009, DOC reported modest *increases* in ER and ER trauma visits in July and August 2009 (FY 2010), as shown in the following chart, and was directed to investigate these recent increases.



Update on GDU Items

- Following is an update on GDU items.
- The Department commented on the recent increases in generating inmate IDs, as shown in the following chart.

Inmate IDs, Pre and Post-Release, by month

