

Meeting Summary  
StateStat website, November 6, 2009

**Agency:** DPSCS/Division of Corrections (DOC)

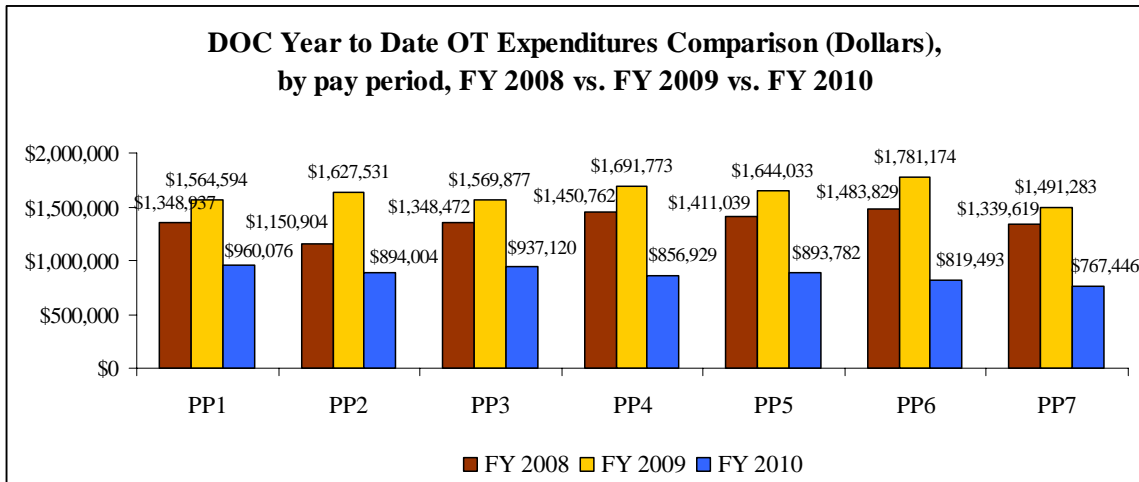
**Date of Meeting:** November 5, 2009

**Template:** Vol IV, No. 9

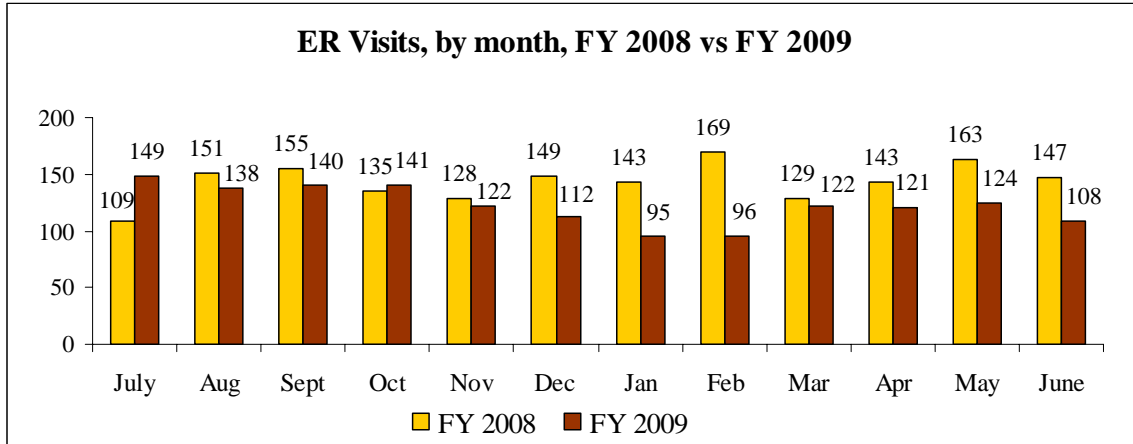
Following is a summary of the issues that were discussed at the DPSCS/DOC Stat on November 5, 2009. Analysis is provided by StateStat and the Governor's Delivery Unit (GDU).

**General Discussion**

- **Overtime expenditures.** The Division of Corrections (DOC) continues to achieve substantial reductions in OT expenditures in FY 2010, as shown in the following chart.

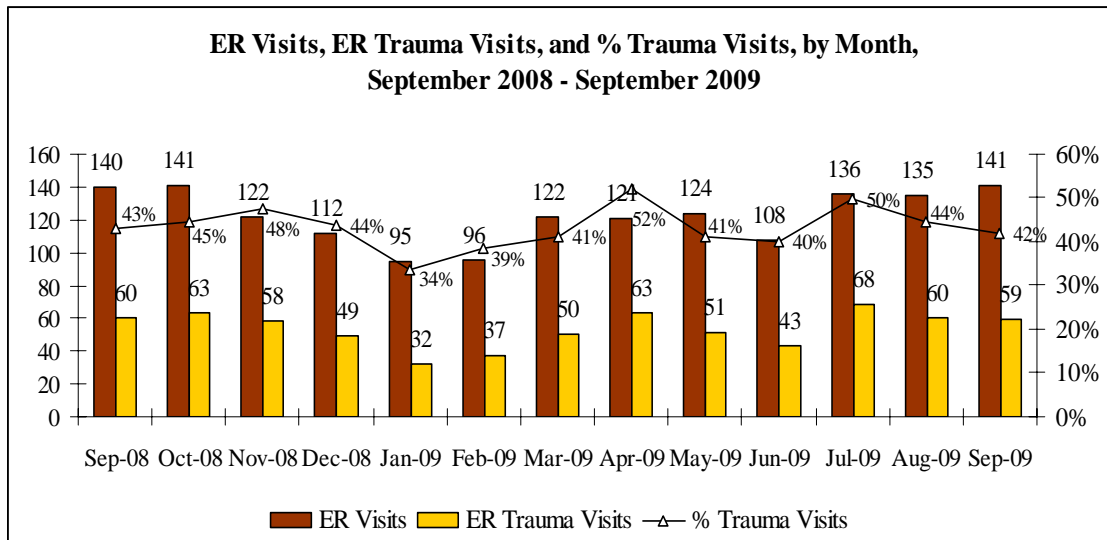


- Data indicates that OT expenditures have reduced approximately 50% when compared with FY 2009 expenditures over the same pay periods.
- **ER visits.** The Department achieved dramatic reductions in the overall number of ER and ER trauma visits in FY 2009, as shown in the following chart and table.



ER and ER Trauma Visits, FY 2008 vs FY 2009			
	FY 2008	FY 2009	% Change
ER Visits	1,721	1,468	-14.7%
ER Trauma Visits	827	630	-23.8%

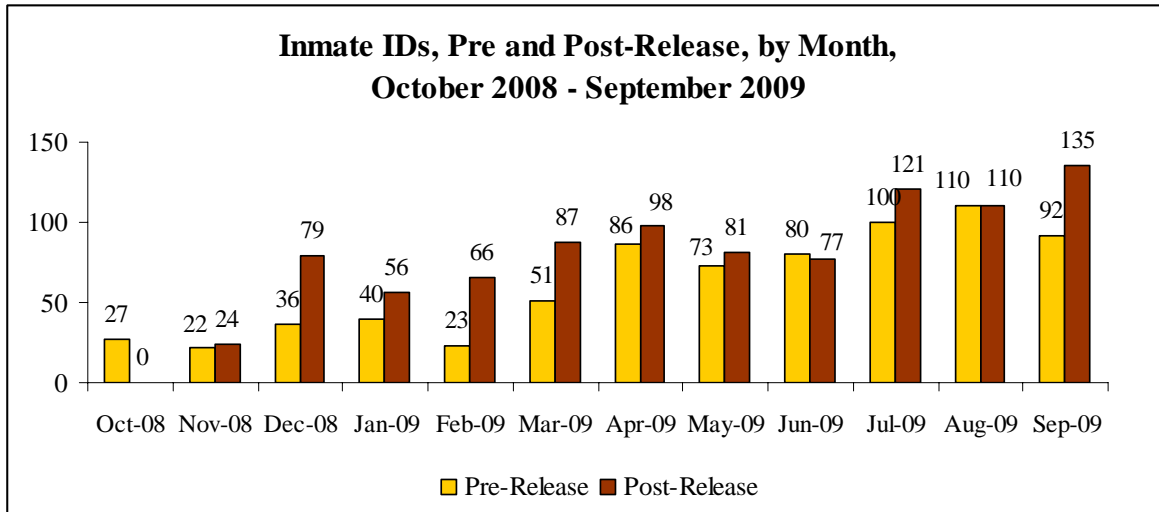
- Despite these positive trends in FY 2009, recent data in FY 2010 reflects an *increase* in ER and ER trauma visits between July and September 2009, as shown in the following chart.



- The Department reported that trauma it is investigating GI and accidental trauma cases and implementing new procedures to reduce the impact of ER trauma visits, and expects these will impact overall days in the next months.

## Update on GDU Items

- Following is an update on GDU items.
- The Department commented on the recent increases in generating inmate IDs, as shown in the following chart.



Inmate IDs, by month, type and location												
MVA Bus IDs Issued	Oct-08	Nov-08	Dec-08	Jan-09	Feb-09	Mar-09	Apr-09	May-09	Jun-09	Jul-09	Aug-09	Sep-09
Brockbridge	27	22	36	40	23	51	43	33	30	48	57	44
Metropolitan Transition Center							43	40	50	52	53	48
Baltimore Area Facilities												
<b>MVA Bus Pre-Release IDs Total</b>	27	22	36	40	23	51	86	73	80	100	110	92
<b>MVA Post-Release Branch IDs Issued</b>	0	24	79	56	66	87	98	81	77	121	110	135
<b>Total MVA IDs Issued</b>	27	46	115	96	89	138	184	154	157	221	220	227

- September showed a record number of IDs issued since the program began in October 2008.