

Meeting Summary
StateStat website, December 14, 2009

Agency: DPSCS/Division of Corrections (DOC)

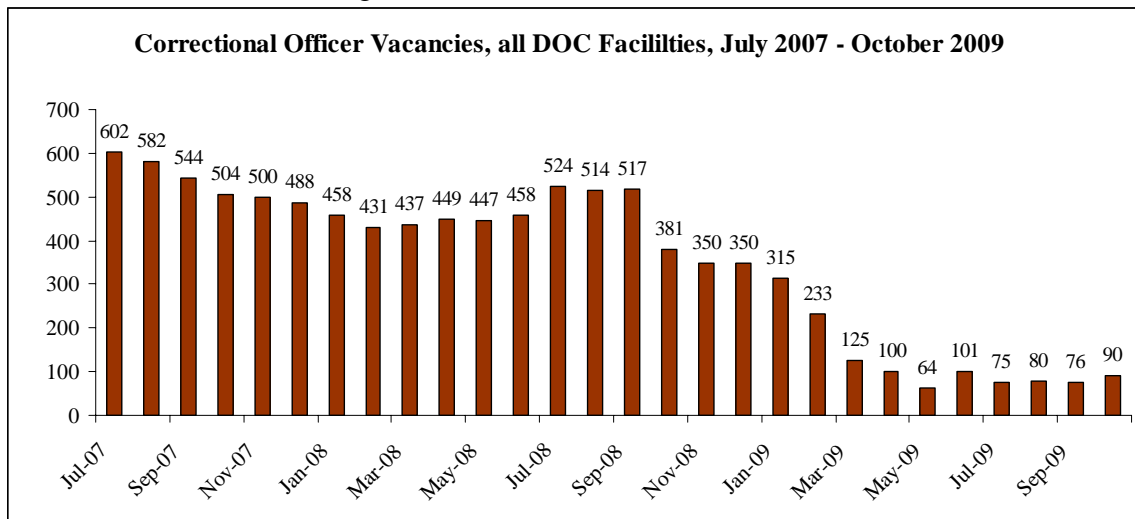
Date of Meeting: December 10, 2009

Template: Vol IV, No. 11

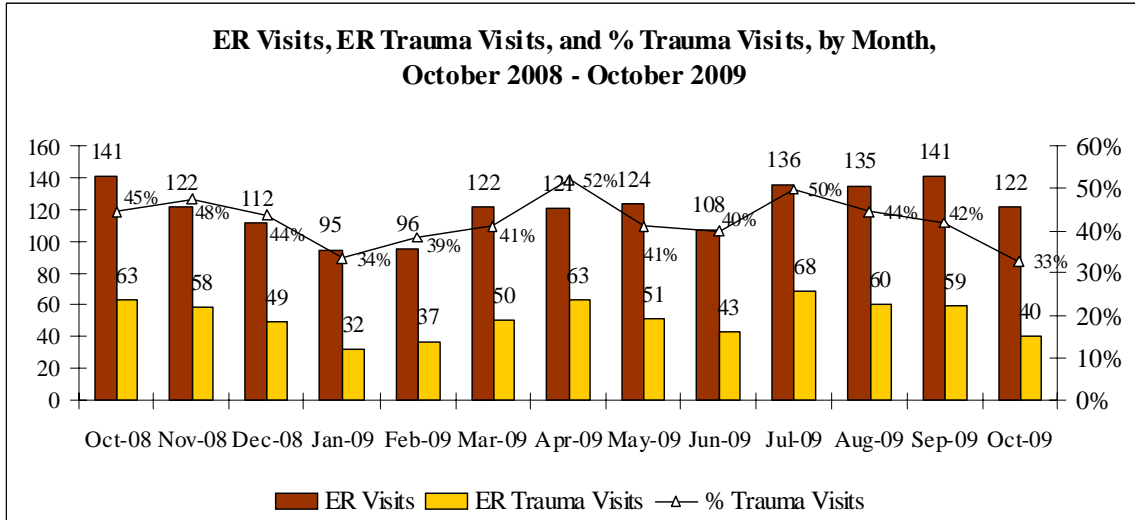
Following is a summary of the issues that were discussed at the DPSCS/DOC Stat on December 10, 2009. Analysis is provided by StateStat and the Governor's Delivery Unit (GDU).

General Discussion

- **Sick Leave.** The Department provided the results of its overtime review from the previous meeting. Although sick leave did increase, the Department noted no significant levels of concern regarding an outbreak of illness or sick leave abuse.
- Furthermore, the Department performed an analysis of sick leave usage as compared to overall personnel. The Department's effort to reduce correctional officer vacancies is shown in the following chart:



- The Department's analysis confirmed that increased sick leave is largely due to more filled positions. When sick leave per employee is calculated, the Department showed progress in reducing sick leave on a per-capita basis.
- **ER visits.** Recent months have shown a marked increase in ER visits and ER trauma visits. However, the most recent data indicates a decline in DOC inmate ER visits, as shown in the following chart:



- The Department noted that increased review of cases and of pre-decision procedures have helped decrease overtime visits and costs.