

Meeting Summary
StateStat website, January 20, 2010

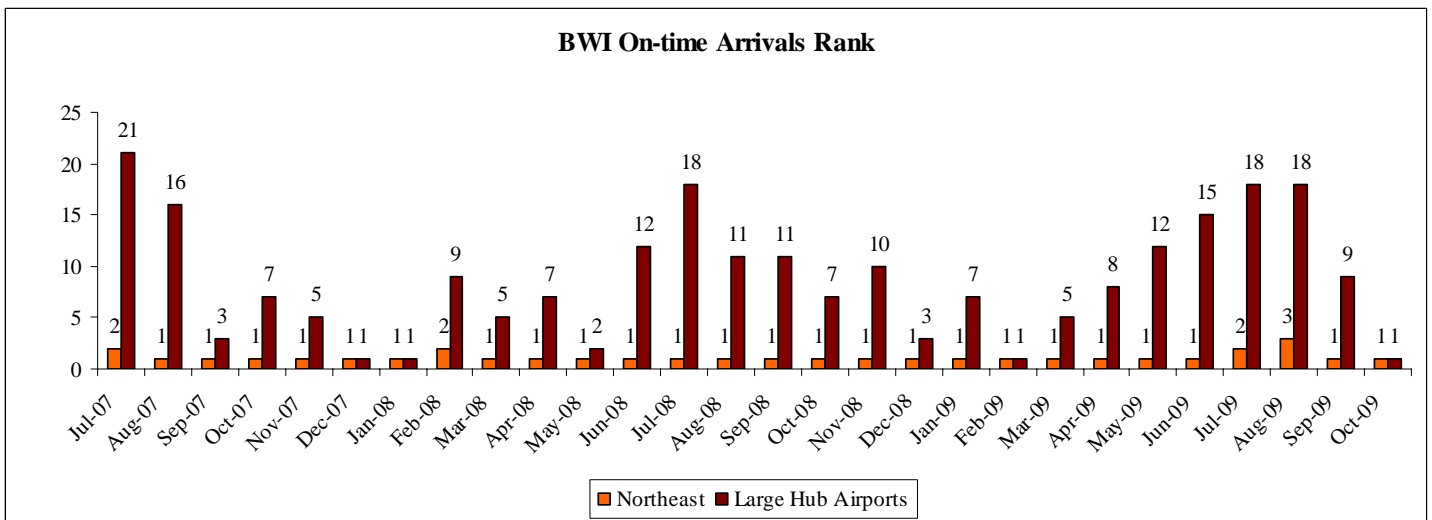
Agency: Maryland Aviation Administration (MAA)

Date of Meeting: December 11, 2009

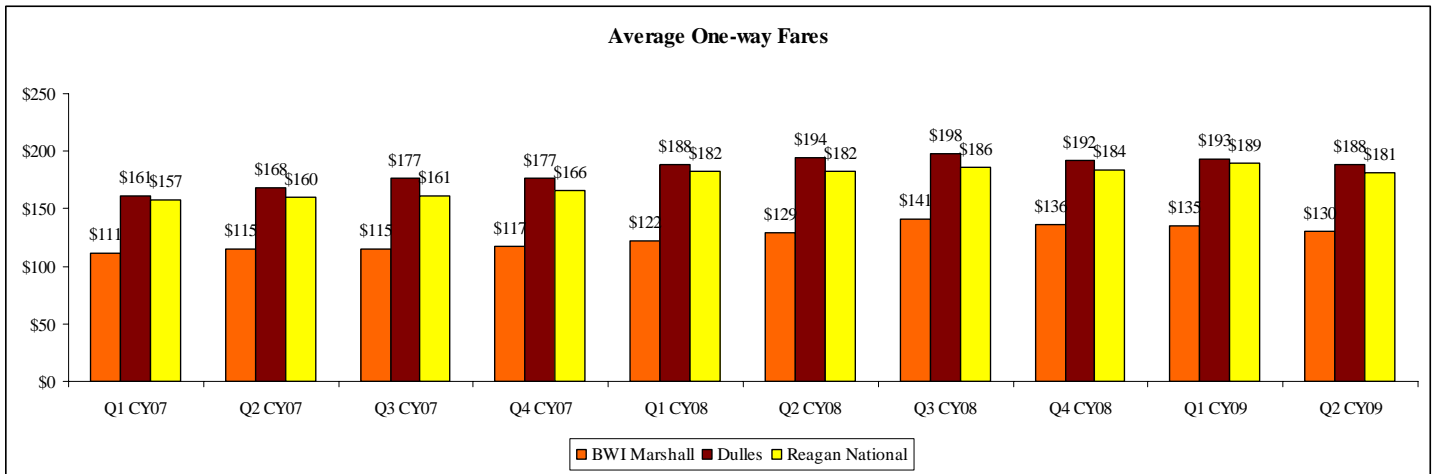
Following is a summary of the issues that were discussed at the MAA Stat on December 11, 2009. Analysis is provided by StateStat.

General Discussion

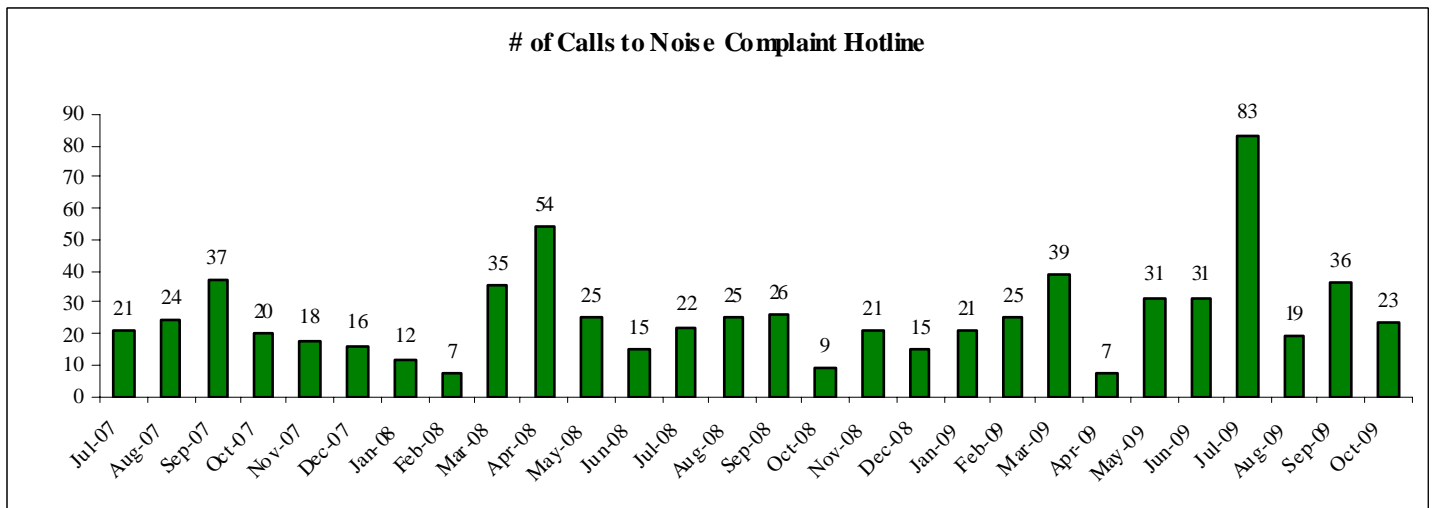
- **Arrivals.** BWI's on-time arrivals rank compared to other large hub airports and in the Northeast is #1 for the first time since February 2009. The panel may wish to ask MAA to comment on how they were able to achieve this rating.



- **Fares.** BWI's fares continue to be much lower than that of Dulles and Reagan.



- **Noise Complaints.** The number of calls to the noise complaint hotline has been much lower since July, but saw an increase in September.



Airport News

(Suggested Discussion Length: 15 Minutes)

- **Baggage Screening.** BWI Airport Received \$3.2M Grant for New Baggage Screening Technology Baltimore, Maryland. The typical traveler through the airport likely won't see the results of the new improvements. But the new grant will help make the Baltimore Washington International airport more convenient and efficient for travelers.
- The grant will assist with technology that screens checked baggage. The funds from the grant will help to pay for new conveyor lines and to create new screening areas. Changes will also be implemented to create a safer working environment for employees checking screened baggage.

- **AIRMALL.** The AIRMALL® at BWI has joined forces with Google and Boingo Wireless, Inc. this holiday season to provide passengers with free Wi-Fi from now through January 15th at the airport. Passengers can access this complimentary Wi-Fi service by clicking on the "Boingo Hotspot" within the airport or visiting the Boingo Wireless, Inc. home page, where this special offer will appear. Passengers may simply click on it and proceed to the Internet.
- At the same time, the AIRMALL® has opened a flu shot clinic and is administering shots to passengers every Tuesday and Thursday from 7 a.m. through 7 p.m. now through December 10th. The AeroClinic, located in Concourse A/B next to Sunglass Hut and Concourse D at Gate D1, will offer vaccines for the seasonal flu for \$40.00 and the H1N1 vaccine (when available) for \$22.00.
- **AirTran.** Beginning December 17, AirTran launches the first phase of its Caribbean expansion at BWI, with new nonstop service to Nassau, Bahamas Airport (NAS). AirTran will fly the BWI-NAS route four times per week, with Boeing 717 aircraft. Flights to Nassau will leave BWI at 9:50am and arrive at 12:22 on Tuesday, Thursday, Saturday, and Sunday. Return flights from Nassau to BWI will leave NAS at 1:02pm and arrive at 3:34 on the same days.
- On February 11, 2010, AirTran will add Jamaica's Montego Bay Sangster International Airport (MBJ) to its list of destinations from BWI. AirTran will fly its signature Boeing 737s daily on the BWI-MBJ route. Flights will leave BWI at 8:55am and arrive at MBJ at 12:19pm. The return flight will leave MBJ at 3:30pm and land at BWI at 6:58pm. Currently, Air Jamaica flies the BWI-MBJ route. The Montego Bay and Nassau flights are subject to final government approval.
- In a move that puts AirTran squarely into the football rivalry between Washington and Baltimore; AirTran unveiled its latest logo jet, Ravens 1. The custom-painted purple and black Boeing 717 jet joins Falcons 1 as the newest additions to the AirTran fleet, reflecting the carrier's partnerships with several National Football League teams. AirTran will unveil Colts 1 later this year.
- **FlightView Expansion.** BWI selected FlightView, its trusted partner for in-terminal displays of flight and weather tracking, to bring the same technology to a newly upgraded Web site. The airport launched the new features from FlightView on October 15th that helps passengers fly in and out smoothly. Successful flight tracking displays in all of the BWI terminals already give BWI patrons the answers to the most stressful queries in travel: where is my plane? What's causing the delay? Now, travelers coming in and out of BWI can get real-time, actionable updates on flight arrivals and departures – from their computer or smartphone by simply logging on to www.bwiairport.com.
- FlightView's custom tracking map, data, and updates were integrated into the new site in less than a month. The flight tracking tool and status updates blend seamlessly with the Web site's interface, contributing to a simple, understandable display. With the addition of precise weather radar overlays, site visitors don't need to navigate away from the page to gain a comprehensive view into their flight status.
- **Southwest's Expansion.** Southwest Airlines has announced the carrier is opening its schedule for travel beginning March 14, 2010, through May 7, 2010. As part of this new schedule, Southwest is adding an additional 18 daily nonstop flights to its schedule at Baltimore/Washington International (BWI) Airport beginning March 14, 2010. These new flights are a result of projections for higher demand as the airline

moves closer to spring. The panel may wish to ask if these flights will be to new destinations or the same destinations with more flights daily.

- **JetBlue.** JetBlue announced yet another daily flight on the saturated low-cost route between Boston and BWI. JetBlue entered the market against rivals AirTran and Southwest Airlines in early September with four daily trips, and will add one more on March 1.
- AirTran already offers nine daily trips from Boston-Logan to BWI and Southwest has five more. So, to make things even more competitive/unprofitable, Southwest will be adding two more flights on the route for a daily total of seven. That's 21 low-fare flights on a single route, the most of any city-pair outside of Florida.