

Meeting Summary
StateStat website, January 15, 2010

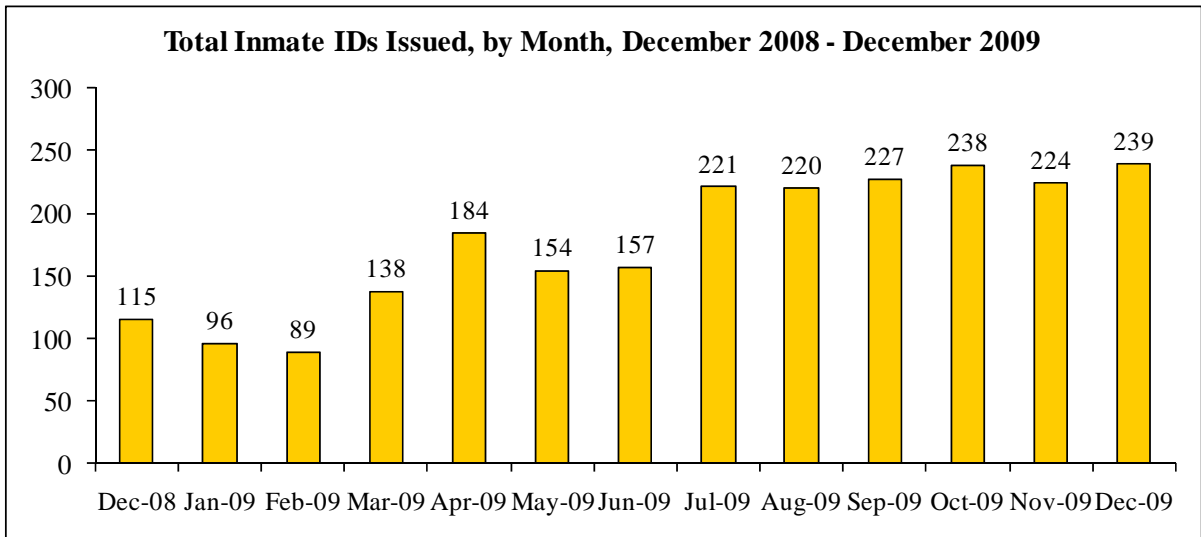
Agency: DPSCS/Division of Corrections (DOC)

Date of Meeting: January 14, 2010

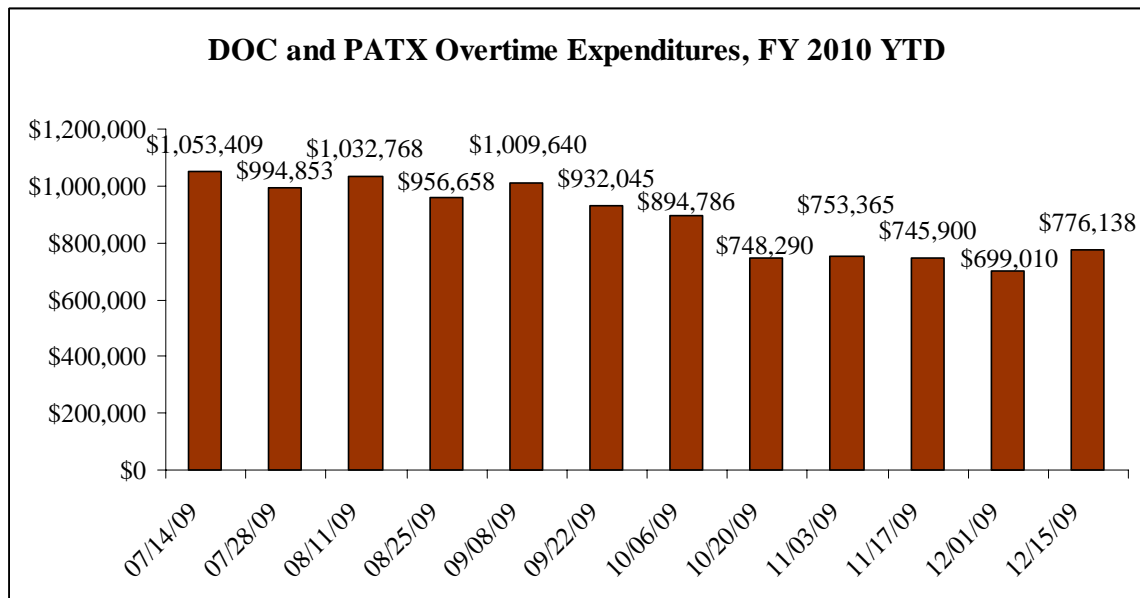
Following is a summary of the issues that were discussed at the DPSCS/DOC Stat on January 14, 2010. Analysis is provided by StateStat and the Governor’s Delivery Unit (GDU).

General Discussion

- **Correctional Education.** StateStat, DLLR, and DPSCS are in the process of further revising the Correctional Education template in an effort to capture the most useful data. The new template is expected in February, and StateStat reviewed the results of recent meetings with DLLR and DPSCS to update both agencies and determine next steps.
- In addition, StateStat and DPSCS discussed communications between DOC wardens and Correctional Education principals.
- **Inmate IDs.** The inmate ID program seeks to provide DOC inmates who are scheduled for release with a free state ID at the time of their release (pre-release ID), or alternately, with the documentation necessary to receive a free ID within the first 60 days of the release (post-release ID). Providing inmates with IDs allows them to find work and reduces recidivism.
- Since October 2008, when the program began, the Department has made significant strides in providing inmate IDs, as shown in the following chart:

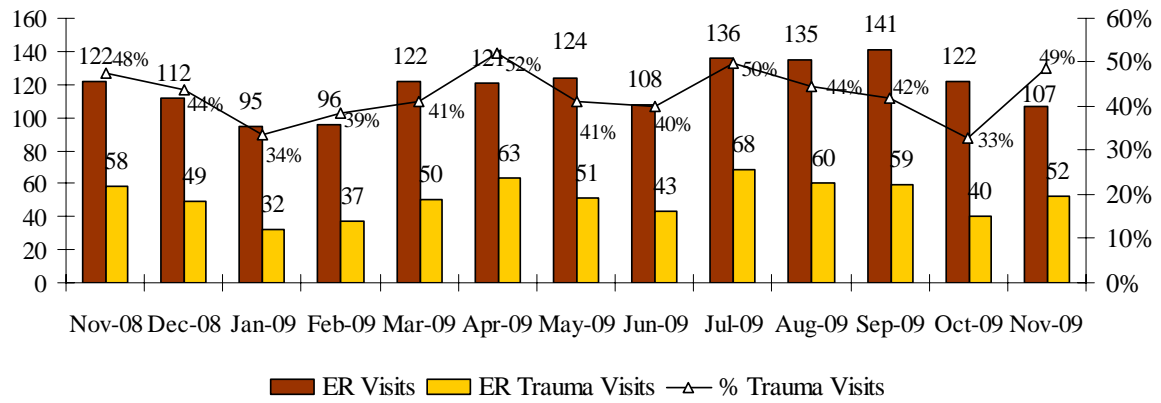


- The panel and Department discussed upcoming efforts to increase inmate ID issuance, including education campaigns with inmates and community partners. In addition, technical issues regarding internet connections at prisons, which are used to process IDs via the MVA bus, were briefly discussed.
- **Overtime.** The Division of Correction appears to be on track to decrease overtime in this fiscal year, and the Department noted the results of recent analysis. The Division noted that a major snowfall or emergency could slightly impact current overtime projections:

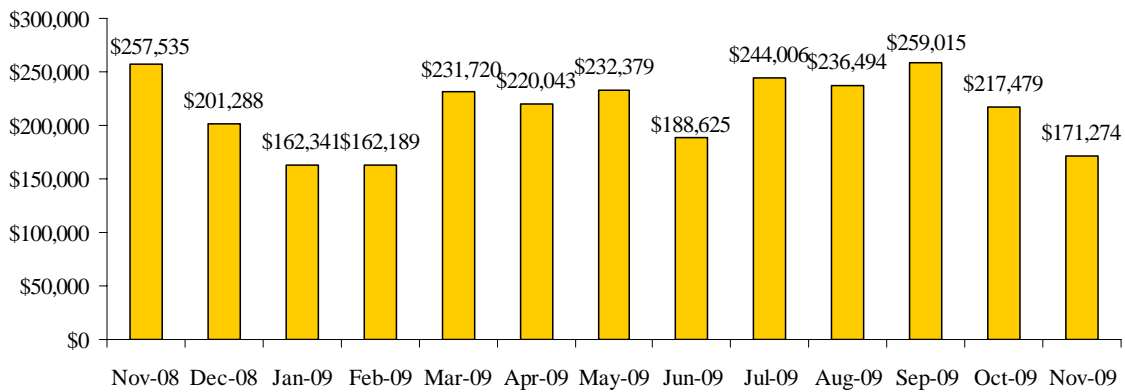


- **Offender Treatment Services.** Due to increasing emergency room costs for inmates and increasing visits for assaults, the Division implemented a review of ER visits and related decisions to improve triage decisions and determine if any cost savings were available. Based on this review, overall ER visits and ER cost per inmate have dropped significantly in October and November 2009, as shown in the following charts:

ER Visits, ER Trauma Visits, and % Trauma Visits, by Month, November 2008 - November 2009



Total ER Cost, by month, November 2008 - November 2009



Cost Per ER Visit, by Month, November 2008 - November 2009

