

Meeting Summary

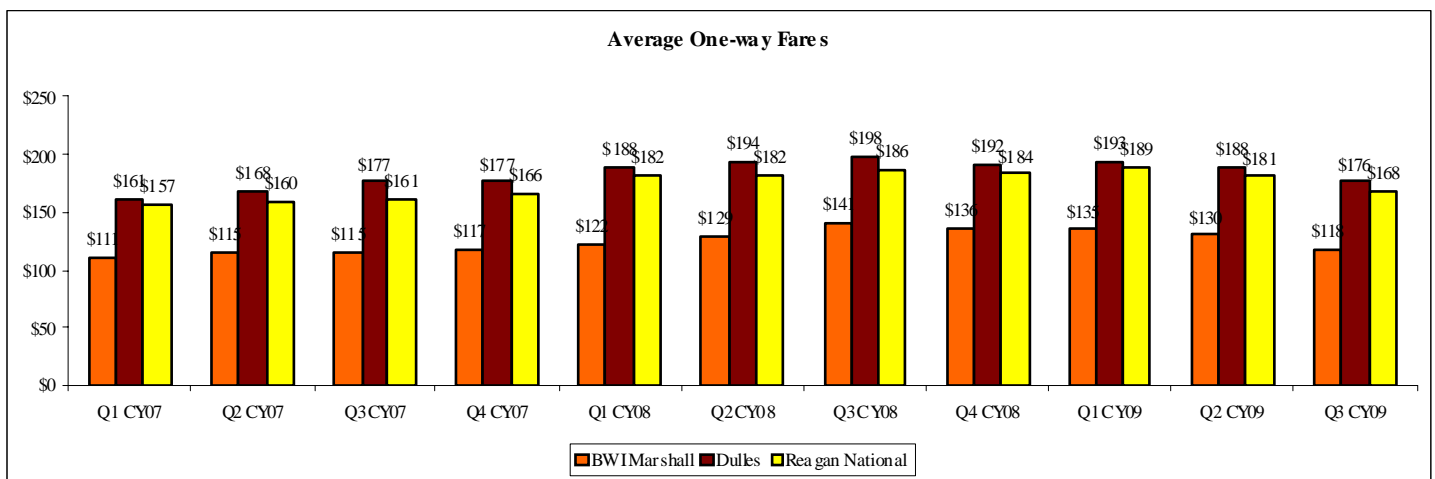
StateStat website, February 22, 2010

Agency: Maryland Aviation Administration (MAA)

Date of Meeting: February 19, 2010

Following is a summary of issues discussed at the MAA Stat on February 19, 2010. Analysis is provided by StateStat.

- **Fares.** BWI's fares continue to be much lower than that of Dulles and Reagan.



Airport News

(Suggested Discussion Length: 15 Minutes)

- **Ski Resort Helps BWI Remove Snow.** A crew from Liberty Mountain Resort and Conference Center took a "snow day" to assist Baltimore/Washington International Thurgood Marshall Airport with snow recovery efforts. After back-to-back storms that dropped record breaking amounts of snow on the area, the Airport and the Federal Aviation Administration asked the resort to help clear snow near important navigational equipment.
- Mechanics and operators from Liberty brought a PistenBully 600 ski slope and trail grooming vehicle to BWI Marshall Airport to help clear snow near the Airport's Runway 10-28 glideslope antenna. The glideslope is a critical component of an Instrument Landing System (ILS), the ground-based technology that provides precision guidance to aircraft approaching and landing on airport runways. The ILS is particularly needed for aircraft operations during poor weather. The heavy snow at the airport affected the accuracy the glideslope technology.
- **BWI Ranked Top Airport in the World for its Size.** Baltimore/Washington International Thurgood Marshall Airport ranked first in the world for airports of its size. The 2009 Airports Council International's airport service quality survey put BWI at the head of the pack for airports serving 15-25 million passengers

a year. The rankings were the result of more than 275,000 questionnaires completed by passengers at 118 airports worldwide. Respondents were asked to rate the airports based on more than 30 services parameters, including cleanliness, food and retail facilities and restrooms.

- BWI was the only airport in the U.S. to nab the top spot in all of the five airport sizes ranked. Hong Kong International Airport was named the No. 1 airport in the category of 40 million passengers a year. Austin-Bergstrom International Airport in Texas took the top spot as best airport in North America.
- **Increase in Passengers.** More than 1.7 million passengers flew into or out of Baltimore/Washington International Thurgood Marshall Airport in November, a 13 percent increase in traffic through the airport from November 2008.
- The spike represented the sixth straight month of year-over-year increases in passenger traffic at BWI, driven by low-cost carriers Southwest Airlines and AirTran Airways
- **Southwest Expansion.** Southwest Airlines is significantly expanding its presence at BWI Airport, taking advantage of a region whose travel market remains healthy despite the recession. Southwest, the largest carrier at BWI, will offer 181 nonstop daily flights beginning May 9, up from its current 157. That will be the largest number of flights it has offered at BWI since it started service there with 10 flights on Sept. 15, 1993. Most of the added flights will be to current stops, but the airline will also soon fly from BWI to Panama City, Fla.
- Meanwhile, nearby competitors Reagan National and Dulles International have reported declines in air traffic. Southwest, which has 53 percent of the flights at BWI, did not make the schedule changes because of the competition.
- Southwest employs about 2,500 workers at the airport and is the largest carrier, controlling about 52 percent of the airport's total passengers. Southwest began service at BWI on September 15, 1993, with 10 daily nonstop departures to two cities, Chicago and Cleveland.
- **AirTran.** AirTran Airways began new nonstop service at the beginning of February between Jacksonville International Airport (JAX) and Baltimore-Washington International Thurgood Marshall Airport (BWI).
- Southwest Airlines currently offers three flights per day from JAX to BWI. Beginning May 4, AirTran Airways will add two additional daily flights with business class service to the market.