



MARTIN O'MALLEY
GOVERNOR

STATE HOUSE
100 STATE CIRCLE
ANNAPOLIS, MARYLAND 21401-1925
(410) 974-3901
(TOLL FREE) 1-800-811-8336

TTY USERS CALL VIA MD RELAY

Meeting Summary

Agency: DLLR

Date of Meeting: May 11, 2010

Following is a summary of issues discussed at the DLLR Stat on March 11, 2010. Analysis is provided by StateStat and the Governor's Delivery Unit (GDU).

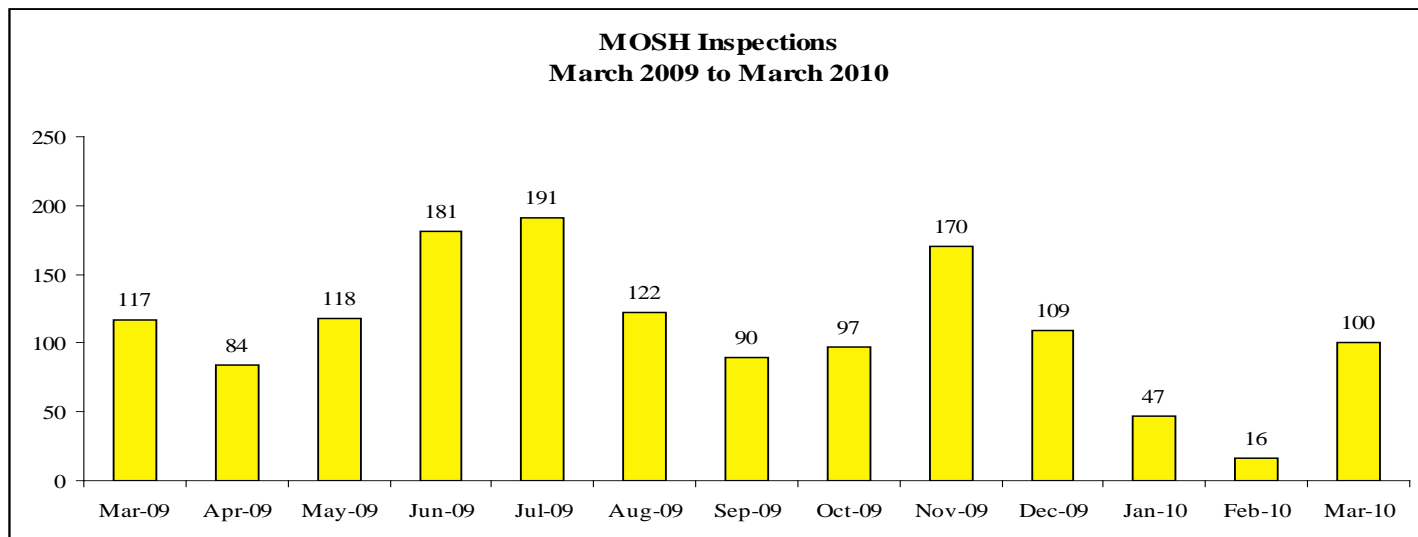
(Suggested Discussion Length: 0 Minutes)

- The following issues are highlighted:
- Follow-up Items
- GDU Goals Summary
- Unemployment Insurance Issues
- Labor and Industry Issues

Follow Up Items

- **UI Overpayments.** According to the follow up response, DLLR will add to next month's template the percentage of benefits paid out that are overpayments and the number/dollar amount of overpayments that are due to fraud. DLLR is pursuing applicable use of Federal TOP for benefit overpayments, specifically those overpayments due to fraud, through a pilot federal tax refund intercept initiative program. DLLR plans to work directly with the Comptroller on the pilot program, which will allow states to offset overpayments with Federal income tax refunds. Presently, the US Department of Treasury is awaiting an implementation plan from the US Department of Labor (USDOL). Treasury must then review and approve the plan. The target date for the debts to be loaded in the TOP system is January 2011. Once the pilot program begins, DLLR plans to add to the template the number/dollar amount of overpayments collected through the pilot program.
- **MOSH Inspections.** After declining to 16 in February, the number of Maryland Occupational Safety and Health (MOSH) inspections increased to 100 in March. DLLR named new review procedures as one cause of the decline, but noted in its follow up response that the compliance officers are adjusting and Assistant Commissioner Roger Campbell has slightly modified the procedures, contributing to the rise in March inspections. The Commissioner added that the case review process was modified and additional training was offered because over 50 percent of MOSH personnel have less than five years experience.

The additional training and case review, while time consuming, is important because the burden of proof is always on MOSH and a sufficiently prepared legal case is therefore necessary.



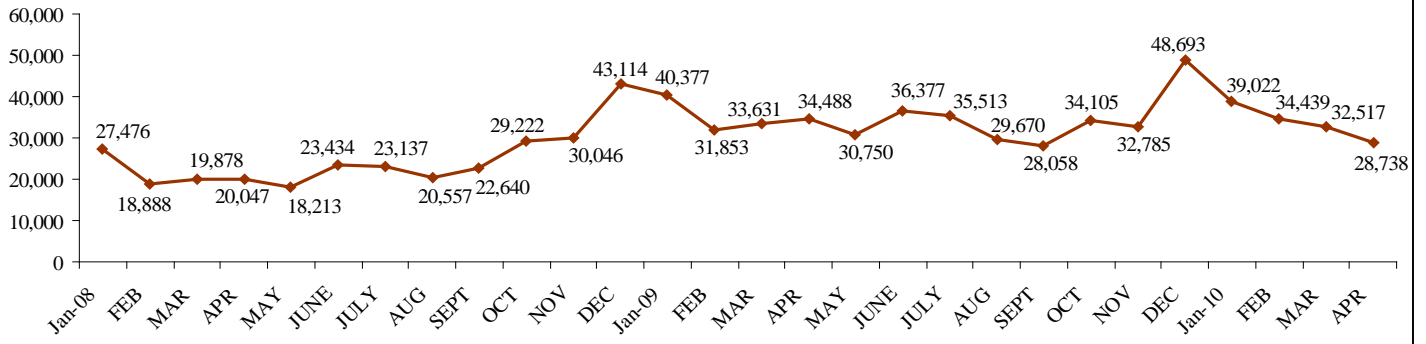
GDU Goals Summary

- DLLR is contributing substantially to the achievement of two of the Administration's top policy goals: GDU I- Create, Save, or Place Residents into 250,000 Jobs in Maryland by 2012 which will be discussed tomorrow (Weds. 5/12) and GDU III- **III. Increase the Number of Marylanders Who Receive Skills Training by 20% by 2012.** *Note: This goal language is new and likely final.*
- Central to the attainment of the skills advancement goal is the development and implementation of a cross-agency Delivery Plan that clearly defines the Administration's goal and outlines the strategies that the State and its partners are undertaking to provide low and middle income Marylanders with *enhanced skills, expanded employment opportunities, and higher wages*. DLLR has been asked to serve as the Administration's lead on this effort and, as such, has been tasked with drafting the Delivery Plan and coordinating its implementation.

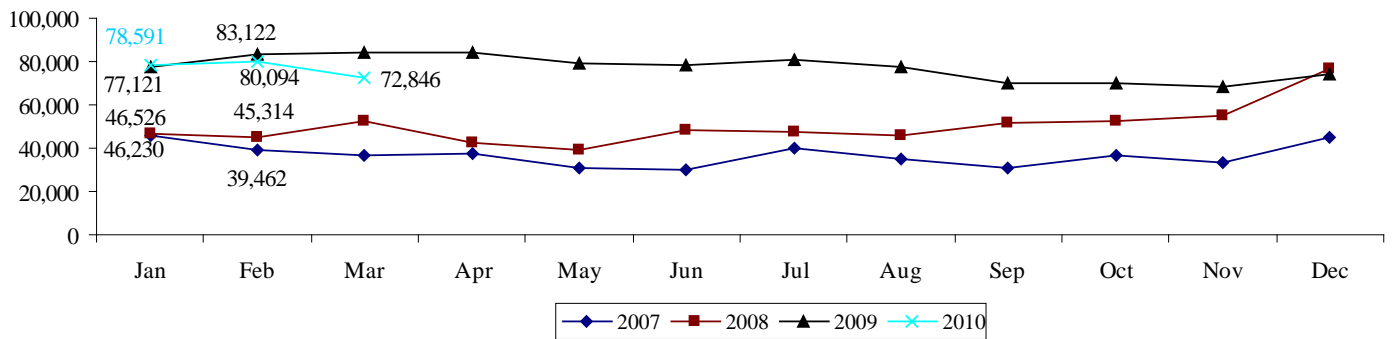
Unemployment Insurance Issues

- New claims for Unemployment Insurance continued to decrease in March 2010 for the fourth consecutive month. The number of persons currently drawing UI benefits decreased from 80,094 in January 2010 to 72,846 in March. Despite the decrease in persons currently drawing benefits, dollars paid in UI benefits increased in February 2010 to \$104.7 million. On May 6th, USDOL certified Maryland's application for the maximum incentive payment under the American Recovery and Reinvestment Act (ARRA). On that date the \$126,750,124 was transferred to Maryland's Unemployment Trust Fund.

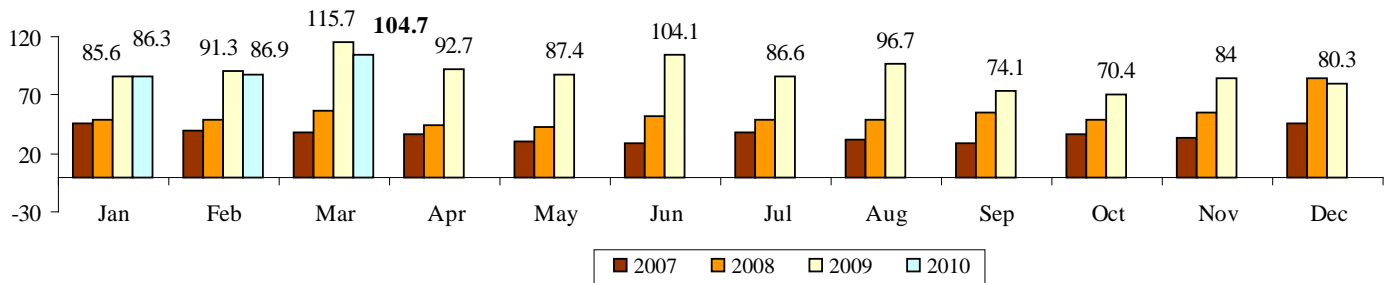
New Claims for Unemployment Insurance

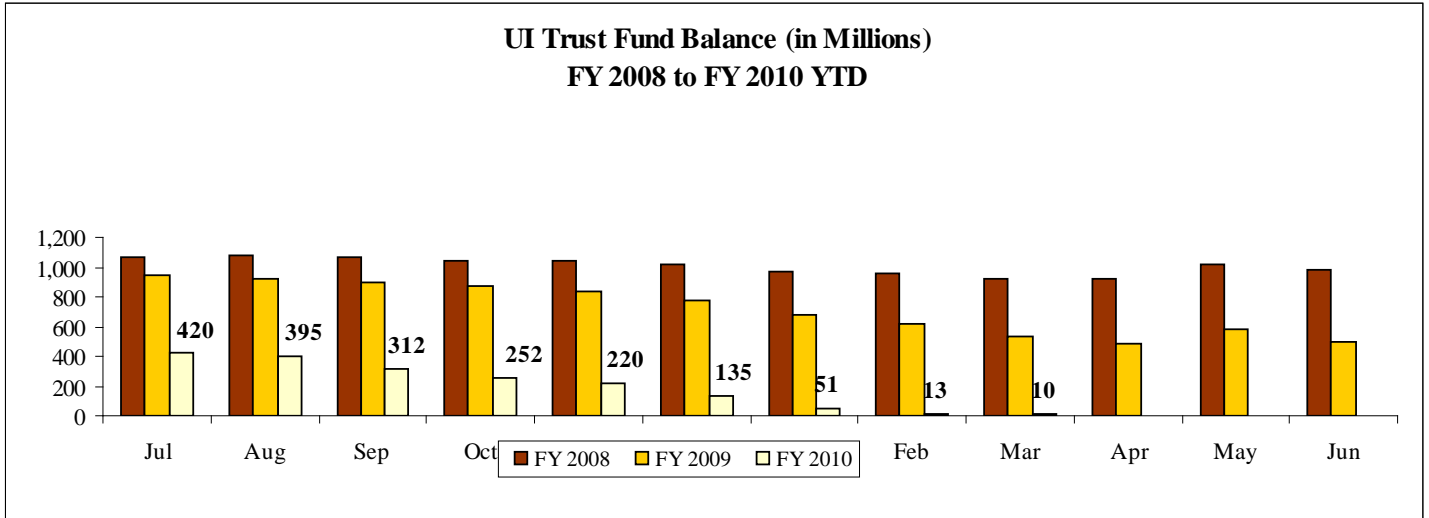


Persons Currently Drawing UI Benefits, Maryland, January 2007 to March 2010

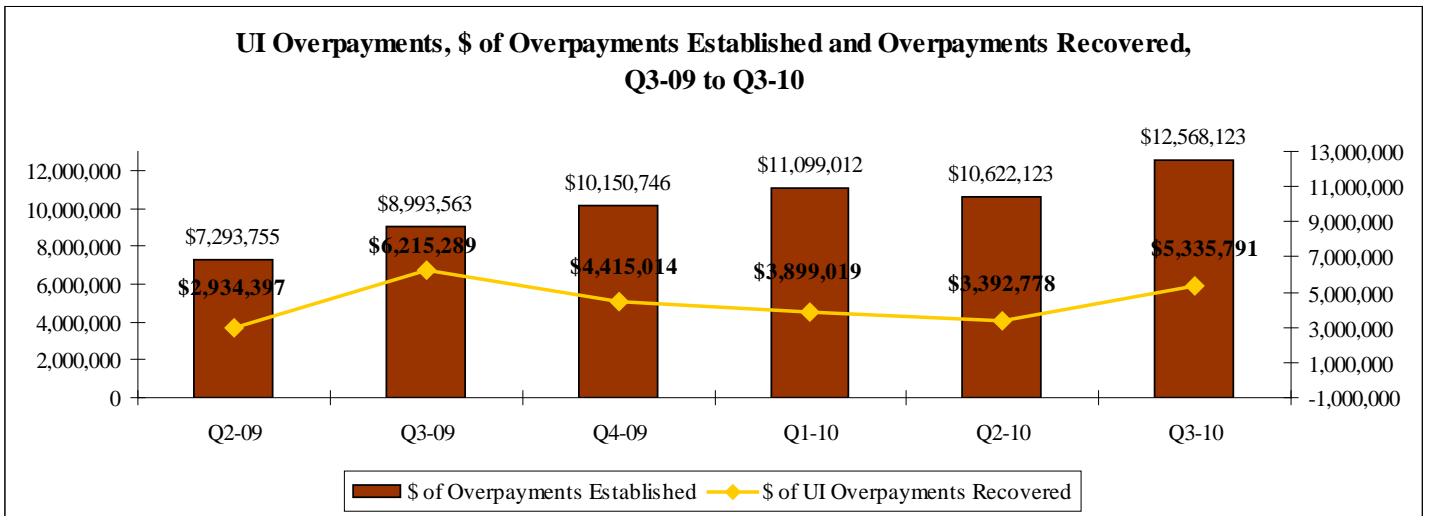


Dollars Paid in UI Benefits (in millions \$) February 2007 to February 2010





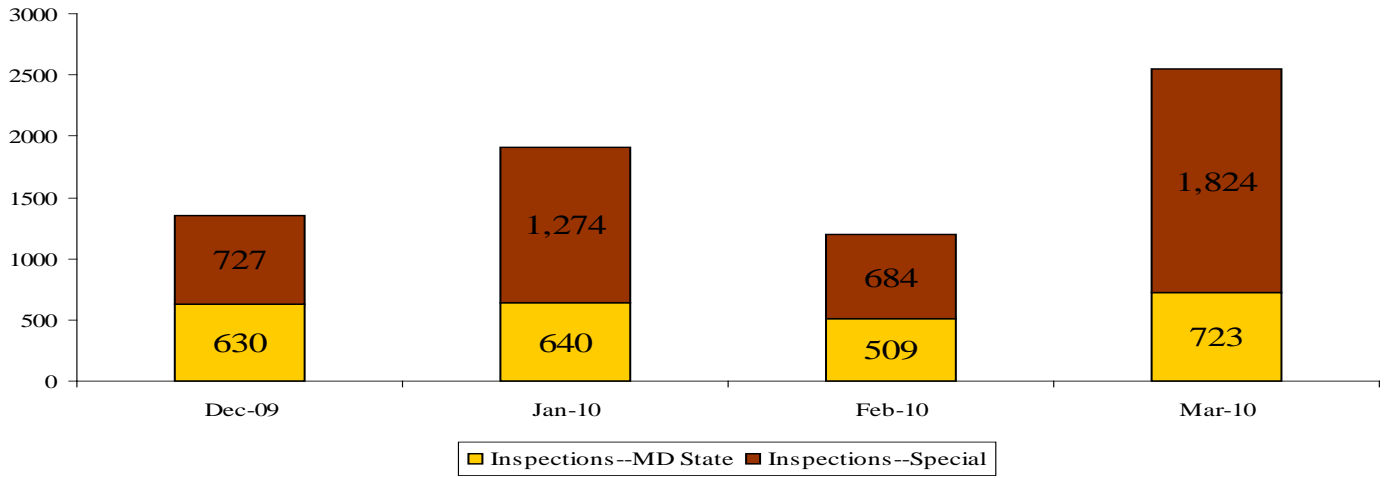
- **UI overpayments.** The dollar amount of overpayments recovered has increased.



Labor and Industry Issues

- **Boiler and Pressure Vessels.** The total number of BPV inspections increased from 1,193 in February 2010 to 2,547 in March 2010.
- **Past Due Inspections.** The total number of overdue inspections decreased from 9,490 to 8,679 in March 2010 due to a decline in overdue inspections in each category.

Total BPV Inspections, State and Special



BPV Past Due Inspections March 2009 to March 2010

