

Meeting Summary

Agency: DJS

Following is a summary of issues discussed at the DJS Stat on July 16, 2010. Analysis is provided by StateStat and the Governor's Delivery Unit (GDU).

Follow-Up

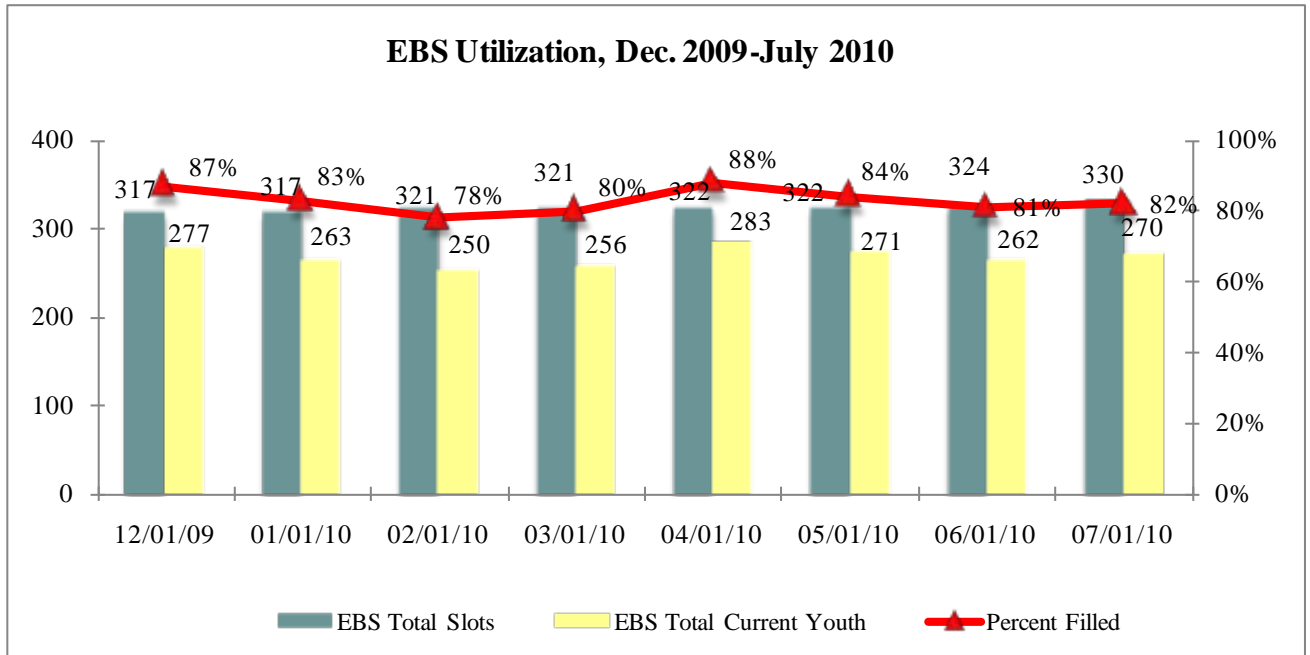
- **Juvenile Arrests.** DJS was asked to provide data showing the number of juveniles, who were arrested as adults, who, at the time of their arrest, had a pending juvenile warrant. DJS reported that during the period of January 1, 2010 through June 30, 2010, there were 186 juveniles arrested as adults in Baltimore City and of those, 11 has pending juvenile warrants at the time of their arrests as adults.
- **Miami Juvenile Assessment Center Visit.** The department provided a report on the recent trip that a delegation of Maryland officials took to the Juvenile Assessment Center in Miami, Florida. DJS identified best practices that could be applied in Maryland, discussed their feasibility, and reported the next steps they were undertaking to initiate these programs.

Quality Assurance

- Periodically, DJS and StateStat review cases at the meetings as a quality assurance measure. DJS reports changes they have made in their protocols based on the reviews. At this meeting, DJS reviewed a particular case and stated that based on internal assessments of this particular case, there will be more intense screenings done for possible VPI candidates. DJS was also asked, for the next Stat, to provide some metrics from Intake screenings as well as a schedule of items taking place during Intake screenings in Prince George's County.

Evidence Based Services

- **Utilization Chart.** DJS was asked to add "average time pending for youth" to their EBS Utilization chart. DJS reported that its goal was to have a child progress from referral to service in 10 days, but in some jurisdictions the time elapsed was close to three weeks. DJS was asked to provide an average time across jurisdictions and more precise information about the range of time frames for the next meeting.
- **Utilization.** The following chart details utilization of Evidence Based Services by DJS through July 1, 2010. As shown, the utilization of EBS slots increased slightly in July (daily snapshot for July 1), to **82%**.



- The set target moving forward will be to maintain utilization of EBS slots at 90%. When asked to breakdown how they were going to achieve 90% utilization, DJS responded:

Strategies to facilitate and sustain 90% EBS utilization involve mechanisms for communication and coordination at the case worker and system levels, data reporting and analysis, training, and monitoring. The strategies are as follows:

EBS Utilization Strategies

Strategies	Actions
Identification of Eligible Youth	<ul style="list-style-type: none"> · Complete the EBS Family Assessment as a required component of staffing for out-of-home placement and step down planning · Include consideration of EBS eligibility as required component of resource staffings and case reviews
Collaboration with Providers	<ul style="list-style-type: none"> · Provider participation in resource staffings and/or case reviews · Maintain close contact with provider throughout referral process to identify youth unavailable for treatment due to detention, enrollment in other services, AWOL · Maintain at minimum weekly contact with providers to track data on referrals, census, wait list, upcoming discharges, and case specific issues
Active Focus on Expediting Referrals, and on Case Progress and Program Outcomes	<ul style="list-style-type: none"> · “Hand off” between case worker and therapist to support family · Monitoring of weekly reporting by provider of time from referral to admission · Reporting and ongoing analysis of outcomes
Training and Technical Assistance	<ul style="list-style-type: none"> · Provider presentations of EBS model to DJS case worker and other regional staff to enhance understanding of eligibility and outcomes · DJS and provider presentations of EBS model and outcomes to judiciary, SAO, public defenders

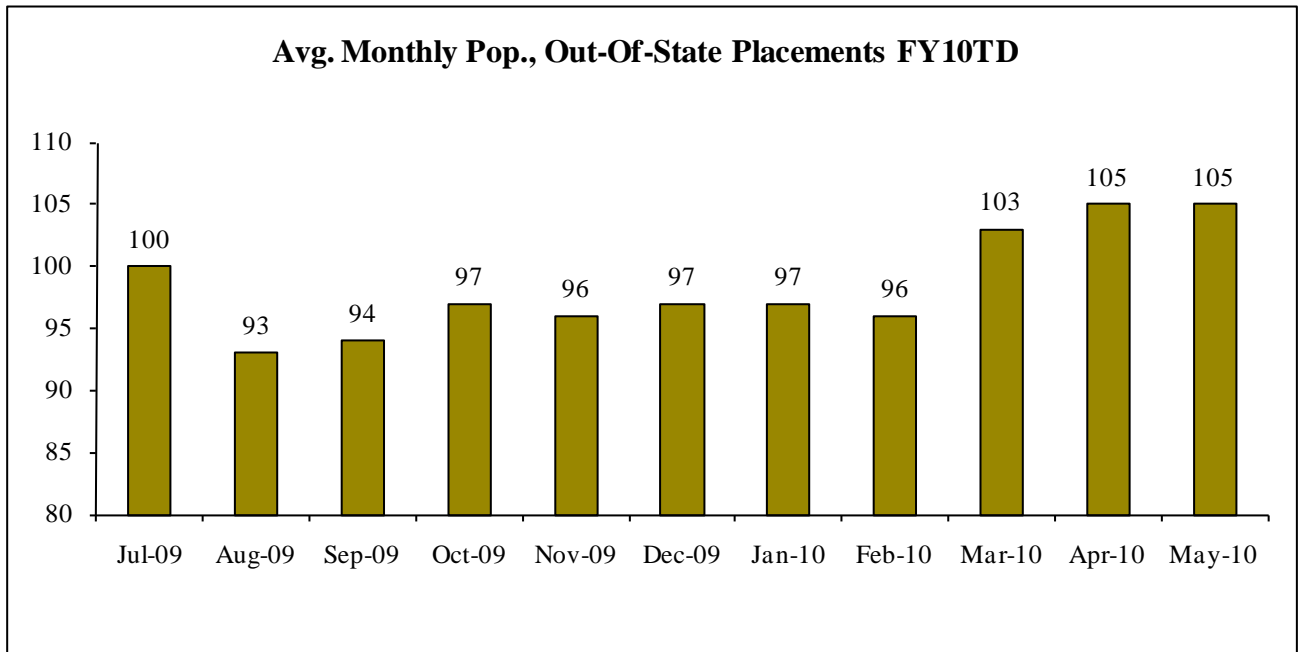
- **Slot Transfer from Baltimore City to Prince George’s County.** DJS provided an update on the 20 MST slots that are being transferred to Prince George’s County. DJS reported that training for these slots started on May 17 for the new therapists and they will start taking youth in early June as planned. Additional slots will become available once it is confirmed that the therapists are meeting criteria. DJS reported that the program is expected to reach full capacity serving 20 youth in August or September and that currently 12 slots were filled.

- **Additional Functional Family Therapy (FFT) Slots in Baltimore City.** An RFP was released in conjunction with Baltimore Mental Health Systems to fund an additional 75 FFT slots in Baltimore City. In their follow-up, DJS submitted the following **revised** timeline for implementing the slots. DJS reported that the launch date has been pushed back from September 1st to September 30th :
 - July 20, 2010- Execute Contract with vendor
 - September 27, 2010- Staff hired & trained
 - September 30, 2010- Begin taking youth.

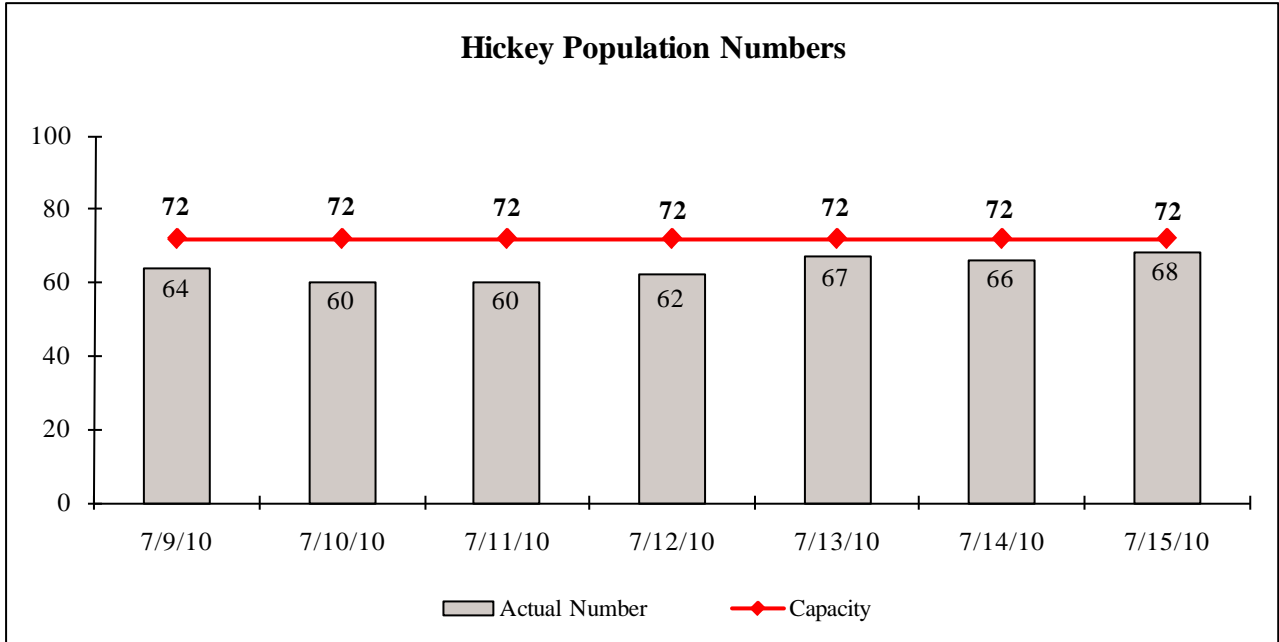
- **EBS Outcomes.** DJS provided an update on the MST outcome report that they are working on in conjunction with Innovations Institute. The MST outcomes study is tentatively scheduled to be completed on September 1, 2010. The Innovations Institute has also been providing DJS monthly process and short term outcome reports for FFT. DJS reported that by the end of the calendar year the FFT data systems will be in position to provide longer term outcome reports.

Placements

- **Out-of-State Placements.** The chart below shows the average monthly population of out-of-state placements. DJS reported that the average population for June has increased to 115 and that they are currently trying to reduce this number. A review of cases has identified children that can be served in the community with Evidence Based Services. However, in some instances the necessary services cannot be provided in Maryland.



- **Charles Hickey School.** As indicated by the chart below, Hickey is below capacity for the first time in several months. DJS was asked to comment on this decrease and explain what best practices were used to achieve this difficult milestone.



- Cheltenham.** The chart below also indicates that Cheltenham’s detention total is also below capacity for the first time in several months. DJS was asked to comment on this decrease as well.

