

Meeting Summary

Agency: DJS

Following is a summary of issues discussed at the DJS Stat on October 8, 2010. Analysis is provided by StateStat and the Governor's Delivery Unit (GDU).

Follow-Up

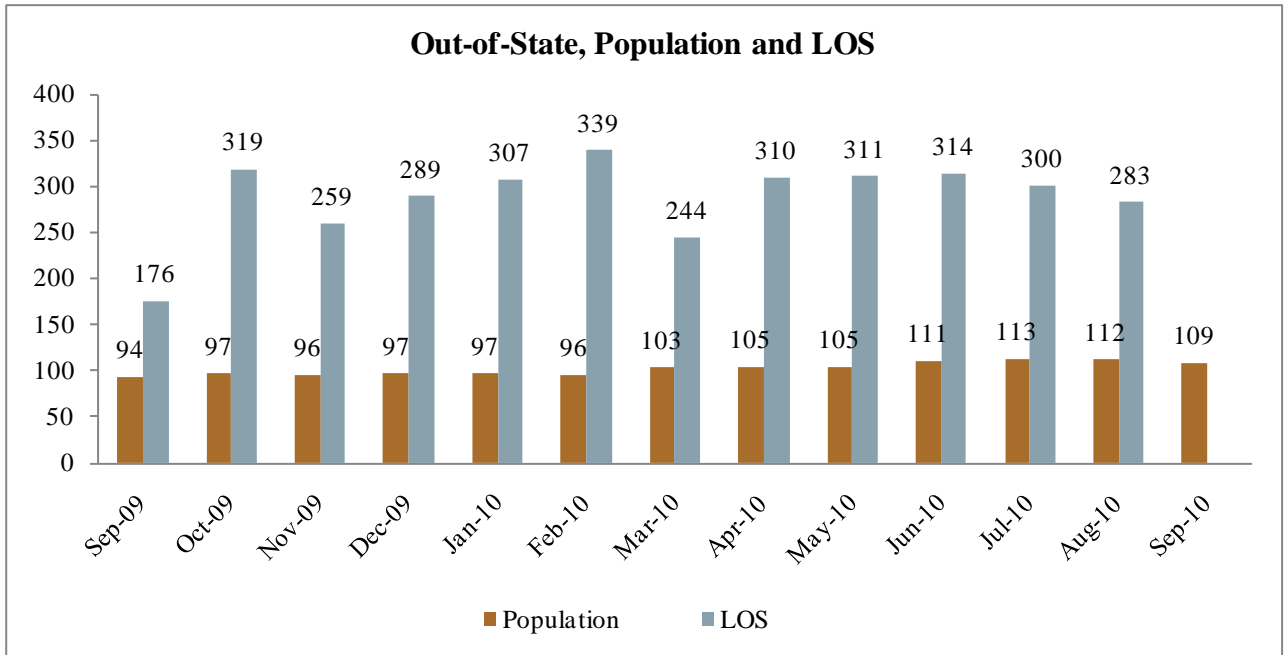
- **Juvenile Paper Charges.** DJS stated that their staff has been gathering reports from precincts themselves and this procedure has resulted in significant procedural improvement for timelier handling by police and receipt of felony charges by DJS.
- **DJS-MVA ID Card Partnership.** (*GDU Item*) In their follow-up, the Department reports that DJS youths are experiencing complications in getting MVA IDs due to the Real Identification Act (codified as 49 U.S.C 30301- implemented through 6 CFR Part 37), which requires all youth to be accompanied by a parent/guardian to co-sign, as well as showing two proofs of residence. DJS spoke with MVA on overcoming these federal barriers. The proof of residence issue will be addressed by MVA drafting a form and a short regulation that will enable DJS to use the form as the sole proof of residency. DJS will try other methods to overcome the signature barrier as well.

Case Review

- Periodically, DJS and StateStat review cases at the meetings as a quality assurance measure. DJS reports changes they have made in their protocols based on the reviews. At this meeting, DJS reviewed a particular case and stated that supervision for this case was outstanding and that this was a situation where everything was done properly; whereas all protocols were followed effectively.

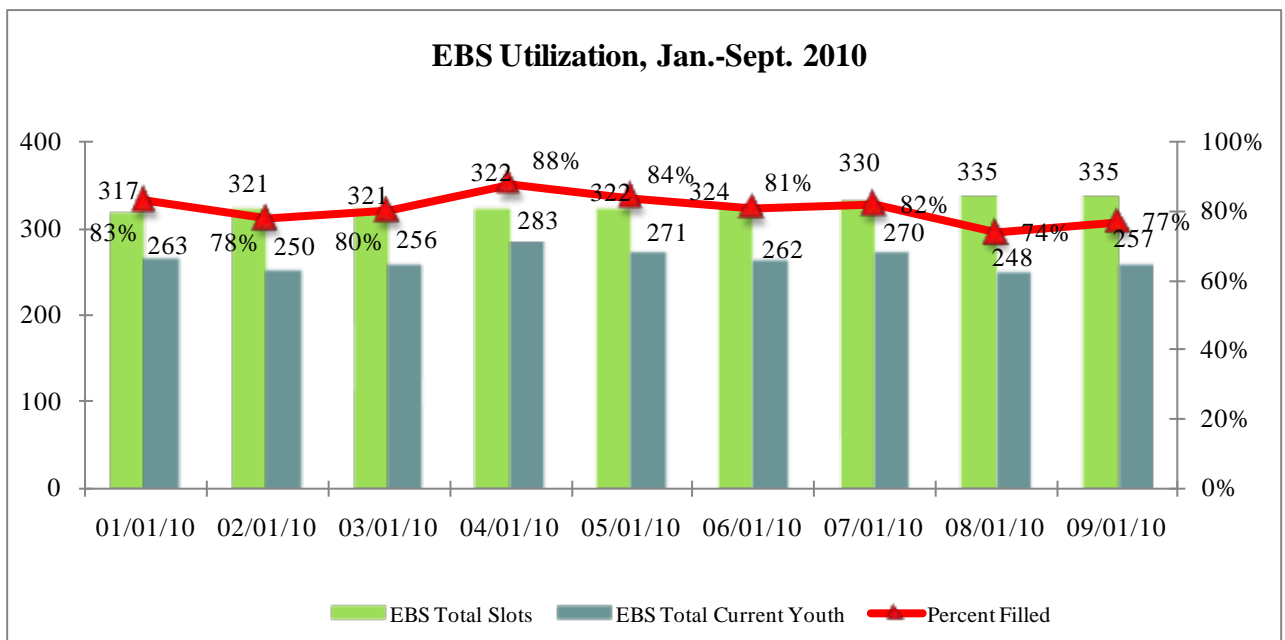
Placements

- **Out-of-State Placements.** As seen below, out-of-state placements declined slightly as opposed to previous months and the length-of-stay fell below 300 days for the first time in the past five months. DJS was asked to explain this data and they stated that length of stay has always been dependent upon the type of treatment that the youth need and are receiving. The decline in length of stay may have been due, though, to additional resources being available in Maryland to address the needs of these high-risk youth. DJS was asked to provide data showing the length of stay by facility to be discussed at the next Stat meeting.



Evidence Based Services

- Utilization.** The following chart details utilization of Evidence Based Services by DJS through September 1, 2010 and an updated chart from DJS is directly below. The utilization of EBS slots increased slightly by the end of September/early October to **83%** (216 filled/ 259 active slots). If you take out the number of youth pending from the number of active slots, DJS is at **90%** utilization (216 filled/ 232 active slots). DJS stated that there will be a meeting with a provider named Innovations in the coming week to discuss the decrease in utilization.



Description	Total	MST	FFT	MTFC-A
Slots	337	125	202	10
Slots Offline				
[staff vacancies or not online yet]	78	20	57	1
Active Slots	259	105	145	9
# of Youth	216	86	128	2
% Filled	83%	82%	88%	22%
# of Vacancies	43	19	17	7
# of Youth Including Youth Pending	232	91	139	2
# of Youth Pending	16	5	11	0
Percent Filled of Active Slots	90%	87%	96%	22%
Expected Increase in the # of Slots due to Expansion – Subject to Change	402	125	267	10

- **GOC Slots.** The Governor’s Office for Children provided the following data on EBS slots. DJS was asked to analyze this data and discuss at the next Stat how the GOC data correlates with DJS’ data.

	Slots Available	Slots Filled	FFT Slots Available	FFT Slots Filled	MST Slots Available	MST Slots Filled
Baltimore City	N/A	N/A	N/A	N/A	N/A	N/A
Baltimore	30	30	30	30	20*	11*
Charles	15	4	15	4	N/A	N/A
Frederick	10	3	N/A	N/A	10	3
Prince George's	19.5	8	12	2	7.5	6
TOTAL	74.5	45	57	36	17.5	9

* Non CCIF funds, funded by compact

Violence Prevention

- **GPS Tracking.** The chart below shows the total amount of youth on GPS as well as VPI youth currently on GPS status. DJS was asked to explain the decline in rates and they stated that there was a reduction of units in their contract. Also, there has been less of a need to use GPS units and an increase in Home Electronic Monitoring (HEM) units has allowed for DJS to monitor youth effectively.

GPS Tracking, Statewide and VPI Totals, First Day Snapshot

