

## Meeting Summary

**Agency:** DJS

Following is a summary of issues discussed at the DJS Stat on November 5, 2010. Analysis is provided by StateStat and the Governor's Delivery Unit (GDU).

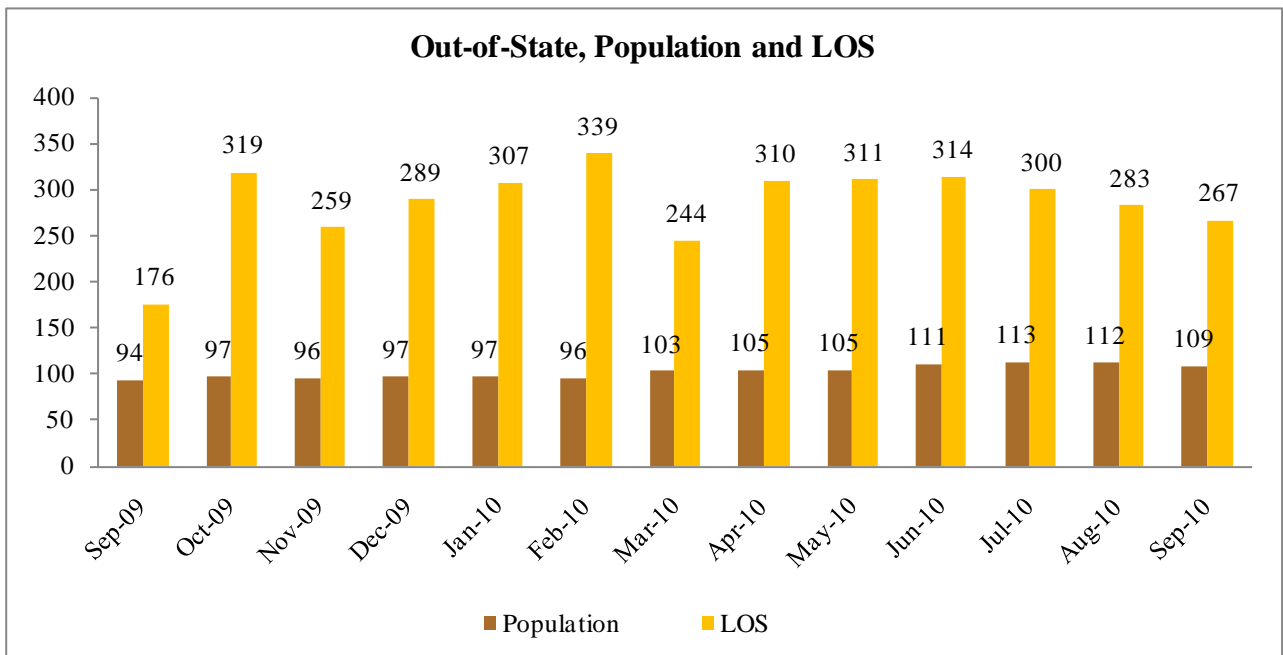
### Follow-Up

- DJS began the meeting by showing slides from a hall redone at one of their facilities. DJS also had photos from a Mosaic Art Exhibit that was unveiled at a wing of the Baltimore City Juvenile Justice Center.
- **FY10 PEP Completion.** DJS provided the following data addressing the Performance Evaluation Program. DJS went on to state that most employee evaluations had been completed and that they would be on target to complete all within the next few months.

FY2010 PEP Completion				
Location	Mid-Cycle	End Cycle	Total	% Complete
Facilities	695/733	679/707	1374/1430	95.42%
Community Services	640/729	654/718	1294/1447	89.43%
Other Services	237/289	254/286	491/575	85.39%
HQ Supervisors	41/53	46/54	87/107	81.31%
Departmental Support & Off. of the Secretary	199/237	202/236	401/474	84.60%
Totals	1812/2042	1035/2001	3647/4043	90.21%

- **Out-of-State Placements.** DJS was asked to provide a breakdown of average length-of-stay by facility. DJS was also asked to give some recent examples of cases that were rejected from going out-of-state and vice versa and provide the details going into the decisions that were made. DJS provided the data below and was asked to comment. Also, DJS stated that they would further breakdown this data and discuss at the next meeting where the largest population is residing out-of-state so that measures can be taken to reduce that rate.

FY 2010 OUT OF STATE PROGRAM ALOS BY PROGRAM TYPE	
Program Type	ALOS
Diagnostic Units / CEU	199
Hardware Secure	283
Impact Programs	209
Staff Secure	269
Residential Treatment Facility	341
Substance Abuse Programs	276
<b>OOS TOTAL</b>	<b>286</b>



## Evidence Based Services

*(GDU Items)*

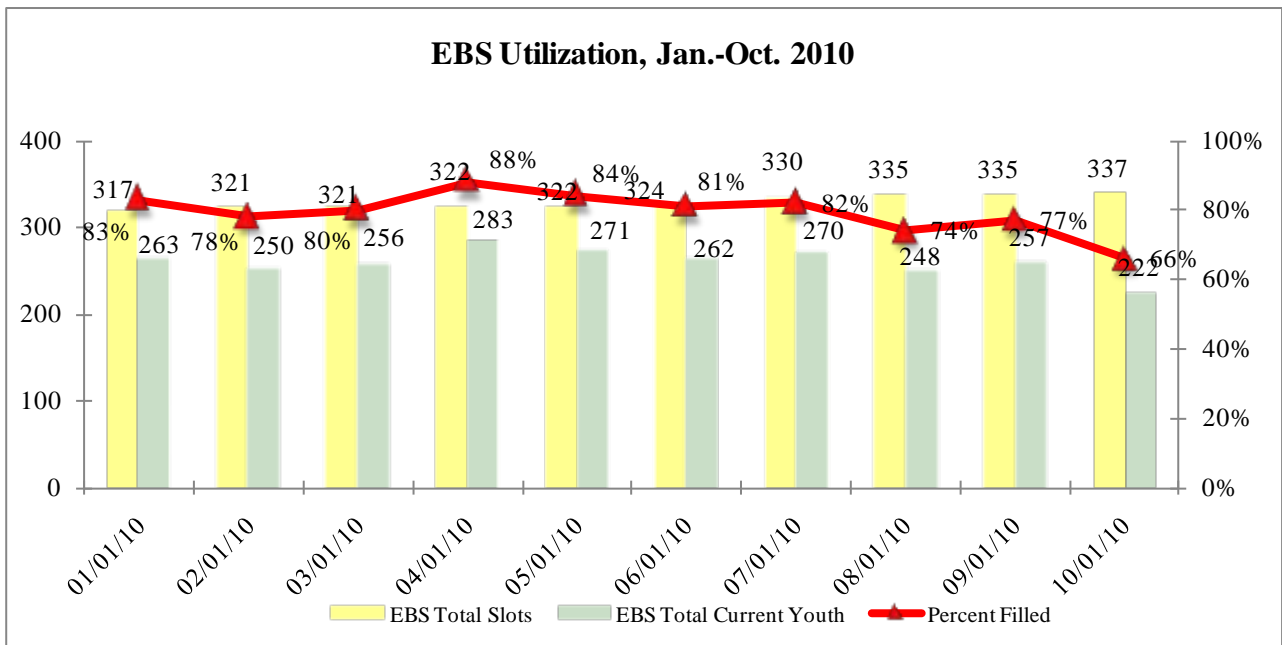
**Utilization.** The following chart details utilization of Evidence Based Services by DJS through October 2010. EBS slots decreased at the beginning of October to **66%** (222 filled/ 337 total slots); as reflected in the template. DJS was asked to discuss this data. Also, DJS was asked to provide outcome/utilization numbers by provider for the next Stat.

**Additional Functional Family Therapy (FFT) Slots in Baltimore City.** An RFP was released in conjunction with Baltimore Mental Health Systems to fund an additional 75 FFT slots in Baltimore City. DJS reports that the launch date was scheduled for September 27<sup>th</sup> (was previously September 1<sup>st</sup>), and the program is expected to begin serving 20 youth daily. The provider is now in the process of hiring the

necessary number of staff to render services to 75 youth daily, which is expected to happen by January 1, 2011. DJS was asked to provide an update.

- EBS Outcomes.** DJS reports that they are working with Innovations Institute on an MST outcomes report. The MST outcomes study was tentatively scheduled to be completed by September 1, 2010; however, as of September 23<sup>rd</sup>, DJS had reported that the outcomes report is still being finalized by the Institute. The Innovations Institute has also been providing DJS monthly process and short term outcome reports for FFT. DJS reports that by the end of the calendar year the FFT data systems will be in position to provide longer term outcome reports and the Innovations outcome study will be sent to DJS electronically.

Description	Total	MST	FFT	MTFC-A
# of Contracted Slots	362	125	227	10
# of Slots Offline (staff vacancies or slots not online)	57	25	32	0
# of Active Slots	305	100	195	10
% of Contracted Slots Available	84.30%	80.00%	85.90%	100.00%
# of Active Cases/Families	235	76	157	2
% Filled of Active Slots	77.00%	76.00%	80.50%	20.00%
# of Vacancies	70	24	38	8
# of Youths Pending Admission	24	8	16	0
# of Active Cases (including Youths Pending Admission)	259	84	173	2
Projected Increase in Utilization (if the youths pending admissions are admitted)	84.90%	84.00%	88.70%	20.00%
Expected Increase in the # of Slots due to Expansion (Subject to Change)	402	125	267	10



- GOC Slots.** The Governor’s Office for Children provided the following data on EBS slots. DJS stated that they believe that about half of the GOC slots for EBS services are DJS youth.

	Slots Available	Slots Filled	FFT Slots Available	FFT Slots Filled	MST Slots Available	MST Slots Filled
Baltimore City	N/A	N/A	N/A	N/A	N/A	N/A
Baltimore	30	30	30	30	20*	11*
Charles	15	4	15	4	N/A	N/A
Frederick	10	3	N/A	N/A	10	3
Prince George's	19.5	8	12	2	7.5	6
<b>TOTAL</b>	<b>74.5</b>	<b>45</b>	<b>57</b>	<b>36</b>	<b>17.5</b>	<b>9</b>

\* Non CCIF funds, funded by compact