



MARTIN O'MALLEY
GOVERNOR

STATE HOUSE
100 STATE CIRCLE
ANNAPOLIS, MARYLAND 21401-1925
(410) 974-3901
(TOLL FREE) 1-800-811-8336

TTY USERS CALL VIA MD RELAY

Meeting Summary

Following is a summary of issues discussed at the DHMH Stat, held on November 9, 2010. Analysis is provided by StateStat and the Governor's Delivery Unit (GDU).

General Observations

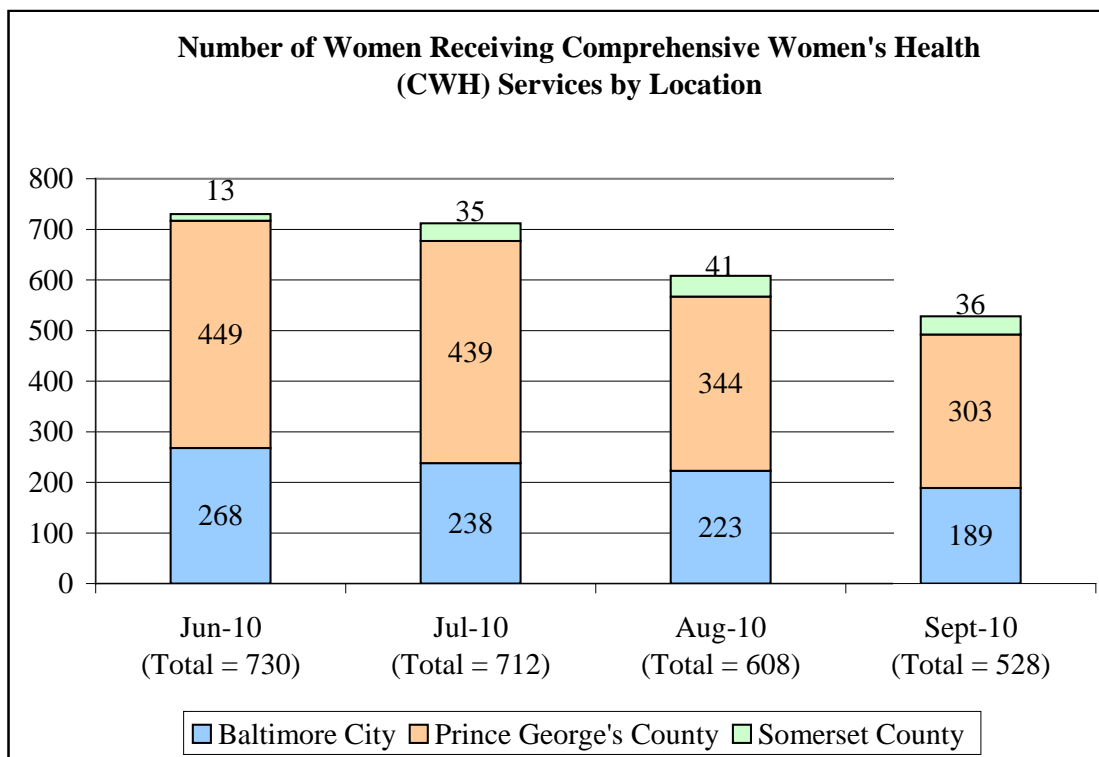
- Mental Health Administration Items
- Governor's Delivery Unit (GDU) Items
- Developmental Disabilities Administration (DDA) Items

Mental Health Administration

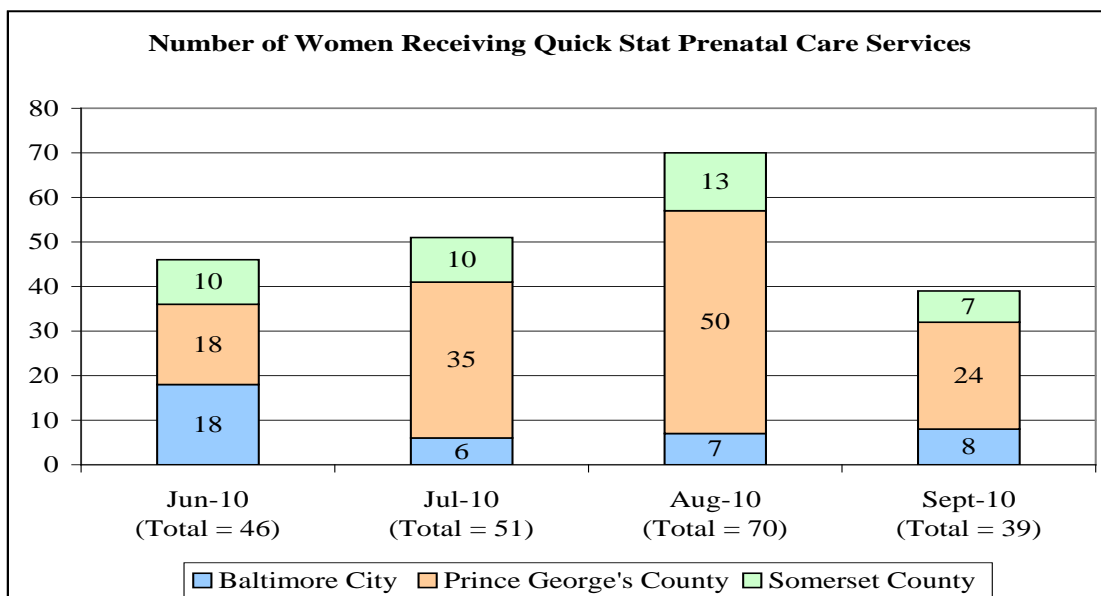
- An investigation by the Baltimore Sun revealed that Baltimore Behavioral Health, Inc. billed \$17 million to taxpayers in fiscal 2009, an increase from \$5.5 million six years prior. Addicts who enroll in BBH are three times more likely to be deemed mentally ill than are addicts treated at other centers across Maryland, according to state data. In order to bill Medicaid and Maryland's Public Mental Health System (PMHS), patients must be diagnosed with a mental illness. The article suggests that BBH may be diagnosing patients with a mental illness in order to receive public funding.
 - The Department reported that a full scale audit spurred by an anonymous complaint to the Office of the Attorney General was completed in December 2008.

GDU Items

- **Comprehensive Women's Health Services.** FHA staff met with Dr. Shell, Prince George's Co. Health Officer on October 26th to discuss the reduction in the number of women served by Comprehensive Women's Health centers in that county. According to Dr. Shell, the demand for services typically goes down in summer months. The program manager vacancies have not directly affected clinic staffing or the availability of services. Dr. Shell acknowledges that the vacancies have probably resulted in under-reporting of women receiving comprehensive women's health services since this requires special reporting with program management oversight/vigilance. Dr. Shell has been able to overcome local government barriers to recruitment of key staff, and two management position recruitments are currently with November 4th closing dates.



- **Follow-up on “Quick Start” Prenatal Care Services.** Quick Start programming targets women for earlier entry into prenatal care. At the most recent Stat meeting, DHMH was asked why Baltimore City’s numbers are lower than other jurisdiction’s. According to Baltimore Health Care Access (BHCA), unlike the other 2 targeted areas, Baltimore City has a very robust network of service providers that accept Medicaid -- eight Federally Qualified Community Health Centers with 20 clinic sites and eight birthing hospitals, many of which have outpatient OB clinics. These additional sites, however, are not captured in the data.
 - DHMH states that the Department will rely on additional data obtained over the course of the year to help determine more precise expected monthly capacity and goals for Quick Start.
 - The Department also reported that their message is that the Baltimore model of a network of referrals should be replicated.



- Medicaid Applications.** Health Officers for Baltimore Co. and Prince George's Co. and from Baltimore Health Care Access in Baltimore City responded quickly by phone, e-mail, or letter to the September memo. Final September data indicated that the number of applications processed in more than 10 days decreased 128 in September, down from 163 in August. This decrease was driven largely by a decrease to 13% of applications processed in more than 10 days in Baltimore City Departments of Social Services in September from 20% in August.

Pregnant Women Processed Medicaid Applications -- Target GDU Jurisdictions			
August 2010			
	# of Applications Processed within 10 days (includes women who were ACE'd)*	# of Applications Processed in more than 10 days	Total Applications
<u>Baltimore City</u>			
LDSS	92	23	115
LHD	69	2	71
<u>Prince Georges County</u>			
LDSS	81	16	97
LHD	125	2	127
<u>Somerset County</u>			
LDSS	2	1	3
LHD	3	0	3
<u>Baltimore County</u>			
LDSS	57	12	69
LHD	71	20	91
ALL LDSS**	395	110	505
All LHD**	710	53	763
Total State**	1105	163	1268

** Target jurisdictions were matched against ACE files manually and are unduplicated.*

*** Total State (> 10 days) may include women with ACE 90 day temporary coverage; programming is not yet in place to de-duplicate all counties.*

Developmental Disabilities Administration (DDA) Items

- **Waiting List and Individuals Served.** As predicted by DHMH at the last StateStat meeting, the number of individuals in the crisis resolution category continued to decline in September, as shown in the first chart below. The total number of individuals in DDA increased after declining at the beginning of the fiscal year as shown in the second chart.

