

Meeting Summary

Agency: DHR

Following is a summary of issues discussed at the DHR Stat on November 19, 2010. Analysis is provided by StateStat and the Governor's Delivery Unit (GDU).

Follow-Up

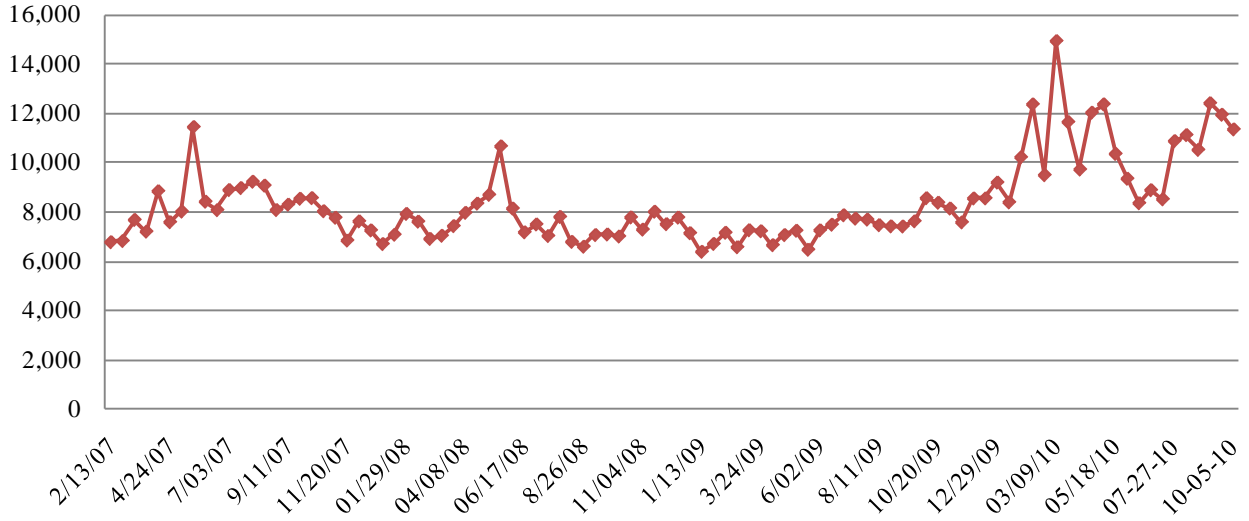
- **Long-Term Care.** DHR was asked to explain how Maryland compares to other states in terms of delays of service.

DHR reports that Adrienne Warren, Director of FIA's Bureau of Long Term Care Eligibility, conducted research on other states' practices, and found that Louisiana, New York, North and South Carolina have 45 day timeframes for determining eligibility but are still having delays due to the increased look back period in the Deficit Reduction Act. The Centers for Medicare and Medicaid Services (CMS) website does not have statistics on average processing time for LTC applications. DHR continues to have difficulty processing LTC applications timely due to the increased look back period. In a 2007 study of Medicaid and Asset Transfers in three large jurisdictions in three states, Maryland, Pennsylvania and South Carolina, GAO acknowledged that "all applicants who transfer assets for less than FMV [fair market value] during the look back period on or after February 8, 2006 (the date the DRA was enacted) will experience a delay in eligibility for Medicaid coverage for long-term care...." The percentage of applicants transferring assets during the look back period for less than the FMV (10.4%) was highest in Maryland. In Pennsylvania 5.4% transferred assets and 10.1% transferred assets in South Carolina. These percentages have increased as the look back period increases. DHR is working with HFAM and Lifespan, which are conducting additional research on best practices in other states. DHR also is planning joint site visits, which are proposed for December of this year.

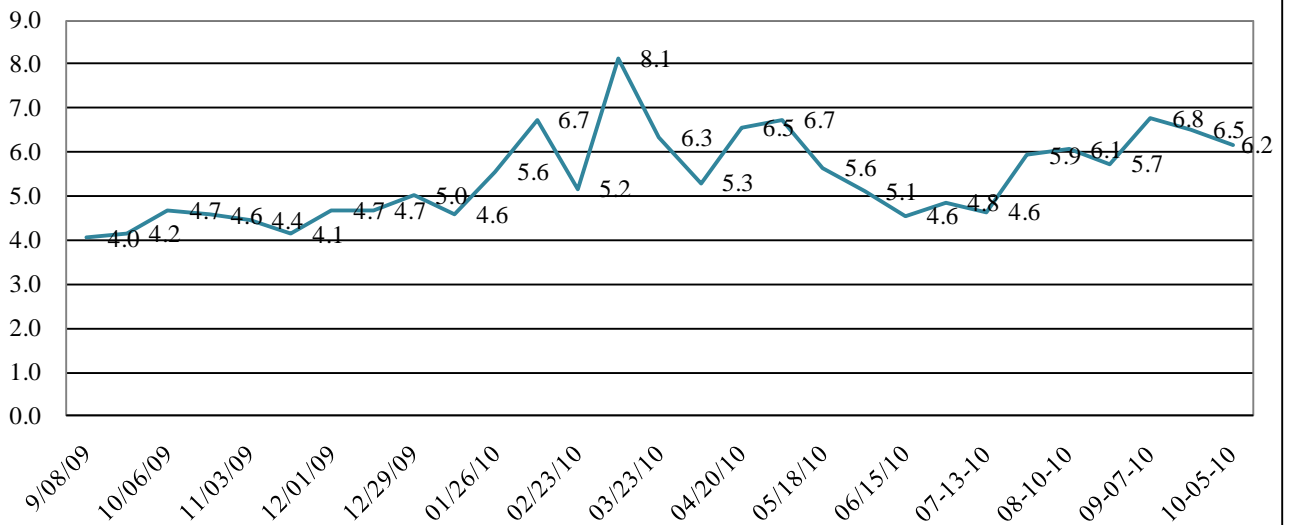
Personnel

- **Overtime Usage.** The charts below highlight overall OT usage by LDSS employees from 2007-2010 and an estimate of OT hours per LDSS worker by pay period. As indicated in the first chart, there were dips in rates from May through July of this year. DHR stated that they have been able to handle caseloads at a steady rate even while overtime was dipping.

LDSS OT Usage, FY07-FY11



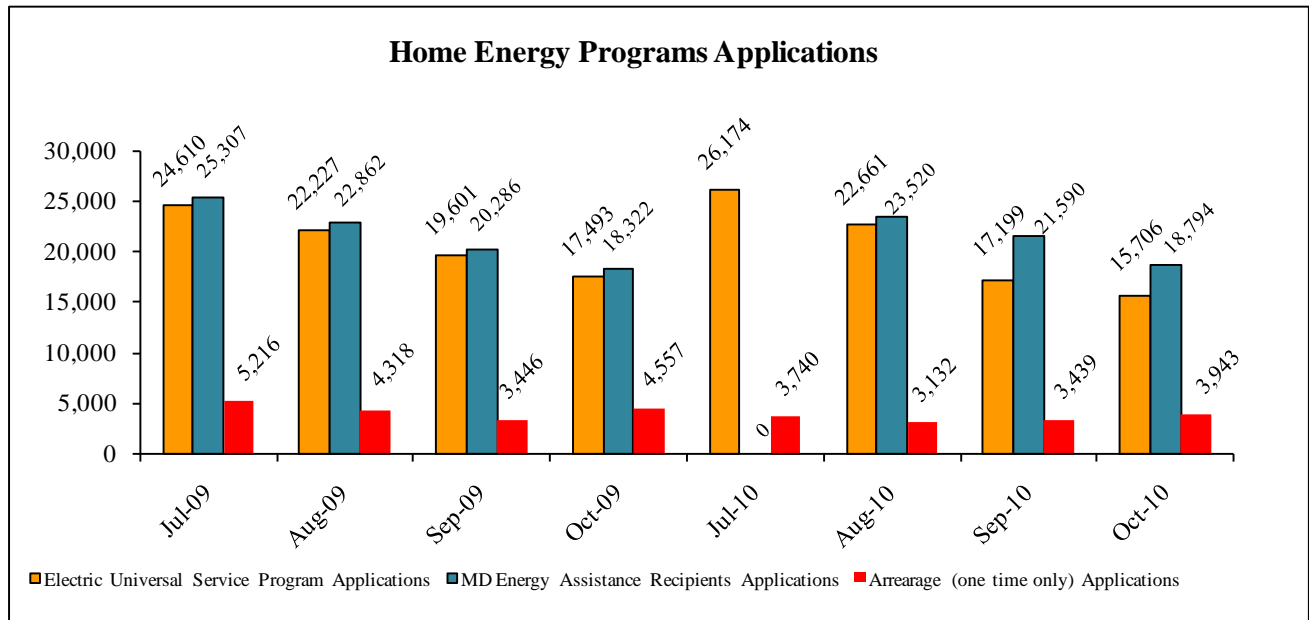
OT Hours Per Worker Per Pay Period



Family Investment Administration

- **Energy Assistance.** DHR was asked to explain the data shown below. DHR explained that Baltimore city has a very high volume of applications coming in on a weekly basis. DHR also stated that although the volume is high statewide, they have been able to steadily enter the applications into their system.

Energy Assistance Applications (To Be Entered) through Nov. 2010								
Jurisdiction	7/31/10	8/24/10	9/9/10	9/24/10	10/8/10	10/22/10	11/5/10	11/19/10
Baltimore City	1,656	3,304	3,078	3,902	3,677	3,304	3,600	3,435
Somerset (Includes Worcester, Wicomico)	60	151	163	249	215	336	366	391
Frederick	132	163	159	251	226	315	326	285
Harford	989	568	415	501	223	149	162	213
Baltimore	200	305	100	203	106	103	153	199
Montgomery	900	2,306	2,447	0	264	273	145	91
Anne Arundel	10	69	129	149	111	104	107	52
Dorchester	500	50	75	75	103	110	105	50
Queen Anne's	20	41	50	52	35	45	53	50
Allegany	0	6	80	0	0	51	38	37
Caroline	46	84	87	93	0	72	37	35
Washington	0	57	171	195	93	35	35	25
Carroll	50	30	25	31	70	25	30	19
Kent	122	77	88	76	52	34	25	5
Prince George's	901	721	166	115	101	180	19	0
Talbot	25	26	23	8	12	24	15	0
Calvert (includes Charles, St Mary's)	605	451	210	89	20	17	11	0
Cecil Co.	0	16	145	85	21	65	0	0
Garrett	67	28	20	41	0	40	0	0
Howard	59	197	16	23	0	0	0	0
TOTAL	6,342	8,650	7,647	5,900	5,288	5,160	5,216	4,887
Sorted by most recent period								
Generally, numbers less than 50 represent what has been received within the last day.								
Notes 11/12/10								
Somerset is high due to college students applying. Only 1 staff person is located in Somerset, but applications are being sent to main office in Salisbury for data entry.								

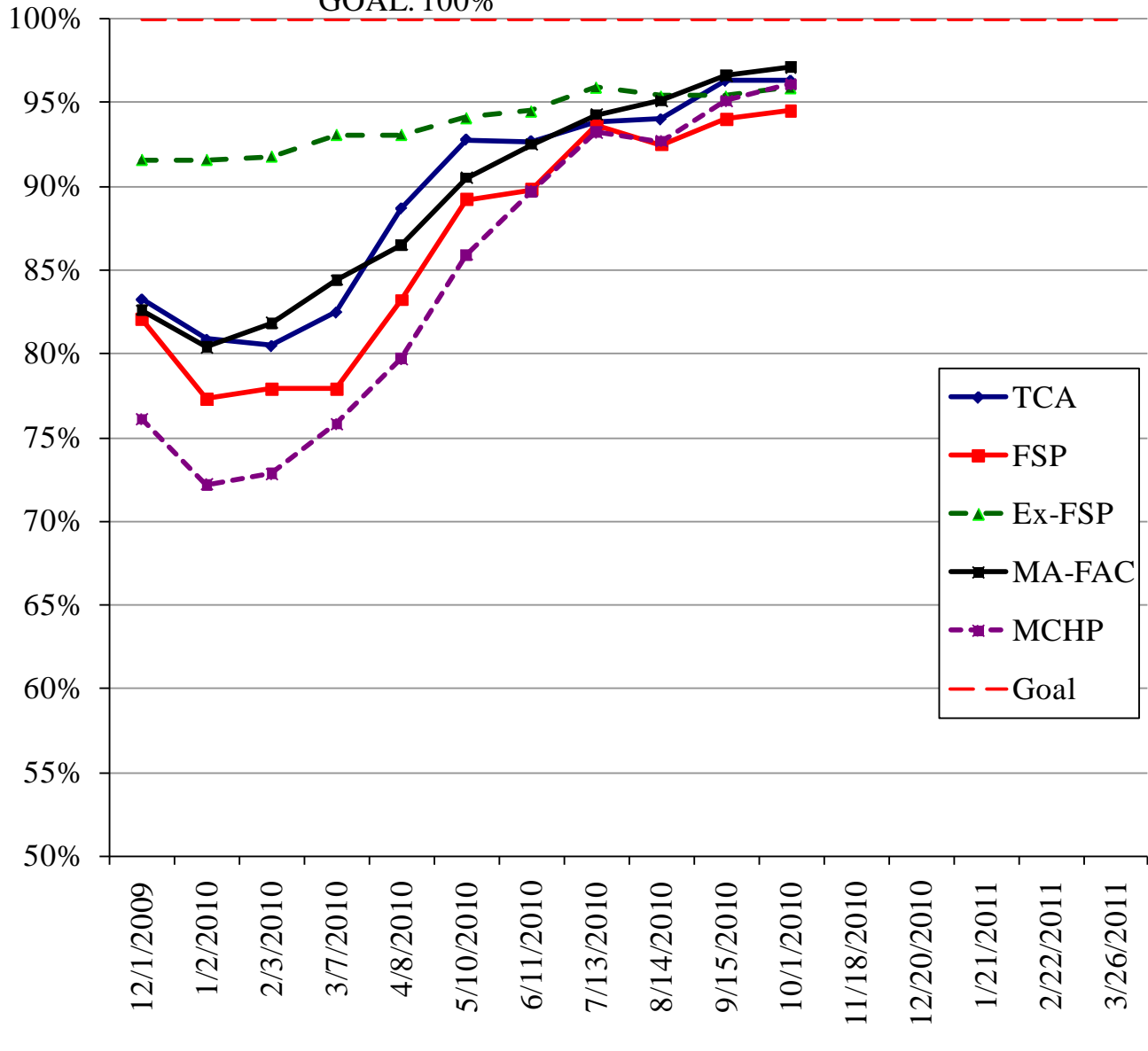


- Overall Statewide Compliance.** The data below shows the overall statewide compliance rates for Temporary Cash Assistance (TCA), The Food Supplement Programs (FSP, also known as Food Stamps) for Regular and Expedited compliance, Medical Assistance-Family and Children (MA-FAC), and the Maryland Children’s Health Program (MCHP). DHR reports that, statewide, the upward trend in monthly compliance rates for all of the above mentioned programs continued through October 2010. As of this StateStat meeting, although it is not reflected in DHR’s template, DHR reports that they are over 96% in all of the compliance areas.

Approved or Denied Trends							
Compliance Rate (Approved or Denied)	TCA	FSP	Ex-FSP	MA-FAC	MCHP	All Benefits	Goal
December-09	83.3%	82.1%	91.6%	82.6%	76.1%	83.4%	100%
January-10	80.9%	77.3%	91.6%	80.4%	72.2%	80.5%	100%
February-10	80.5%	77.9%	91.8%	81.8%	72.8%	80.9%	100%
March-10	82.5%	77.9%	93.1%	84.4%	75.8%	82.5%	100%
April-10	88.7%	83.2%	93.1%	86.5%	79.7%	86.0%	100%
May-10	92.8%	89.2%	94.1%	90.5%	85.9%	90.6%	100%
June-10	92.7%	89.8%	94.5%	92.5%	89.7%	91.7%	100%
July-10	93.8%	93.6%	95.9%	94.3%	93.2%	94.2%	100%
August-10	94.0%	92.5%	95.4%	95.1%	92.7%	94.0%	100%
September-10	96.3%	94.0%	95.4%	96.6%	95.1%	95.3%	100%
October-10	96.3%	94.5%	95.9%	97.1%	96.1%	95.9%	100%

Compliance Rate for Approved or Denied TCA, FSP, Ex-FSP, MA-FAC, MCHP

GOAL: 100%



- **FSP Opt-out Legislation** (GDU Item). DHR has been working with the Governor’s DC Office to submit an amendment to the Child Nutrition Reauthorization Bill (introduced to Congress on June 10th) that would include an opt-out provision for SNAP. This would help remove the confidentiality obstacle to sharing data with DHR on the reverse match of FARMS caseloads with FSP, specifically focusing on increasing enrollment in FSP for households in which a child is receiving free or reduced meals.

DHR is hopeful that the legislation will be introduced in the future; however, the State is being encouraged to continue to focus attentions on the statewide opt-in provision, in case the national efforts are unsuccessful.

- **FSP Opt-in Provision** (GDU Item). DHR has been working with MSDE to include an “opt-in” section for FSP in the FARMS application. All jurisdictions have sent out the application with the opt-in language; however it was reported that no school system had the capacity to collect the opt-in information. To date, only 5 LEA’s have been able to effectively gather their opt-in data.

DHR reports that on November 9th, a conference call took place with the nutrition directors from the five LEAs that have already collected their opt-in data. When a secure file sharing mechanism is set up by OTHS, DHR will contact the LEAs about sharing the opt-in data in a secure manner. If MOUs are required, they must be executed before proceeding.

As for the remaining LEAs, Frederick, Kent, and Montgomery want to work with their local departments of social services to arrange for WEX interns to gather the data. If this attempt is successful, DHR will discuss using WEX interns for the other 16 jurisdictions.