

DPSCS Meeting Summary

Following is a summary of issues discussed at the DPSCS—DPP/DPDS Stat on February 10, 2011. Analysis is provided by StateStat and the Governor’s Delivery Unit (GDU).

Identifying High Risk Offenders and Holding Them Accountable

(GDU Goal 4- Reduce Violent Crime in Maryland by 20% by the End of 2012)

- **Ensure all mandatory contacts are made for adults on VPI.** In 2010, the Department set a target to ensure that at least 2.5 contacts were made every week for each adult on VPI. In December 2010, VP1 adults averaged 3.1 contacts, while VP2 adults averaged 1.7 contacts.

The Department agreed to set separate contact goals for VP1 and VP2 supervisees.

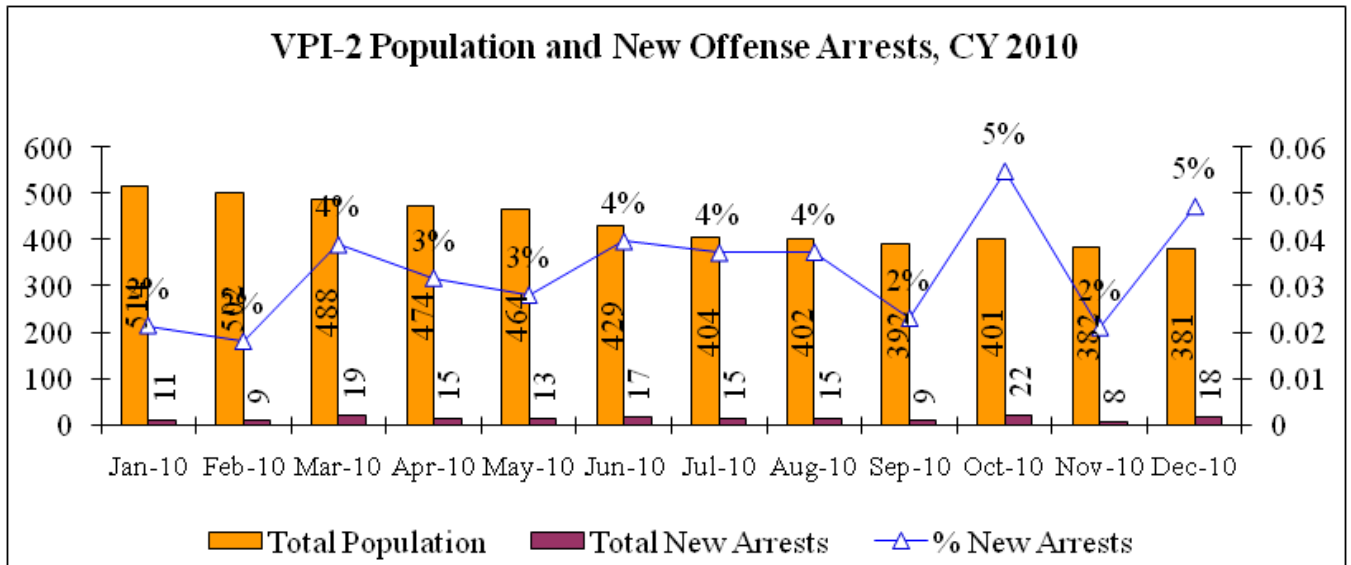
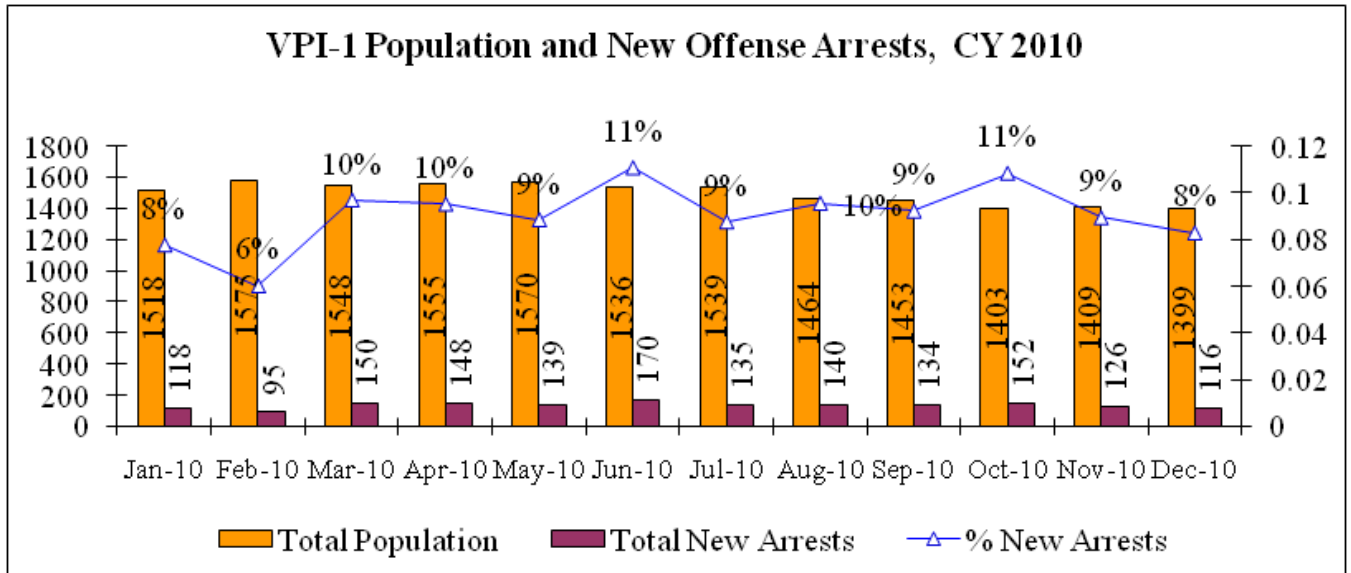
Actions	Agency Responsible	Implementation Targets	Delivery Date	Progress to Date
A) Identify high risk offenders and hold them accountable.				
Ensure all mandatory contacts are made for adults on VPI	DPSCS	2.5 contacts/wk Adults	2010	December 2010- 3.1 contacts/ wk (VP1); 1.7 contacts/ wk (VP2)

- **Maintain VPI re-arrest rates for new offenses below 10% (VP2- under 5%).** For 2011, the Department set a target to maintain re-arrest rates for new offenses below 10% for VP1 and below 5% for VP2. In December 2010, the Department was averaging 8.3% for VP1 and 3.1% for VP2.

The panel and the Department discussed this strategy, noting that the VPI model is used to identify offenders who are at a high risk of recidivism (and therefore more likely to be re-arrested). StateStat, the GDU, and the Department agreed to look into additional measures that may provide additional context to the VPI program.

Actions	Agency Responsible	Implementation Targets	Delivery Date	Progress to Date
A) Identify high risk offenders and hold them accountable.				
Maintain re-arrest rates for new offenses for VP1 below 10% and below 5% for VP2	DPSCS/DJS	Rates below 10% and 5%	2011	December 2010- 8.3% (VP1); 4.7% (VP2)





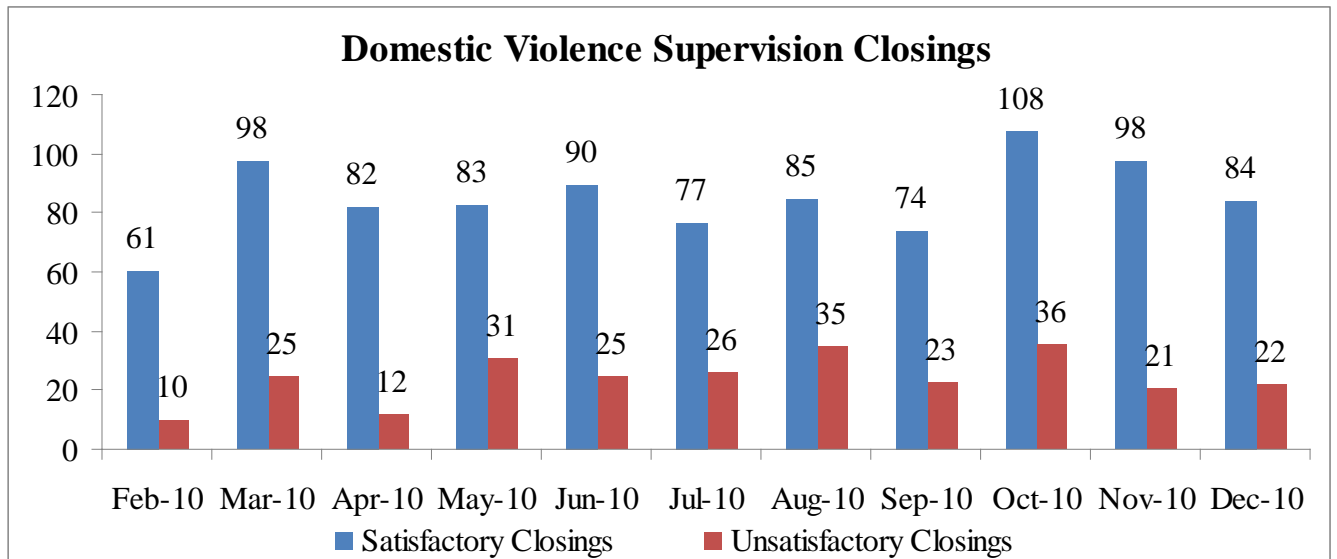
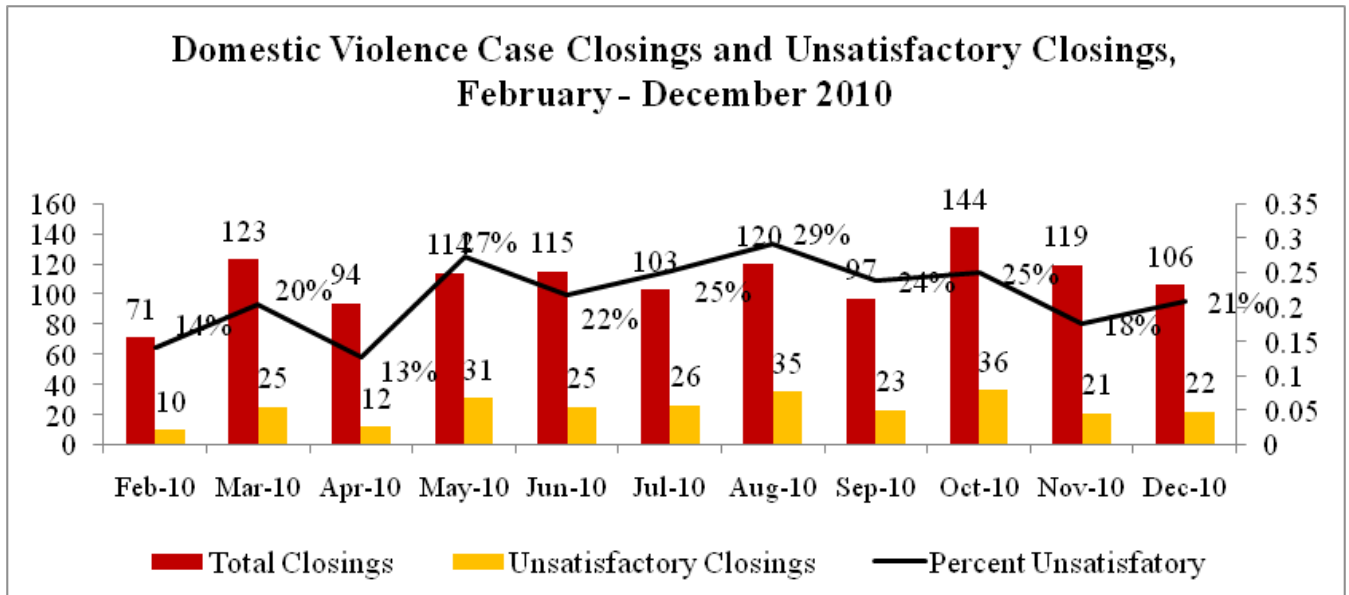
Domestic Violence Supervision

(GDU Goal 5- Reduce Violent Crime Against Women and Children by 25% by the End of 2012)

- Increase in Satisfactory and Unsatisfactory Domestic Violence Closings.** The Department reports the number of domestic violence cases that are closed successfully and unsuccessfully. December data shows a 14 percent decrease in satisfactory closings and a 4.7 percent increase in unsatisfactory closings from October.

The Department noted that it is still bringing the domestic violence supervision program online and continues to build its caseload. As a result, no baselines have been set for case closings. The Department and the panel discussed how to better measure the domestic violence programs, including the possibility of measuring new protective orders against domestic violence supervisees, tracking the number of domestic violence crimes, and measuring the participation of DPP domestic

violence supervisees against overall domestic violence crimes. StateStat is continuing to research potential new measures, and is planning to meet with the Department to discuss further metrics.

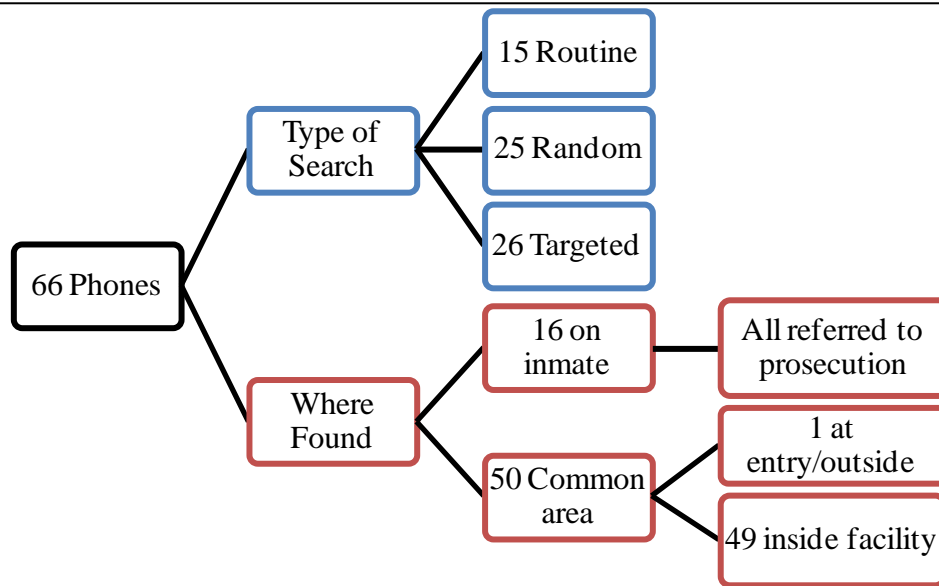
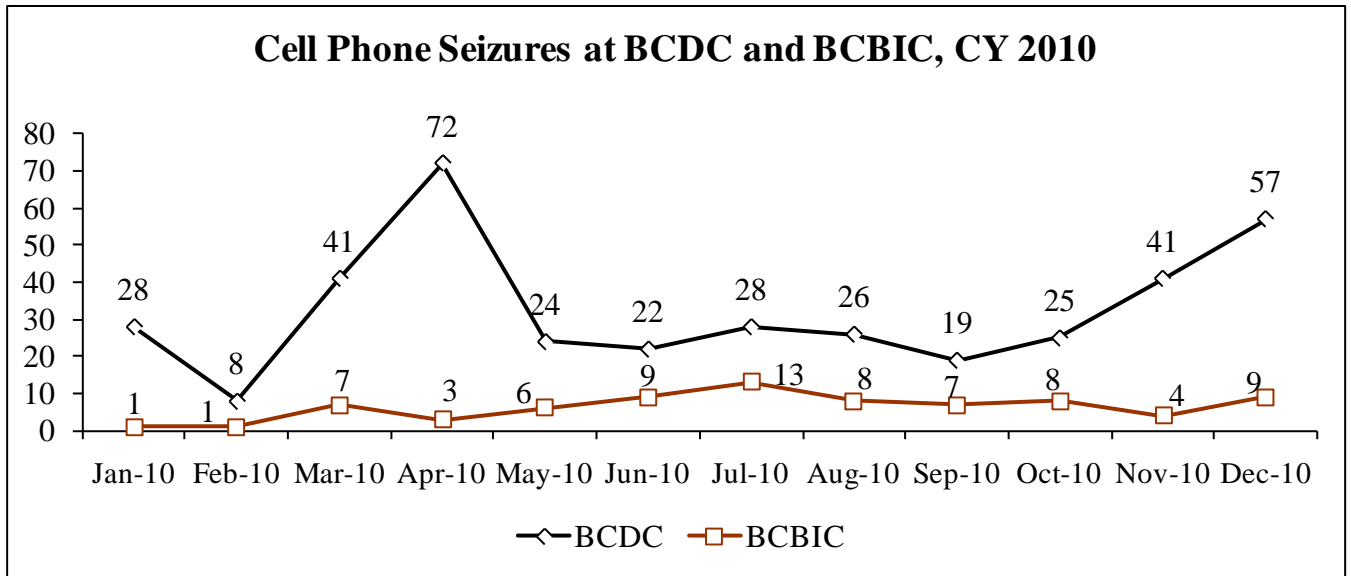


Contraband

- Cell Phone Seizures.** As expected, DPDS saw an overall increase in cell phone seizures due to the lockdown at BCDC in December. Overall, 66 phones were found at DPDS facilities during December; a breakdown of the search type and location of seizure is shown below.

The Department was asked why some cell phones were not referred to prosecution; they responded that these cases may still be under investigation, or the circumstances may prevent the Department

from pursuing further prosecution. The Department also discussed how it uses intelligence and investigations to improve contraband interdiction.



All phones found on inmates are referred to prosecution. Information found from many phones in the common areas was used to further criminal investigations.

To ensure better information sharing and reporting, IIU is now integrating operations with the Department’s contraband database, FIRM, to track contraband seizures and investigations jointly.

Ultimately, all cell phones that were found on inmates were referred to prosecution.

- **C-Block.** DPDS also noted that it working with inmates to open C-block, which will be a special unit of inmates who have good records in the facility and sign a contract of understanding with staff regarding their placement in C-block. C-block opened on January 28, 2011.