

## Meeting Summary

Following is a summary of issues discussed at the DHR Stat on February 25, 2011. Analysis is provided by StateStat and the Governor's Delivery Unit (GDU).

### Follow-Up

- **Grants.** DHR has provided a list of the grants they are currently pursuing. Also, DHR was asked to illustrate which grants would be going to local programs?
- **DHR's IT Strategy.** DHR had a presentation ready highlighting their IT strategy to modernize. This strategy calls for improvements in the areas of Health Care, Applications, and Infrastructure. A powerpoint was shown.

### Audit

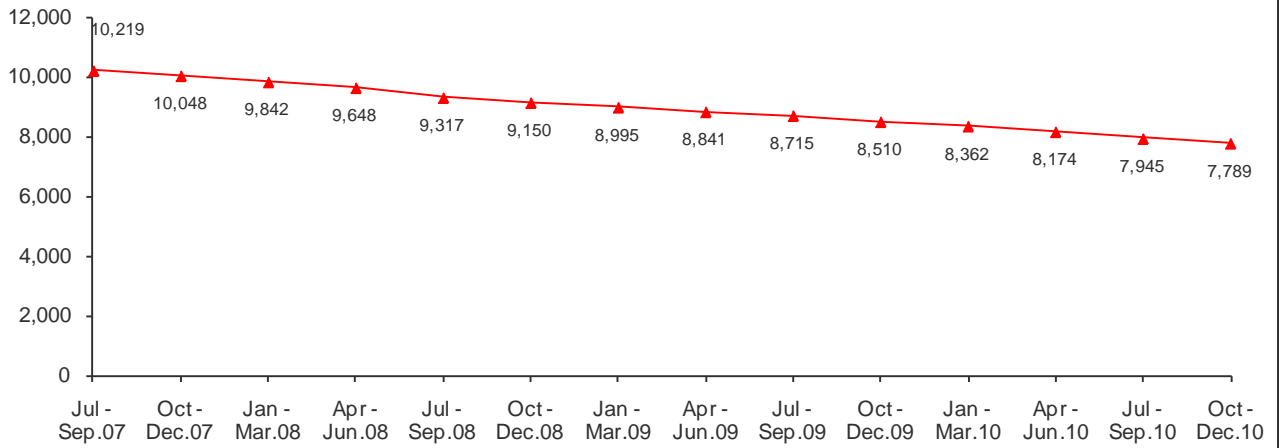
- DHR was asked to provide updates for the audit findings at the last Stat. DHR submitted a thorough Corrective Actions document and they discussed their timeline for how long it would take to implement their actions.

<b>Audit Findings</b>	Federal Expenditures Disallowances of \$9.6 Million Were Paid with General Funds
	Adequate Procedures Were Not in Place to Ensure the Propriety of the Payments to Legal Firms
	Grant Expenditures Were Not Adequately Monitored
	State Procurement Regulations Were Circumvented with the Purchase of 450 Computers
	Deposit Verification Procedures Were Not Adequate
	DHR Had Not Established Effective Monitoring Controls Over Certain Users' Access
	Access and Monitoring Controls Over Critical Production Programs and Data Were Inadequate
	DHR's Internal Network and the Vendor Network Hosting Critical DHR Systems Were Not Adequately Secured
	Adequate accountability and control was not established over equipment.

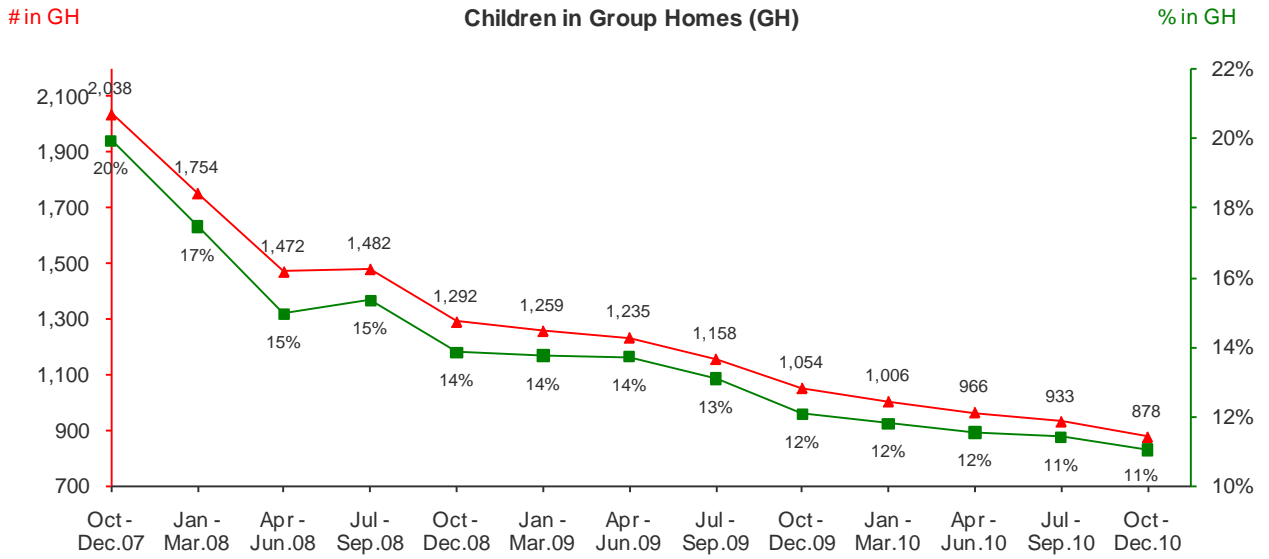
### Social Services Administration (SSA)

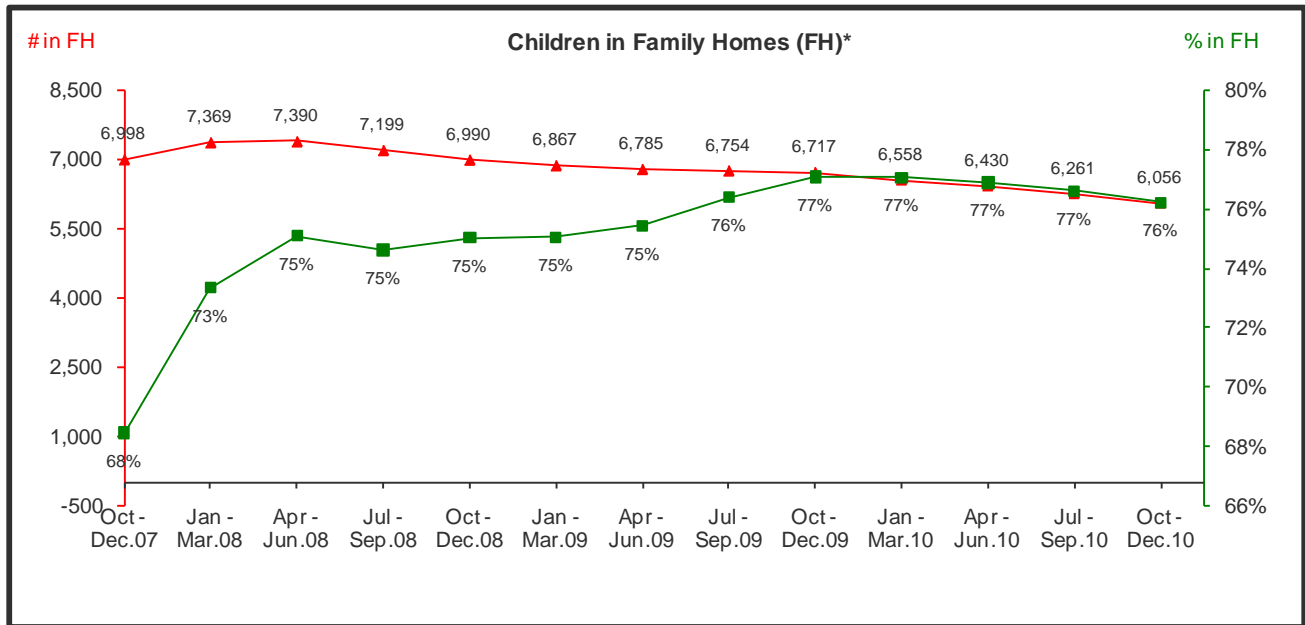
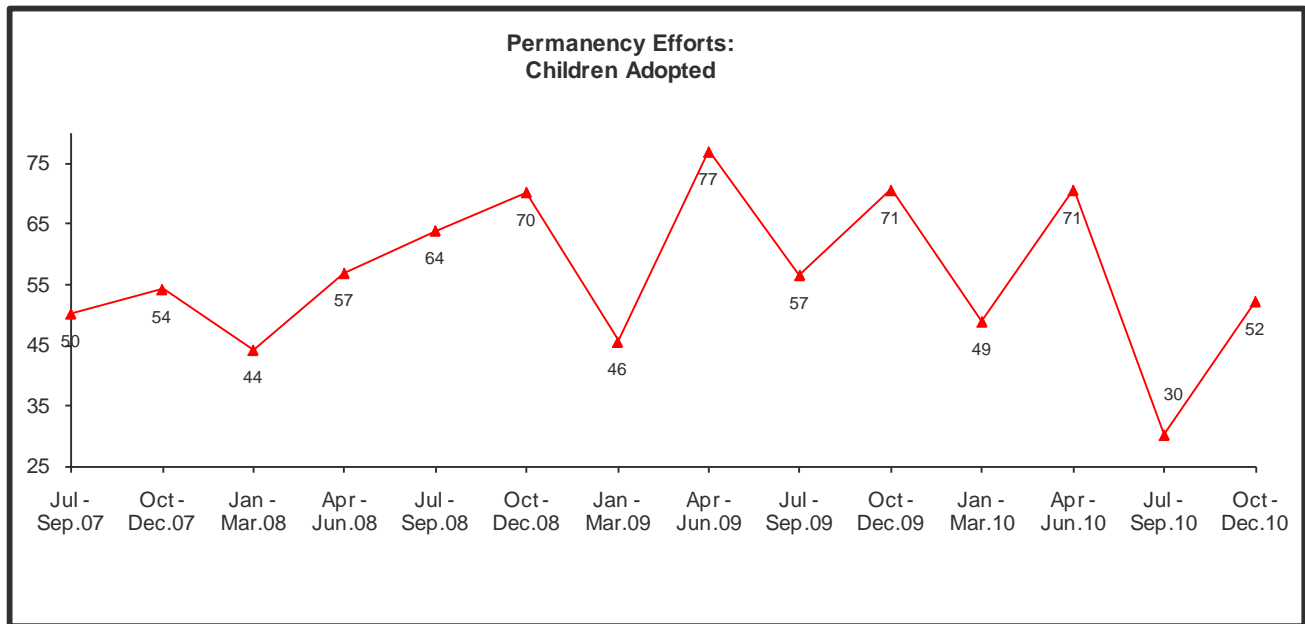
- **PlaceMatters.** DHR was asked to submit to StateStat the quarterly PlaceMatters trend line charts that had been given to StateStat in previous years. The charts below highlight four of the metrics tracked in these charts.

**Number of Children in Out-of-Home Care**



**Children in Group Homes (GH)**





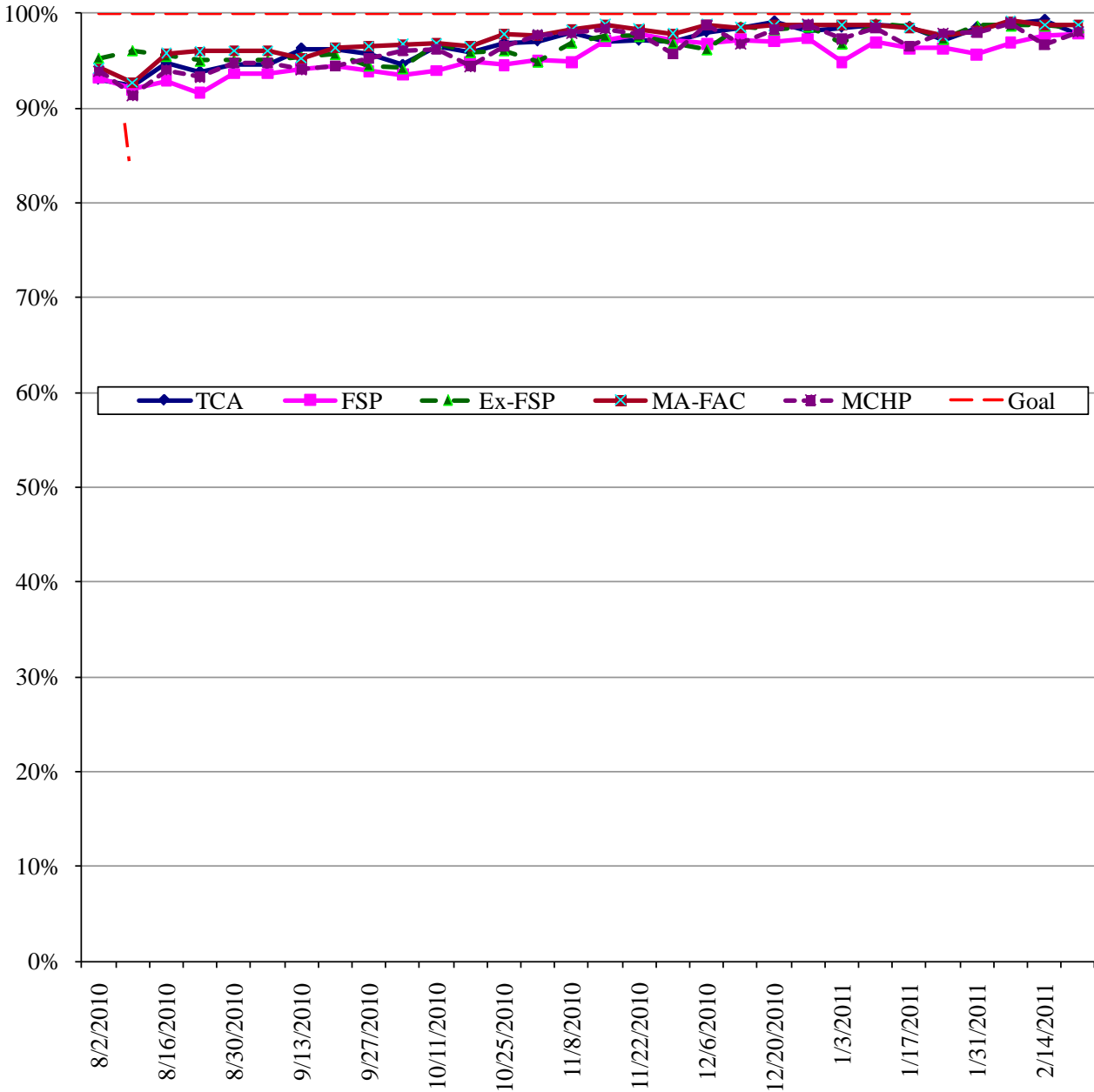
### Family Investment Administration

- Overall Statewide Compliance.** The data below shows the overall statewide compliance rates for Temporary Cash Assistance (TCA), The Food Supplement Programs (FSP, also known as Food Stamps) for Regular and Expedited compliance, Medical Assistance-Family and Children (MA-FAC), and the Maryland Children’s Health Program (MCHP). DHR reports that, statewide, the upward trend in monthly compliance rates for all of the aforementioned programs continued through January of 2011. The data below the monthly report is through the week the ending before February 21, 2011. DHR provided a detailed update.

<b>Approved or Denied Trends</b>							
Compliance Rate (Approved or Denied)	TCA	FSP	Ex-FSP	MA-FAC	MCHP	All Benefits	Goal
December-09	83.3%	82.1%	91.6%	82.6%	76.1%	83.4%	100%
January-10	80.9%	77.3%	91.6%	80.4%	72.2%	80.5%	100%
February-10	80.5%	77.9%	91.8%	81.8%	72.8%	80.9%	100%
March-10	82.5%	77.9%	93.1%	84.4%	75.8%	82.5%	100%
April-10	88.7%	83.2%	93.1%	86.5%	79.7%	86.0%	100%
May-10	92.8%	89.2%	94.1%	90.5%	85.9%	90.6%	100%
June-10	92.7%	89.8%	94.5%	92.5%	89.7%	91.7%	100%
July-10	93.8%	93.6%	95.9%	94.3%	93.2%	94.2%	100%
August-10	94.0%	92.5%	95.4%	95.1%	92.7%	94.0%	100%
September-10	96.3%	94.0%	95.4%	96.6%	95.1%	95.3%	100%
October-10	96.3%	94.5%	95.9%	97.1%	96.1%	95.9%	100%
November-10	97.1%	96.7%	97.0%	98.4%	97.8%	97.4%	100%
December-10	98.5%	97.0%	98.2%	98.6%	98.1%	98.1%	100%
<b>January-11</b>	<b>98.4%</b>	<b>96.5%</b>	<b>98.4%</b>	<b>98.3%</b>	<b>97.9%</b>	<b>97.8%</b>	<b>100%</b>

<b>Approved or Denied Trends</b>							
Compliance Rate (Approved or Denied)	TCA	FSP	Ex-FSP	MA-FAC	MCHP	All Benefits	Goal
8/2/2010	93.0%	93.1%	95.3%	94.2%	93.9%	93.9%	100%
8/9/2010	92.4%	92.0%	96.1%	92.6%	91.3%	93.0%	100%
8/16/2010	94.7%	92.9%	95.5%	95.8%	94.0%	94.4%	100%
8/23/2010	93.8%	91.6%	95.0%	96.0%	93.3%	93.8%	100%
8/30/2010	94.5%	93.6%	95.1%	96.1%	94.7%	94.7%	100%
9/6/2010	94.5%	93.6%	95.1%	96.1%	94.7%	94.7%	100%
9/13/2010	96.3%	94.2%	95.4%	95.2%	94.1%	95.0%	100%
9/20/2010	96.1%	94.4%	95.7%	96.3%	94.4%	95.4%	100%
9/27/2010	95.7%	93.9%	94.5%	96.5%	95.2%	95.0%	100%
10/4/2010	94.5%	93.5%	94.2%	96.7%	96.0%	95.1%	100%
10/11/2010	96.5%	93.9%	96.8%	96.8%	96.2%	95.8%	100%
10/18/2010	95.9%	94.8%	95.9%	96.5%	94.4%	95.6%	100%
10/25/2010	96.8%	94.5%	96.1%	97.8%	96.5%	96.2%	100%
11/1/2010	97.0%	95.0%	94.9%	97.7%	97.7%	96.2%	100%
11/8/2010	97.9%	94.8%	96.9%	98.3%	97.9%	97.0%	100%
11/15/2010	97.0%	97.1%	97.6%	98.8%	98.3%	97.8%	100%
11/22/2010	97.1%	97.9%	97.6%	98.3%	97.8%	97.9%	100%
11/29/2010	97.0%	97.2%	96.9%	97.8%	95.7%	97.2%	100%
12/6/2010	98.0%	96.8%	96.2%	98.8%	98.7%	97.6%	100%
12/13/2010	98.5%	97.2%	98.6%	98.5%	96.8%	98.0%	100%
12/20/2010	99.1%	97.0%	98.3%	98.7%	98.3%	98.2%	100%
12/27/2010	98.1%	97.3%	98.6%	98.7%	98.8%	98.2%	100%
1/3/2011	98.4%	94.9%	96.8%	98.7%	97.3%	97.2%	100%
1/10/2011	98.8%	96.9%	98.9%	98.7%	98.4%	98.3%	100%
1/17/2011	98.5%	96.3%	98.6%	98.4%	96.5%	97.7%	100%
1/24/2011	97.2%	96.3%	97.3%	97.6%	97.9%	97.1%	100%
1/31/2011	98.5%	95.6%	98.7%	98.1%	98.0%	97.5%	100%
2/7/2011	98.9%	96.9%	98.7%	99.2%	99.0%	98.4%	100%
2/14/2011	99.3%	97.6%	98.7%	98.7%	96.7%	98.3%	100%
<b>2/21/2011</b>	<b>97.8%</b>	<b>97.8%</b>	<b>98.5%</b>	<b>98.8%</b>	<b>98.0%</b>	<b>98.3%</b>	<b>100%</b>

### Compliance Rate for Approved or Denied TCA, FSP, Ex-FSP, MA-FAC, MCHP



- **Shortfall.** According to the article below, if Congress does not vote to provide additional TANF funds to Maryland, there will be a \$34 million dollar shortfall. According to the article, DHR planned their budget based on the fact they believed that they would be receiving these funds. DHR stated that they are formulating a plan to address a shortfall if it occurs.

### Md. fund for needy families may have \$34M shortfall

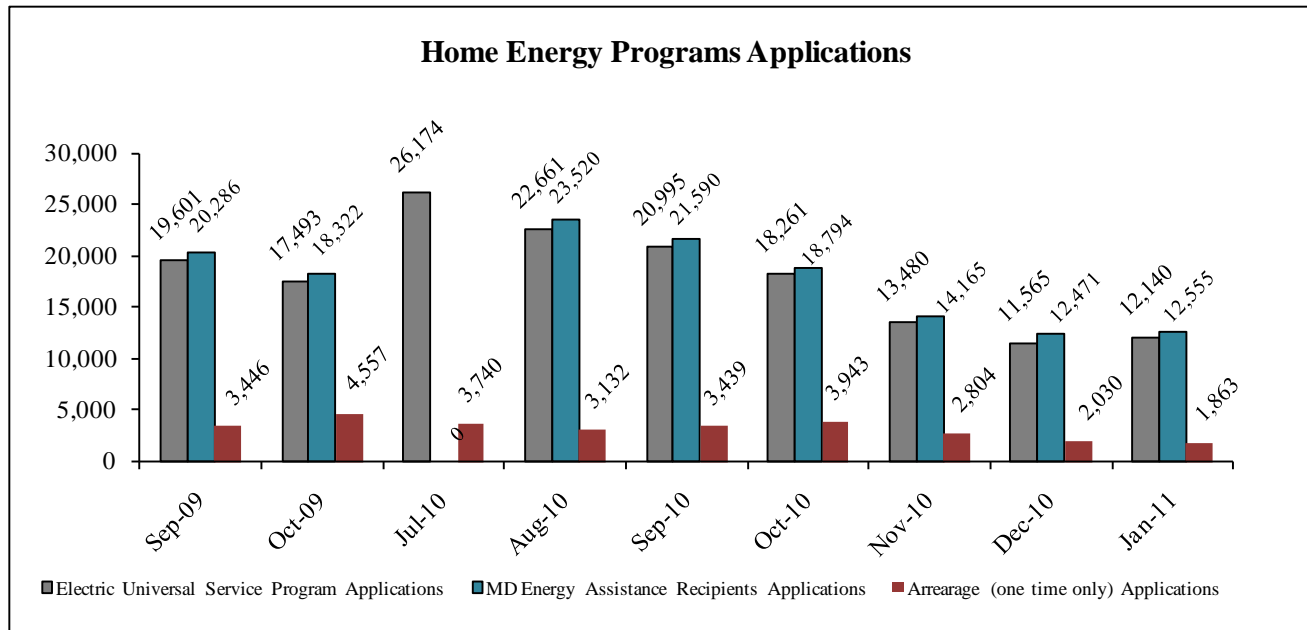
Posted: 7:00 pm Sun, January 30, 2011  
 By marylandreporter.com  
 Megan Poiniski

If Congress does not approve additional funds for the Temporary Assistance for Needy Families program, the Maryland Department of Human Resources will be scrambling to offset a \$34 million shortfall.

The TANF program, funded by the federal government and administered here by Human Resources, helps families with short-term financial needs. Every year, Maryland receives a base grant of \$229 million, according to interim Human Resources Secretary Ted Dallas. The program has also received money from the federal stimulus program, as well as TANF contingency funds set aside for states with large caseload increases.

- **Energy Assistance.** DHR, at a previous Stat, was asked to provide the average length of time to input cases by jurisdiction. They provided some data showing applications to be entered, as a percent of applications received. This is a good metric to track in future Stats. DHR addressed the data below and how they are addressing the demand for EUSP and Arrearages.

Jurisdiction	11/5/10	11/19/10	12/3/10	12/17/10	1/14/11	1/28/11	2/11/11	2/25/11
Baltimore City	3,600	3,435	3,334	3,521	2,364	2,024	993	2,899
Harford	162	199	256	155	98	97	85	120
Frederick	326	285	282	202	113	107	51	76
Somerset (Includes Worcester, Wiconico)	366	391	326	276	126	103	70	74
Caroline	37	52	67	3	19	23	38	27
Talbot	15	19	28	23	64	43	33	23
Prince George's	19	91	25	30	35	40	21	20
Dorchester	105	50	40	51	25	21	31	20
Kent	25	35	40	21	24	25	24	17
Baltimore	153	213	203	71	23	0	0	15
Anne Arundel	107	37	33	85	115	87	61	0
Queen Anne's	53	50	20	47	30	18	10	0
Calvert (includes Charles, St Mary's)	11	5	34	2	1	1	0	0
Montgomery	145	0	0	0	145	0	0	0
Carroll	30	25	34	25	23	0	0	0
Allegany	38	0	0	32	0	0	0	0
Cecil Co.	0	0	4	22	0	0	0	0
Garrett	0	0	0	20	0	0	0	0
Washington	35	0	20	0	0	0	0	0
Howard	0	0	0	0	0	0	0	0
<b>TOTAL</b>	<b>5,192</b>	<b>4,887</b>	<b>4,722</b>	<b>4,544</b>	<b>3,205</b>	<b>2,589</b>	<b>1,417</b>	<b>3,291</b>
Sorted by most recent period								
Generally, numbers less than 50 represent what has been received within the last day.								
Notes 2/25/11								
Balt City did not receive applications for 8 days from its district centers due to the unavailability of courier service.								
Harford had staff absences.								



- FSP Opt-in Provision** (GDU Goal 12- End Childhood Hunger in Maryland by 2015). DHR has been working with MSDE to include an “opt-in” section for FSP in the FARMS application. All jurisdictions have sent out the application with the opt-in language; however, only 5 LEA’s have been able to effectively gather their opt-in data to date.

DHR last reported that the FIA Bureau of Systems Development and Management were working with these five LEAs to produce and send to DHR a secure file of the families who opted-in; however, an MOU will be needed. The Department’s Office of the Attorney General (OAG) is working with MSDE’s OAG regarding the sufficiency of the current MOU to determine if its scope includes data sharing between the LEAs and DHR. If they determine that the scope is not sufficient, then the parties will proceed with separate MOUs between them.

As for the remaining LEAs, Frederick, Kent, and Montgomery want to work with their local departments of social services to arrange for WEX interns to gather the data. If this attempt is successful, DHR will discuss using WEX interns for the other 16 jurisdictions. DHR has submitted a written request to Under Secretary Concannon about the possibility of using USDA funding to help the LEAs who cannot currently automate their data, do so. DHR provided an update.

Contributing Actions/Deliverables	Implementation Targets	Delivery Date	Progress to Date	Explanatory Comments
<b>A. Increase the Participation Rate for the Number of Children in the Food Supplemental Program by 9% by December 2010</b>				
FSP opt-in addition to FARMS Benefit Application	All jurisdictions distribute new application; automate and report data back to DHR; DHR target eligible population	TBD after we confer with LEAs.	All jurisdictions included the opt-in language in the application; 5 jurisdictions have the data automated and will send to DHR. We will work with 3 volunteer non-automated jurisdictions to use WEX interns to gather that data. Conference call scheduled 11/9/10 with 5 automated jurisdictions.	TBD- how remaining 16 jurisdictions will automate and report opt-in data back to DHR