

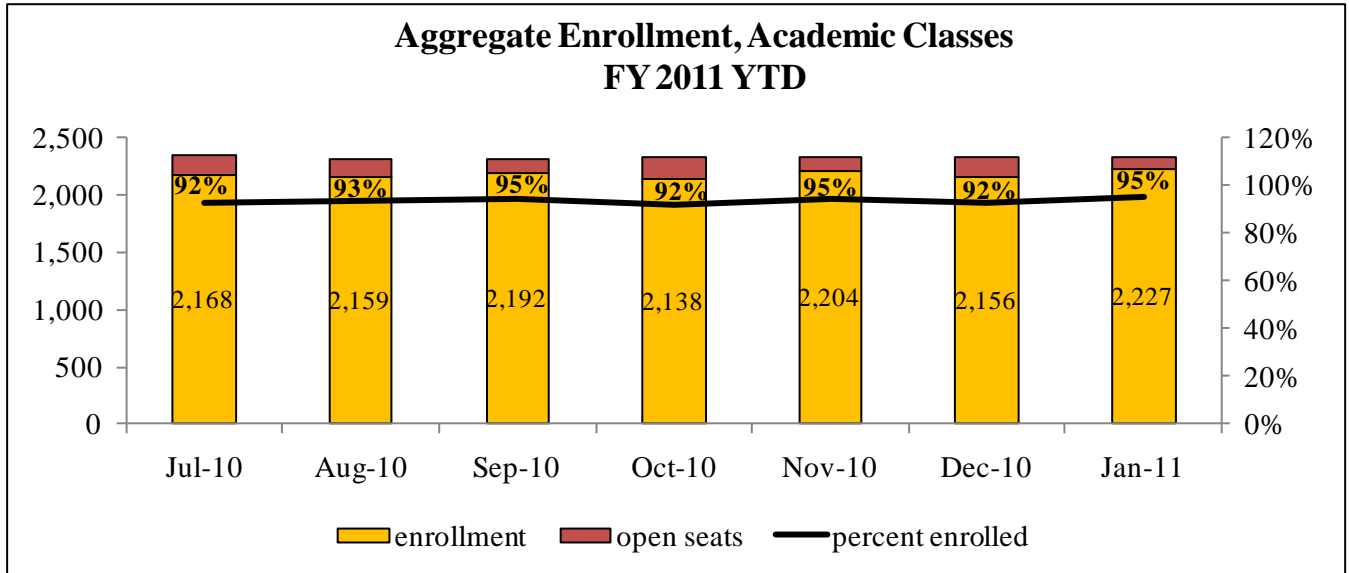
Meeting Summary

The following is a summary of the issues that were discussed at the DPSCS/DOC Stat on March 17, 2011. Analysis is provided by StateStat and the Governor's Delivery Unit (GDU).

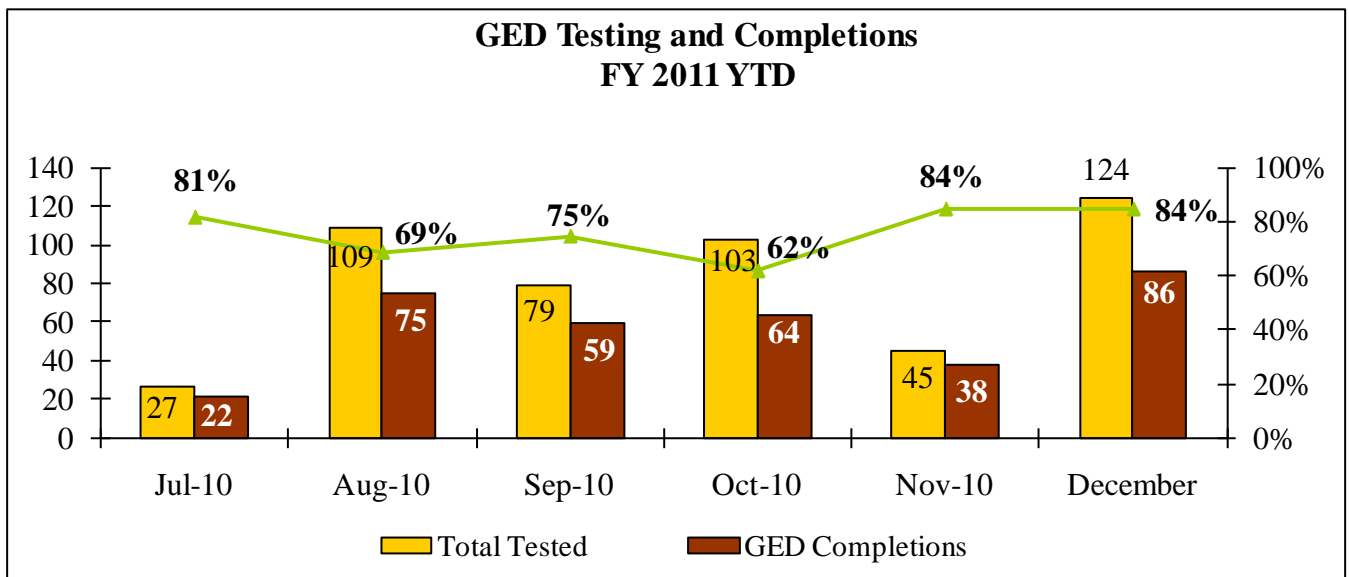
Correctional Education

- **Best Practices for GED Completion (follow up).** As discussed at the previous Correctional Education Stat meeting, in November, every student that took the GED test at Eastern Correctional Institute East (ECI-E) completed. The principal at that school reported the following best practices:
 - Maximize instructional time in the classroom. ECI-E has dedicated teachers who believe in hard work and work as a team
 - Follow academic curriculum
 - Emphasize the importance of obtaining a GED at all levels. Well over half of the students who pass the GED began their education at ECI-East in the Intermediate Low, Intermediate High or the Basic education classes. Between July 2010 – December 2011 (FY2011) 32 of the 39 students who passed the GED began in lower level classes. The teachers at the Intermediate Levels follow a school wide blueprint or plan as to how a student can earn a GED. This plan includes TABE testing, OPT testing, class work, and homework. All of the instructional staff must buy into the program and then the students must buy into it. ECI-E believes in giving students the opportunity to succeed, but also believes that it is important not to keep students in school who are not putting forth effort in the class.
 - Promotes a culture of success for GED completions as well as completions at all levels of education (Academic, Occupational, and Transitional)
 - Uses knowledge gained from being part of instructional teams at several other correctional facilities (MTC, HLTBC, BCF, and MCIW) and then implements the best practices from these institutions at **ECI-East**. Example - The principal should be involved in every phase of the educational process and be the instructional leader of the staff.

- **Academic Enrollment.** Aggregate enrollment as a percentage of capacity in academic classes increased in January, as did raw enrollment, after dipping slightly in December.



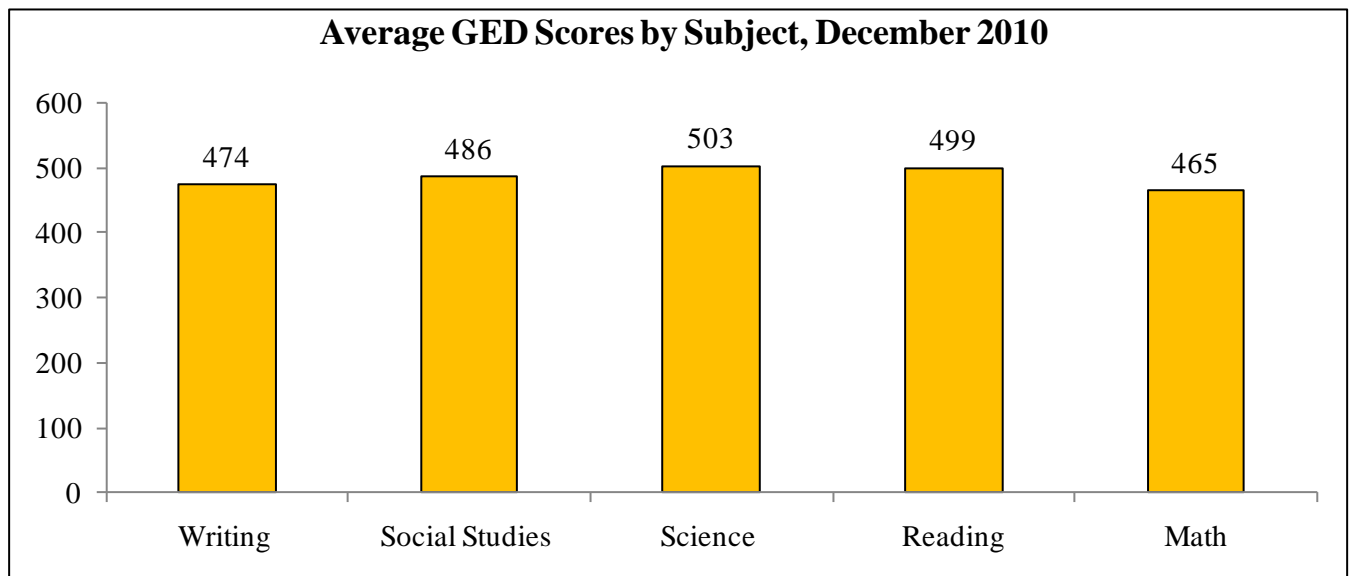
- GED Testing and Completions.** The average percentage of students who completed their GED tests remained steady at 84 percent in December, while the raw numbers tested and completed both increased. At BrockBridge Correctional Facility (BCF), six out of six students completed the GED. On average, 33 percent of students at Maryland Correctional Institute Jessup (MCIJ) and Eastern Pre-Release Unit (EPRU) completed GED testing in December as shown in the table below.



Institution	Completion Rate	Total Tested
BCF	100%	6
WCI	88%	16
MCIH	79%	14
JCI	75%	8
MCTC	70%	27
OSTC	67%	6
RCI	66%	29
JPRU	50%	6
EPRU	33%	3
MCIJ	33%	9

- Average GED Scores.** In December 2010, Math scores were on average once again the lowest. Writing scores were the second lowest. Last month, the lowest average score of the students that were tested were in writing, rather than math. DLLR and DOC have worked to improve Math scores among CE students.

The Department noted that it has recently completed a best practices manual for math, and that it is now returning its attention to writing to review current practices and determine if any additional best practices can be included.



Inmate IDs

(GDU Goal 4 - Reduce Violent Crime in Maryland by 20% by the End of 2012)

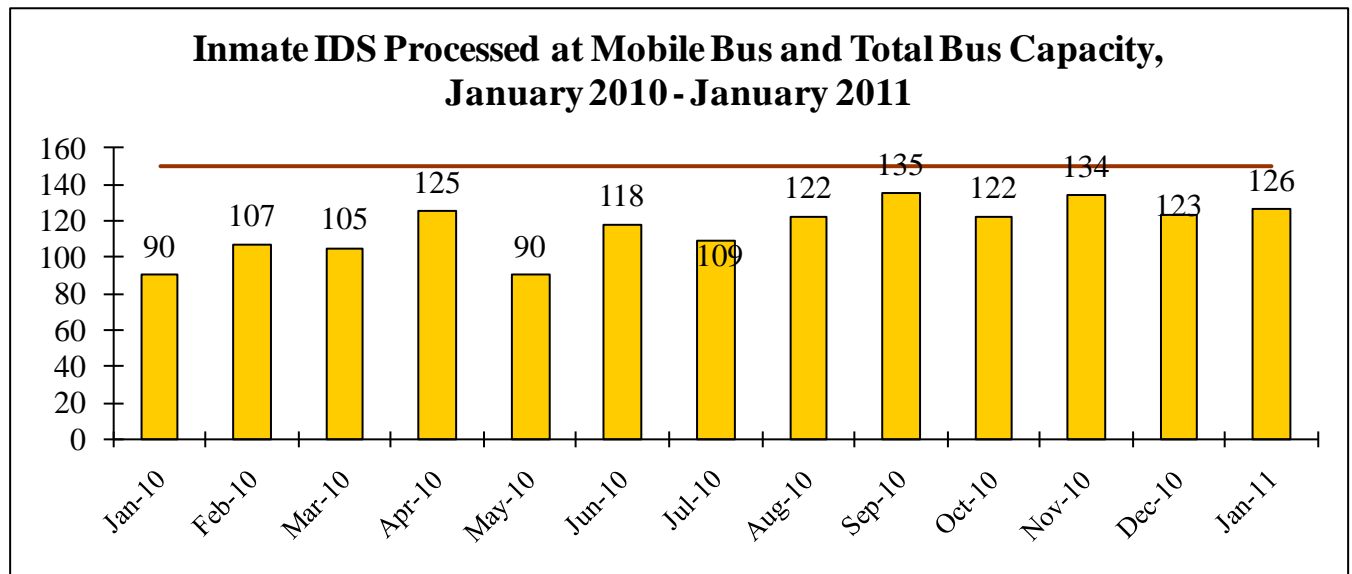
- State ID Cards Issued to Offenders Before or On Release.** The Department has set a target for 80% of offenders to receive a MVA ID card up to 60 days from release. The target leaves room for those offenders who decline to participate in the Inmate ID program. Between January 2010 and January 2011, there were a total of 6,867 release; 22 percent received an ID prior to release and 17

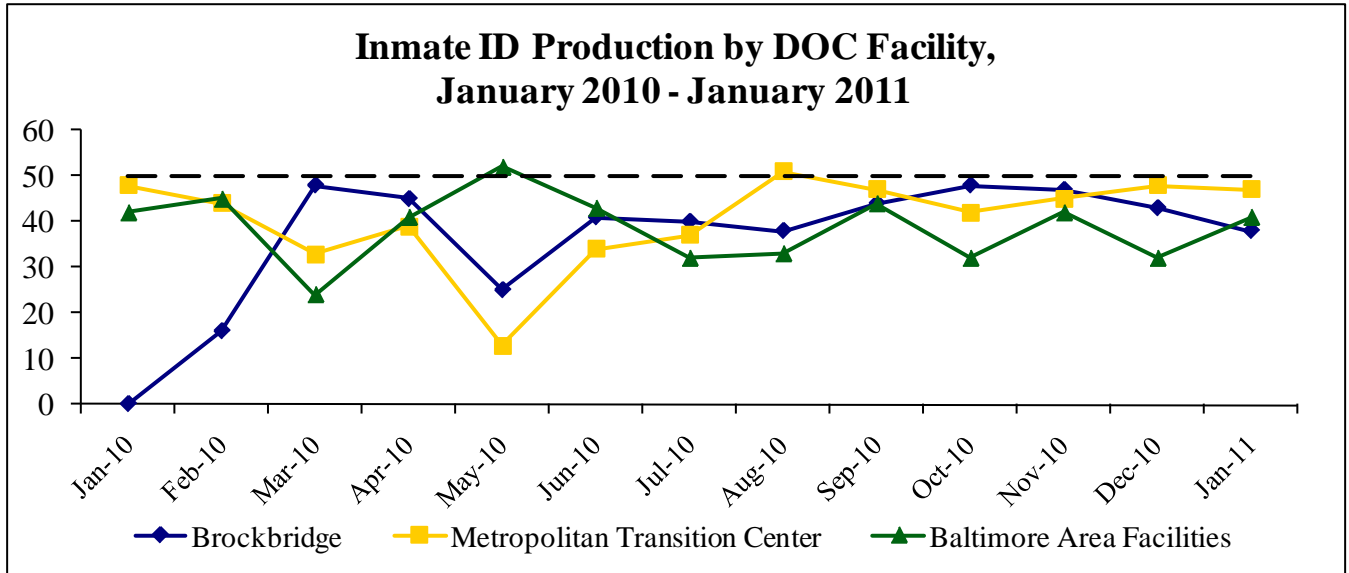
percent received an ID after release. This shows that, on average, 39 percent of offenders received MVA IDs up to 60 days from release. Over the last two months, however, there has been some progress; 42 percent received an ID up to 60 days from release.

Actions	Agency Responsible	Implementation Targets	Delivery Date	Progress to Date
A1) Improve outcomes for offenders through effective re-entry planning and programming.				
State ID cards issued to offenders before or on release	DPSCS/MVA	80% of offenders receiving IDs w/in 60 days	2012	December 2010-January 2011 439 IDs; 1,036 releases (42%)

- Mobile Bus ID Production.** The mobile bus currently visits three sites (Brockbridge, Metropolitan Transition Center, and Baltimore-area facilities) to process inmate IDs on-site. The bus has an overall capacity of 50 inmates per site per month, for a total capacity of 150 IDs per month.

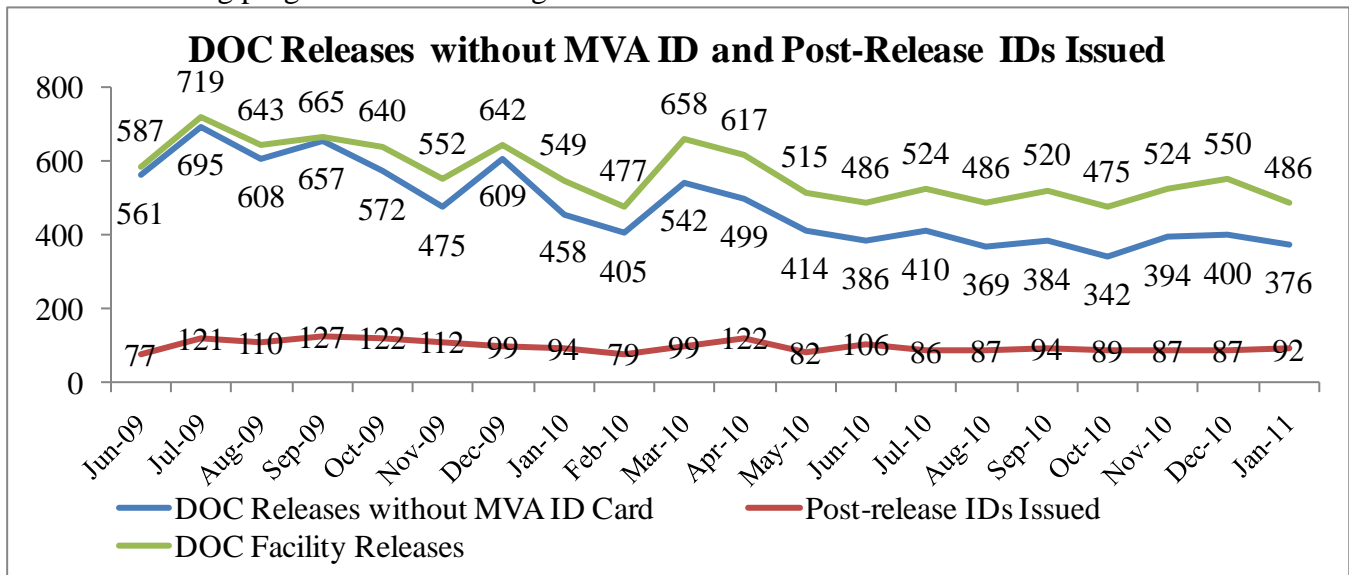
The Department discussed the reasons why the bus has not met capacity in recent months, including issues with inmate paperwork not matching and issues in ensuring that inmates make their appointment instead of participating in other activities such as work release programs. As a result, StateStat will be reviewing the process to determine if additional screening capacity or procedural changes can be made to boost ID production at the mobile bus.





Post-Release Inmate IDs

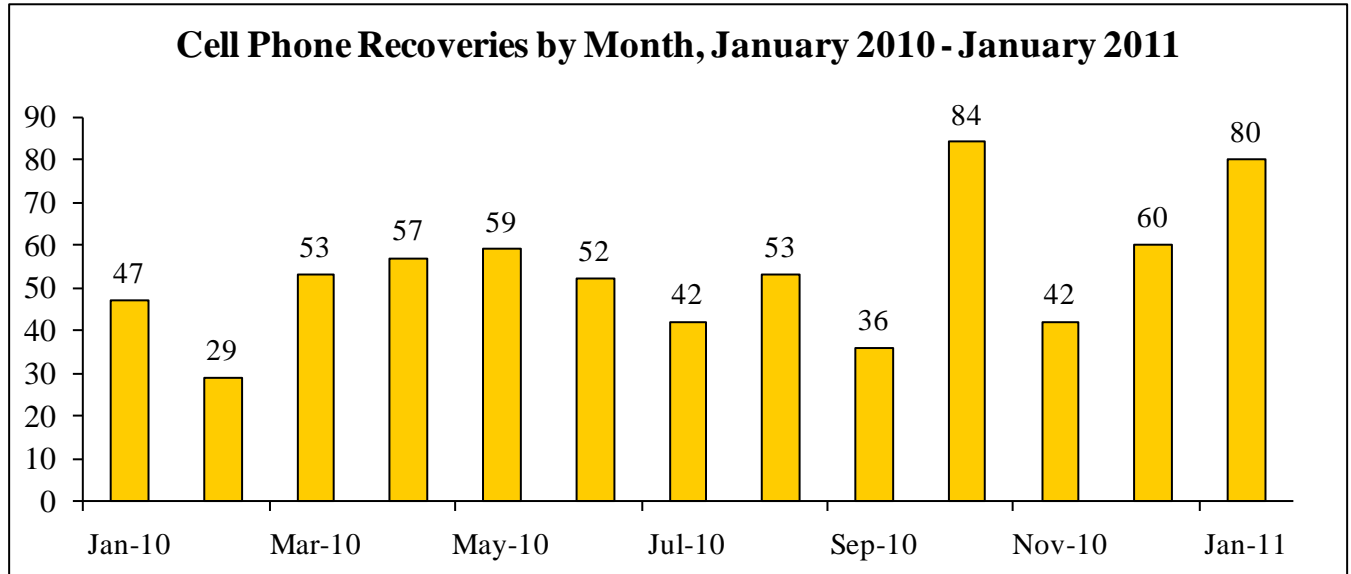
- Overview.** Due to the limitations of the MVA ID bus, not all inmates can be processed prior to release. As a result, inmates are eligible to receive a free MVA ID up to two months after their release. In order to facilitate post-release IDs, the Department works with inmates to obtain a social security card and birth certificate prior to release and provides educational materials on the benefit of receiving an ID as well as how to go about getting a free ID. This documentation can be requested 120 days prior to the inmate's release.
- Current Data.** While overall post-release IDs issued dropped 3 percent between CY 2009 and CY 2010, overall releases dropped 13 percent over the same time period, indicating that the Department is still making progress with educating inmates.



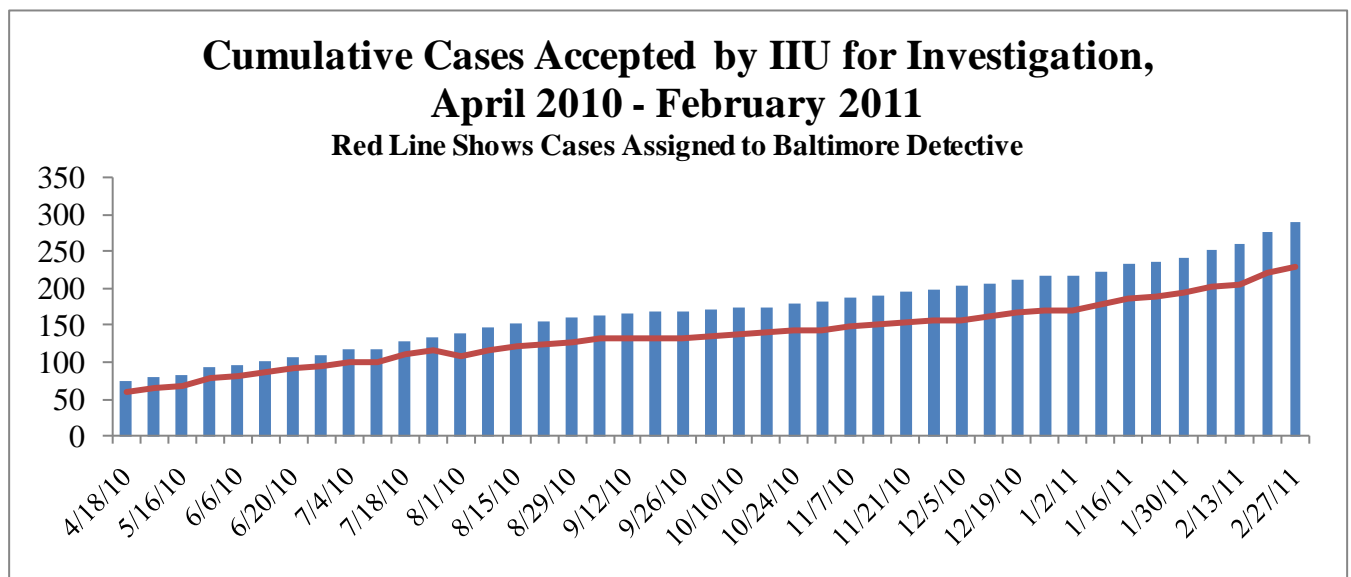
Note: data on inmate releases with MVA IDs appears to have been inconsistently collected prior to June 2009.

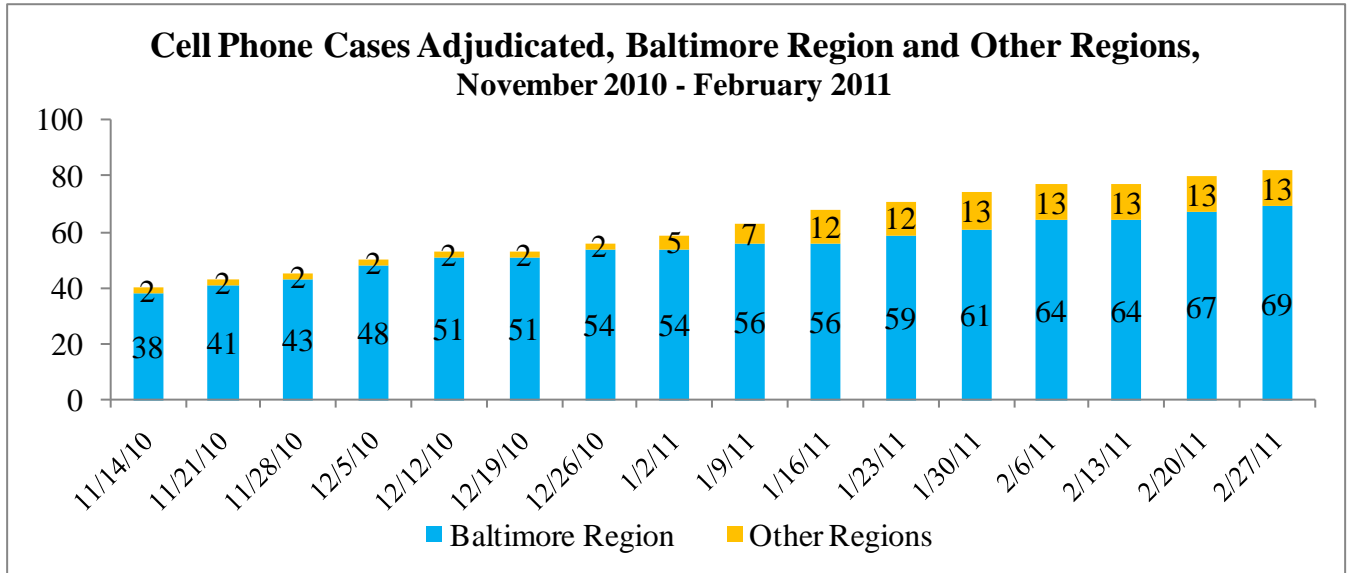
Contraband Cell Phones

- **Cell Phone Seizures.** Overall cell phone seizures at DOC facilities have seen a recent increase, with significant spikes in October 2010 and January 2011. These spikes have generally been preceded by lower than average seizures. This could be because of varying levels of effort (intentional or intended) or because of specific institutional factors that allow more contraband to enter facilities.



- **Cell Phone Investigations.** Since April 2010, the Department’s internal investigations unit has accepted 290 cell phone cases for investigation; 230 (79 percent) are located in the Baltimore region and handled by a dedicated cell phone investigator. The remaining 21 percent are investigated by regular IIU teams. To date, 83 cases have been brought to court and adjudicated (one case is counted twice due to an appeal). Note that these totals include investigations at Division of Pre-Trial and Detention Services (DPDS).



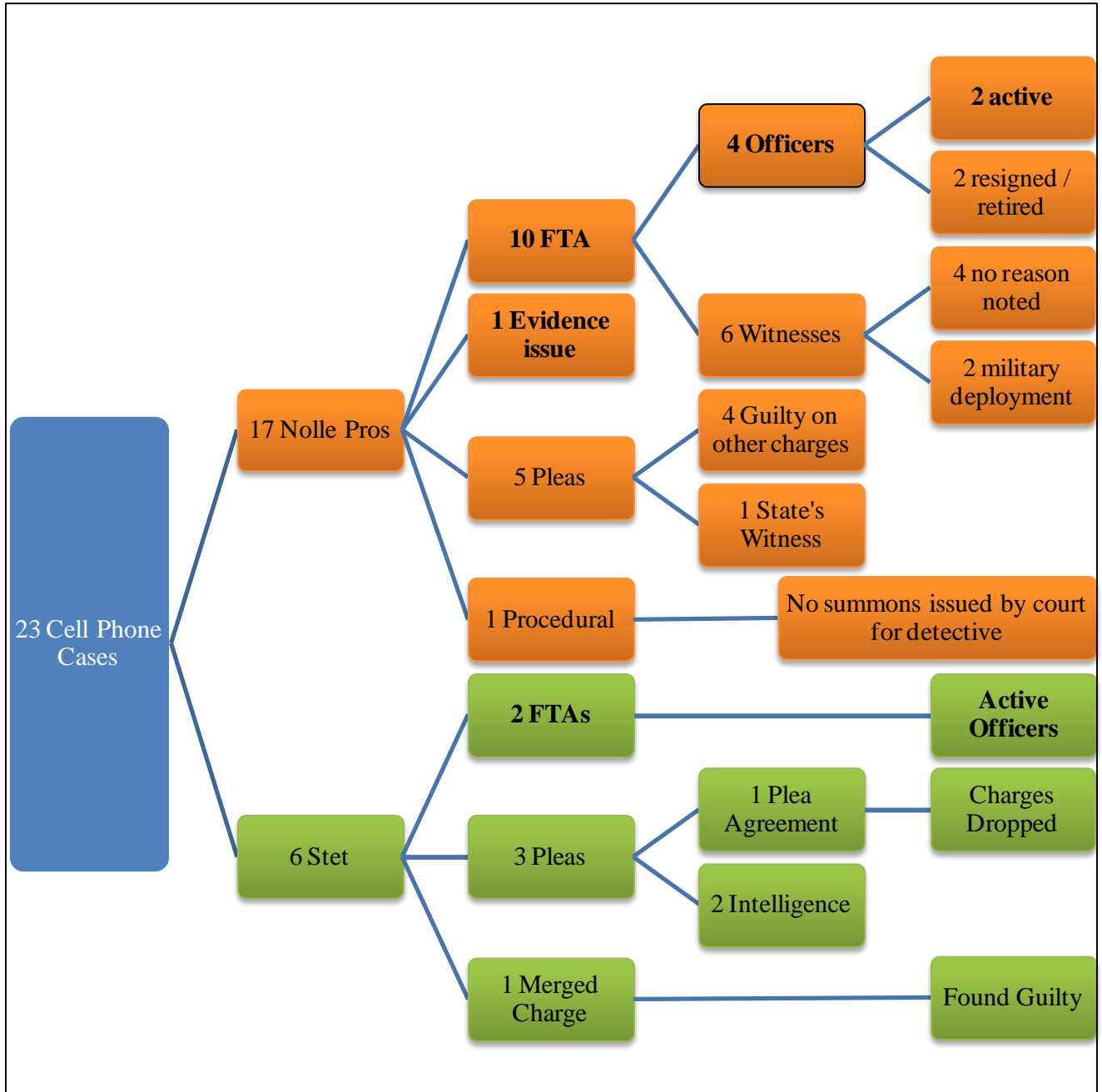


- Investigation Outcomes.** The panel will recall the previous discussion of the 23 cell phone cases that were put on the stet docket or *nolle prosequi*. At the panel’s request, the Department reviewed these cases to determine what reason, if any, resulted in a stet or nolle pross. The results of this analysis are shown in the graphic below. Of 23 stets/nolle pross cases, 5 cases (22 percent) were due to officers not appearing or evidence issues.

The Department noted that the majority of these cases occurred in early to mid 2010. After discovering this issue in 2010, the Department instituted procedures to notify institutions when officers were summoned to court to ensure that officers were present at trial. Similarly, the Department noted that it continues to work with States’ Attorney Offices to notify them of officers who have resigned or retired.

In addition, the panel and the Department discussed witness issues. The Department noted that most inmates who are witnesses may have been release from pre-trial detention prior to the trial. The Department continues to work to ensure that witnesses appear at trial and investigating these cases further.

Analysis note: Cases are counted as nolle pross even when there was a plea deal which involved the defendant pleading guilty to another charge. The purpose is to track how cell phone charges are dealt with regardless



Maryland Correctional Enterprises (MCE)

(GDU Goal 4 - Reduce Violent Crime in Maryland by 20% by the End of 2012)

- Expand Job Training Programming and Employment at MCE.** For FY2010, the Department set a target of 5% annual expansion for the number of inmates employed by MCE as one of the initiatives toward reducing violent crime in Maryland by 20% by the end of 2012. DOC met this target with an average of 2,038 inmates employed for FY10 (1,876 average number of inmates employed for FY09).

The 2011 FYTD average is 2,073. In January, the number of inmates employed decreased by one employee to 2,098 employees, which is still an increase of 33 employees since November.

Actions	Agency Responsible	Implementation Targets	Delivery Date	Progress to Date
A1) Improve outcomes for offenders through effective re-entry planning and programming.				
Expand job training programming and employment at MCE	DPSCS	5% annual expansion of number employed by MCE	2010	2010- 2,038 (8.6% increase from FY09) 2011 (to date)- 2,073

Re-entry Plans

(GDU Goal 4 - Reduce Violent Crime in Maryland by 20% by the End of 2012)

- Determine Dynamic Risk Factors and Formulate Re-Entry Plans.** For FY 2010, DOC set a target that 100% of new intakes should have re-entry plans and 40% of standing caseloads should have plans per year for the next 2.5 years. When last assessed, 99% of new intakes had a plan and standing caseloads were receiving plans at the time of case review.

Actions	Agency Responsible	Implementation Targets	Delivery Date	Progress to Date
A1) Improve outcomes for offenders through effective re-entry planning and programming.				
Determine dynamic risk factors and formulate re-entry plans.	DPSCS	100% new intakes with plans; 40% per year for next 2.5 years for standing caseloads	2010	99% of new intakes currently have a plan; standing caseloads are receiving plans at time of case review