

## Meeting Summary

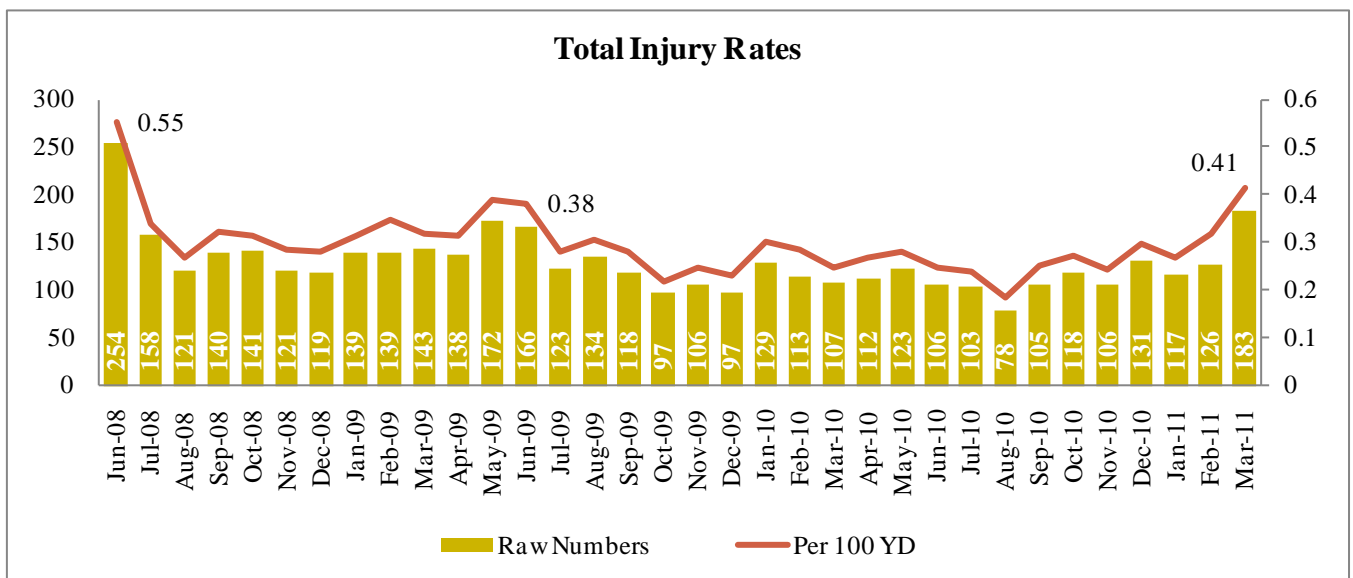
Following is a summary of issues discussed at the DJS Stat on April 22, 2011. Analysis is provided by StateStat and the Governor's Delivery Unit (GDU).

### Follow-Up

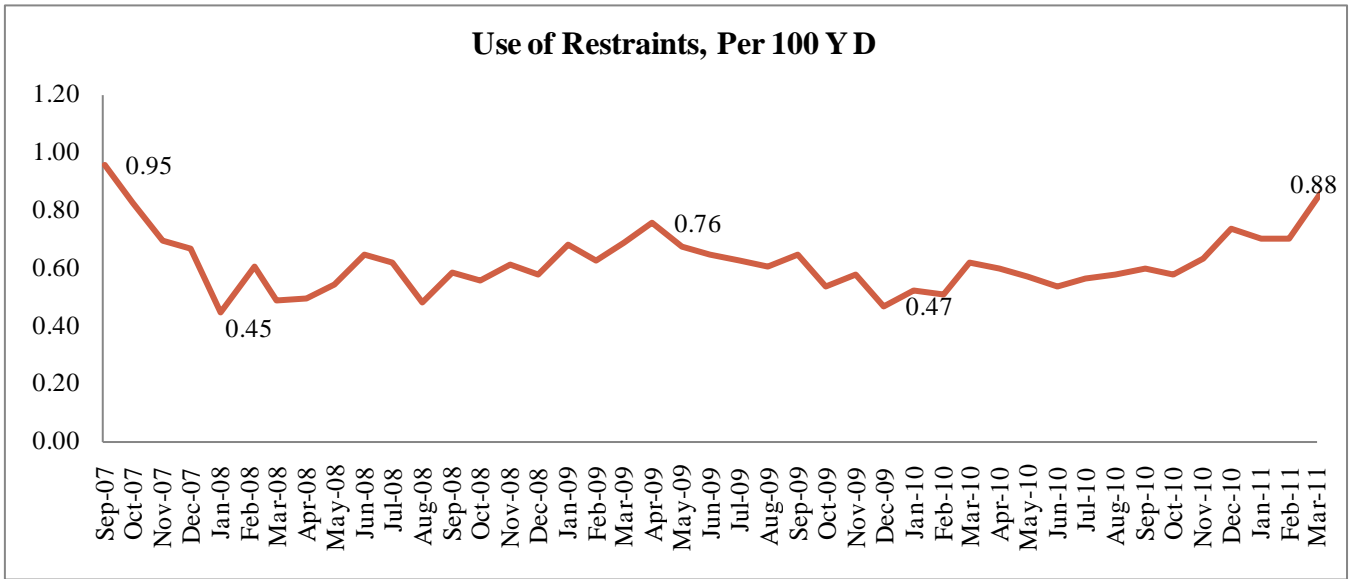
- **Dr. Berk.** DJS was asked to take a few cases that have been reviewed in the past and identify indicators where changes need to be made. Patterns were to be identified such as charges that take place when a youth is young, cases dismissed in court, and instances where charges were dismissed while a youth was on probation. DJS was, then, given the suggestion to refer these cases to Dr. Berk from the University of Pennsylvania for analysis. Dr. Berk called into the StateStat meeting and provided an update on his research.
- **Girls Services.** DJS was asked to prepare a 1-2 page document highlighting current services for girls as well as timelines for additional services that will be provided in the future. DJS was asked to provide some updates for evening reporting centers and they stated that the two Prince George's County evening reporting centers have a combined capacity of 25, 10 slots at the Green Valley Academy in Temple Hills (the southern area of the county) and 15 slots at the Annapolis Road Academy in Bladensburg (the northern area of the county). In Baltimore City, PACT has a capacity of 15, and the Day/Evening Reporting Center can serve a total of 40 youth; 25 during the day, and 15 in the evening.

### Placements

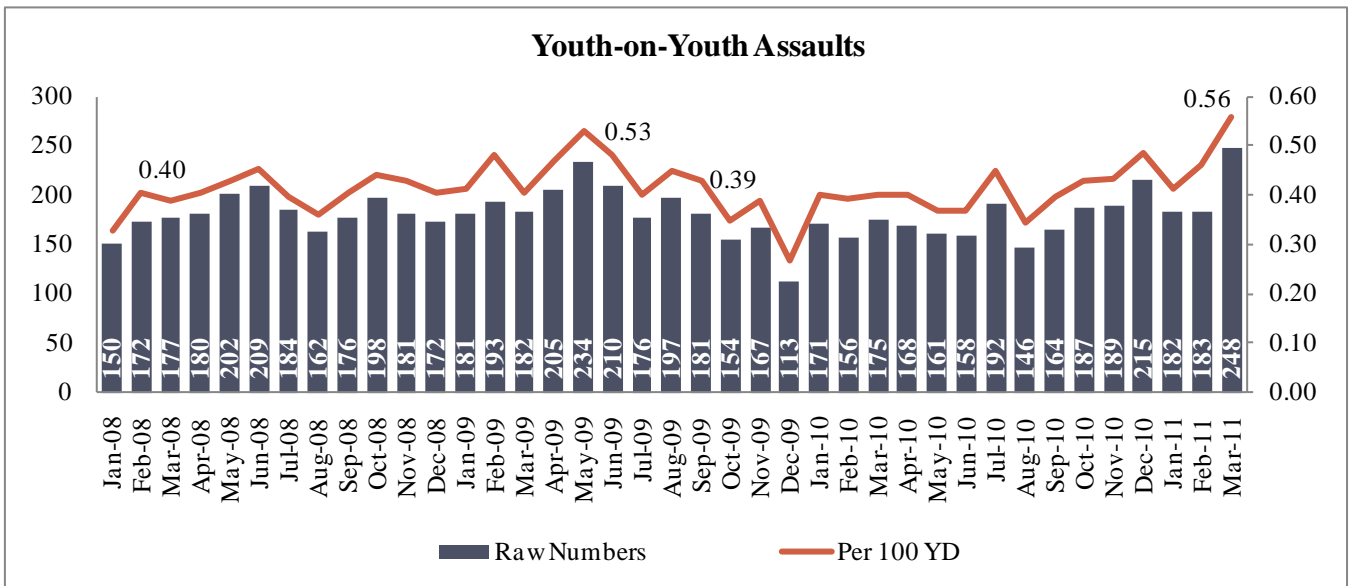
- **Injury Rates at Facilities.** According to the chart below, the total injury rate per 100 youth days is at its highest point since June of 2008. At the previous Stat, DJS reported that medical issues such as asthma attacks fall into the Injury category. DJS was asked if a breakdown can be done in the template so that injuries can be highlighted based on negative incidents in a placement. DJS reports that they are working on recoding incidents by severity levels in the incident database. Once this is completed, it will be incorporated into the template. DJS stated that they will provide further analysis on the total injury rate data at the next Stat.

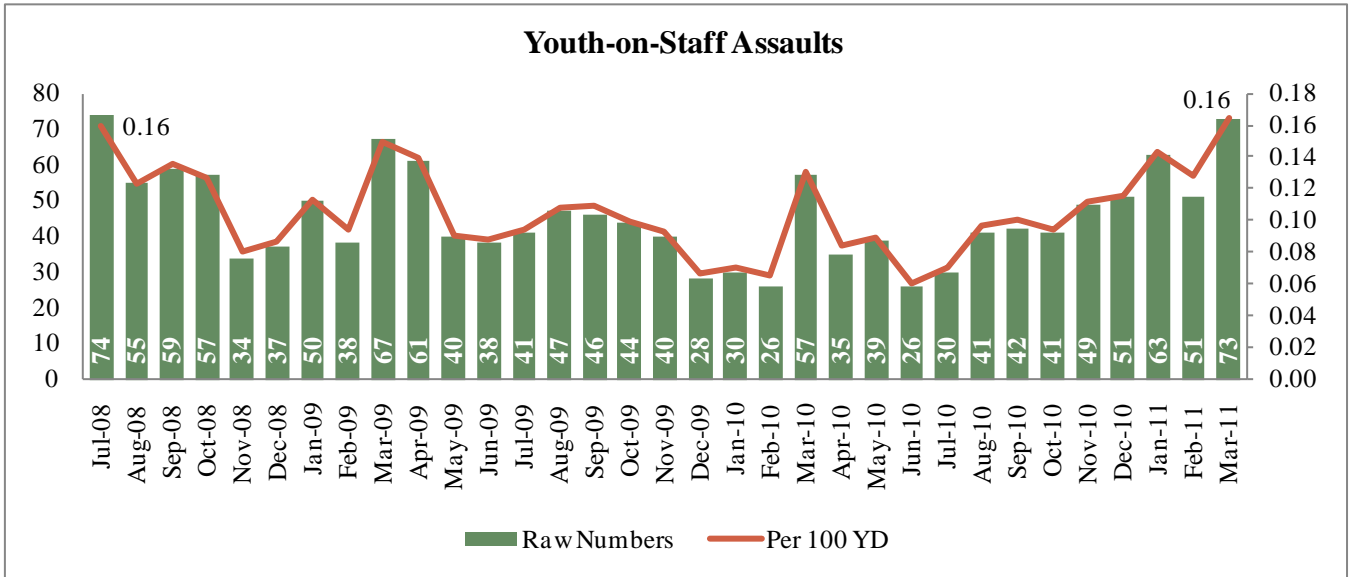


- Restraint Use.** The data below shows the Use of Restraints at DJS facilities. As indicated, the rate for March was significantly high and it should be noted that this is the highest rate since September of 2007. DJS stated that small groups of youths at two facilities contributed to this rise in the use of restraints but DJS was asked to breakdown the exact times when restraints had to be used and what is being done so that restraint use can be reduced.

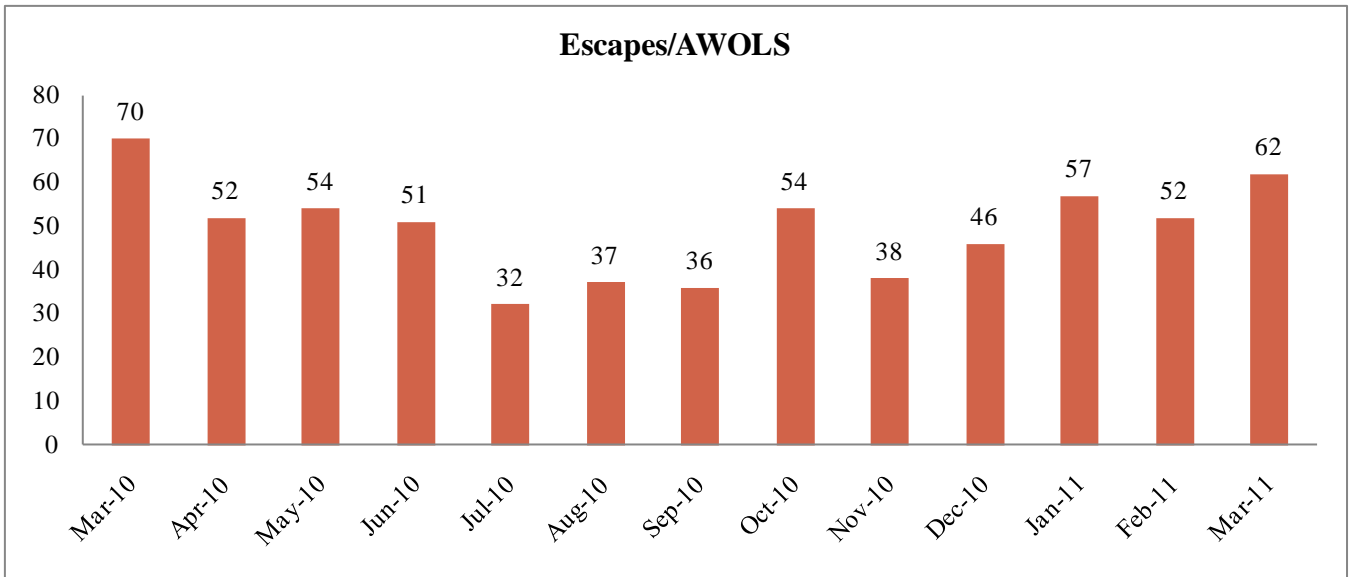


- Physical Assaults.** Youth-on-Youth Assaults is at its highest point since tracking began in January of 2008. Youth-on-Staff Assaults is at its highest point since July of 2008. DJS stated that they will provide updates on all 248 youth-on-youth assaults at the next Stat. Also, DJS discussed how youth are charged with assault after each incident.



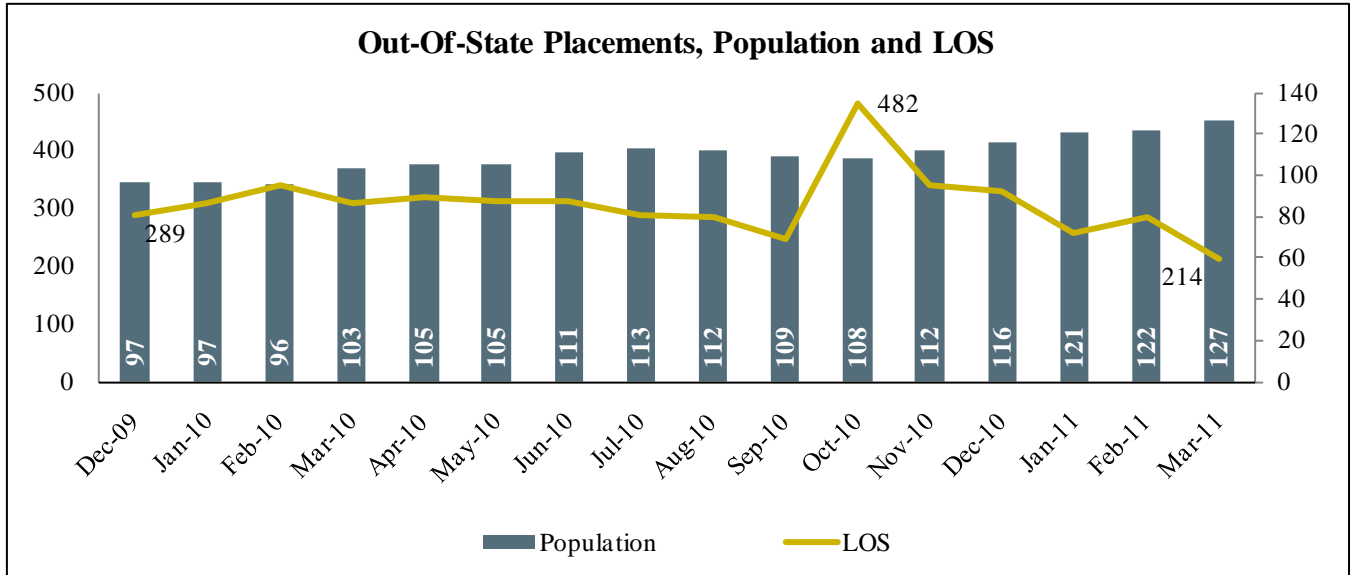


- Escapes/AWOLS.** Escapes/AWOLS are at their highest point since March of 2010. According to the template, the AWOLS have taken place at Privately Operated facilities. DJS was asked to provide updates for the next Stat which includes the actions taken once youth are AWOL. DJS also stated that they have good coordination with local police and Maryland State Police once youth are AWOL from a placement.



- Out-of-State Placements and Length of Stay.** The chart below addresses the population in out-of-state placements and the length of stay for the youth. The length of stay has declined in the past four months from a rate of 482 in October 2010, which was the highest rate since StateStat began measuring length of stay, to its lowest point since September of 2009. However, the population rose to its highest point since February of 2008 and it is still climbing.

As a follow-up item, DJS was asked to provide a breakdown of staff secure vs. secure as far as ADP so that a presentation can be made to DHMH. DJS states that they are working on recoding placements by security levels and once this is completed it will be incorporated into the template. The panel may wish to inquire:



**Community Supervision**

- VPI Youth Arrests.** The rate of youth on VPI status has steadily risen every year and the arrest rates have either declined or stayed steady since the program’s inception. However, according to the chart below, the amount of VPI youth arrested was at its highest point since November of 2009. It should be noted that the Arrest Rate jumped from 2.8% in December of 2010 to 5.3% in February of this year. DJS is going to do a case by case analysis on what is driving this rate.

### VPI Youth, Arrests

