

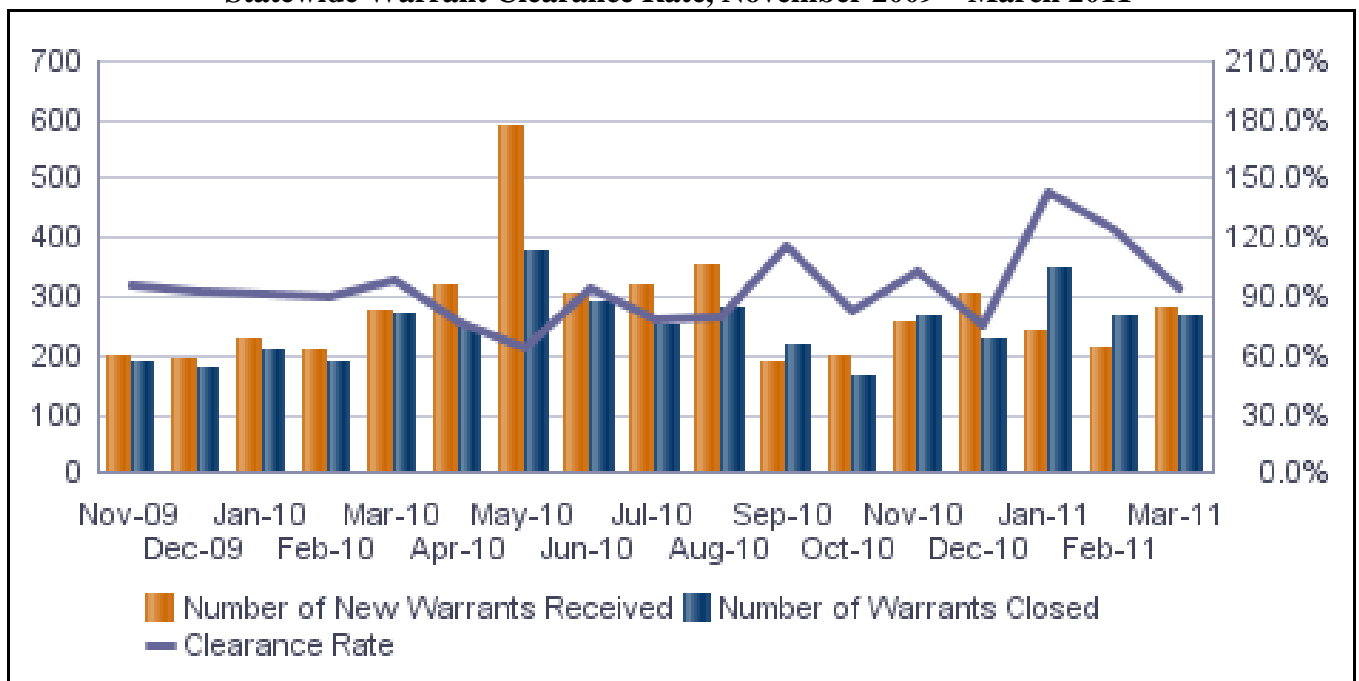
DPSCS Meeting Summary

Following is a summary of issues discussed at the DPSCS—DPP/DPDS Stat on April 28, 2011. Analysis is provided by StateStat and the Governor’s Delivery Unit (GDU).

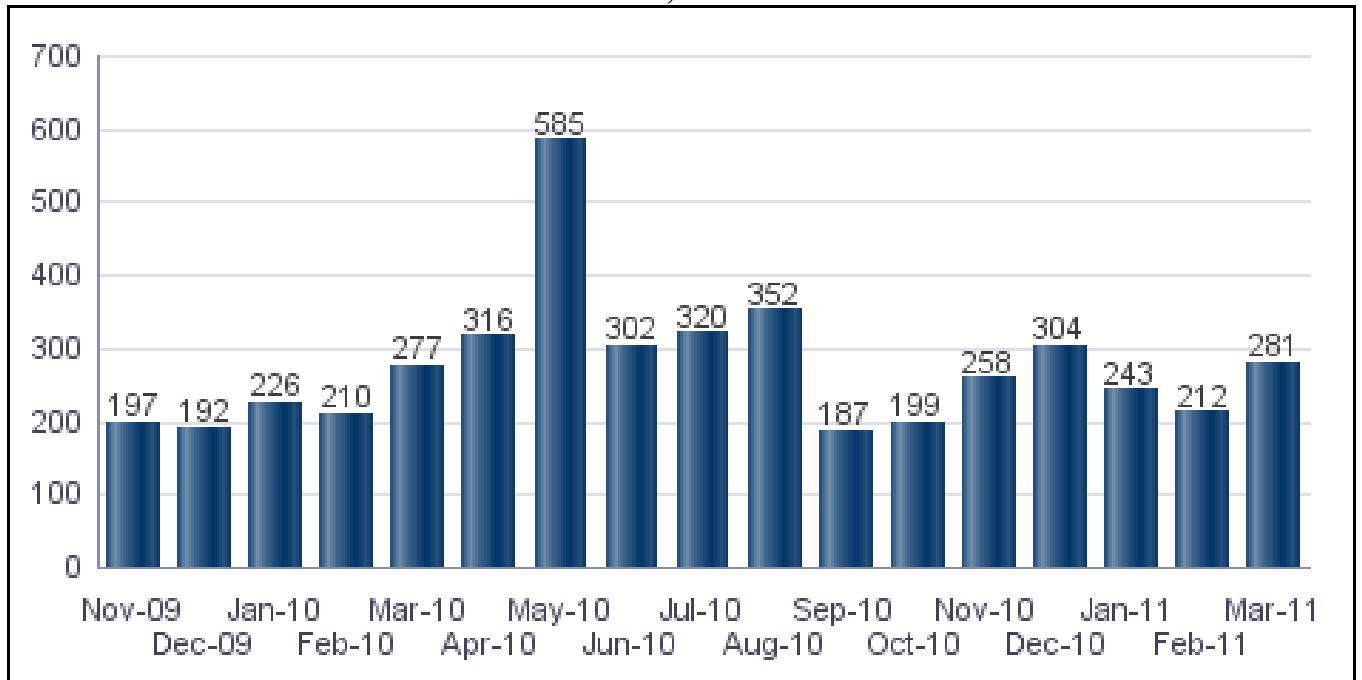
Warrants

- **Overall Warrant Clearance.** Statewide, the Division of Parole and Probation (DPP) warrant clearance rate dropped below 100 percent but is still above the Department’s goal of 85 percent clearance rate. The primary reason for the decreasing clearance rate was a 28 percent increase in warrants received compared with February 2011.

Statewide Warrant Clearance Rate, November 2009 – March 2011

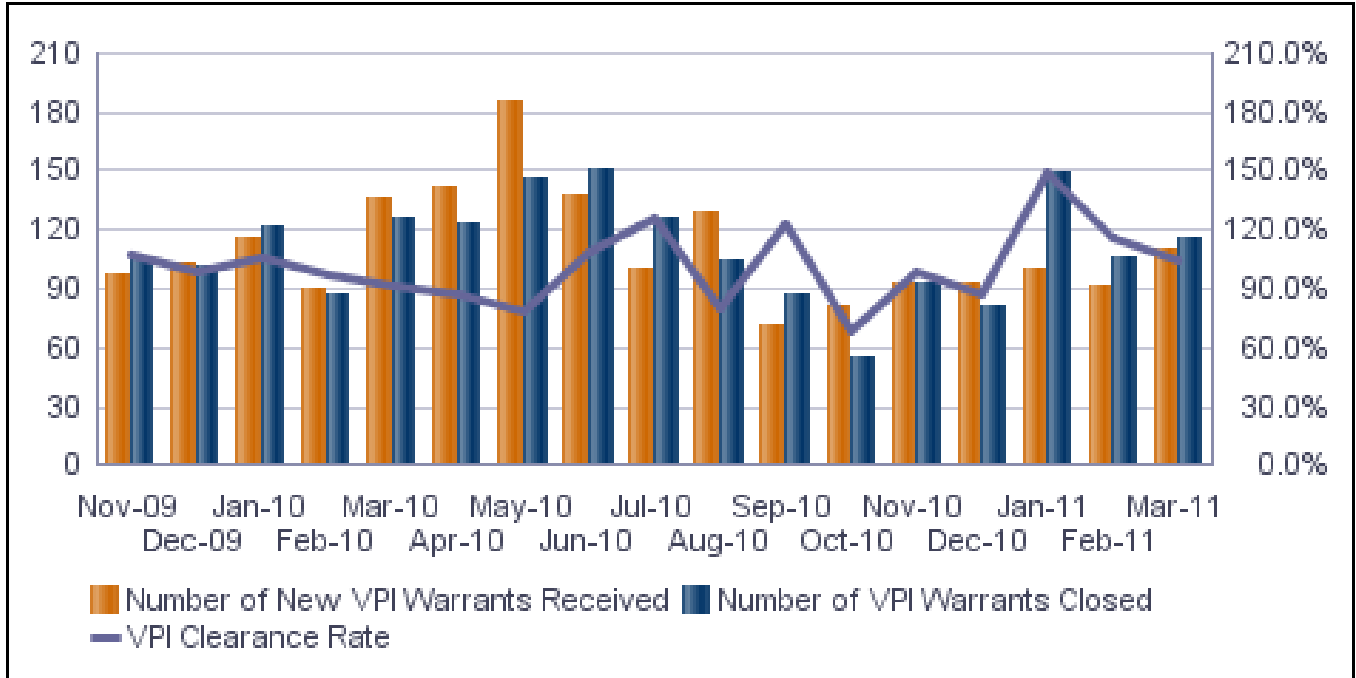


DPP New Warrants Received, November 2009 – March 2011

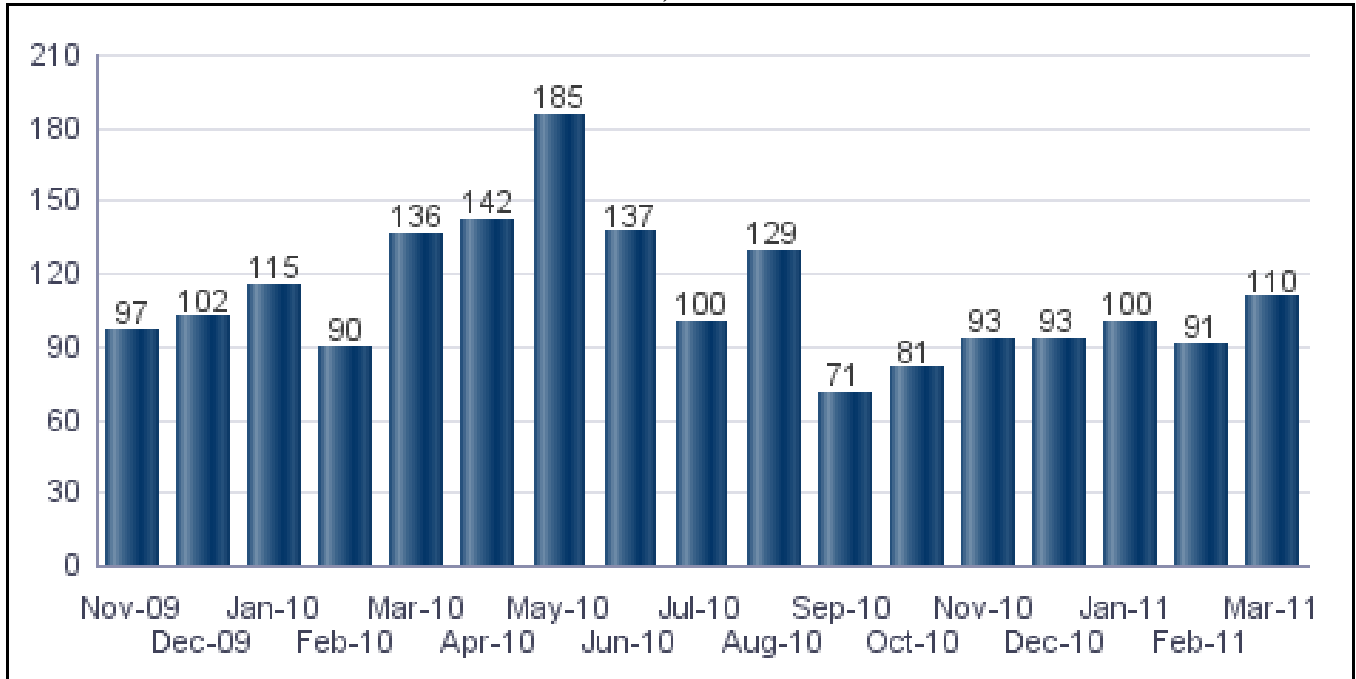


- Violence Prevention Initiative (VPI) Warrant Clearance.** As with overall DPP warrants, the VPI clearance rate decreased from 115 percent to 105 percent, largely due to an increase in new VPI warrants received. However, the Department maintained a clearance rate over 100 percent indicating the overall caseload of warrants decreased slightly. This may be partially due to the effect of warrant prioritization efforts by DPP.

VPI Warrant Clearance Rate, November 2009 – March 2011



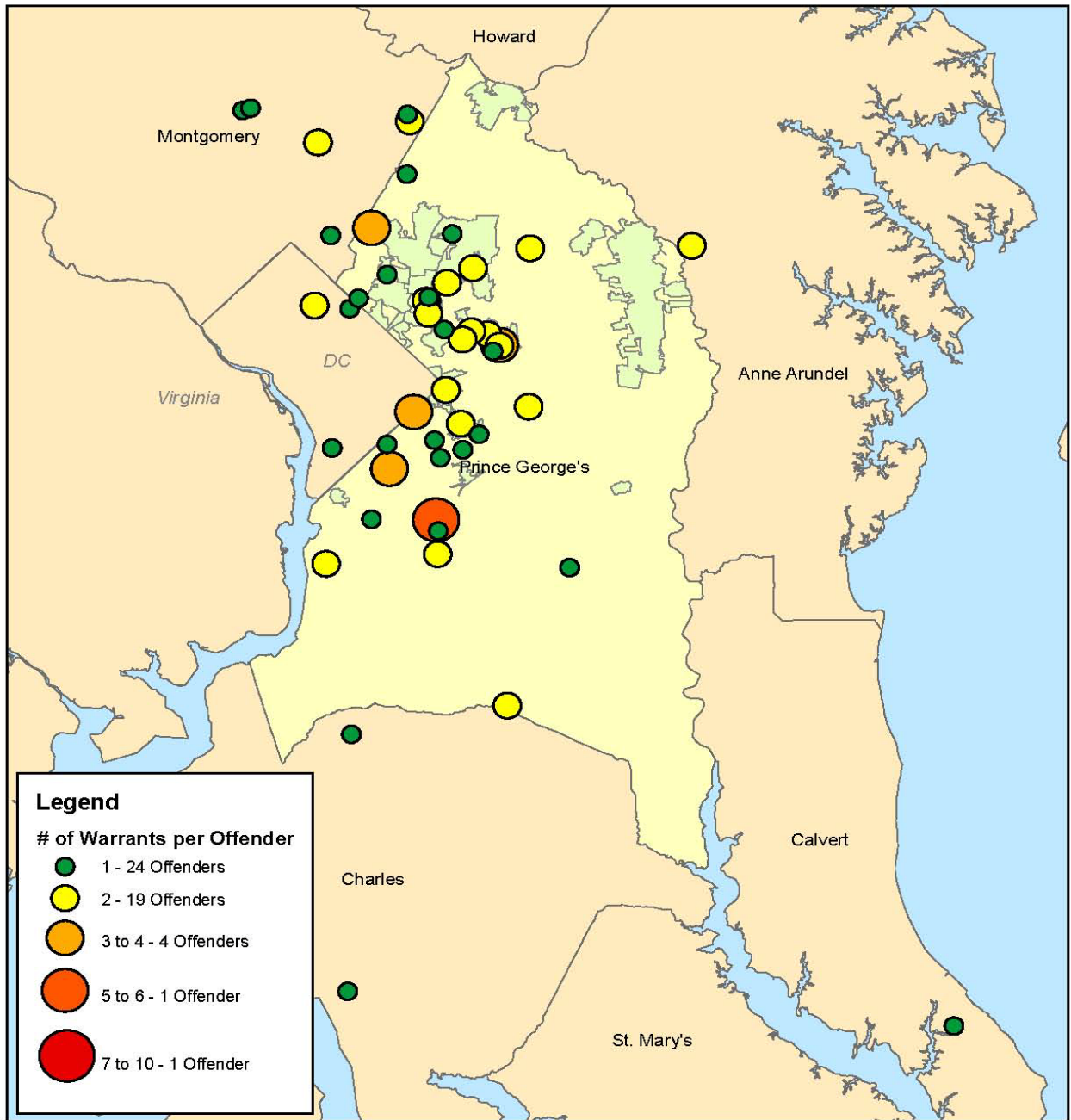
New VPI Warrants Received, November 2009 – March 2011



- **Prince George's County Warrants.** Using warrants.now, DPSCS identified 104 warrants for VPI supervisees that were assigned to the Prince George's County Sheriff's Office; a map of these warrants is shown below, and shows the location of VPI offenders with warrants as well as the number of warrants assigned to the offender. In contrast, as of March 2011 the Capital Area Region Fugitive Task Force (CARFTF), which covers Prince George's and Montgomery Counties, only has 30 VPI warrants. Statewide there are only 183 open VPI warrants. This suggests that warrants.now can identify additional outstanding warrants for DPP to target.

The Department noted that it had reviewed the list; not all of the warrants were assigned to DPP (as DPP can only serve violation of probation warrants). However, the panel and the Department discussed strategies to ensure that all VPI warrants are assigned to a law enforcement agency.

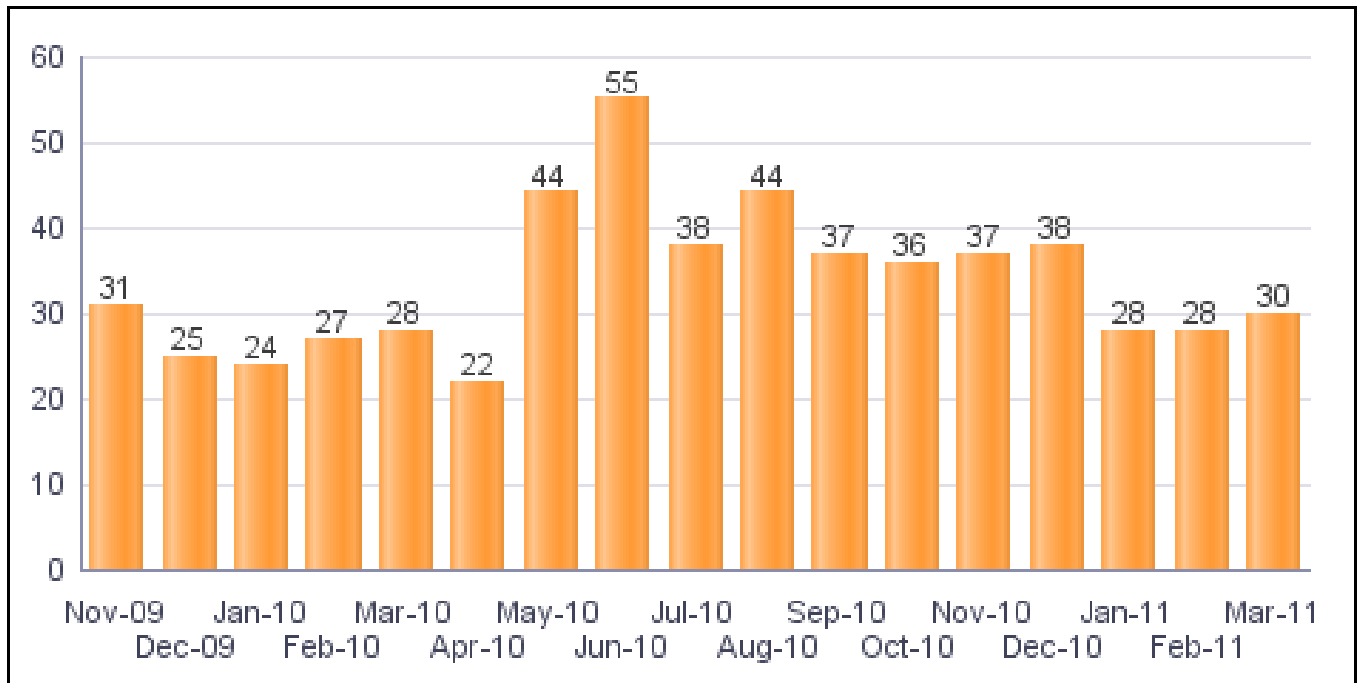
Prince George's County VPI Offenders With An Open Warrant(s)



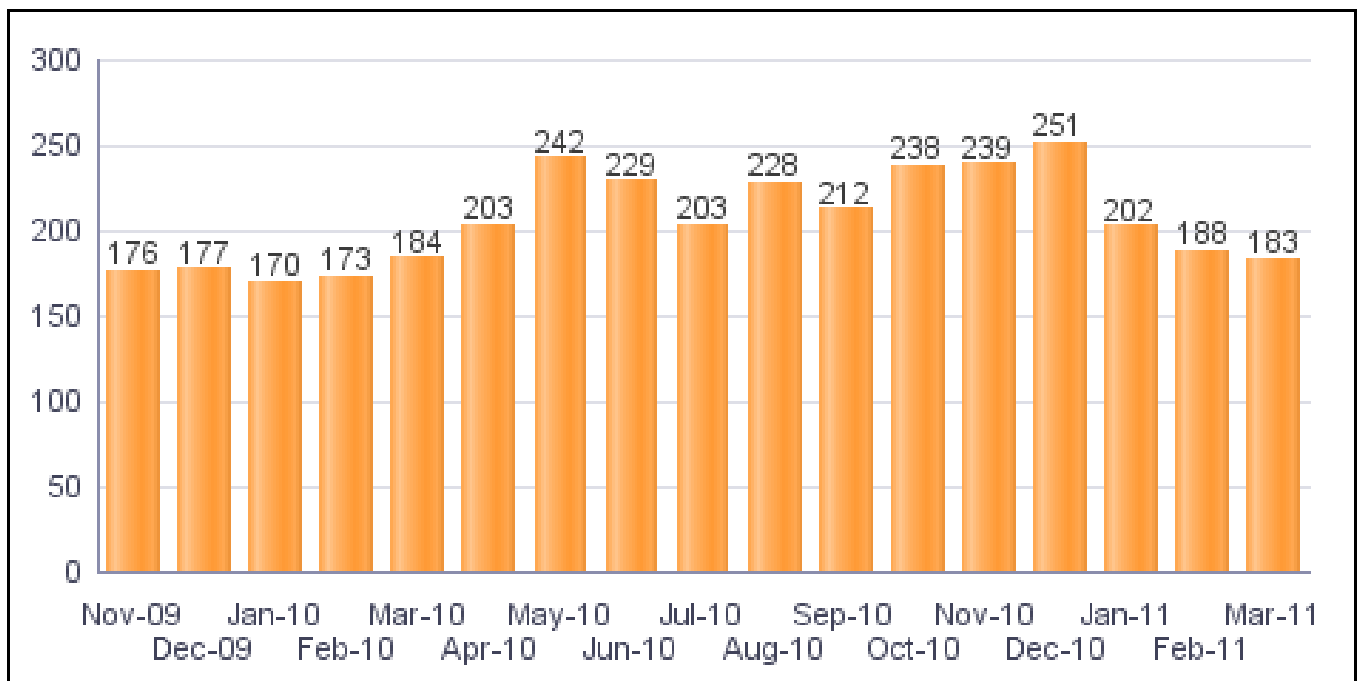
Source: Maryland Department of Public Safety and Correctional Services (DPCS)
Data Extracted: 4/25/2011
Map Created: April 2011



CARFTF Open VPI Warrants, November 2009 – March 2011



Statewide Open VPI Warrants, November 2009 – March 2011

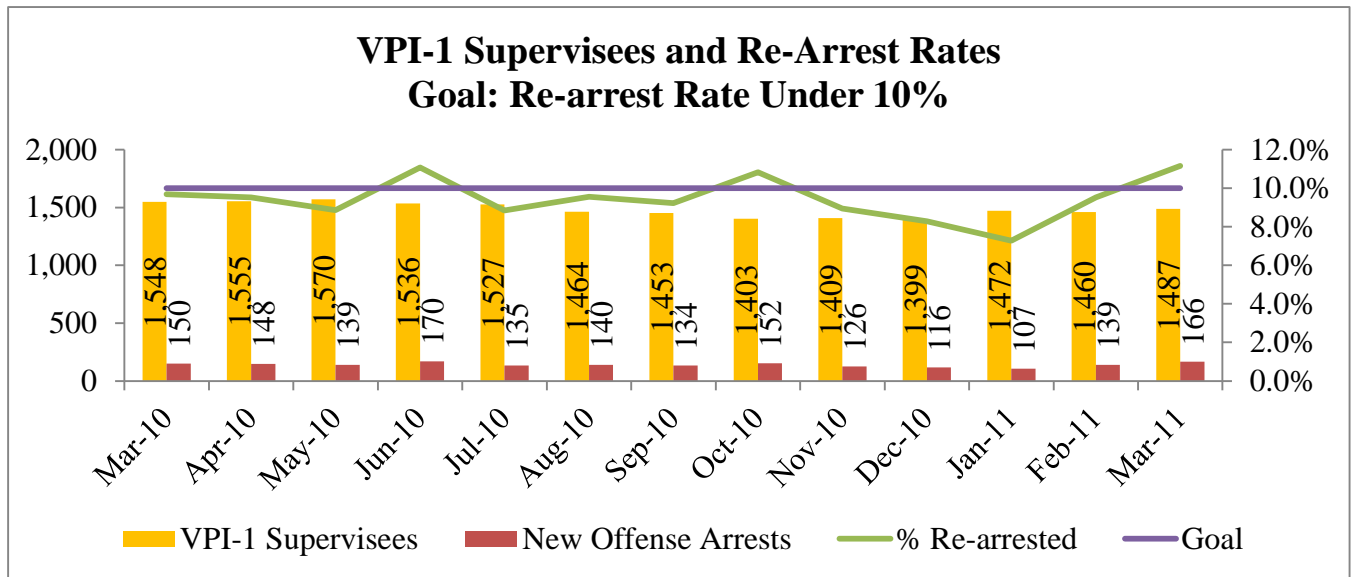


- **Warrants.now strategy.** As the Prince George's County match shows, warrants.now can potentially identify a large number of additional open warrants for DPP to pursue. In addition, while

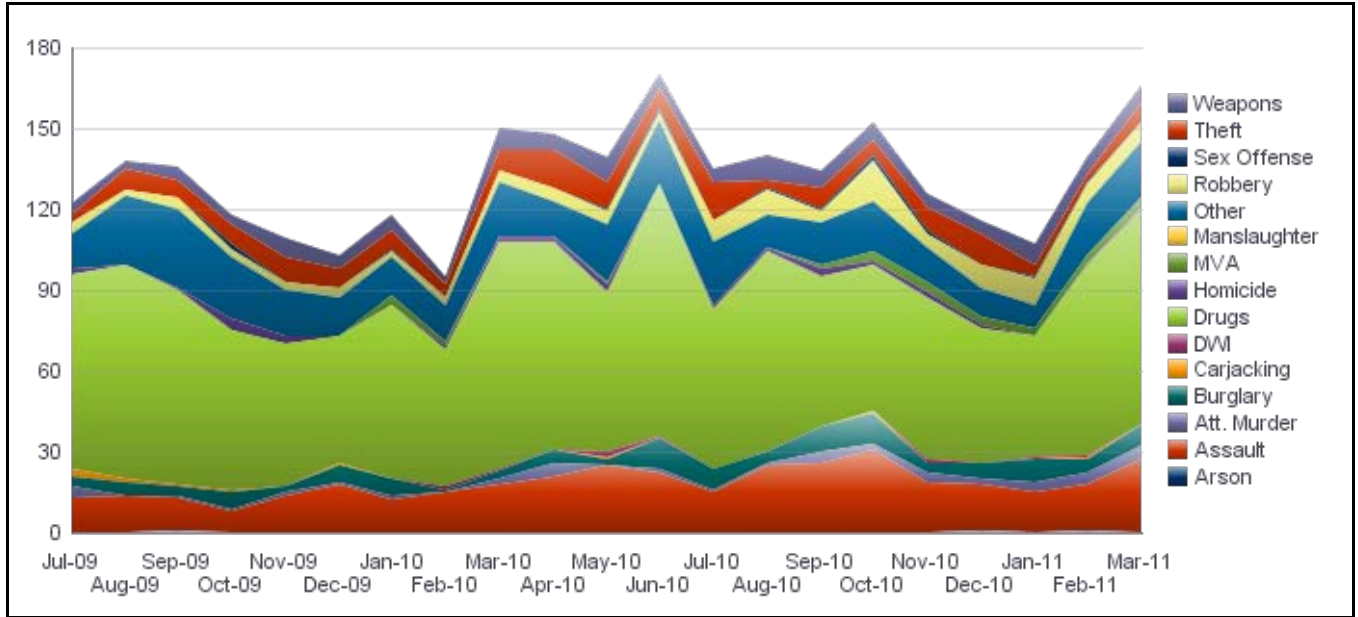
agents must still receive a paper copy of the warrant, the system will now notify agents as soon as a warrant is issued for a supervisee, increasing the speed that agents can begin working on warrants.

Violence Prevention Initiative

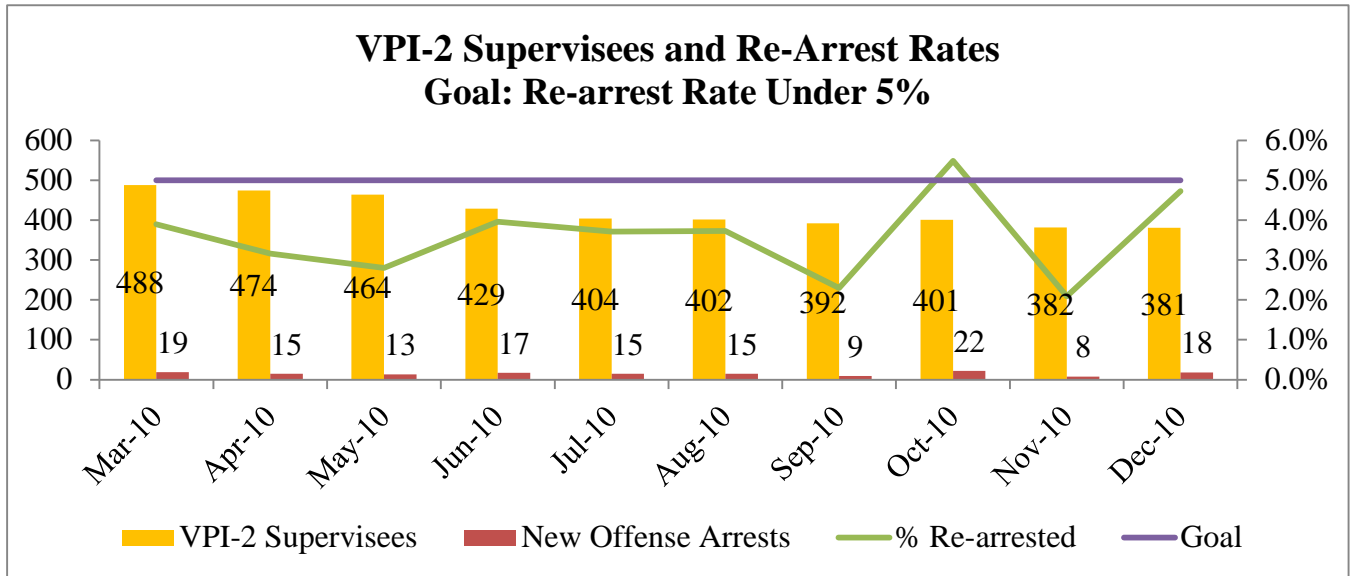
- VPI-1.** The overall number of VPI-1 supervisees increased 2 percent in February, indicating that the overall VPI-1 population continues to increase slightly since a low of 1,399 supervisees in December. However, after regularly posting re-arrest rates below the 10 percent target, re-arrest rates increased to 11.2 percent in March. The increase was largely driven by increases in assaults and weapons arrests among VPI-1 supervisees.



VPI-1 Re-arrests by Charge, FY 2010 - Present

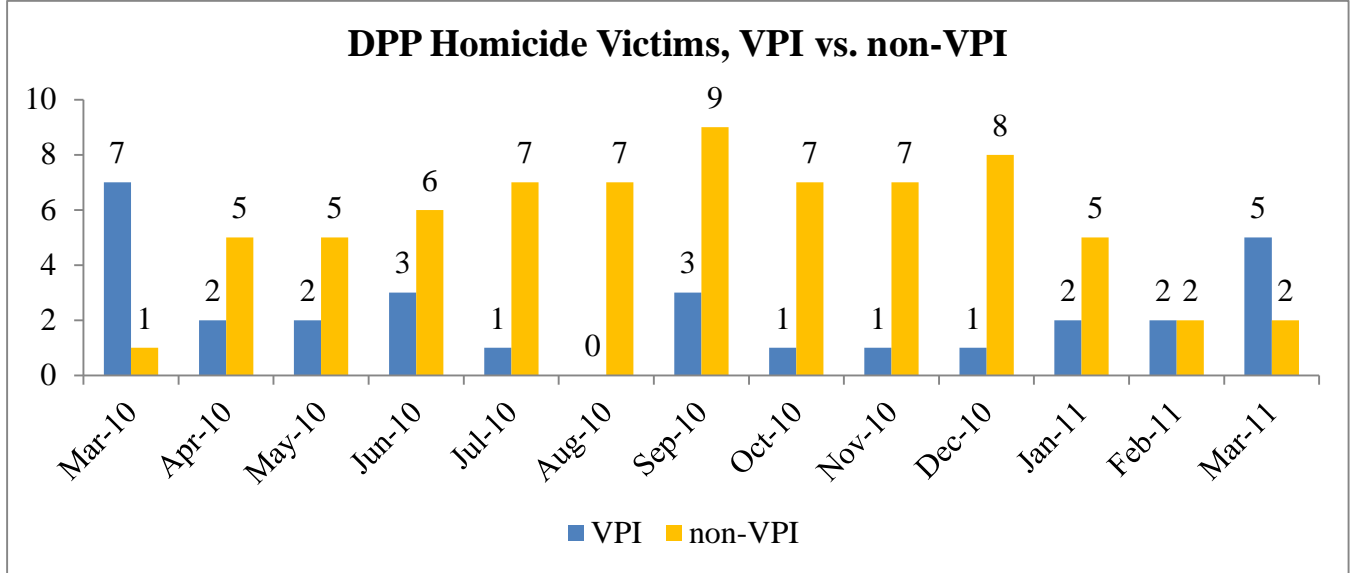


- VPI-2.** The overall number of VPI-2 supervisees remained relatively constant, with an decreasing trend over the last thirteen months. Furthermore, while the re-arrest rate did increase slightly, the overall rate remains below the 5 percent goal and there were no particular drivers in the increase.

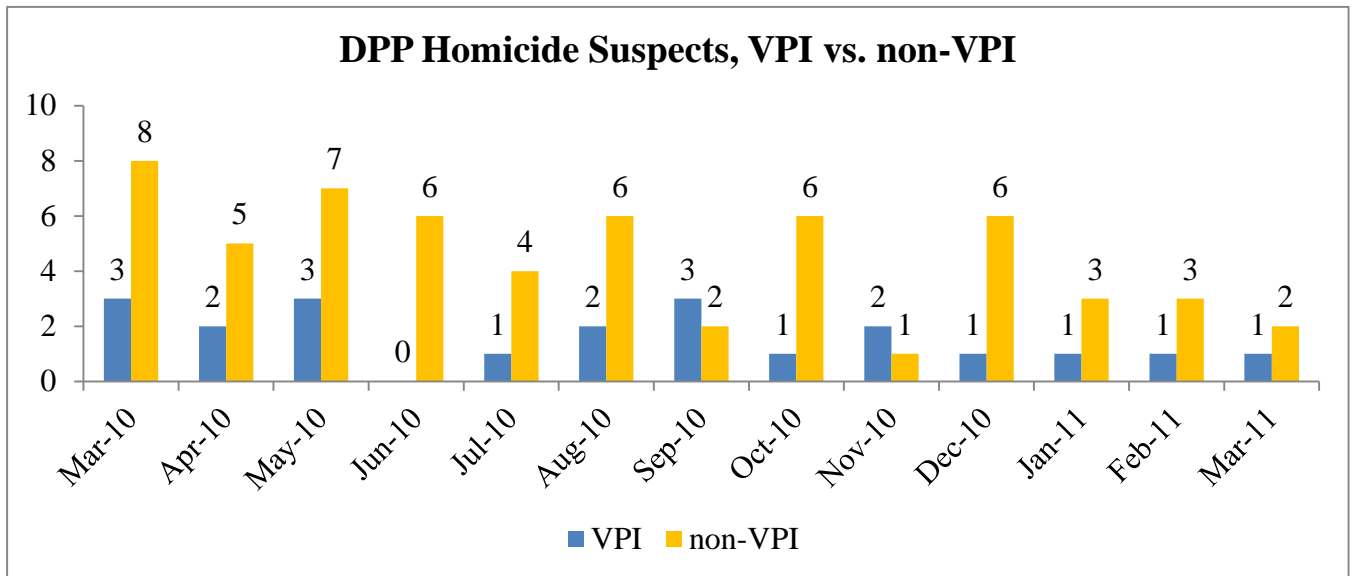


Homicides

- Statewide VPI Homicide Victims.** Over the last thirteen months, data indicates that VPI has generally seen fewer homicide victims when compared with non-VPI homicide victims. However, March 2011 is the first month since March 2010 that there were more VPI victims than non-VPI victims. Similarly, over the same period, the total number of DPP supervisees who became homicide victims increased.

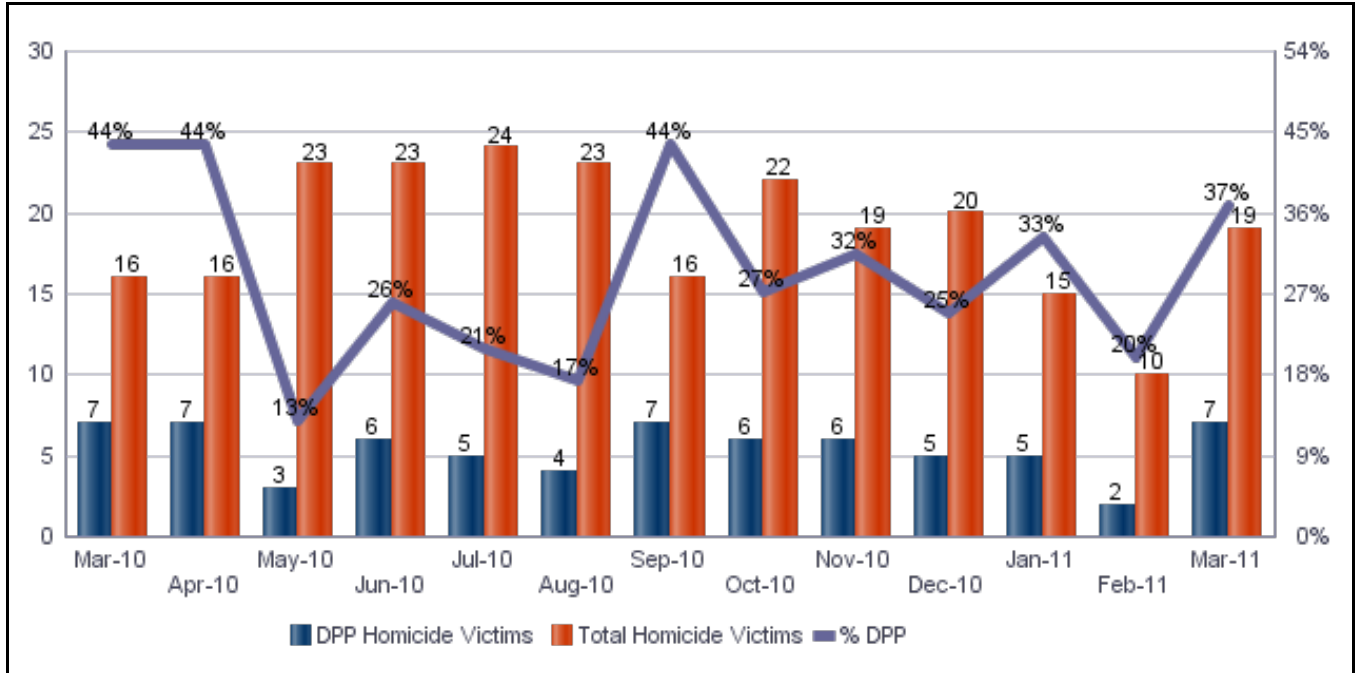


- Statewide VPI Homicide Suspects.** Despite the increase in VPI homicide victims, the total number of VPI homicide suspects remained low. In addition, the overall number of DPP homicide suspects decreased. This suggests that VPI homicide victimization may be due to factors other than VPI involvement in recent violence increases, especially in Baltimore City.

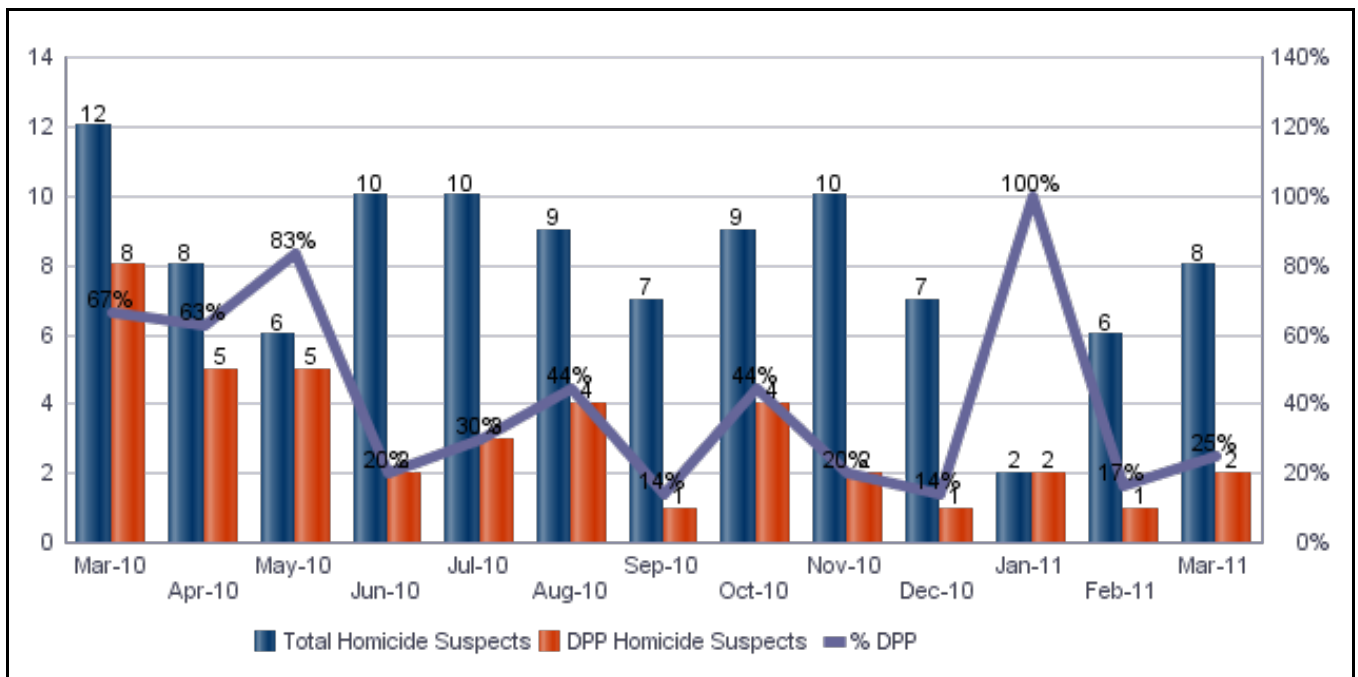


- Baltimore City DPP Homicide Involvement.** As with Statewide figures, Baltimore City homicide involvement by DPP supervisees increased for victims but decreased for suspects.

DPP Homicide Victims, Baltimore City



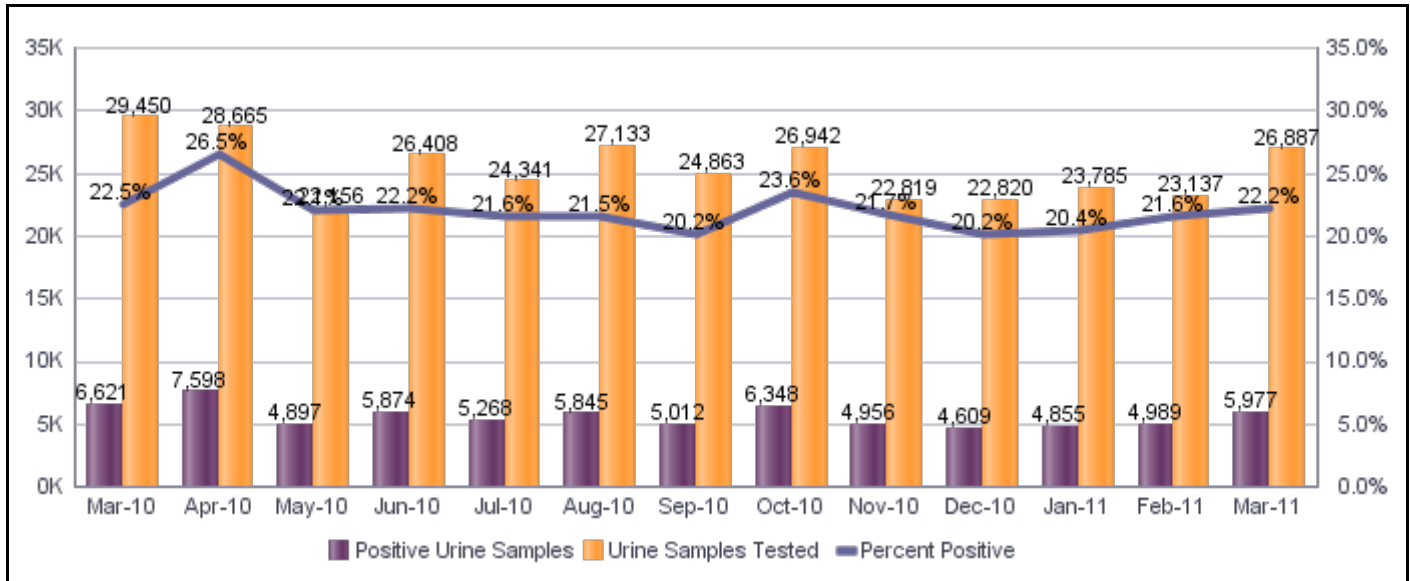
DPP Homicide Suspects, Baltimore City



Drug Testing

- Positive Drug Tests.** In March, the percentage of positive tests rose slightly to 22 percent, continuing a gradual increase over the last four months.

Drug Testing and Positive Drug Tests, March 2010 – March 2011



- Drug Testing Requirements.** DPP indicated that of 66,423 supervisees, 29,181 (43 percent) have a drug testing requirement as part of supervision. In addition, 10,987 Drunk Driver Monitoring Program (DDMP) participants have a drug testing requirement, which is 75 percent of all DDMP participants. As not all participants receive a drug test each month, this data should not be compared to the number of samples tested in March 2011.

Drug Treatment

- City Drug Treatment Assessments.** The Department provided data to StateStat regarding the number of drug treatment assessments performed in Baltimore City for incoming VPI supervisees. Overall, 35 percent of VPI intakes received an addictions assessment.

Addiction Assessments Performed, CY 2011 YTD, Baltimore City VPI				
	Jan-11	Feb-11	Mar-11	Total
Addiction Assessments Performed	39	32	48	119
Total VPI Intakes	102	119	123	344
% Assessed	38%	27%	39%	35%

Re-entry Services

- Overview.** At a recent DOC Stat, the panel and DOC engaged in a lengthy discussion of how the Department works with inmates to prepare them for their release into the community, especially when the inmate will be supervised by DPP after release for parole and mandatory release cases. Several issues were identified, including how the DOC and DPP ensure that inmates connect with

DPP for supervision, efforts to connect the supervisee to drug and mental health treatment, continuation of medical services, and employment. While focused on re-entry from prison, several of these issues also apply to individuals placed directly under supervision by the court. These issues are outlined for discussion below.

- **Connection to DPP.** The first issue is connecting inmates to DPP to ensure that they seamlessly enter supervision. DOC indicated that it works with DPP to set up an appointment for intake at DPP, which is reviewed with the inmate at the time of release. DOC also indicated that in some instances, DPP performs a pre-release investigation to ensure that the offender will be living at a valid address and reviews other issues surrounding the inmate's release.

The Department noted that case managers provide the appointment time to an inmate prior to release for DOC parole/mandatory releases; an appointment is given to the offender at sentencing for probation cases. In most cases, the individual has 24 hours to report to DPP intake.

- **Connection to Treatment.** As discussed above, there is a significant need to connect inmates to drug and mental health services after their release from the institution, either to continue treatment that began in the institution or to provide appropriate aftercare. DOC indicates that treatment information, including an aftercare form, is provided in the release packet; a copy of the aftercare form can be projected at the panel's request.
- **Connection to Employment.** As the panel is aware, DOC and the Department of Labor Licensing and Regulation (DLLR) have significantly expanded education and job training opportunities for inmates in an effort to better prepare them for employment upon release. However, it is currently unclear how DPP works to ensure that inmates are adequately connected to resources, such as DLLR's One Stop Centers, to ensure that these skills translate to employment.

The Department noted that it has difficulty tracking how many supervisees attend One-Stops. The panel and the Department discussed new strategies to track supervisee use of One Stop services.

- **MVA ID.** As the panel is aware, DOC currently works with the Motor Vehicle Administration (MVA) to provide inmates approaching release with a valid MVA ID, which assists in the inmate finding employment. Inmates can also receive a free MVA ID up to 60 days after release, and some efforts have been made by both DOC and DPP to educate inmates about this opportunity.