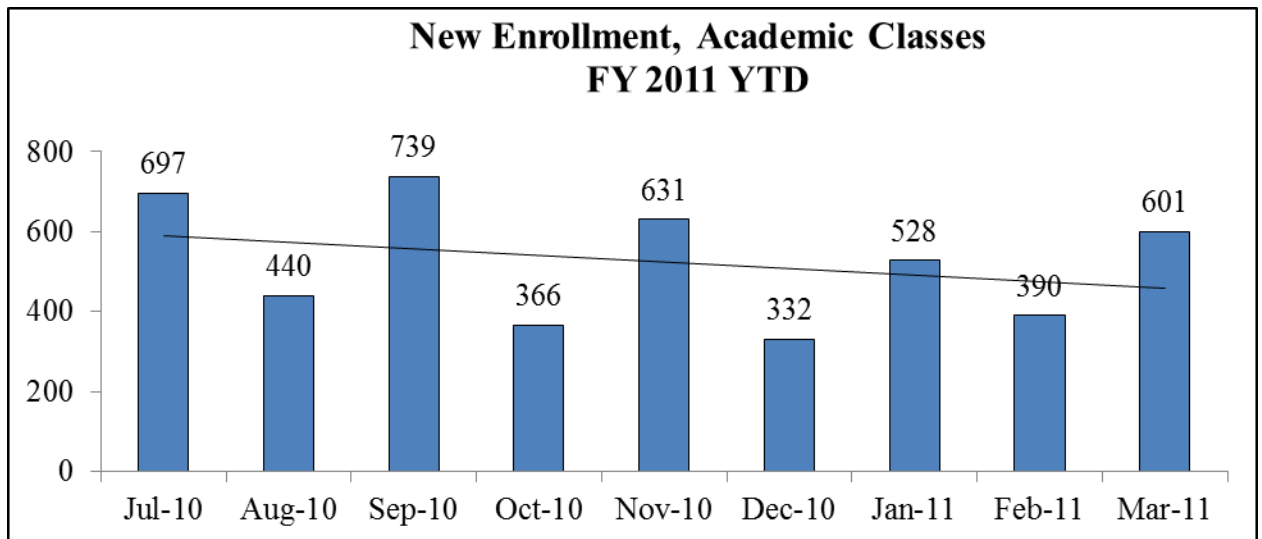


**Agency:** Department of Corrections and Department of Labor, Licensing and Regulation

Following is a summary of issues discussed at the DOC and DLLR Stat, held on June 2, 2011. Analysis is provided by StateStat.

### **Correctional Education**

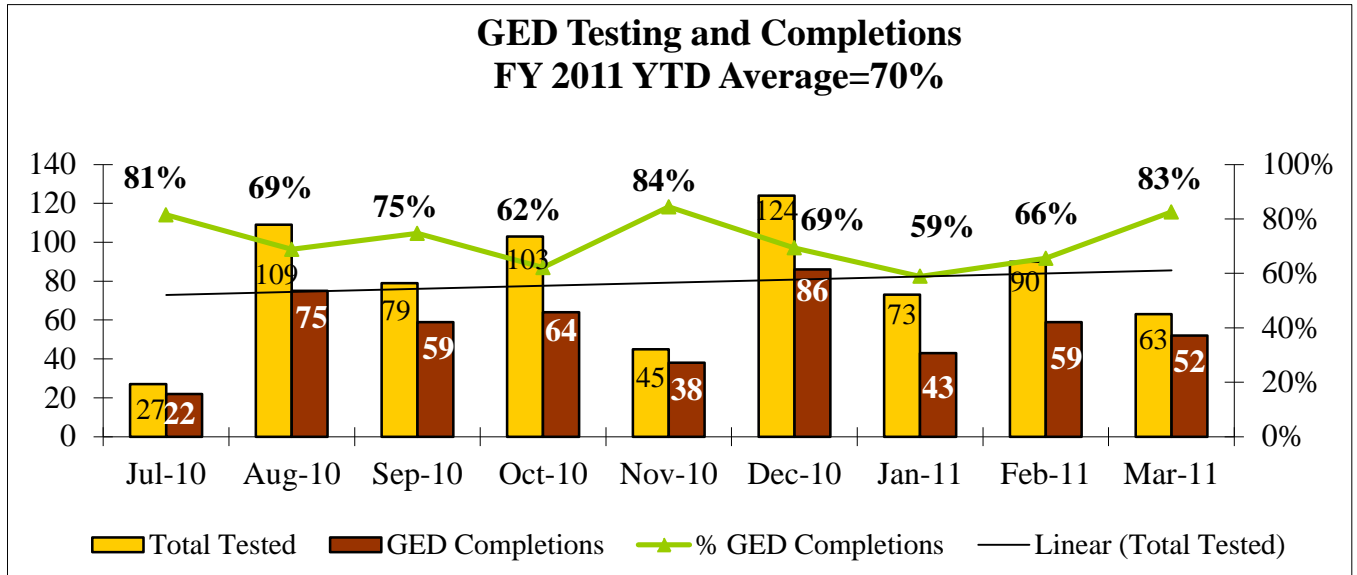
- **One-Stops (follow-up item).** DLLR reported that the Employment Readiness and Workforce Development (ERW) instructors recommend that students visit One Stops, and provide information about the One Stops to their students. Additionally, DLLR and DOC have supported the Baltimore City Mayor’s Office of Employment Development’s Reentry Center (REC) since 2006 by providing funding for two Career Development Facilitators (CDFs) and two other employees. The CDFs travel to DOC prison sites to begin the education and referral process with soon-to-be-released inmates. Approximately 2,900 inmates are served annually by this partnership.
- **Academic Enrollment.** In aggregate, the percent of students enrolled in academic classes increased from 90 percent to 92 percent in March, and the number of open seats decreased. During the previous Correctional Education discussion the agency reported requesting that principals submit requests for students earlier, to reduce the number of open seats at the end of the month.
  - The agency responded that if the pattern increases in April and May, it can likely be attributed to this initiative.
  - The agency also mentioned that the increase could be attributed to the jump in new enrollments in March 2011.



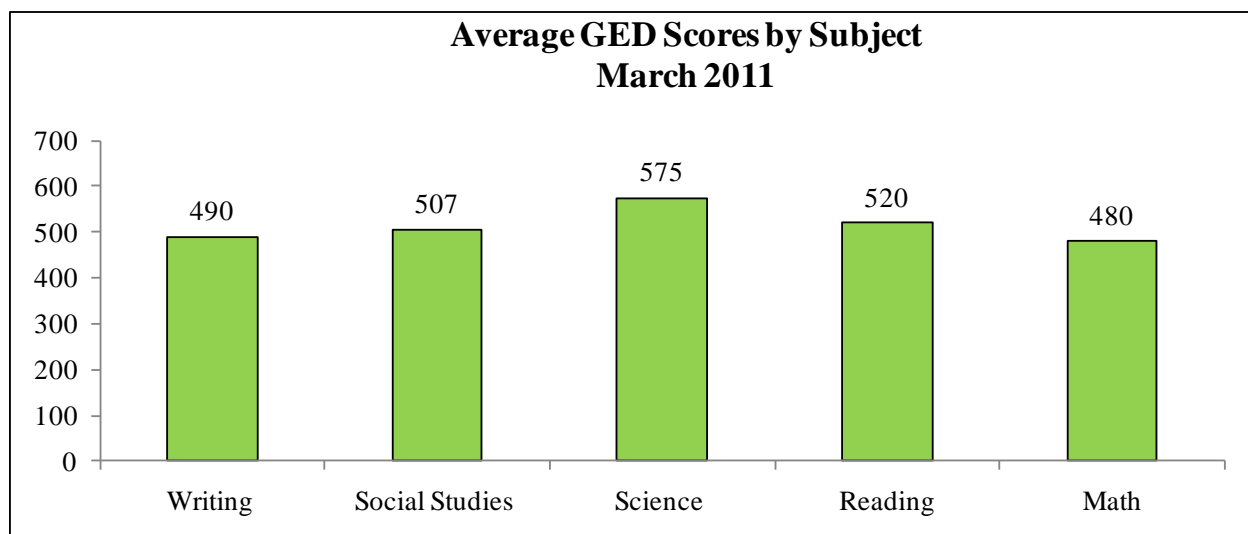
- **GED Testing and Completions.** One student at Popular Hill Pre-Release Unit scored 3080 on the GED test, the highest score since December 2010 when a student at Western Correctional Institute achieved the same score. In aggregate, GED completions increased to 83 percent in

March 2011, the second highest month of completions in this fiscal year. Further, the number of students tested has trended upward throughout the fiscal year.

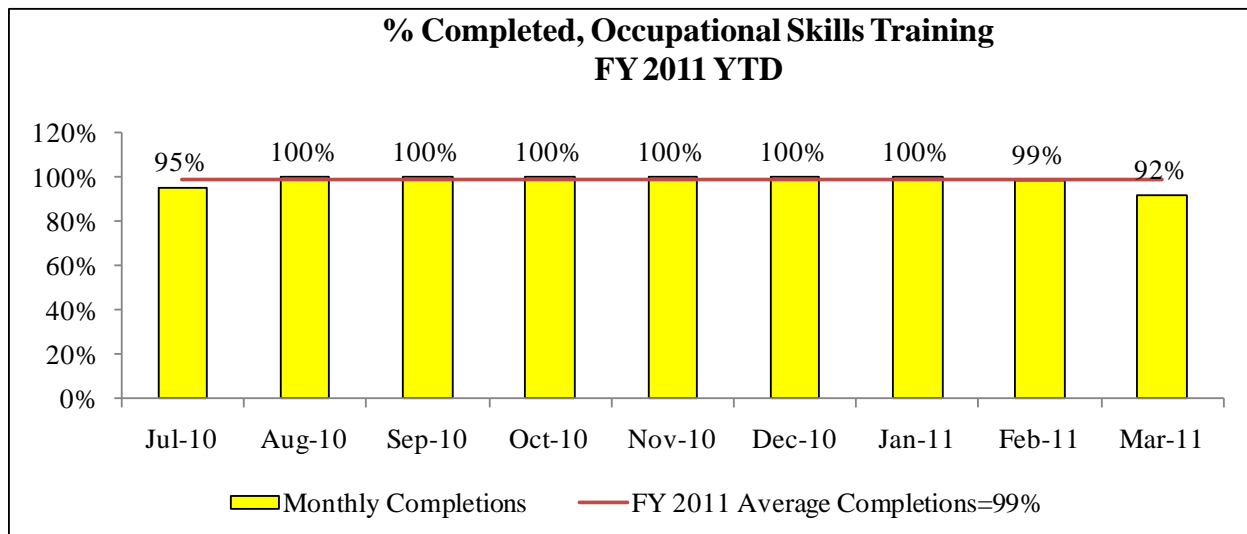
- The agency responded that if GED completion rates continued to be high, the Deputy Secretary would examine the Practice Tests to ensure that everyone who was qualified was allowed to take the test.



- **GED Subject Areas.** At the previous Correctional Education meeting, DLLR shared its “Best Practices in Math Instruction” guide, which was disseminated to all instructors. The booklet emphasizes contextualizing lesson plans in order to motivate students and allow them to relate to the content. For example, the booklet suggests focusing on preparation for apprenticeships and training programs available through DLLR, and relating every skill to real life/work. Despite this new resource, on average Math scores continued to be the lowest in March, followed closely by Writing.
  - The agency responded that Math and Writing are challenges for all students, not just those in the correctional education system. Teachers are encouraged to use contextualized lesson plans.

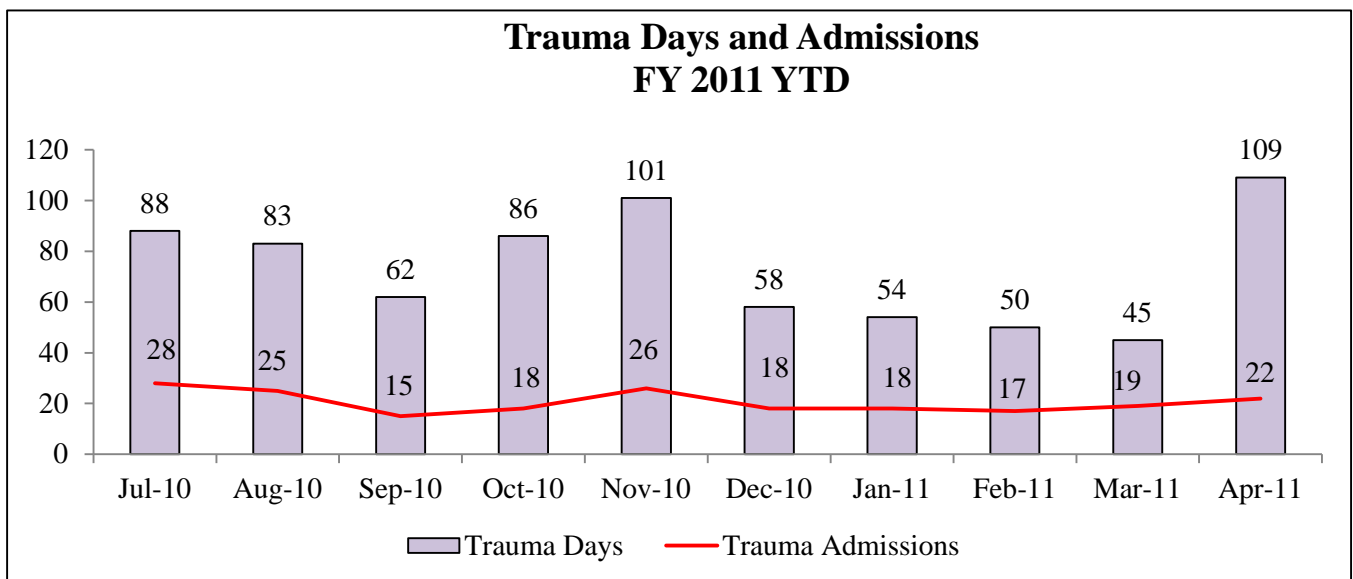


- **Occupational Skills Training.** The percent of completions in Occupational Skills Training classes is generally high, but in March it dipped below the fiscal year average of 99 percent.
  - The agency responded that many students who are in the occupation skills training program are interested and skilled, which helps them to succeed.



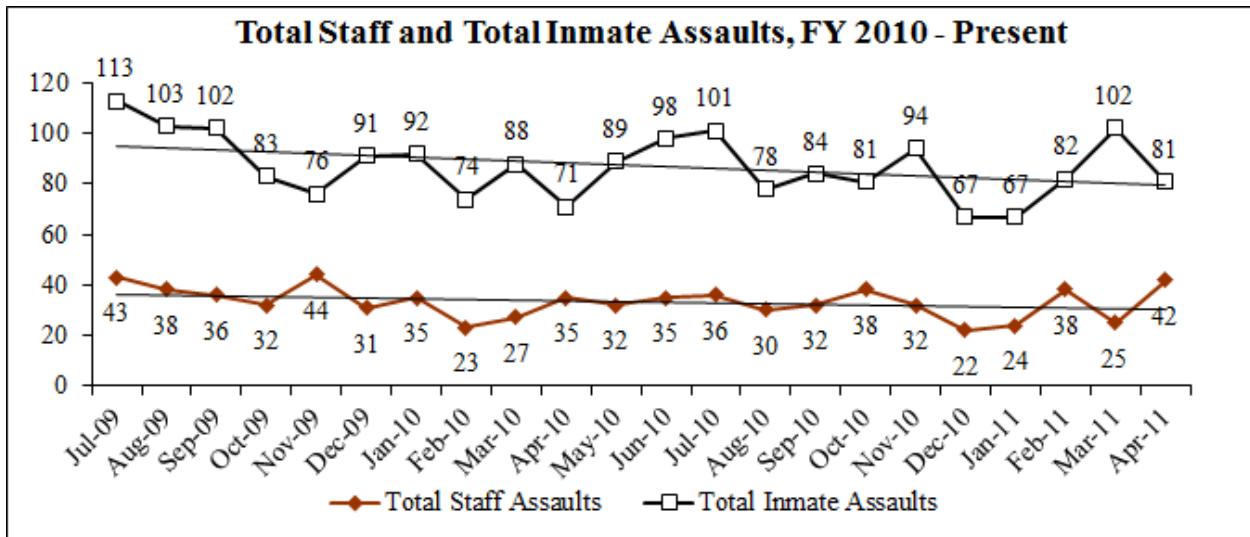
**Office of Treatment Services**

- **NextGen (follow up).** DOC will be meeting next week with Maryland Health Care Commission (MHCC) to discuss connecting DOC’s NextGen system to the state Health Information Exchange.
- **Treatment Days.** As mentioned by the agency, ICU/CCU days and cardiac days decreased in April 2011. However, trauma days spiked to 109 in April, well above the FY 2011 YTD average of 74. Trauma admissions increased in April as well. The majority of the trauma days (56) were at the Jail SDA, which corresponded with the concentration of trauma admissions in the Jail SDA.
  - The agency responded that the increase is due in part to “bedside commits,” in which an individual is injured and then arrested.



## Homicides and Assaults

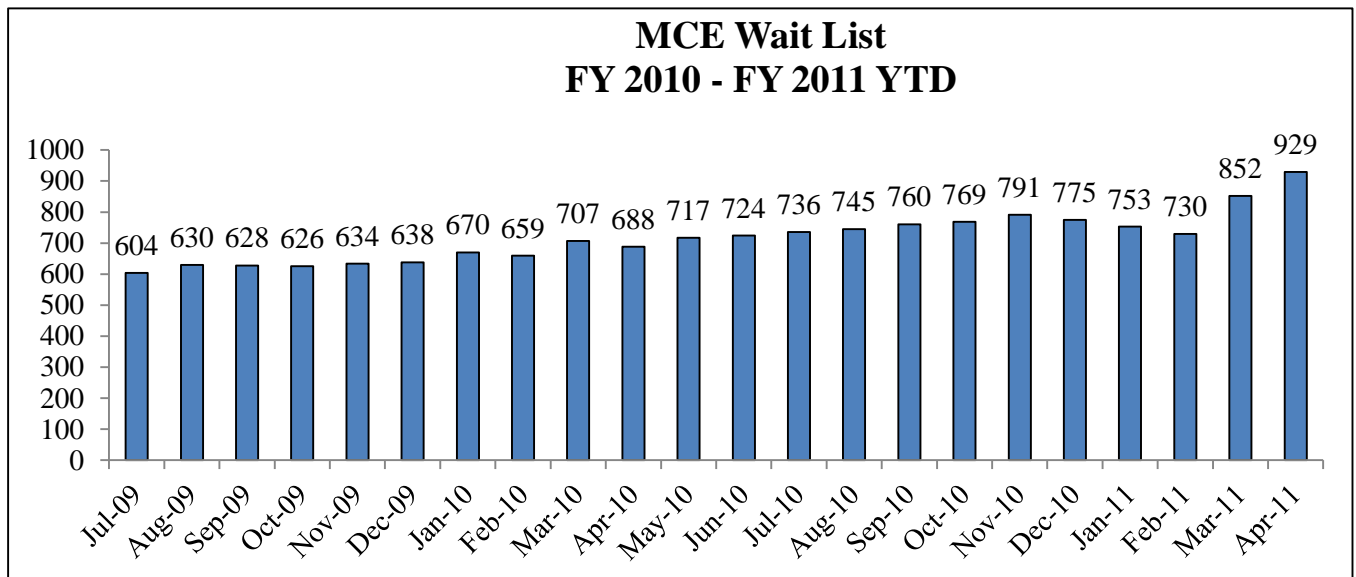
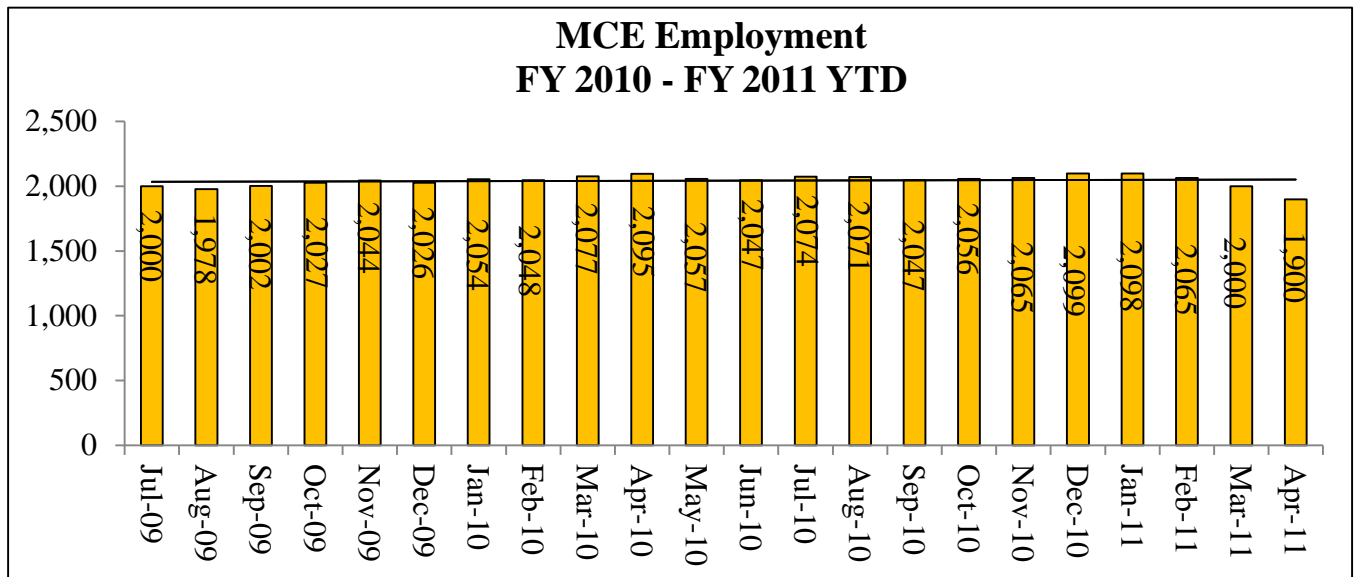
- **Inmate Homicides.** Two homicides were reported in February 2011.
  - The agency responded that these homicides were investigated, and that the agency monitors living situations to ensure that cell mates are compatible.
- **Increase in Assaults.** Of the 81 assaults on inmates reported in April, two were sexual assaults.
  - The agency responded that all claims of sexual assault are fully investigated.



## Maryland Correctional Enterprises

(GDU Goal IV)

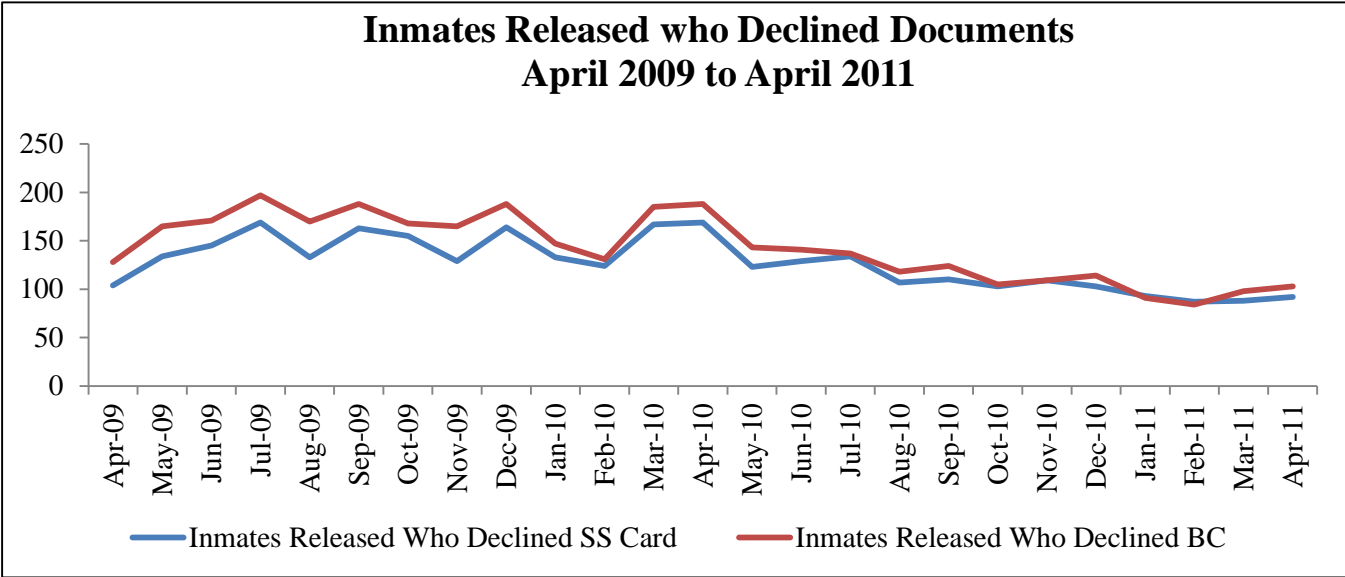
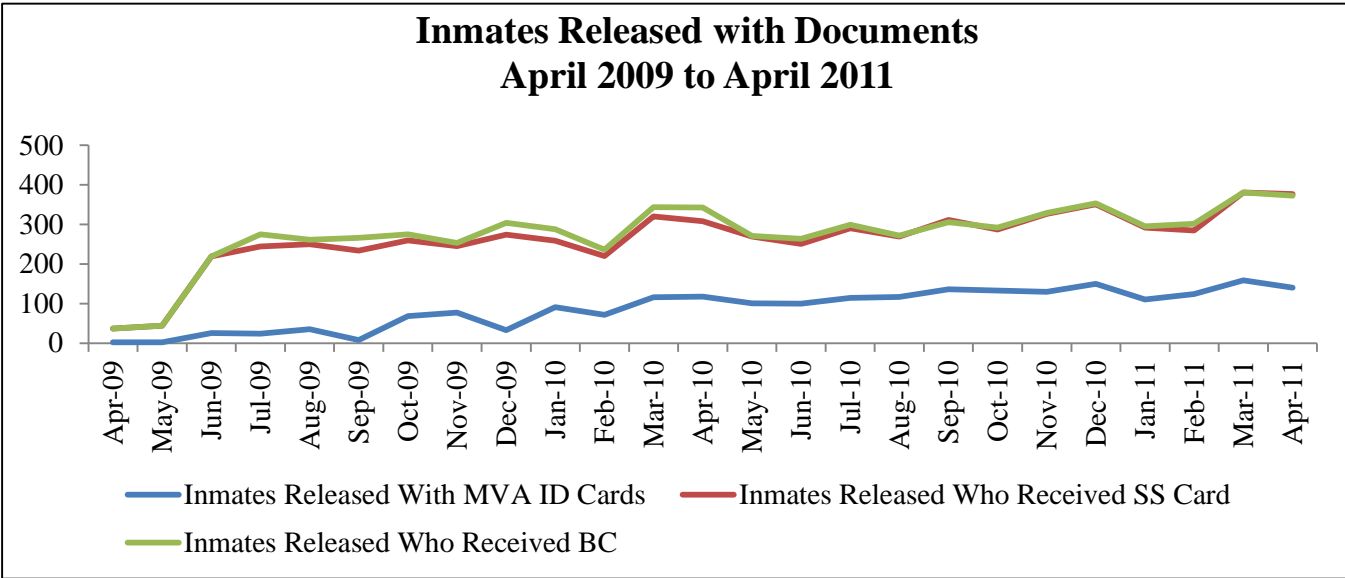
- **Contractual Positions and PINs.** MCE employment has been decreasing in recent months while the MCE wait list of eligible inmates continues to grow. The Department noted that MCE inmate employment is impacted most significantly by the reduction in MCE revenues resulting from the economic downturn. The loss of PINS is also a contributing factor toward decreased MCE inmate employment. MCE is concerned about the impact of losing PINS, but does not believe that the use of contract positions would effectively impact inmate employment, largely because of the regulatory requirements imposed on mandated positions.
  - The agency responded that they are acquiring positions for three employees, which will support about 60 inmates.



#### Inmate IDs

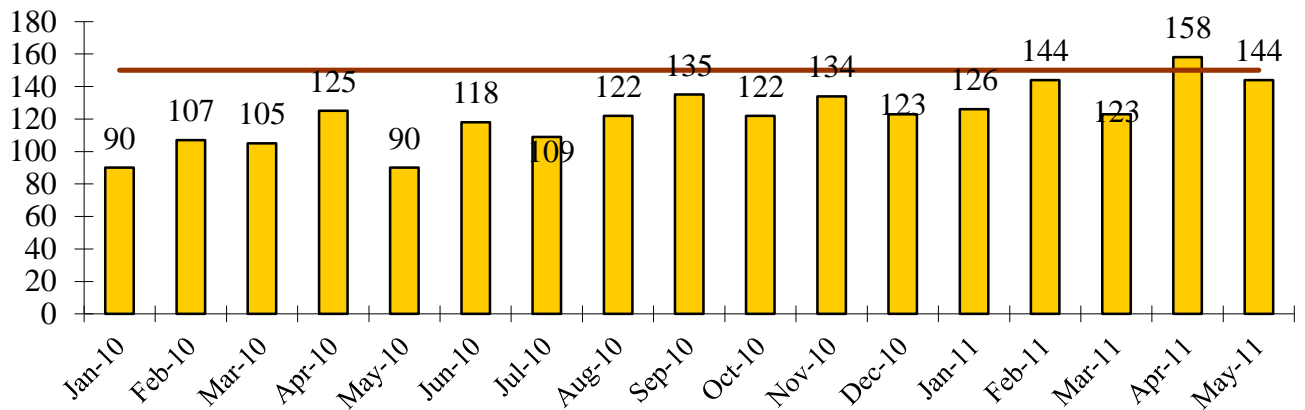
(GDU Goal 4 - Reduce Violent Crime in Maryland by 20% by the End of 2012)

- Declined MVA IDs (follow up item).** The agency reported that motivational interviewing techniques are used to attempt to convince the inmates to get their birth certificates and Social Security cards, as well as their MVA ID cards. As evidence of the effectiveness of the interview, DOC points to the increasing number of inmates released each month with documents since April 2009. During the same period, the number of inmates released each month that declined birth certificates and Social Security cards decreased. The agency maintains that while it does not track the number of inmates who decline getting MVA ID cards, the motivational interviewing techniques probably have a similar impact on decreasing the number of inmates who decline the MVA ID cards. The agency also reported that inmates do not reject MVA ID cards.



- MVA Bus IDs.** As part of the inmate ID program, the MVA sends mobile bus units to three DOC facilities each month to process IDs for inmates; 50 inmates can be processed per site per visit, for a total capacity of 150 IDs per month. In April there were 158 inmate IDs processed at the mobile bus, the first time that the agency has reported reaching capacity.

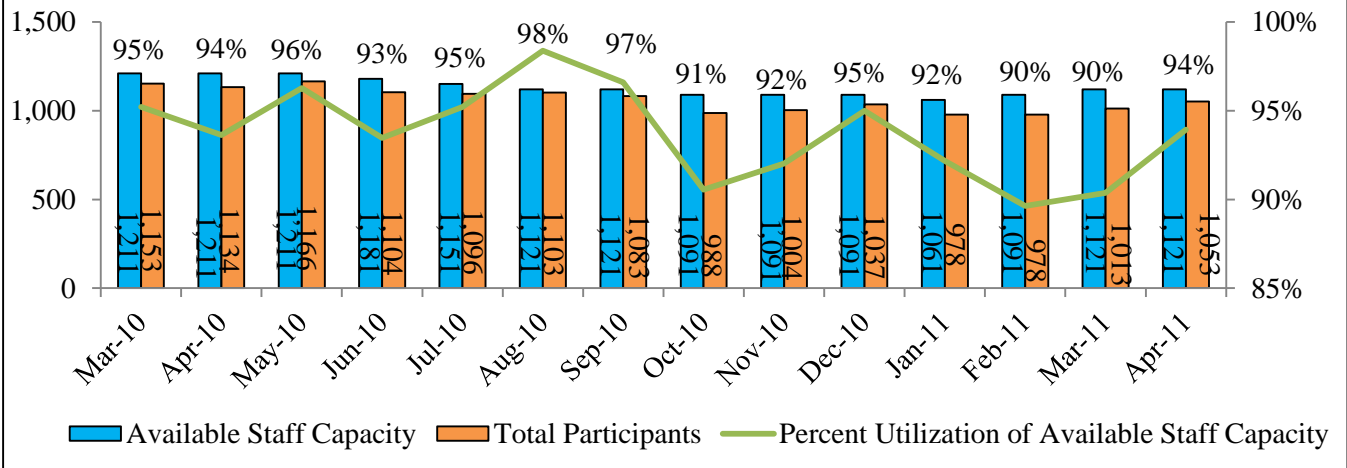
### Inmate IDS Processed at Mobile Bus and Total Bus Capacity, January 2010 - May 2011



### Substance Abuse

- Capacity and Utilization.** The panel will recall the previous discussion of two issues affecting the decline in capacity and utilization, staff vacancies and inmate discharges. In April 2011, the available staff capacity remained steady and the number of total participants increased, causing utilization to increase to 94 percent, the highest level since December 2010. This is because two more positions have been filled, which will increase staff capacity.

### Substance Abuse Treatment Capacity and Utilization March 2010 to April 2011



- Discharges and Completions.** The number of substance abuse completions fell below the FY 2011 YTD average in April 2011. Meanwhile, 38 individuals were discharged in April before completing.
  - The agency suggested that the fluctuations could be because the substance abuse programs run on six month cycles.

### Substance Abuse Discharges and Completions FY 2011 YTD

