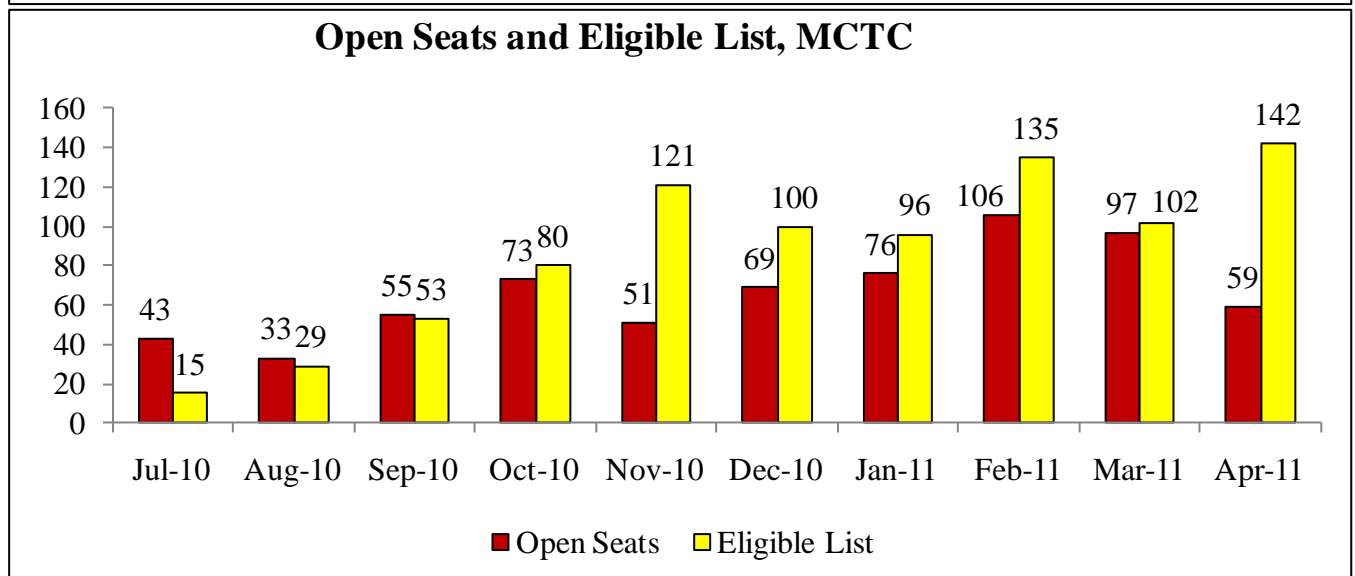
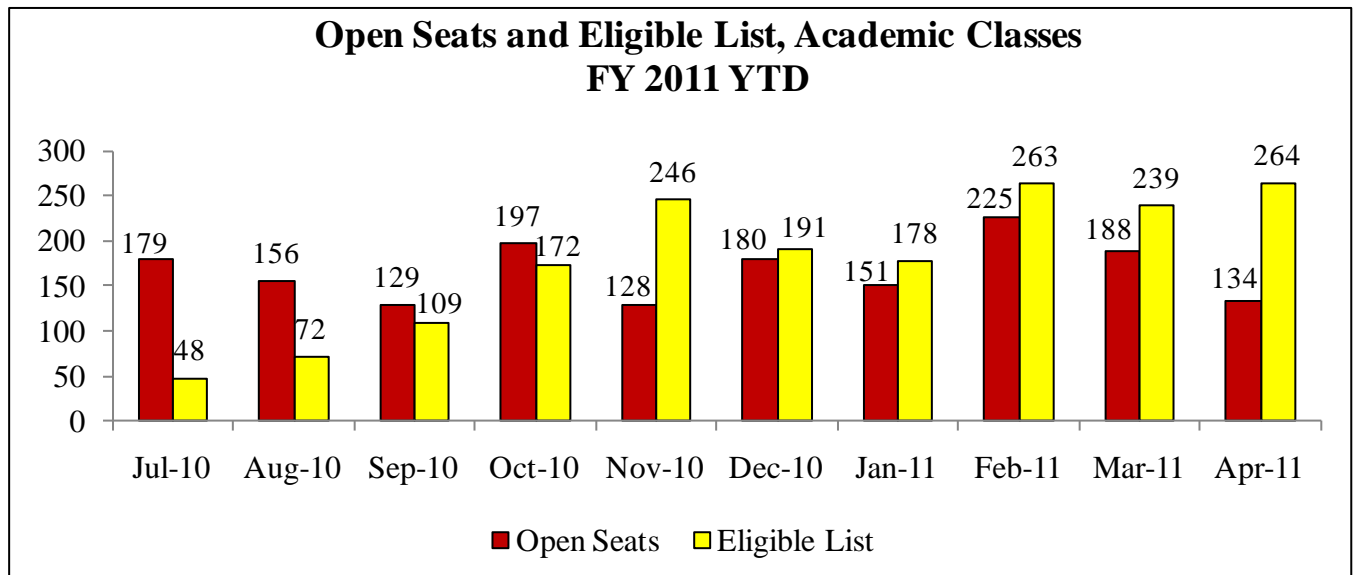


Meeting Summary

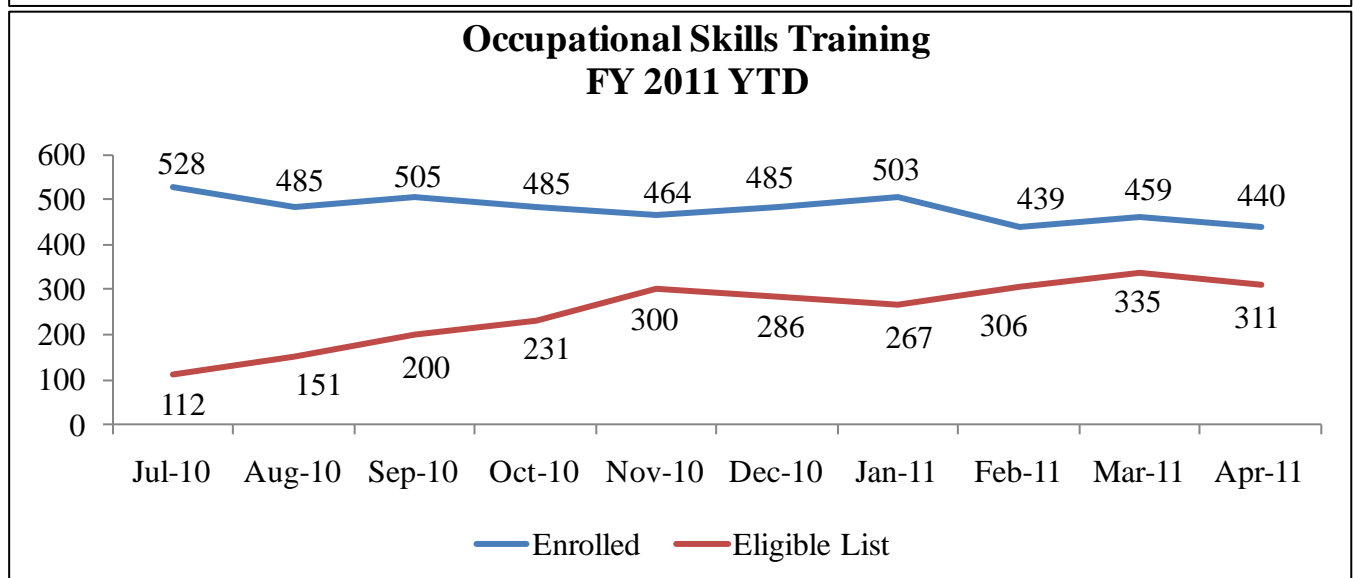
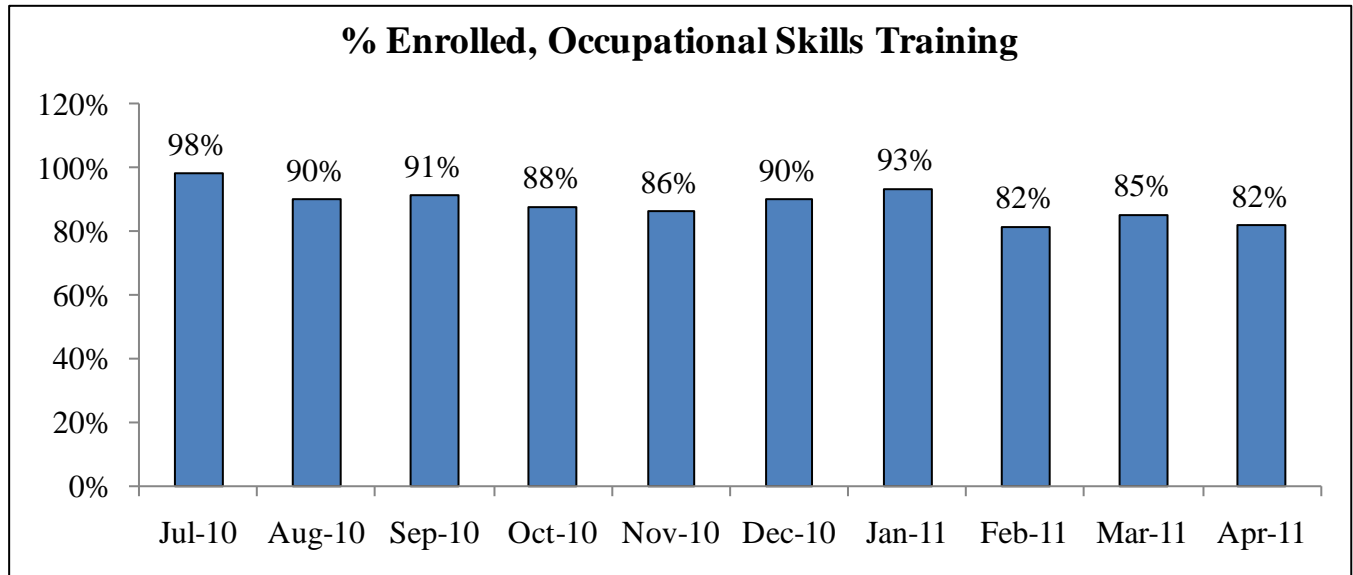
Following is a summary of issues discussed at the DOC and DLLR Stat, held on June 30, 2011. Analysis is provided by StateStat.

Correctional Education

- **Open Seats and Eligible List.** In April, the aggregate number of open seats in academic classes dropped to the lowest level of FY 2011 YTD since November. Maryland Correctional Training Center (MCTC) accounted for almost half (44 percent) of the open seats in April, with 142 inmates on its eligible list. The template notes that there are two academic teacher vacancies at MCTC. Meanwhile, the aggregate eligible list increased in April.
 - DLLR responded that it hired two teachers, which will allow MCTC to serve more students.



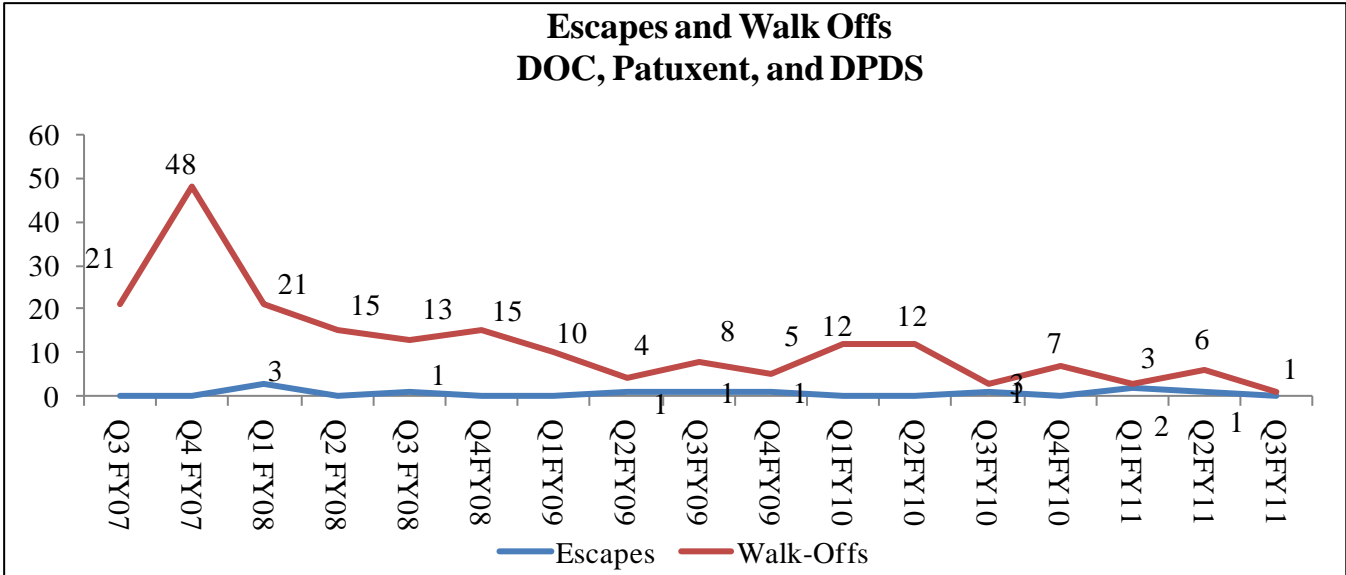
- **Occupational Skills Training.** Enrollment in Occupational Skills Training classes has been decreasing since the beginning of FY 2011 YTD, while the number of individuals on the eligible list has been increasing.
 - DLLR responded that OSTC is not filled to capacity, and that staff is working to fill seats. Commissioner Stouffer also responded that he would help seats through his case management staff.



Safety

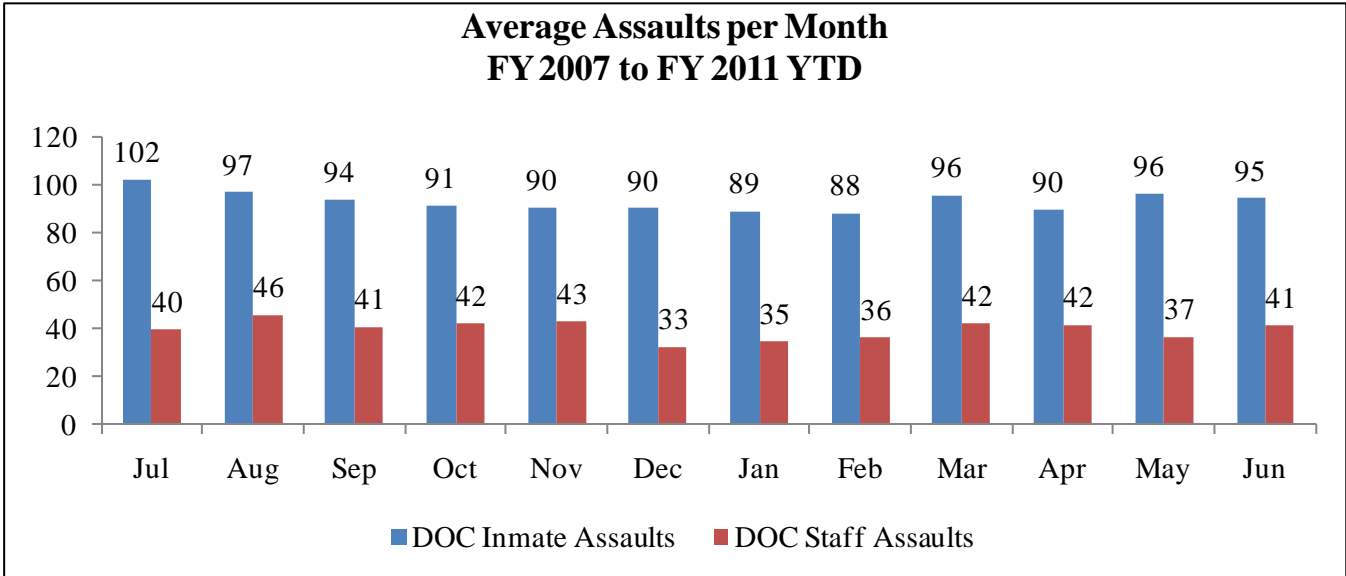
- **Walk Offs/Escapes.** DPSCS press releases have mentioned several walk offs in June. Research shows that escapes, walk offs and assaults increase in hot weather. However, the quarterly data does not seem to support such a pattern for walk-offs and assaults.
 - DOC responded that inmates are monitored when they receive bad news from home, or when another trigger may result in a walk-off. DOC agreed to provide StateStat with case reviews of the walk-offs that have occurred this quarter.

Escapes and Walk Offs DOC, Patuxent, and DPDS

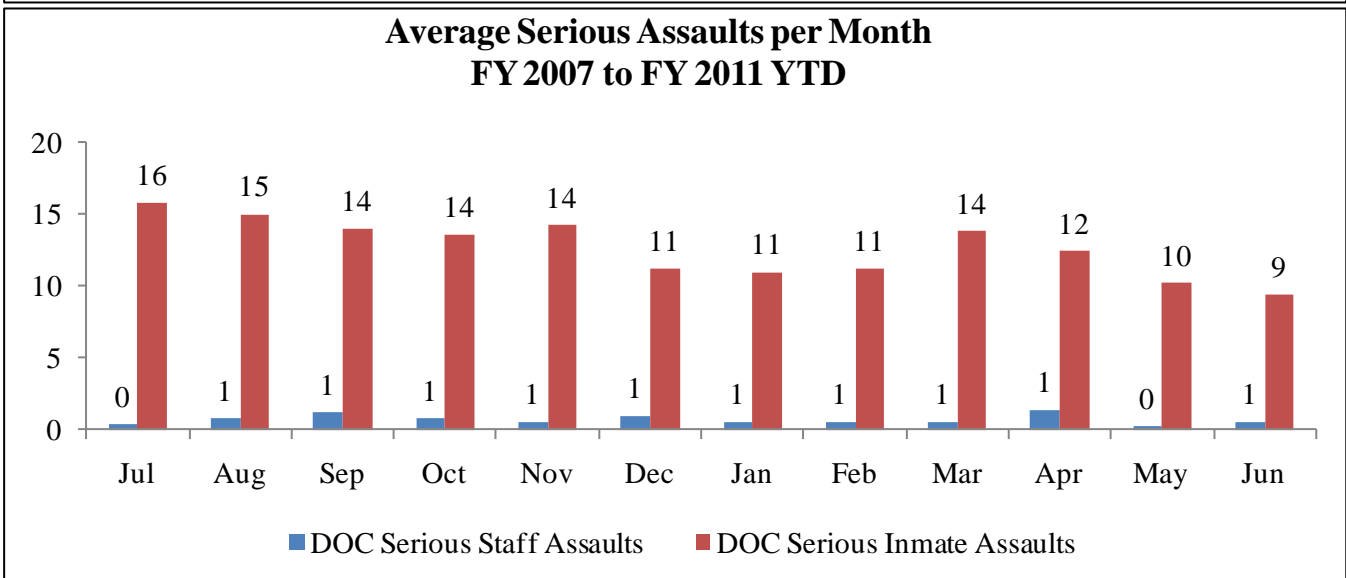


- Assaults.** Examining average assault data by month reveals that from FY 2007 to FY 2011 YTD (through May), most assaults and serious assaults occur in July. Assaults and serious assaults appear to taper off in the winter months.

Average Assaults per Month FY 2007 to FY 2011 YTD



Average Serious Assaults per Month FY 2007 to FY 2011 YTD



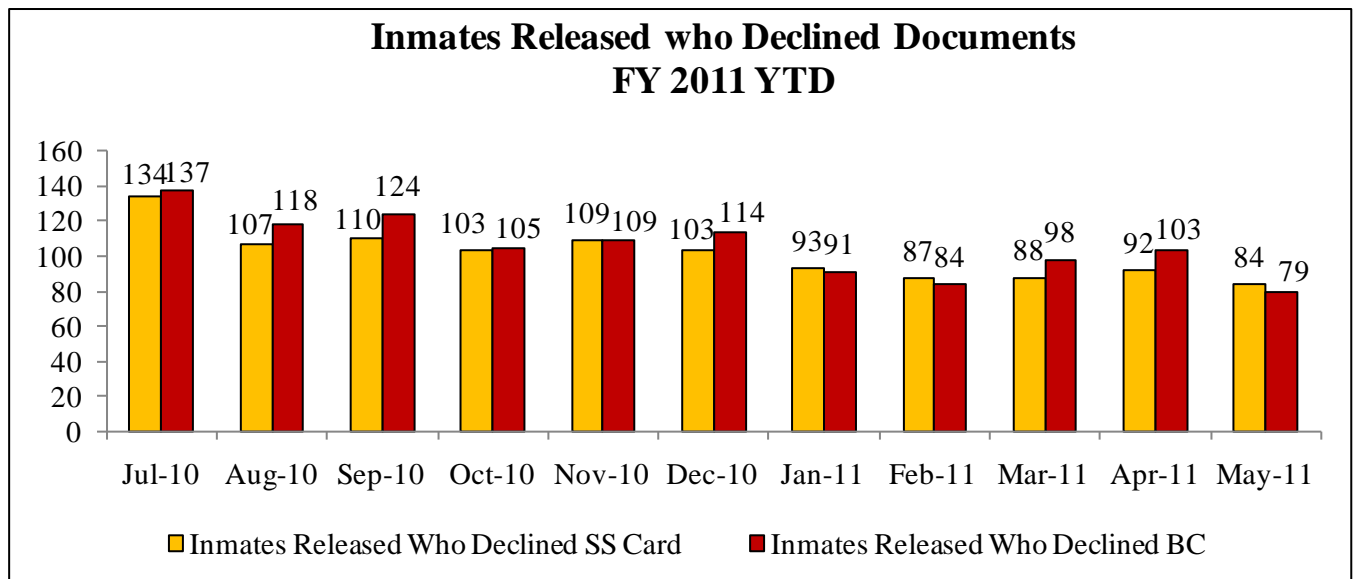
Inmate IDs

(GDU Goal 4 - Reduce Violent Crime in Maryland by 20% by the End of 2012)

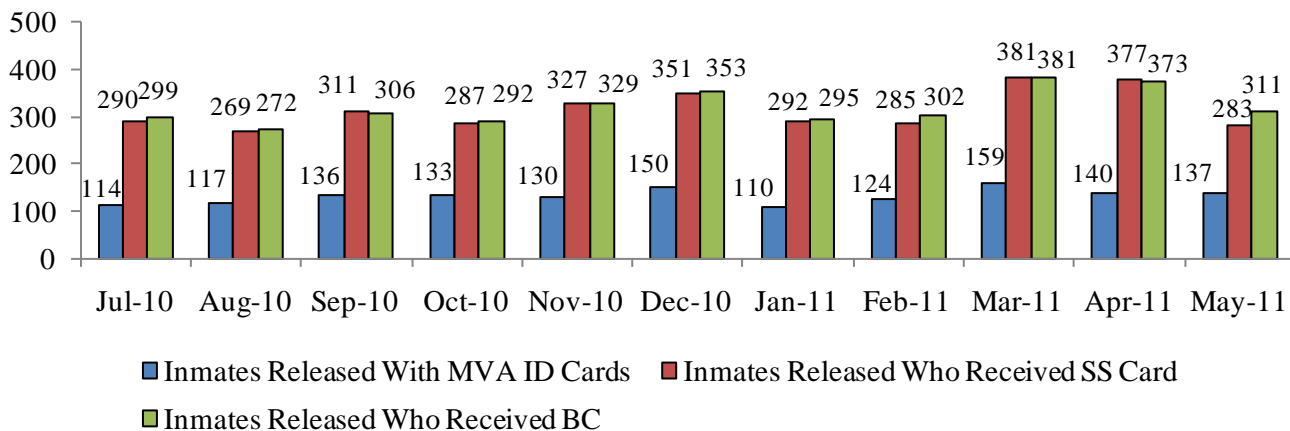
- **MVA ID Cards.** The Department set the following targets for 2012. The targets leave room for those offenders who do not want a form of ID, or who may have an ID:
 - 80% of offenders released should receive a State ID card (MVA/ DOC) at the time of release;
 - 80% of offenders released should be released with a birth certificate; and
 - 80% of offenders released should be released with a social security card.
- Progress toward reaching those goals is shown in the charts below.

Inmate ID Cards		
Document Inmates Released With	# Of Inmates- FYTD (May)	% Of Inmates-(of 5,617 total released FYTD)
MVA ID CARDS	1,450	26%
DOC ID CARDS	3,411	61%
MVA and DOC ID Cards	4,861	87%
S.S. CARDS	3,453	61%
BIRTH CERTS	3,513	63%

- The number of inmates released who declined a birth certificate and/or social security card decreased in May 2011. However, the number of inmates released with documents also decreased.



Inmates Released with Documents FY 2011 YTD



- MVA Post-Release IDs.** If an inmate is released without an MVA ID, the hope is that an inmate will use his or her Social Security card and Birth Certificate to obtain an MVA ID after release. The number of inmates doing so has remained steady in recent months, as shown in the chart below.

MVA Post-Release IDs October 2008 to May 2011

