



Maryland Department of Juvenile Services
Treating • Supporting • Protecting



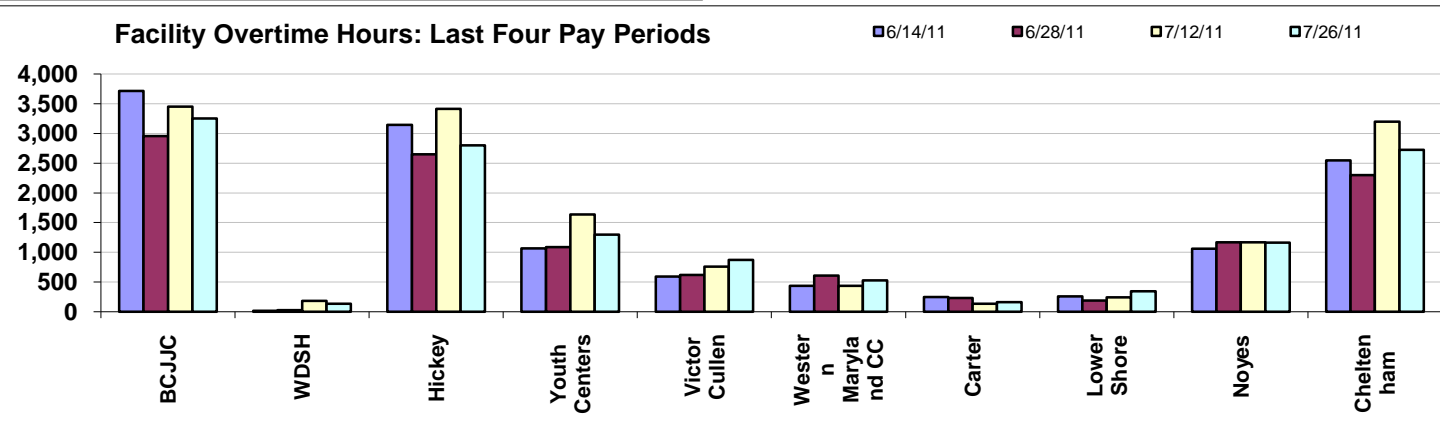
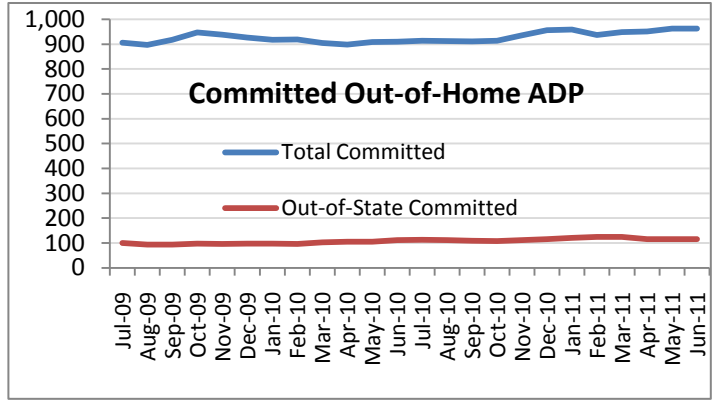
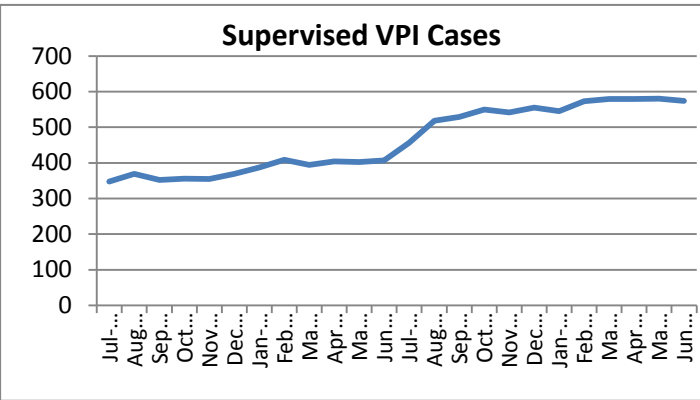
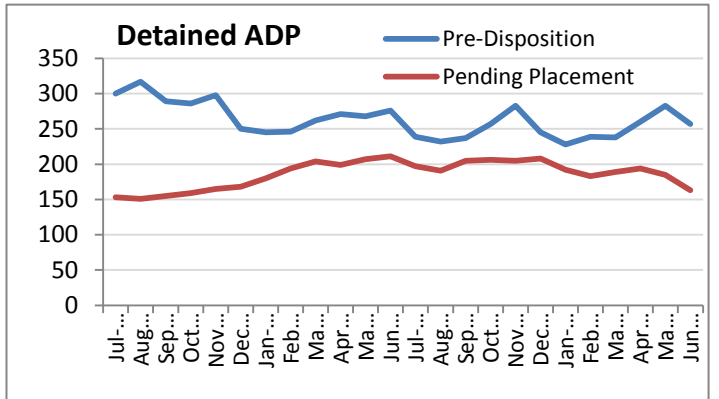
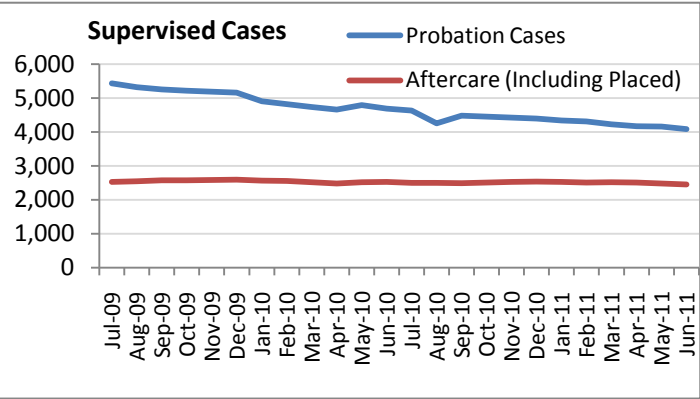
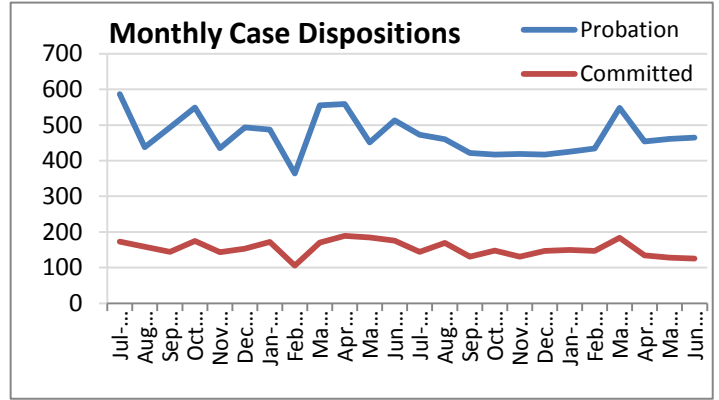
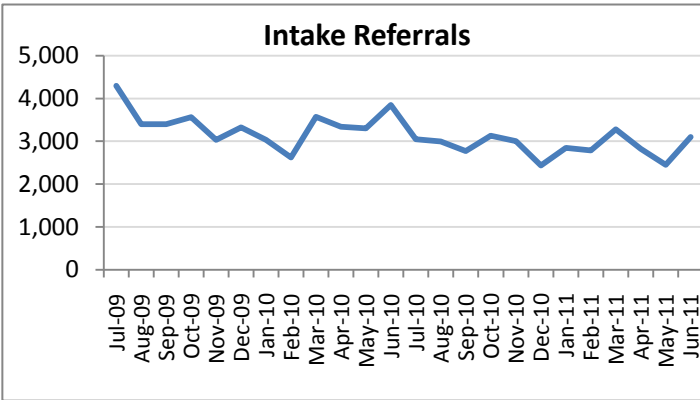
DJS Management Team

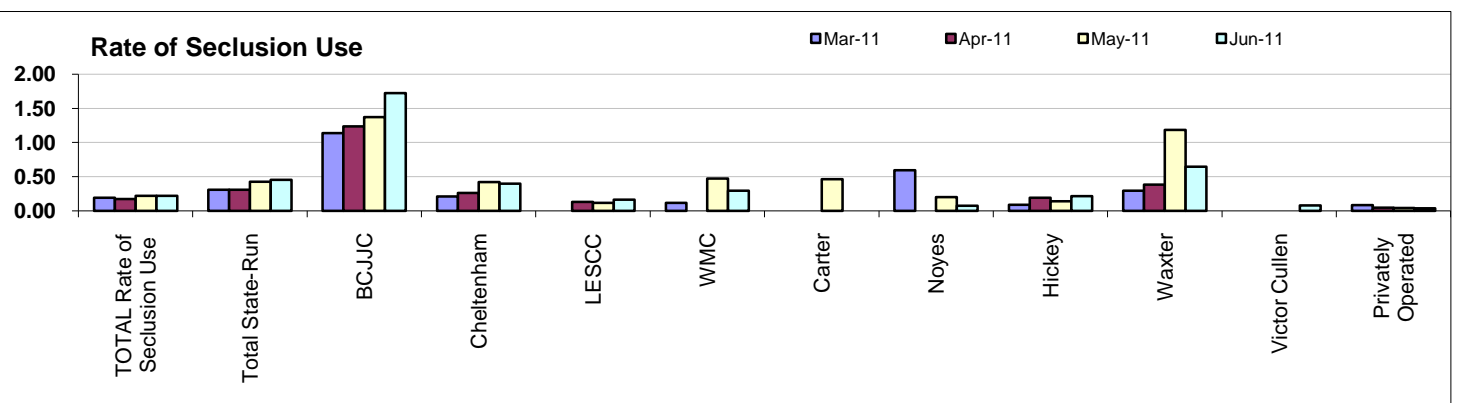
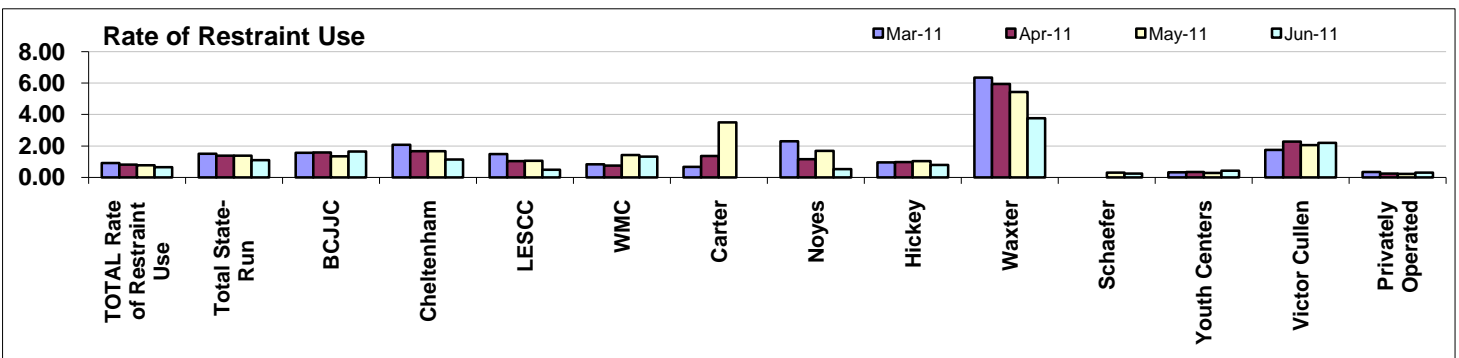
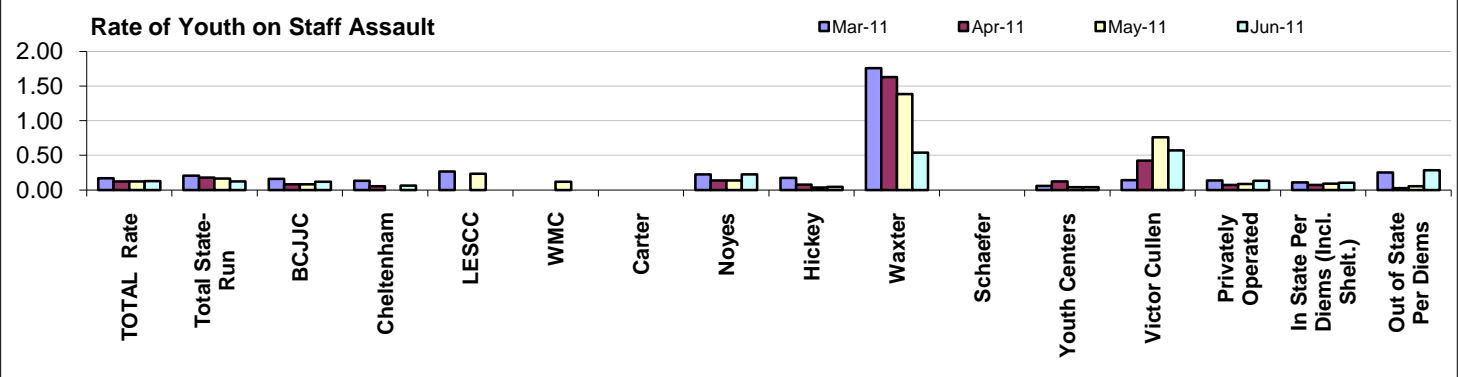
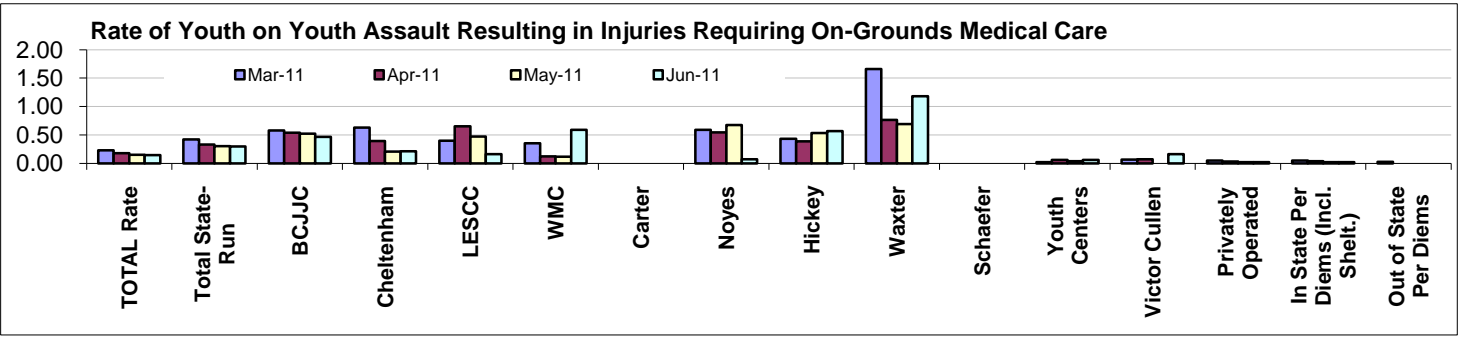
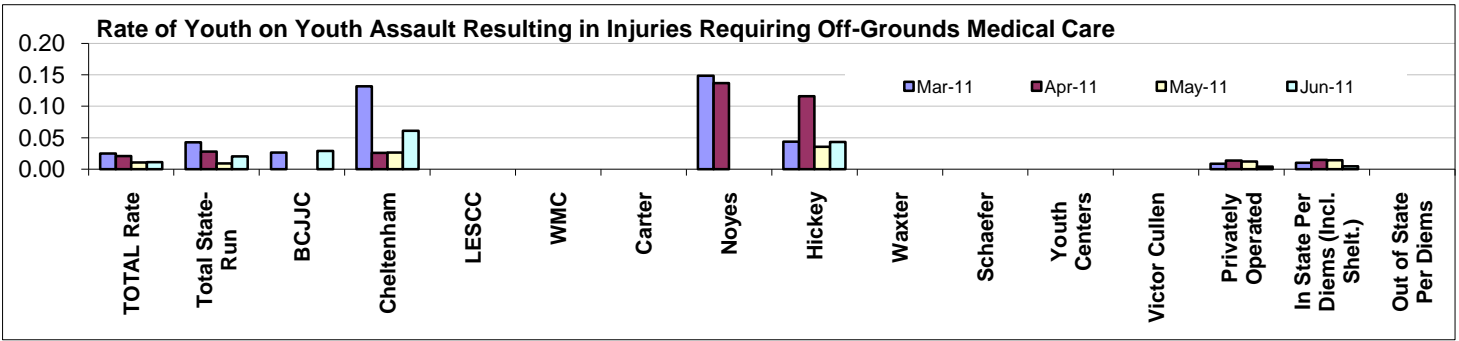
Secretary: *Sam Abed*

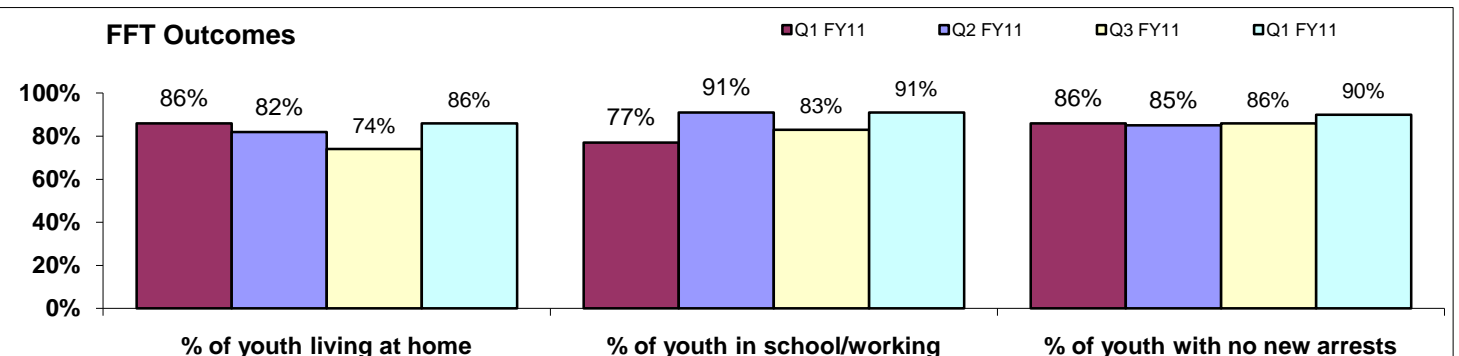
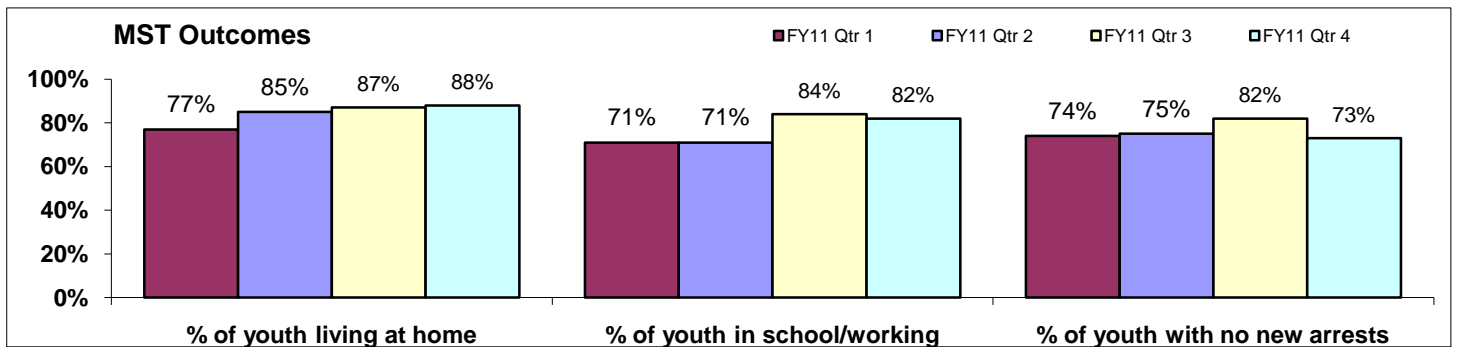
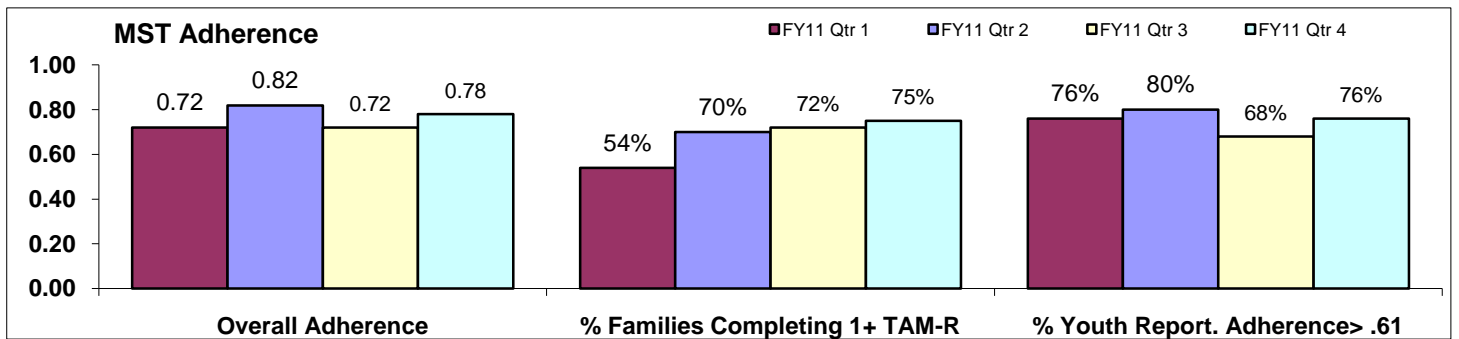
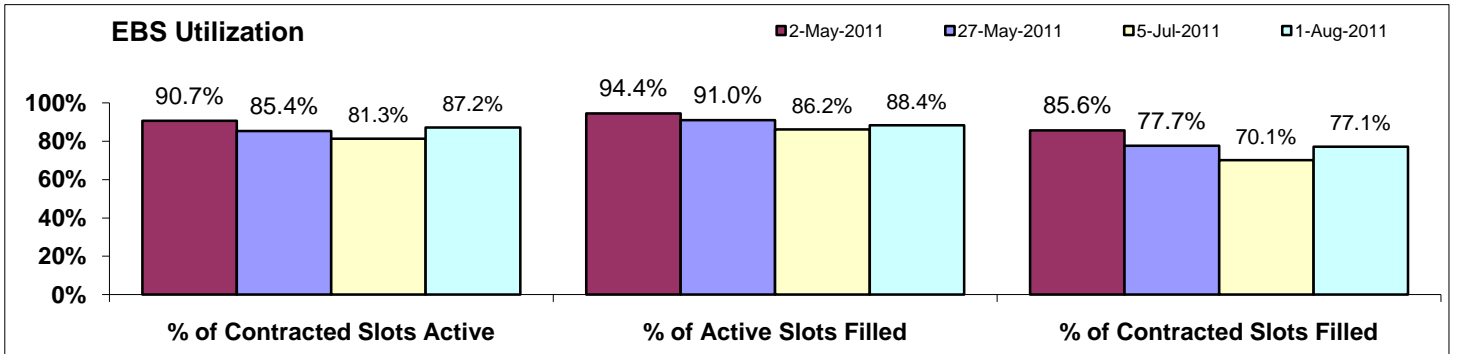
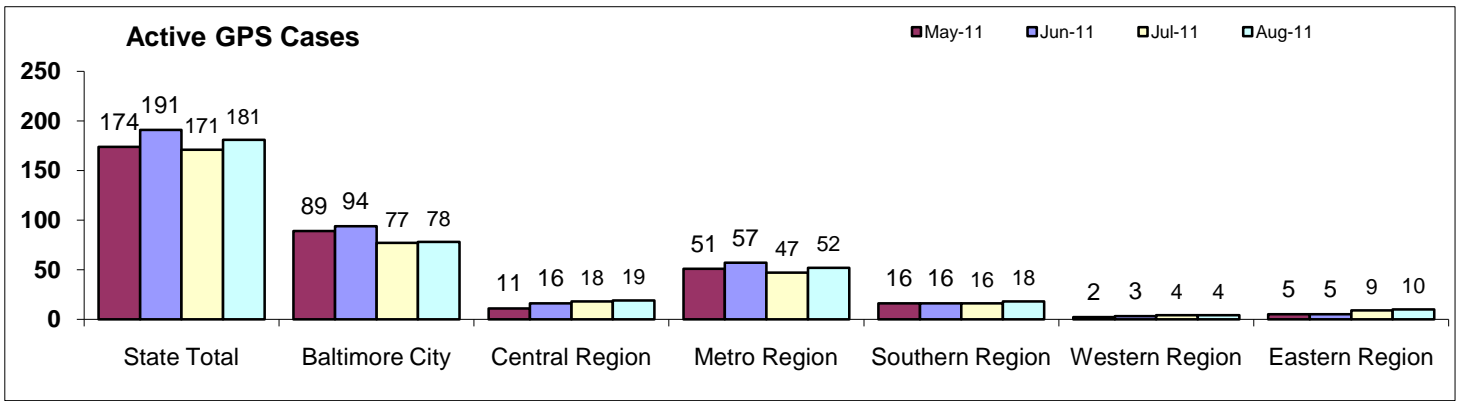
Appointed: March 2011

Deputy Secretary for Administration: *Lynette Holmes*

Deputy Secretary for Operations: *Linda McWilliams*







DJS StateStat Overview

Month	New Intake Cases	Intake Decisions Made*			Disposition of Formaled Cases**		Community Supervision*** Cases			
		Cases Closed at Intake	Cases Informaled	Cases Formaled	Probation Dispositions	Committed Dispositions	Community Supervision Cases Total	Informal Cases	Probation Cases	Aftercare (Including Placed)
Change from Last Month	27%	2%	-1%	0%	1%	-2%	-2%	-2%	-2%	-1%
Change from Same Month Last Yr	-19%	-12%	-11%	-17%	-9%	-29%	-13%	-23%	-13%	-3%
Change from 6-Mo Pd. Last Yr.	-12%	-13%	-4%	-6%	-5%	-13%	-9%	-15%	-12%	-1%
Jun-11	3,103	1,166	616	1,313	465	125	8,238	1,696	4,085	2,457
May-11	2,452	1,141	621	1,317	461	128	8,370	1,722	4,165	2,483
Apr-11	2,821	1,103	579	1,207	454	134	8,364	1,679	4,171	2,514
Mar-11	3,283	1,247	598	1,500	548	184	8,378	1,633	4,227	2,518
Feb-11	2,788	1,041	519	1,283	434	147	8,449	1,625	4,310	2,514
Jan-11	2,849	1,088	540	1,216	425	150	8,496	1,625	4,344	2,527
Dec-10	2,434	1,103	442	1,117	417	147	8,597	1,658	4,396	2,543
Nov-10	3,001	1,073	500	1,334	419	131	8,517	1,567	4,425	2,525
Oct-10	3,128	1,100	469	1,376	417	148	8,444	1,485	4,452	2,507
Sep-10	2,772	1,000	508	1,347	422	131	8,532	1,556	4,486	2,490
Aug-10	2,999	1,253	577	1,466	460	169	8,585	1,826	4,253	2,506
Jul-10	3,051	1,484	584	1,319	473	144	9,271	2,139	4,633	2,499
Jun-10	3,847	1,321	692	1,588	513	176	9,417	2,207	4,685	2,525
May-10	3,299	1,199	567	1,452	451	185	9,557	2,246	4,794	2,517
Apr-10	3,340	1,255	626	1,405	559	189	9,143	1,994	4,665	2,484
Mar-10	3,571	1,431	683	1,488	555	170	9,135	1,879	4,732	2,524
Feb-10	2,620	1,154	495	1,101	364	106	9,060	1,677	4,826	2,557
Jan-10	3,037	1,470	557	1,337	487	172	9,164	1,689	4,906	2,569
Dec-09	3,326	1,068	591	1,384	493	153	9,776	2,024	5,159	2,593
Nov-09	3,036	1,115	490	1,323	435	143	9,908	2,140	5,186	2,582
Oct-09	3,562	1,286	521	1,558	549	175	9,963	2,162	5,222	2,579
Sep-09	3,401	1,383	592	1,576	493	144	10,059	2,226	5,255	2,578
Aug-09	3,403	1,686	655	1,568	438	159	10,261	2,388	5,321	2,552
Jul-09	4,296	1,800	685	1,720	587	173	10,401	2,437	5,433	2,531
Jun-09	4,622	1,819	770	2,051	553	168	10,452	2,491	5,438	2,523
May-09	3,821	1,766	669	1,574	514	163	10,603	2,541	5,542	2,520
Apr-09	4,441	1,744	769	1,838	606	198	10,673	2,481	5,658	2,534
Mar-09	4,495	1,639	821	1,710	677	160	10,565	2,398	5,639	2,528
Feb-09	3,559	1,229	670	1,387	515	165	9,158	2,387	5,597	2,542
Jan-09	3,466	1,533	655	1,473	548	169	9,055	2,356	5,587	2,549
Dec-08	3,546	1,623	731	1,587	482	146	9,067	2,527	5,609	2,597
Nov-08	3,216	1,470	614	1,358	426	122	9,051	2,510	5,612	2,584
Oct-08	4,620	1,668	756	1,971	518	149	9,047	2,423	5,585	2,613
Sep-08	4,766	1,621	763	1,829	484	135	9,183	2,246	5,643	2,648
Aug-08	3,471	1,580	638	1,587	564	171	9,170	2,306	5,659	2,690
Jul-08	4,490	1,765	833	1,910	555	157	9,210	2,330	5,639	2,696
Jun-08							9,410	2,325	5,733	2,727
May-08							9,461	2,244	5,752	2,755
Apr-08							9,507	2,271	5,818	2,772
Mar-08							8,667	2,321	5,743	2,762
Feb-08							8,516	2,296	5,625	2,744
Jan-08							8,500	2,300	5,562	2,757
Dec-07							8,413	2,277	5,506	2,794
Nov-07							8,433	2,175	5,445	2,813
Oct-07							8,370	2,305	5,386	2,829
Sep-07							8,334	2,284	5,342	2,824
Aug-07							8,403	2,407	5,378	2,868
Jul-07							8,375	2,510	5,348	2,871
Jun-07							8,404	2,405	5,342	2,887
May-07							8,427	2,397	5,363	2,902
Apr-07							8,334	2,456	5,242	2,918
Mar-07							8,337	2,509	5,237	2,913

DJS StateStat Overview

Month	Detention Alternatives ADP	Pre-D Detention			Detention Pending Placement			Committed				
		Detention Admissions	Pre-D Detention ADP	Detention ALOS	Pending Placement Admissions	Pending Placement ADP	Pending Placement ALOS	VPI Cases Under Supervision+	Committed ADP	State-Run	Private In-State	Private Out of State
Change from Last Month	4%	10%	-9%	4%	6%	-12%	0%	0%	0%	0%	0%	0%
Change from Same Month Last Yr	-23%	-3%	-7%	16%	-15%	-23%	18%	44%	6%	4%	6%	5%
Change from 6-Mo Pd. Last Yr.	-20%	-3%	-4%	3%	-9%	-7%	7%	44%	5%	4%	3%	16%
Jun-11		571	257	15.8	133	163	46.0	574	962	222	624	116
May-11	633	520	283	15.2	126	185	46.0	580	962	222	624	116
Apr-11	611	573	260	12.5	118	194	42.0	579	951	227	607	116
Mar-11	651	613	238	13.8	141	189	39.0	579	948	225	599	124
Feb-11	656	485	239	15.6	136	183	41.1	573	937	224	589	124
Jan-11	608	486	228	14.5	141	192	49.0	545	958	218	619	121
Dec-10	610	451	245	17.2	127	208	51.0	555	956	221	619	116
Nov-10	610	525	283	16.3	144	205	42.0	542	935	221	602	112
Oct-10	682	595	257	14.6	122	206	46.0	550	913	220	585	108
Sep-10	687	526	237	13.6	136	205	42.0	529	911	219	582	109
Aug-10	720	535	232	13.5	158	191	44.0	518	912	219	581	112
Jul-10	662	512	239	14.2	128	197	44.0	456	913	218	582	113
Jun-10	826	588	276	13.6	157	211	39.0	407	910	214	586	111
May-10	823	584	268	13.1	156	207	43.9	402	908	209	594	105
Apr-10	843	630	271	14.1	143	199	42.0	404	898	204	589	105
Mar-10	819	621	262	14.5	146	204	42.7	394	904	208	593	103
Feb-10	771	350	246	15.3	124	194	47.9	409	919	221	602	96
Jan-10	718	570	245	14.5	152	180	29.5	387	917	229	591	97
Dec-09	732	519	250	16.7	131	168	38.4	369	927	224	606	97
Nov-09	712	576	298	13.5	121	165	35.8	355	938	228	614	96
Oct-09	705	595	286	13.7	151	159	32.9	356	947	230	620	97
Sep-09	759	627	289	13.9	143	155	31.1	352	918	221	603	94
Aug-09	750	654	317	15.3	135	151	33.4	369	897	223	581	93
Jul-09	782	605	300	15.4	159	153	32.0	348	906	227	579	100
Jun-09	822				141		35.7	336	884	219	557	108
May-09	900				147		28.0	338	890	233	544	113
Apr-09	910				159		31.5	333	901	249	537	115
Mar-09	915				148		33.4	288	898	246	536	116
Feb-09	860				123		35.5	277	876	233	530	113
Jan-09	773				114		32.2	273	912	234	566	112
Dec-08	713				112		36.2	256	931	235	586	110
Nov-08	717				106		31.7	235	936	232	597	107
Oct-08	705				114		30.4	230	967	231	627	109
Sep-08	748				111		32.7	234	982	229	645	108
Aug-08	662				125		33.7		1,003	233	663	107
Jul-08	690				152		33.1		1,014	241	666	107
Jun-08	774				140		35.8		1,021	236	676	109
May-08	797				124		33.0		1,013	231	675	107
Apr-08	752				133		31.8		1,011	231	670	110
Mar-08					133		29.4		1,005	225	663	117
Feb-08					112		35.4		1,011	222	665	124
Jan-08					140		40.8		1,024	224	676	124
Dec-07					81		32.0		1,025	228	667	130
Nov-07					132		42.7		1,028	222	672	134
Oct-07					118		37.0		1,023	212	677	134
Sep-07					115		52.7		1,001	204	671	126
Aug-07					120		36.9		1,017	208	688	121
Jul-07					114		41.7		1,020	199	707	114
Jun-07					135		40.1		1,027	186	727	114
May-07					111		50.8		1,050	193	738	119
Apr-07					127		47.4		1,057	194	743	120
Mar-07					144		43.0		1,008	194	701	113

DJS StateStat - Intake and Dispositions

Month	New Intake Referrals During Month: Complaint Count								
	Total Cases	Gender		Region					
		Male	Female	Baltimore City	Central Region	Eastern Region	Metro Region	Southern Region	Western Region
Change from Last Month	7%	12%	-6%	1%	15%	19%	-5%	7%	5%
Change from Same Month Last Yr	-14%	-11%	-21%	-26%	-16%	-25%	-13%	9%	-14%
Change from 6-Mo Period Last Yr.	-8%	-8%	-11%	-25%	-5%	-10%	-14%	5%	2%
Jun-11	3,103	2,321	782	400	789	377	601	606	330
May-11	2,912	2,076	836	395	684	318	633	567	315
Apr-11	2,875	2,088	787	348	700	318	578	619	312
Mar-11	3,415	2,501	914	397	843	346	760	683	386
Feb-11	2,862	2,120	742	355	727	334	650	525	271
Jan-11	2,971	2,179	792	352	755	326	712	565	261
Dec-10	2,662	1,973	689	287	769	302	573	508	223
Nov-10	2,907	2,083	824	406	792	342	552	479	336
Oct-10	2,945	2,193	752	469	717	362	578	531	288
Sep-10	2,855	2,111	744	471	736	389	575	410	274
Aug-10	3,296	2,408	888	476	750	514	633	572	351
Jul-10	3,387	2,423	964	488	831	575	681	603	209
Jun-10	3,601	2,610	991	538	935	502	689	554	383
May-10	3,218	2,307	911	511	800	299	720	563	325
Apr-10	3,286	2,362	924	530	780	350	714	619	293
Mar-10	3,602	2,627	975	568	850	363	874	615	332
Feb-10	2,750	1,995	755	365	569	333	699	544	240
Jan-10	3,364	2,479	885	487	803	407	899	511	257
Dec-09	3,043	2,251	792	427	799	328	615	574	300
Nov-09	2,928	2,134	794	515	730	332	558	524	269
Oct-09	3,365	2,473	892	595	866	382	649	559	314
Sep-09	3,551	2,616	935	595	887	505	790	494	280
Aug-09	3,909	2,879	1,030	819	848	460	893	588	301
Jul-09	4,205	3,037	1,168	714	1,083	595	890	624	299
Jun-09	4,640	3,349	1,291	760	1,152	514	1,098	772	344
May-09	4,009	2,854	1,155	670	925	371	1,061	648	334
Apr-09	4,351	3,228	1,123	652	963	439	1,163	740	394
Mar-09	4,170	3,040	1,130	613	1,106	434	981	640	396
Feb-09	3,286	2,424	862	504	927	364	627	556	308
Jan-09	3,661	2,704	957	553	981	482	714	612	319
Dec-08	3,941	2,921	1,020	609	942	444	936	671	339
Nov-08	3,442	2,577	865	555	839	344	877	561	266
Oct-08	4,395	3,290	1,105	627	1,055	535	1,106	640	432
Sep-08	4,213	3,157	1,056	767	1,045	517	890	623	371
Aug-08	3,806	2,853	953	642	915	456	846	671	276
Jul-08	4,508	3,387	1,121	793	1,111	657	931	667	349

DJS StateStat - Intake and Dispositions

Month	Intake Decisions Made During Month, Regardless of Complaint Date												
	Total Decisions Made	Closed At Intake		Cases Informally Adjusted									
		Number	Rate	Total Informaled	Rate of Cases Informaled	Male	Female	Baltimore City	Central Region	Eastern Region	Metro Region	Southern Region	Western Region
Change from Last Month	1%	2%	2%	-1%	-1%	2%	-8%	-62%	6%	13%	3%	17%	-10%
Change from Same Month Last Yr	-14%	-12%	3%	-11%	4%	-8%	-18%	50%	-18%	-38%	8%	5%	-25%
Change from 6-Mo Period Last Yr.	-9%	-13%	-5%	-4%	5%	1%	-14%	119%	-12%	-25%	4%	-5%	-5%
Jun-11	3,095	1,166	38%	616	20%	445	171	24	124	78	156	149	85
May-11	3,079	1,141	37%	621	20%	436	185	63	117	69	151	127	94
Apr-11	2,891	1,103	38%	579	20%	398	181	52	109	63	121	133	101
Mar-11	3,370	1,247	37%	598	18%	417	181	33	108	80	131	151	95
Feb-11	2,843	1,041	37%	519	18%	384	135	44	111	50	145	103	66
Jan-11	2,844	1,088	38%	540	19%	375	165	16	121	87	122	119	75
Dec-10	2,662	1,103	41%	442	17%	320	122	16	92	68	88	116	62
Nov-10	2,907	1,073	37%	500	17%	351	149	19	120	78	103	81	99
Oct-10	2,945	1,100	37%	469	16%	331	138	15	112	88	85	90	79
Sep-10	2,855	1,000	35%	508	18%	385	123	30	109	98	108	101	62
Aug-10	3,296	1,253	38%	577	18%	389	188	22	110	116	106	141	82
Jul-10	3,387	1,484	44%	584	17%	402	182	10	123	151	123	131	46
Jun-10	3,601	1,321	37%	692	19%	483	209	16	151	126	144	142	113
May-10	3,218	1,199	37%	567	18%	376	191	13	113	68	133	132	108
Apr-10	3,286	1,255	38%	626	19%	408	218	16	160	74	130	161	85
Mar-10	3,602	1,431	40%	683	19%	468	215	28	146	106	150	146	107
Feb-10	2,750	1,154	42%	495	18%	321	174	9	88	100	106	121	71
Jan-10	3,364	1,470	44%	557	17%	385	172	24	128	93	130	122	60
Dec-09	3,043	1,068	35%	591	19%	425	166	13	153	87	130	111	97
Nov-09	2,928	1,115	38%	490	17%	356	134	20	95	94	97	100	84
Oct-09	3,365	1,286	38%	521	15%	361	160	34	115	80	122	110	90
Sep-09	3,551	1,383	39%	592	17%	451	141	30	130	136	110	99	87
Aug-09	3,909	1,686	43%	655	17%	476	179	38	142	132	131	115	97
Jul-09	4,205	1,800	43%	685	16%	492	193	29	166	144	145	119	82
Jun-09	4,640	1,819	39%	770	17%	564	206	53	190	133	161	127	106
May-09	4,009	1,766	44%	669	17%	458	211	33	155	101	150	135	95
Apr-09	4,351	1,744	40%	769	18%	575	194	34	174	110	164	171	116
Mar-09	4,170	1,639	39%	821	20%	568	253	60	210	97	152	183	119
Feb-09	3,286	1,229	37%	670	20%	461	209	29	162	111	134	132	102
Jan-09	3,661	1,533	42%	655	18%	457	198	8	153	149	129	127	89
Dec-08	3,941	1,623	41%	731	19%	495	236	22	154	113	183	155	104
Nov-08	3,442	1,470	43%	614	18%	417	197	22	134	80	165	116	97
Oct-08	4,395	1,668	38%	756	17%	539	217	18	193	124	149	143	129
Sep-08	4,213	1,621	38%	763	18%	539	224	29	211	154	107	135	127
Aug-08	3,805	1,580	42%	638	17%	454	184	14	141	129	126	125	103
Jul-08	4,508	1,765	39%	833	18%	579	254	34	168	231	143	123	134

DJS StateStat - Intake and Dispositions

Month	Intake Decisions Made During Month, Regardless of Complaint Date									
	Cases Formally Petitioned									
	Cases Formaled	Rate of Cases Formaled	Male	Female	Baltimore City	Central Region	Eastern Region	Metro Region	Southern Region	Western Region
Change from Last Month	0%	-1%	2%	-9%	1%	11%	4%	-4%	-19%	-1%
Change from Same Month Last Yr	-17%	-4%	-16%	-23%	-31%	-10%	0%	-34%	1%	-1%
Change from 6-Mo Period Last Yr.	-6%	2%	-7%	-4%	-28%	5%	14%	-19%	8%	22%
Jun-11	1,313	42%	1,077	236	283	372	137	201	173	147
May-11	1,317	43%	1,057	260	279	335	132	210	213	148
Apr-11	1,207	42%	956	251	219	348	135	207	152	146
Mar-11	1,500	45%	1,242	258	301	397	118	321	210	153
Feb-11	1,283	45%	1,050	233	258	350	123	247	184	121
Jan-11	1,216	43%	976	240	221	355	104	246	186	104
Dec-10	1,117	42%	933	184	234	317	103	230	150	83
Nov-10	1,334	46%	1,063	271	318	359	122	228	168	139
Oct-10	1,376	47%	1,155	221	343	339	152	216	207	119
Sep-10	1,347	47%	1,082	265	361	343	127	263	135	118
Aug-10	1,466	44%	1,223	243	344	321	174	299	194	134
Jul-10	1,319	39%	1,062	257	316	315	136	264	201	87
Jun-10	1,588	44%	1,283	305	412	415	137	304	172	148
May-10	1,452	45%	1,183	269	406	364	91	323	157	111
Apr-10	1,405	43%	1,130	275	386	317	113	309	169	111
Mar-10	1,488	41%	1,203	285	406	395	86	310	178	113
Feb-10	1,101	40%	924	177	250	237	96	237	183	98
Jan-10	1,337	40%	1,108	229	319	328	136	287	175	92
Dec-09	1,384	45%	1,152	232	346	341	117	291	182	107
Nov-09	1,323	45%	1,073	250	405	305	101	213	195	104
Oct-09	1,558	46%	1,256	302	437	375	126	283	208	129
Sep-09	1,576	44%	1,269	307	436	382	164	302	175	117
Aug-09	1,568	40%	1,302	266	479	341	115	320	189	124
Jul-09	1,720	41%	1,419	301	500	441	121	341	182	135
Jun-09	2,051	44%	1,657	394	564	528	159	400	275	125
May-09	1,574	39%	1,261	313	462	347	114	350	190	111
Apr-09	1,838	42%	1,460	378	481	425	153	416	234	129
Mar-09	1,710	41%	1,383	327	476	446	154	292	175	167
Feb-09	1,387	42%	1,160	227	370	359	103	309	143	103
Jan-09	1,473	40%	1,217	256	421	389	143	201	207	112
Dec-08	1,587	40%	1,323	264	429	376	154	313	202	113
Nov-08	1,358	39%	1,122	236	401	340	107	226	192	92
Oct-08	1,971	45%	1,636	335	509	441	178	436	200	207
Sep-08	1,829	43%	1,527	302	515	457	168	333	197	159
Aug-08	1,587	42%	1,325	262	491	404	112	268	181	131
Jul-08	1,910	42%	1,601	309	516	558	143	316	231	146

DJS StateStat - Intake and Dispositions

Month	Probation Dispositions of Formaled Cases, Youth Count									Committed Dispositions of Formaled Cases, Youth Count								
	Total Probation Disp.	Male	Female	Baltimore City	Central Region	Eastern Region	Metro Region	Southern Region	Western Region	Total Committed Disp.	Male	Female	Baltimore City	Central Region	Eastern Region	Metro Region	Southern Region	Western Region
Change from Last Month	1%	7%	-26%	13%	-26%	4%	20%	8%	20%	-2%	-5%	21%	11%	8%	-40%	-35%	-6%	171%
Change from Same Month Last Yr	-9%	-6%	-24%	-31%	9%	28%	-17%	-21%	10%	-29%	-30%	-19%	-37%	-10%	-8%	-57%	-6%	-10%
Change from 6-Mo Period Last Yr.	-5%	-5%	-5%	-34%	21%	-1%	-7%	0%	6%	-13%	-15%	-1%	-38%	4%	15%	-4%	-4%	-19%
Jun-11	465	399	66	86	111	51	95	55	67	125	108	17	31	27	12	20	16	19
May-11	461	372	89	76	150	49	79	51	56	128	114	14	28	25	20	31	17	7
Apr-11	454	370	84	92	123	40	94	51	56	134	120	14	38	20	17	29	15	15
Mar-11	548	446	102	98	184	43	102	59	62	184	166	18	38	29	21	55	26	15
Feb-11	434	365	69	75	139	32	68	54	66	147	115	32	26	23	18	38	18	24
Jan-11	425	352	72	95	120	31	78	47	54	150	130	20	30	29	12	56	17	6
Dec-10	417	350	67	66	121	88	60	33	49	147	133	14	39	17	39	18	20	14
Nov-10	419	348	71	82	121	88	41	44	43	131	112	19	31	22	33	11	14	20
Oct-10	417	345	72	89	113	30	91	51	43	148	133	15	42	22	14	39	15	16
Sep-10	422	353	69	91	118	34	78	54	47	131	112	19	25	19	17	39	14	17
Aug-10	460	377	83	123	102	43	79	57	56	169	147	22	57	19	21	36	23	13
Jul-10	473	370	103	134	108	24	104	61	42	144	131	13	38	18	19	38	20	11
Jun-10	513	426	87	125	102	40	115	70	61	176	155	21	49	30	13	46	17	21
May-10	451	383	68	124	93	42	91	48	53	185	165	20	59	36	21	42	14	13
Apr-10	559	455	104	152	137	57	116	42	55	189	166	23	60	23	12	53	26	15
Mar-10	555	458	97	155	147	46	91	65	51	170	144	26	58	19	14	37	22	20
Feb-10	364	310	54	100	75	36	55	43	55	106	94	12	26	18	9	21	14	18
Jan-10	487	392	95	131	127	27	89	48	65	172	158	14	54	21	18	39	21	19
Dec-09	493	388	105	143	122	36	85	56	51	153	125	28	46	21	16	36	17	17
Nov-09	435	361	74	116	125	32	71	40	51	143	126	17	32	20	15	45	15	16
Oct-09	549	452	97	147	138	56	88	62	58	175	165	10	34	19	14	65	18	25
Sep-09	493	412	81	122	122	44	104	52	49	144	122	22	40	16	13	45	20	10
Aug-09	438	381	57	96	121	41	85	49	46	159	142	17	34	26	13	46	16	24
Jul-09	587	482	105	161	121	50	133	61	61	173	152	21	46	25	24	41	22	15
Jun-09	553	448	105	148	140	46	110	54	55	168	146	22	35	21	17	52	18	25
May-09	514	411	103	143	112	47	112	45	55	163	141	22	35	31	26	37	16	18
Apr-09	606	500	106	168	154	56	113	58	57	198	179	19	52	36	18	52	23	17
Mar-09	677	545	132	165	211	49	107	75	70	160	139	21	40	19	20	37	27	17
Feb-09	515	423	92	136	119	46	110	54	50	165	144	21	36	22	21	47	23	16
Jan-09	548	451	97	122	151	54	114	52	55	169	149	20	43	23	32	42	14	15
Dec-08	482	423	59	122	141	27	89	56	47	146	123	23	51	16	11	30	22	16
Nov-08	426	355	71	110	117	29	84	50	36	122	110	12	23	18	16	34	13	18
Oct-08	518	437	81	147	139	43	89	55	45	149	129	20	52	24	13	29	15	16
Sep-08	484	396	88	118	119	39	109	56	43	135	119	16	21	27	13	35	23	16
Aug-08	564	489	75	142	136	45	124	60	57	171	150	21	36	26	15	45	28	21
Jul-08	555	440	115	131	153	57	99	69	46	157	137	20	34	42	16	37	14	14

DJS StateStat Supervision

Month	Supervisor Case Reviews Completed On Time						
	Overall	Baltimore City	Central Region	Eastern Region	Metro Region	Southern Region	Western Region
Change from Last Month	4%	2%	8%	1%	3%	9%	-3%
Change from Same Month Last Yr	6%	5%	6%	12%	9%	0%	-2%
Change from 6-Mo Period Last Yr.	-1%	-6%	-10%	-1%	14%	-2%	0%
Jun-11	93%	87%	92%	99%	95%	96%	95%
May-11	89%	85%	85%	98%	92%	88%	98%
Apr-11	85%	78%	76%	96%	96%	81%	97%
Mar-11	80%	74%	67%	85%	84%	91%	91%
Feb-11	88%	79%	76%	96%	97%	97%	96%
Jan-11	92%	85%	92%	93%	98%	95%	94%
Dec-10	93%	85%	96%	99%	94%	96%	92%
Nov-10	87%	80%	89%	91%	91%	86%	93%
Oct-10	86%	76%	91%	88%	94%	83%	95%
Sep-10	92%	84%	94%	97%	95%	94%	96%
Aug-10	94%	93%	85%	97%	94%	95%	93%
Jul-10	92%	94%	79%	99%	92%	96%	92%
Jun-10	88%	83%	87%	88%	87%	96%	97%
May-10	89%	84%	94%	98%	82%	91%	97%
Apr-10	89%	90%	95%	97%	82%	91%	86%
Mar-10	86%	84%	84%	98%	79%	93%	97%
Feb-10	87%	91%	91%	95%	69%	96%	96%
Jan-10	93%	88%	94%	96%	94%	94%	96%
Dec-09	91%	84%	90%	97%	95%	90%	95%
Nov-09	94%	91%	91%	96%	95%	95%	96%
Oct-09	93%	93%	92%	98%	87%	97%	98%
Sep-09	95%	93%	95%	95%	98%	95%	98%
Aug-09	95%	94%	95%	99%	94%	97%	96%
Jul-09	97%	96%	94%	98%	99%	98%	97%
Jun-09	96%	93%	95%	98%	97%	98%	96%
May-09	78%	67%	82%	82%	74%	88%	94%
Apr-09	78%	61%	89%	86%	86%	73%	94%
Mar-09	76%	59%	84%	83%	77%	85%	90%
Feb-09	75%	71%	77%	84%	68%	77%	94%
Jan-09	65%	78%	47%	56%	44%	94%	77%
Dec-08							
Nov-08							
Oct-08							
Sep-08							
Aug-08							
Jul-08							
Jun-08							
May-08							
Apr-08							
Mar-08							
Feb-08							
Jan-08							
Dec-07							
Nov-07							
Oct-07							
Sep-07							
Aug-07							
Jul-07							
Jun-07							
May-07							
Apr-07							
Mar-07							
Feb-07							
Jan-07							
Dec-06							

Month

Change from Last Month
Change from Same Month Last Yr
Change from 6-Mo Period Last Yr.
Jun-11
May-11
Apr-11
Mar-11
Feb-11
Jan-11
Dec-10
Nov-10
Oct-10
Sep-10
Aug-10
Jul-10
Jun-10
May-10
Apr-10
Mar-10
Feb-10
Jan-10
Dec-09
Nov-09
Oct-09
Sep-09
Aug-09
Jul-09
Jun-09
May-09
Apr-09
Mar-09
Feb-09
Jan-09
Dec-08
Nov-08
Oct-08
Sep-08
Aug-08
Jul-08
Jun-08
May-08
Apr-08
Mar-08
Feb-08
Jan-08
Dec-07
Nov-07
Oct-07
Sep-07
Aug-07
Jul-07
Jun-07
May-07
Apr-07
Mar-07
Feb-07
Jan-07
Dec-06

DJS StateStat Residential

Month	Detention Alternatives					Pre-Disposition Detention					
	Total ADP	Shelter ADP	Evening Reporting including PACT-B. City	CD/EM	Other Detention Alternatives (DRAP)	Pre-Disp. ADP	Male	Female	Pre-Disp. Admissions	Pre-Disp. Releases	Pre Disp. ALOS
Change from Last Month	4%	-6%	134%	-3%	-71%	-9%	-9%	-6%	10%	1%	4%
Change from Same Month Last Yr	-23%	68%	0%	-27%	-95%	-7%	-5%	-21%	-3%	-3%	16%
Change from 6-Mo Pd. Last Yr.	-20%	4%	-23%	-16%	-83%	-4%	-1%	1%	-3%	-2%	3%
Jun-11						257	226	31	571	576	15.8
May-11	633	33	75	525		283	249	33	520	572	15.2
Apr-11	611	35	32	542	2	260	248	35	573	551	12.5
Mar-11	651	34	72	579	7	238	226	34	613	573	13.8
Feb-11	656	32	46	567	11	239	208	31	485	491	15.6
Jan-11	608	19	56	526	7	228	195	33	486	467	14.5
Dec-10	610	21	53	518	5	245	213	32	451	499	17.2
Nov-10	610	22	30	536	5	283	243	39	525	543	16.3
Oct-10	682	15	63	575	13	257	227	29	595	576	14.6
Sep-10	687	17	59	577	19	237	205	32	526	465	13.6
Aug-10	720	23	59	608	22	232	195	37	535	568	13.5
Jul-10	662	24	65	544	21	239	203	36	512	536	14.2
Jun-10	826	24	63	730	29	276	237	39	588	595	13.6
May-10	823	20	75	717	35	268	232	36	584	591	13.1
Apr-10	843	34	78	696	38	271	236	35	630	627	14.1
Mar-10	819	22	92	655	35	262	227	35	621	583	14.5
Feb-10	771	34	71	635	39	246	221	25	350	383	15.3
Jan-10	718	34	58	590	39	245	219	26	570	522	14.5
Dec-09	732	24	62	598	34	250	222	27	519	593	16.7
Nov-09	712	20	70	564	39	298	259	39	576	556	13.5
Oct-09	705	23	65	566	33	286	250	36	595	617	13.7
Sep-09	759	42	69	600	37	289	255	34	627	645	13.9
Aug-09	750	44	65	633	41	317	281	36	654	621	15.3
Jul-09	782	43	66	613	28	300	262	38	605	643	15.4
Jun-09	822	55	72	645	34						
May-09	900	44	59	641	29						
Apr-09	910	53	53	698	33						
Mar-09	915	81	60	707	31						
Feb-09	860	34	65	637	33						
Jan-09	773	46	57	592	25						
Dec-08	713	56	57	561	16						
Nov-08	717	40	52	562	18						
Oct-08	705	56	56	535	20						
Sep-08	748	55	59	558	27						
Aug-08	662	47	53	510	17						
Jul-08	690	53	47	537	24						
Jun-08	774	59	46	618	24						
May-08	797	55	60	620	29						
Apr-08	752	45	50	607	24						
Mar-08		41	51	574	18						
Feb-08		56	44	579	10						
Jan-08		52	37	587	2						
Dec-07		65	38	595	2						
Nov-07		87	36	575	0						
Oct-07		71	32	525	0						
Sep-07		61	29	512	4						
Aug-07		68	29	502	4						
Jul-07		67	20	488	4						
Jun-07		67	21	532	4						
May-07		69	17	519	4						
Apr-07		66	17	523	5						
Mar-07		72	20	554	9						

DJS StateStat Residential

Month	Detention Pending Placement											
	Pending Placement ADP	Male	Female	Pending Placement Admissions	Pending Placement Releases	Pending Placement ALOS	Baltimore City	Central Region	Western Region	Eastern Region	Southern Region	Metro Region
Change from Last Month	-14%	-16%	9%	6%	22%	0%	-21%	92%	-3%	33%	-38%	6%
Change from Same Month Last Yr	-23%	-25%	20%	-15%	12%	18%	-2%	39%	3%	-30%	-21%	34%
Change from 6-Mo Pd. Last Yr.	-5%	-3%	-23%	-9%	7%	7%	0%	3%	4%	-26%	22%	12%
Jun-11	163	151	12	133	188	46	41	46	35	28	34	51
May-11	190	179	11	126	154	46	52	24	36	21	55	48
Apr-11	201	191	10	118	129	42	50	42	20	29	40	40
Mar-11	195	186	9	141	136	39	52	42	23	28	32	29
Feb-11	190	174	17	136	128	41	44	35	28	25	47	45
Jan-11	201	188	13	141	152	49	54	50	55	34	36	45
Dec-10	215	201	15	127	143	51	62	56	25	39	42	46
Nov-10	212	194	18	144	135	42	56	45	40	40	22	32
Oct-10	206	183	24	122	123	46	58	38	24	13	43	37
Sep-10	205	183	22	136	131	42	46	38	23	22	50	44
Aug-10	191	177	14	158	147	44	56	36	33	20	32	37
Jul-10	197	186	12	128	142	44	52	37	39	18	40	45
Jun-10	211	201	10	157	168	39	42	33	34	40	43	38
May-10	207	193	13	156	125	44	64	23	37	45	31	34
Apr-10	199	181	18	143	151	42	50	32	40	26	37	46
Mar-10	204	189	15	146	162	43	50	47	31	32	28	44
Feb-10	194	178	16	124	102	48	53	50	21	62	36	44
Jan-10	180	159	21	152	119	29	34	48	26	18	25	25
Dec-09	168	147	20	131	141	38	50	42	33	35	39	27
Nov-09	165	149	16	121	124	36	48	25	44	27	36	32
Oct-09	159	144	14	151	128	33	35	45	25	17	35	35
Sep-09	155	137	17	143	143	31	38	33	17	21	37	25
Aug-09	151	135	16	135	147	33	37	40	35	22	22	33
Jul-09	153	135	18	159	147	32	41	36	38	16	26	31
Jun-09				141	170	36						
May-09				147	134	28						
Apr-09				159	152	31						
Mar-09				148	139	33						
Feb-09				123	112	36						
Jan-09				114	110	32						
Dec-08				112	110	36						
Nov-08				106	93	32						
Oct-08				114	119	30						
Sep-08				111	127	33						
Aug-08				125	144	34						
Jul-08				152	153	33						
Jun-08				140	132	36						
May-08				124	123	33						
Apr-08				133	147	32						
Mar-08				133	102	29						
Feb-08				112	120	35						
Jan-08				140	132	41						
Dec-07				81	111	32						
Nov-07				132	141	43						
Oct-07				118	107	37						
Sep-07				115	121	53						
Aug-07				120	131	37						
Jul-07				114	123	42						
Jun-07				135	134	40						
May-07				111	122	51						
Apr-07				127	144	47						
Mar-07				144	140	43						

DJS StateStat Residential

Month	Committed - Out of Home														
	Committed ADP	State-Operate d ADP	Admissions	Releases	ALOS* at Release	Private, In-State** ADP	Admissions	Releases	ALOS* at Release	Out-of-State ADP	Secure	Non-Secure	Admissions	Releases	ALOS* at Release
Change from Last Month	0%	0%	22%	-2%	-4%	0%	-3%	46%	44%	0%	0%	0%	0%	23%	49%
Change from Same Month Last Yr	8%	3%	34%	2%	-19%	10%	-1%	3%	-4%	5%	95%	14%	-14%	60%	17%
Change from 6-Mo Pd. Last Yr.	4%	3%	18%	-1%	-2%	2%	3%	-9%	-12%	16%	67%	11%	1%	43%	-27%
Jun-11	962	222	55	51	150	624	90	114	217	116	37	83	12	16	402
May-11	962	222	45	52	156	624	93	78	151	116	37	83	12	13	269
Apr-11	950	227	44	45	138	607	80	85	184	116	39	88	7	12	215
Mar-11	948	225	40	38	175	599	115	109	155	124	32	90	7	18	210
Feb-11	937	224	47	43	165	589	86	81	179	124	32	89	12	8	177
Jan-11	937	217	43	38	160	599	103	101	186	121	22	32	18	10	249
Dec-10	919	220	48	50	162	585	92	71	216	114	20	28	12	9	330
Nov-10	913	222	34	34	160	577	88	67	156	114	17	80	14	14	243
Oct-10	893	220	29	24	198	561	85	65	139	112	16	76	10	5	338
Sep-10	891	219	38	34	170	560	91	86	181	112	14	73	8	9	233
Aug-10	889	219	32	30	160	556	114	87	189	114	18	73	15	10	275
Jul-10	883	217	38	34	197	553	100	75	216	113	17	74	10	9	274
Jun-10	893	215	41	50	185	568	91	111	226	110	19	73	14	10	344
May-10	908	210	33	33	165	591	88	93	168	107	21	71	12	7	363
Apr-10	904	206	45	39	177	592	110	115	164	106	22	66	6	7	279
Mar-10	908	210	36	56	139	595	103	113	198	103	22	67	11	12	376
Feb-10	929	226	31	39	163	606	70	84	227	97	20	73	15	6	382
Jan-10	940	231	47	54	137	613	89	110	231	96	15	70	9	12	338
Dec-09	951	229	63	58	136	626	86	97	140	96	18	71	13	12	294
Nov-09	956	230	37	44	104	629	92	79	150	97	19	68	15	15	325
Oct-09	951	234	54	53	106	620	78	89	148	97	21	66	9	12	326
Sep-09	929	226	60	61	125	608	105	91	142	95	19	61	11	5	295
Aug-09	902	226	53	58	143	585	123	134	188	91	17	58	10	10	340
Jul-09	896	229	60	57	121	572	139	105	229	95	16	62	6	22	285
Jun-09	884	219	62	56	152	557	114	117	261	108	16	70	12	13	420
May-09	890	233	45	79	132	544	92	92	207	113	20	78	8	16	305
Apr-09	901	249	52	59	121	537	94	72	186	115	20	80	7	11	277
Mar-09	898	246	59	56	142	536	81	95	191	116	18	81	16	16	272
Feb-09	876	233	55	45	146	530	80	82	180	113	17	81	10	9	262
Jan-09	912	234	47	59	133	566	70	104	194	112	18	79	11	7	274
Dec-08	931	235	46	45	144	586	76	101	199	110	19	74	10	8	190
Nov-08	936	232	53	45	176	597	60	92	141	107	20	68	8	8	299
Oct-08	967	231	51	55	134	627	85	133	172	109	20	68	9	12	251
Sep-08	982	229	44	42	125	645	130	92	214	108	21	67	8	8	366
Aug-08	1,003	233	57	69	135	663	110	138	247	107	23	63	16	9	263
Jul-08	1,014	241	44	47	146	666	116	106	160	107	22	62	15	19	216
Jun-08	1,021	236	56	53	140	676	110	138	217	109	21	68	18	16	380
May-08	1,013	231	45	41	147	675	95	83	179	107	24	58	8	11	276
Apr-08	1,011	231	62	64	125	670	113	103	171	110	24	57	8	14	232
Mar-08	1,005	225	42	38	150	663	98	84	176	117	28	60	10	19	314
Feb-08	1,011	222	50	48	143	665	93	91	164	124	30	61	14	17	304
Jan-08	1,024	224	52	59	139	676	107	123	214	124	32	62	9	17	318
Dec-07	1,025	228	39	41	140	667	87	89	176	130	38	67	7	15	322
Nov-07	1,028	222	60	49	146	672	100	102	213	134	42	65	11	16	336
Oct-07	1,023	212	44	37	135	677	102	100	203	134	45	65	11	9	305
Sep-07	1,001	204	28	35	135	671	104	90	170	126	45	65	25	8	221
Aug-07	1,017	208	57	54	119	688	106	139	200	121			13	13	441
Jul-07	1,020	199	62	37	167	707	104	115	164	114			17	7	294
Jun-07	1,027	186	47	47	92	727	121	147	231	114			7	12	322
May-07	1,050	193	48	61	148	738	107	110	122	119			11	12	239
Apr-07	1,057	194	40	38	118	743	115	95	180	120			16	8	278
Mar-07	1,008	194	52	47	97	701	122	107	170	113			11	12	238



StateStat

Department of Juvenile Services

Region OT

Total Overtime Hours	TWO-WEEK REPORTING PERIODS - ENDING:					% Change	Target	FY2011 Year To Date			
	6/14/11	6/28/11	7/12/11	7/26/11	Average			Min	Max	Total	
State Totals	17,984	16,156	19,348	18,100	-6.5%	11,323	16,595	14,575	19,868	431,482	
Administration	67	135	113	106	-5.6%		79	13	184	2,052	
Community Supervision	2,595	2,353	2,368	2,352	-0.7%		1,832	1,511	2,595	47,641	
Transportation	1,180	973	1,214	1,251	3.1%		1,105	664	1,424	28,738	
Facilities	14,143	12,696	15,654	14,390	-8.1%		13,579	11,957	16,360	353,052	
Headquarters	32	84	96	95	-0.4%	102	54	5	158	1,396	
Secretary	0	0	0	0	0.0%		0	0	0	0	
Departmental Support	23	43	87	51	-41.6%		16	1	48	427	
Office of Administration	9	41	8	44	432.5%		37	0	154	969	
Baltimore City	6,317	5,068	6,003	5,792	-3.5%	3,694	5,353	4,512	6,317	139,170	
Administration	0	0	0	0	0.0%		7	0	35	188	
Community Supervision	1,692	1,381	1,416	1,359	-4.0%		1,134	899	1,692	29,496	
Transportation	890	703	955	1,048	9.8%		831	512	1,098	21,608	
BCJJC	3,717	2,958	3,450	3,251	-5.8%		3,310	2,573	3,816	86,069	
MYRC	0	0	0	0	0.0%		12	0	88	322	
WDSH	17	26	182	133	-26.9%		57	17	117	1,487	
Central Region	3,550	2,927	3,782	3,092	-18.2%	2,059	3,660	2,927	4,865	95,162	
Administration	8	7	7	0	-100.0%		7	0	21	181	
Community Supervision	343	244	332	291	-12.3%		338	232	752	8,799	
Transportation	53	28	32	0	-100.0%		28	0	59	719	
Hickey	3,145	2,648	3,412	2,801	-17.9%		3,287	2,613	4,468	85,463	
Western Region	2,154	2,396	2,914	2,739	-6.0%	1,172	1,812	1,287	2,396	47,108	
Administration	0	9	2	0	-100.0%		4	0	17	101	
Community Supervision	19	13	30	18	-41.7%		20	7	42	512	
Transportation	40	56	54	21	-61.9%		35	5	74	900	
Youth Centers	1,066	1,089	1,635	1,299	-20.6%		684	318	1,089	17,782	
Victor Cullen	590	622	758	873	15.2%		613	351	936	15,942	
Western Maryland CC	438	607	436	529	21.4%		457	202	683	11,871	
Eastern Region	713	730	570	810	42.0%	303	668	446	874	17,375	
Administration	0	0	0	0	0.0%		0	0	0	0	
Community Supervision	115	231	140	203	45.2%		67	5	231	1,743	
Transportation	90	82	54	98	82.2%		118	0	189	3,077	
Carter	251	231	134	162	21.2%		167	41	287	4,352	
Lower Shore	257	187	243	348	42.9%		316	187	460	8,203	
Southern Region	1,165	931	1,175	1,179	0.3%	444	1,103	794	1,287	28,671	
Administration	0	0	0	0	0.0%		0	0	8	8	
Community Supervision	67	38	94	28	-70.6%		39	3	126	1,010	
Transportation	45	31	40	47	17.5%		44	0	77	1,145	
Waxter	1,054	861	1,041	1,104	6.0%		1,020	710	1,221	26,508	
Metro Region	4,055	4,021	4,807	4,393	-8.6%	3,548	3,946	3,260	4,580	102,601	
Administration	27	36	9	11	30.2%		7	0	36	178	
Community Supervision	360	446	357	454	27.4%		234	28	570	6,080	
Transportation	62	73	80	38	-52.8%		50	0	141	1,290	
Noyes	1,059	1,167	1,167	1,164	-0.3%		924	379	1,298	24,024	
Cheltenham	2,547	2,300	3,196	2,726	-14.7%		2,732	2,261	3,177	71,029	

Note: Effective July 2007, bi-weekly data are reported.



StateStat
Department of Juvenile Services
Region OT

Callout Hours	TWO-WEEK REPORTING PERIODS				% Change	FY2011 Year To Date			
	4/5/11	4/19/11	5/3/11	5/17/11		Average	Min	Max	Total
Total All Facilities	2600	2792	2000	2120	6.0%	2,560	1,968	3,072	58,872
BCJJC	592	784	640	536	-16.3%	680	448	1,016	14,288
Cheltenham	664	712	504	696	38.1%	657	368	928	15,112
LESCC	72	104	120	56	-53.3%	75	16	136	1,720
WMC	136	56	48	136	183.3%	50	8	136	1,144
Carter	16	8	16	40	150.0%	24	8	48	544
Noyes		136			0.0%	266	136	384	3,728
Hickey	384	376			0.0%	429	264	664	9,016
Waxter	160	192	168	152	-9.5%	178	16	336	4,104
Schaefer	8	32	24	24	0.0%	21	0	64	480
Youth Centers	400	288	248	216	-12.9%	206	64	400	4,744
Victor Cullen	168	104	232	264	13.8%	174	96	264	3,992



Department of Juvenile Services
Personnel

STAFFING

	MONTHLY REPORTING PERIODS (LAST DAY)				% Change	FY2011 Year To Date			
	Feb-11	Mar-11	Apr-11	May-11		Average	Minimum	Maximum	Total
Community Services Direct Care Staff									
Mandated CMS Staff PINS*	436.5	433.5	433.5	433.0	-0.1%	445	433	461	
Mandated CMS Staff (Incl. Contractual)*	415.5	414.5	412.5	409.0	-0.8%	422	409	430	
Last Day of Month Youth Count	8,449	8,378	8,364	8,370	0.1%	8520	8238	9271	
Caseload: Staff Ratio (based on Youth)	20.3	20.2	20.3	20.5	0.9%	20.2	19.6	21.6	
Facility Direct Care Staff									
Total Facility Resident Advisors as of last day	459.0	453.0	452.0	444.0	-1.8%	449	435	461	
PIN Vacancies (FTE)	63.0	78.0	77.0	80.0	3.9%	51	27	80	
Contractual Vacancies (FTE) *	1.0	-9.0	-5.0	1.0	-120.0%	7	-9	19	
Total Vacancies (FTE)	64.0	69.0	72.0	81.0	12.5%	58	38	81	
Accident Leave (Days)	383	390			0.0%	261	68	390	
DIRECT CARE STAFF: RESIDENT RATIO Total	7.37	7.93	8.19	7.80	-4.8%	7.71	7.16	8.32	
BCJJC	7.97	8.39	7.46	6.97	-6.6%	7.63	6.69	8.46	
Cheltenham	6.94	8.07	9.17	8.26	-9.9%	8.58	6.92	10.35	
LESCC	8.63	9.02	11.05	13.77	24.6%	9.13	6.19	13.77	
WMC	8.50	7.52	8.22	8.40	2.2%	7.11	4.85	8.50	
Carter	4.71	5.49	5.49	5.10	-7.1%	5.33	4.25	6.38	
Noyes	6.23	7.57	8.72	7.82	-10.3%	7.86	4.81	10.96	
Hickey	7.46	8.60	9.42	9.10	-3.4%	7.72	6.25	9.42	
Waxter	5.63	6.04	7.06	5.67	-19.7%	7.63	5.63	10.63	
Schaefer	5.10	5.56	5.56	4.25	-23.6%	4.04	1.39	10.20	
Victor Cullen	5.22	5.32	5.10	4.87	-4.5%	5.00	4.37	5.44	
Youth Centers	9.50	9.72	9.92	9.73	-1.9%	9.39	8.93	9.92	
Violations of Conduct - Total	41	39	40	31	-22.5%	35	21	51	382
Non-Certified	3	3	0	1	0.0%	1	0	3	12
Certified	44	42	40	32	-20.0%	35	21	49	384
Accident Leave - FROI to IWIF									
Administration	2	0	0	38	0.0%	0	0	2	4
Community Services	6	4	3	2	-33.3%	3	0	5	30
Facilities	38	32	27	36	33.3%	21	11	29	248



Department of Juvenile Services
Personnel

Sick Leave	TWO-WEEK REPORTING PERIODS				% Change	FY2010 Year To Date			
	11/16/2010	11/30/2010	12/14/2010	12/28/2010		Average	Minimum	Maximum	Total
SICK LEAVE TOTAL DAYS*	1,225	1,157	1,453	1,286	-11.5%	1,567	1,293	1,863	40,749
Administration	815	653	915	726	-20.7%	1,064	131	1,828	27,668
Community Services	3,923	3,391	4,471	3,169	-29.1%	3,862	509	5,998	100,399
Facilities	5,064	5,215	6,238	5,186	-16.9%	5,520	773	7,493	143,514
Headquarters	631	475	727	563	-22.6%	1,004	653	1,523	26,098
Secretary	24	11	11	54	386.4%	43	0	136	1,128
Departmental Support	474	336	568	417	-26.7%	808	539	1,251	21,014
Office of Administration	133	129	148	93	-37.3%	152	46	386	3,956
Baltimore City	2,044	1,837	2,797	2,034	-27.3%	2,756.4	2,055.1	3,817.9	71,666.3
Administration	24	4	100	2	-98.0%	12	0	52	301
Community Supervision	1,456	1,333	1,806	1,208	-33.1%	1,575	1,224	2,134	40,943
BCJJC	500	396	721	612	-15.1%	1,027	106	1,555	26,701
MYRC	0	0	0	0	0.0%	0	0	0	0
WDSH	64	104	171	212	24.0%	143	17	1,191	3,722
Central Region	1,620	1,730	1,815	1,916	5.5%	1,861	1,468	2,737	48,392
Administration	14	26	3	8	166.7%	30	0	101	771
Community Supervision	515	493	707	664	-6.1%	567	300	959	14,745
Hickey	1,091	1,211	1,106	1,245	12.5%	1,273	836	1,753	28,011
Western Region	1,509	1,467	1,588	1,592	0.2%	1,833.8	1,324.2	2,386.2	47,677.8
Administration	59	74	69	84	21.2%	112	32	229	2,917
Community Supervision	212	210	206	186	-9.7%	196	87	378	5,104
Youth Centers	885	669	671	656	-2.2%	1,086	647	1,517	23,890
Victor Cullen	353	514	643	667	3.8%	427	148	593	9,398
Eastern Region	1,092	852	901	766	-15.0%	852.4	589.4	1,165.3	22,162.9
Administration	48	16	0	21	0.0%	67	0	188	1,744
Community Supervision	484	358	286	375	31.2%	395	203	622	8,693
Carter	103	155	246	185	-24.6%	162	28	290	3,564
Lower Shore	457	324	370	185	-50.0%	258	66	499	5,684
Southern Region	943	924	977	889	-9.0%	1,046	625	1,487	27,189
Administration	29	55	15	44	200.0%	19	0	47	421
Community Supervision	395	218	373	278	-25.6%	478	212	809	10,523
Waxter	520	652	589	568	-3.6%	526	350	710	11,579
Metro Region	1,488	1,637	2,250	2,114	-6.1%	2,376.7	1,639.0	3,459.3	61,795.5
Administration	11	4	2	5	155.0%	21	0	98	466
Community Supervision	387	443	525	427	-18.7%	612	355	874	13,470
Noyes	383	512	675	697	3.3%	482	305	636	10,608
Cheltenham	708	678	1,048	984	-6.1%	1,288	825	1,857	28,341

*Note: Overall totals are reported in Days (8 hr days), but the regional breakdown is by hours.

Department of Juvenile Services
StateStat w Per Diems

8/18/2011

Reporting Period: June 2011

MBE CONTRACT ACTIVITY

Goal Achieved: 6.83% # Waivers requested: # Waivers granted: **Goal Achieved: 13.78%** # Waivers requested: # Waivers granted:

PROCUREMENT/CONTRACT AWARDS	CURRENTLY AVAILABLE PERIOD (Month, Year)						YEAR-TO-DATE					
	Agency Total	Ethnic	Women	Disabled / Non-Profit / Sheltered Workshop	Total MBE/WBE	%	Agency Total	Ethnic	Women	Disabled / Non-Profit / Sheltered Workshop	Total MBE/WBE	%
Payment Totals	\$9,166,279.60	\$165,763.73 1.81%	\$330,281.58 3.60%	\$663,670.61 7.24%	\$1,159,715.92	12.65%	\$88,232,721.71	\$1,809,544.88 \$0.02	\$2,822,431.04 \$0.03	\$5,300,525.56 \$0.06	\$9,932,501.48	11.26%
Awards Totals	\$16,875,436.65	\$56,192.28 0.33%	\$444,987.05 2.64%	\$651,922.21 3.86%	\$1,153,101.54	6.83%	\$117,743,497.74	\$967,129.00 0.82%	\$2,204,901.00 1.87%	\$13,056,736.00 11.09%	\$16,228,766.00	13.78%
Architectural and Engineering	\$0.00				\$0.00		\$0.00	\$0.00	\$0.00	\$0.00	\$0.00	
Construction	\$0.00				\$0.00		\$0.00	\$0.00	\$0.00	\$0.00	\$0.00	
Construction Related	\$0.00				\$0.00		\$0.00	\$0.00	\$0.00	\$0.00	\$0.00	
Maintenance	\$92,643.45	\$0.00	\$0.00	\$0.00	\$0.00	0.00%	\$596,209.75	\$28,031.00	\$1,269.00	\$13,520.00	\$42,820.00	7.18%
Services	\$9,704.00	\$2,304.00	\$0.00	\$0.00	\$2,304.00	23.74%	\$2,432,034.80	\$62,306.00	\$91,069.00	\$19,605.00	\$172,980.00	7.11%
Supplies and Equipment	\$96,374.70	\$0.00	\$9,837.00	\$0.00	\$9,837.00	10.21%	\$1,352,070.34	\$54,411.00	\$31,758.00	\$8,116.00	\$94,285.00	6.97%
IT Services	\$8,482.00	\$0.00	\$0.00	\$0.00	\$0.00	0.00%	\$600,036.65	\$0.00	\$0.00	\$0.00	\$0.00	0.00%
IT Supplies and Equipment	\$534,569.50	\$0.00	\$247,165.00	\$0.00	\$247,165.00	46.24%	\$3,982,838.99	\$1,080.00	\$247,165.00	\$0.00	\$248,245.00	6.23%
Human, Cultural, Social & Educational	\$8,772,096.00	\$0.00	\$0.00	\$0.00	\$0.00	0.00%	\$36,350,171.40	\$178,061.00	\$37,581.00	\$7,871,080.00	\$8,086,722.00	22.25%
Corporate Credit Card	\$400,298.00	\$250.00	\$50,792.00	\$17,278.00	\$68,320.00	17.07%	\$3,983,019.00	\$14,249.00	\$546,528.00	\$91,157.00	\$651,934.00	16.37%
Direct Vouchers	\$6,961,269.00	\$53,638.28	\$137,193.05	\$634,644.21	\$825,475.54	11.86%	\$68,447,116.81	\$628,991.00	\$1,249,531.00	\$5,053,258.00	\$6,931,780.00	10.13%

Notes: (1) MBE data consist of MBE prime and MBE subcontract awards and payments, where applicable. (2) The "Women" category may include contract awards and payments to dually-certified MBEs.

SBR INDICATORS	Agency Total	Total SBR	# Designated Procurements	%	Agency Total	Total SBR	# Designated Procurements	%
Payment Totals	\$10,318,058	\$310,275	0	3.01%	\$96,212,860	\$2,880,054	0	2.99%

Department of Juvenile Services
StateStat wo Per Diems

8/18/2011

Reporting Period: June 2011

Secretary
 Appointed March 2011

MBE CONTRACT ACTIVITY

Goal Achieved: **4.89%** # Waivers requested: # Waivers granted: Goal Achieved: **18.12%** # Waivers requested: # Waivers granted:

PROCUREMENT/CONTRACT AWARDS	CURRENTLY AVAILABLE PERIOD (Month, Year)						YEAR-TO-DATE					
	Agency Total	Ethnic	Women	Disabled / Non-Profit / Sheltered Workshop	Total MBE/WBE	%	Agency Total	Ethnic	Women	Disabled / Non-Profit / Sheltered Workshop	Total MBE/WBE	%
Payment Totals	\$16,875,437.04	\$165,763.73 0.98%	\$330,281.58 1.96%	\$663,670.61 3.93%	\$1,159,715.92	6.87%	\$117,781,462.80	\$1,809,544.88 \$0.02	\$2,822,430.49 \$0.02	\$5,300,525.56 \$0.05	\$9,932,500.93	8.43%
Awards Totals	\$10,813,151.61	\$56,192.28 0.52%	\$444,987.05 4.12%	\$27,252.43 0.25%	\$528,431.76	4.89%	\$60,695,941.92	\$788,243.00 1.30%	\$1,706,229.00 2.81%	\$8,505,811.90 14.01%	\$11,000,283.90	18.12%
Architectural and Engineering	\$0.00	\$0.00	\$0.00	\$0.00	\$0.00		\$0.00	\$0.00	\$0.00	\$0.00	\$0.00	
Construction	\$0.00	\$0.00	\$0.00	\$0.00	\$0.00		\$0.00	\$0.00	\$0.00	\$0.00	\$0.00	
Construction Related	\$0.00	\$0.00	\$0.00	\$0.00	\$0.00		\$0.00	\$0.00	\$0.00	\$0.00	\$0.00	
Maintenance	\$92,643.45	\$0.00	\$0.00	\$0.00	\$0.00	0.00%	\$596,209.00	\$28,031.00	\$1,269.00	\$0.00	\$29,300.00	4.91%
Services	\$9,704.00	\$2,304.00	\$0.00	\$0.00	\$2,304.00	23.74%	\$2,432,035.00	\$62,306.00	\$91,069.00	\$19,605.00	\$172,980.00	7.11%
Supplies and Equipment	\$96,374.70	\$0.00	\$9,837.00	\$0.00	\$9,837.00	10.21%	\$1,352,071.00	\$54,411.00	\$31,758.00	\$8,116.00	\$94,285.00	6.97%
IT Services	\$8,482.00	\$0.00	\$0.00	\$0.00	\$0.00	0.00%	\$600,037.00	\$0.00	\$0.00	\$0.00	\$0.00	0.00%
IT Supplies and Equipment	\$534,569.50	\$0.00	\$247,165.00	\$0.00	\$247,165.00	46.24%	\$3,982,840.00	\$1,080.00	\$247,165.00	\$0.00	\$248,245.00	6.23%
Human, Cultural, Social & Educational	\$8,772,096.00	\$0.00	\$0.00	\$0.00	\$0.00	0.00%	\$36,350,171.00	\$178,061.00	\$37,581.00	\$7,871,080.00	\$8,086,722.00	22.25%
Corporate Credit Card	\$400,298.00	\$250.00	\$50,792.00	\$17,278.00	\$68,320.00	17.07%	\$4,020,983.00	\$13,851.00	\$546,798.00	\$91,157.00	\$651,806.00	16.21%
Direct Vouchers	\$898,983.96	\$53,638.28	\$137,193.05	\$9,974.43	\$200,805.76	22.34%	\$11,361,595.92	\$450,503.00	\$750,589.00	\$515,853.90	\$1,716,945.90	15.11%

Notes: (1) MBE data consist of MBE prime and MBE subcontract awards and payments, where applicable. (2) The "Women" category may include contract awards and payments to dually-certified MBEs.

SBR INDICATORS	Agency Total	Total SBR	# Designated Procurements	%	Agency Total	Total SBR	# Designated Procurements	%
Payment Totals	\$10,318,058	\$310,275	0	3.01%	\$96,212,860	\$2,880,014	0	2.99%



StateStat

Department of Juvenile Services

Homicides

Juvenile Homicides - Statewide	Monthly Reporting Periods				'10 to '11 YTD % Change	Year to Date			'09 to '10 % Change	Total			
	Apr-11	May-11	Jun-11	Jul-11		2011	2010	2009		2010	2009	2008	2007
State Police count of youth killed, including custodials (Ages 0-17)	2	4	4	5	13%	17	15	22	-23%	31	40	50	55
Non-Custodial youth killed (7-17)	1	4	2	4	9%	12	11	11	0%	20	20	37	41
Custodial murders, incl. infanticide or relative killings, and juv. homicides ages 0-6.	1	0	2	1	25%	5	4	11	-42%	11	19	15	13
Youth killed while under DJS supervision (7-21), including open warrants	0	0	0	0	-60%	2	5	6	-50%	7	14	17	18
Ages 7-17	0	0	0	0	-50%	2	4	5	0%	6	6	9	19
Ages 18-21	0	0	0	0	-100%	0	1	1	-88%	1	8	8	5
VPI/OSK Youth killed	0	0	0	0	NC	1	0	1	-100%	0	1	1	NA
Youth killed who had any contact with DJS (Ages 7-17)	1	1	1	2	0%	9	9	10	-13%	14	16	22	19

Juvenile Homicides Baltimore City	Monthly Reporting Periods				'10 to '11 YTD %Change	Year to Date			'09 to '10 % Change	Total			
	Apr-11	May-11	Jun-11	Jul-11		2011	2010	2009		2010	2009	2008	2007
State Police count of youth killed, incl. custodials (ages 0-17)	0	2	1	2	-14%	6	7	8	-14%	12	14	30	25
Non-Custodial youth killed (7-17)	0	2	1	2	20%	6	5	8	-38%	8	13	23	23
Custodial murders, incl. infanticide or relative killings, and ages 0-6 homicides	0	0	0	0	-100%	0	2	0	300%	4	1	7	2
Youth killed while under DJS sup. ages (7-21), incl. open warrants	0	0	0	0	-33%	2	3	6	-67%	4	12	9	10
Ages 7-17	0	0	0	0	-33%	2	3	5	-33%	4	6	5	6
Ages 18-21	0	0	0	0	NC	0	0	1	-100%	0	6	4	4
VPI/OSK Youth killed	0	0	0	0	NC	1	0	1	-100%	0	1	1	0
Youth killed who had any contact with DJS (Ages 7-17)	0	1	0	0	-20%	4	5	8	-36%	7	11	15	Unkn.
City Police count of non-fatal shootings, incl. custodials (Age 0-17)	1	3	3	5	-6%	16	17	14	-35%	34	52	89	86
Non-fatal shootings of youth under DJS supervision (ages 7-17), including youth with open warrants	0	1	1	1	-29%	5	7	10	-25%	15	20	30	47



StateStat

Department of Juvenile Services

VPI

OSK	Monthly Reporting Periods				% Change	FY2011 Year to Date		
	May-11	Jun-11	Jul-11	Aug-11		Average	Minimum	Maximum
Spaces	200	200	200	200	0.0%	200	200	200
Spaces Filled	200	199	190	187	-1.6%	195	177	200

GPS Tracking - First of Month Count	May-11	Jun-11	Jul-11	Aug-11	% Change	Average	Minimum	Maximum
State Total	174	191	171	181	5.8%	177	157	208
Baltimore City	89	94	77	78	1.3%	84	70	105
Central Region	11	16	18	19	5.6%	19	11	28
Baltimore County	6	10	15	14	-6.7%	13	6	26
Metro Region	51	57	47	52	10.6%	47	34	57
Montgomery County	21	15	11	8	-27.3%	19	14	23
Prince George's County	30	41	36	44	22.2%	28	19	41
Southern Region	16	16	16	18	12.5%	16.25	12	21
Western Region	2	3	4	4	0.0%	4.50	2	7
Eastern Region	5	5	9	10	11.1%	6.25	3	11
Statewide GPS VPI Youth	132	140	122	125	2.5%	104	76	140



StateStat

Department of Juvenile Services

VPI

Violence Prevention Initiative- Statewide	May-11	Jun-11	Jul-11	Aug-11	% Change	Average	Minimum	Maximum
Under Supervision*	580	574	582	568	-2.4%	549	456	588
Baltimore City	201	206	207	193	-6.8%	201	189	207
Level I	77	87	83	64	-22.9%	84	70	97
Level II	102	96	98	106	8.2%	88	71	108
Level III	22	23	26	23	-11.5%	29	22	39
Central Region	85	89	90	89	-1.1%	97	85	106
Level I	10	24	23	25	8.7%	24	10	44
Level II	47	48	52	52	0.0%	53	45	62
Level III	28	17	15	12	-20.0%	20	14	28
Metro Region	180	175	183	175	-4.4%	155	89	185
Level I	36	41	53	54	1.9%	54	29	73
Level II	64	57	56	56	0.0%	46	30	69
Level III	80	72	74	65	-12.2%	55	26	87
Southern Region	84	74	77	83	7.8%	67	49	84
Level I	23	22	24	25	4.2%	22	15	28
Level II	29	28	31	32	3.2%	27	15	36
Level III	32	24	22	26	18.2%	18	10	33
Western Region	9	10	10	10	0.0%	7	5	10
Level I	4	5	5	5	0.0%	3	1	5
Level II	2	2	3	3	0.0%	2	1	3
Level III	3	3	2	2	0.0%	2	0	3
Eastern Region	21	20	15	18	20.0%	22	18	25
Level I	4	4	1	4	300.0%	10	4	15
Level II	10	8	8	8	0.0%	7	4	10
Level III	7	8	6	6	0.0%	5	2	8

* Note: VPI under Supervision youths include only probation and aftercare and excludes AWOL, Pending Placement, Detained Juvenile and Adult.

Note - VPI Number reflects youth in program on first day of Month.



StateStat

Department of Juvenile Services

VPI

Violence Prevention Initiative- Arrests

VPI Youths Rearrested	Monthly Reporting Periods				% Change	FY2011 Year to Date		
	Mar-11	Apr-11	May-11	Jun-11		Average	Minimum	Maximum
Total VPI Youth, (Incl. Placement, AWOL)	1272	1270	1243	1220	-1.9%	1178	1023	1272
Youth Arrested	67	57	53	67	26.4%	55	26	71
Arrest Rate	5.3%	4.5%	4.3%	5.5%	28.8%	6%	3%	7%
Baltimore City - VPI Youth	591	590	556	535	-3.8%	489	450	520
Youth Arrested	34	28	30	45	50.0%	40	18	56
Arrest Rate	6%	5%	5%	8%	56%	7%	4%	9%
Central Region- VPI Youth	150	143	136	142	4.4%	93	74	120
Youth Arrested	9	4	9	4	-55.6%	6	2	10
Arrest Rate	6%	3%	7%	3%	-57%	6%	2%	9%
Metro Region - VPI Youth	327	331	340	338	-0.6%	137	105	176
Youth Arrested	16	18	16	14	-12.5%	4	1	9
Arrest Rate	5%	5%	5%	4%	-12%	3%	1%	7%
Southern Region - VPI Youth	139	143	143	138	-3.5%	64	52	88
Youth Arrested	6	5	1	1	0.0%	3	2	6
Arrest Rate	4%	3%	1%	1%	4%	5%	2%	8%
Western Region - VPI Youth	25	26	28	30	7.1%	27	19	37
Youth Arrested	1	0	0	2	0.0%	1	0	3
Arrest Rate	4%	0%	0%	7%	0%	2%	0%	12%
Eastern Region - VPI Youth	40	37	40	37	-7.5%	32	28	36
Youth Arrested	1	2	0	1	0.0%	1	0	5
Arrest Rate	3%	5%	0%	3%	0%	3%	0%	17%

Youths active in VPI at any point during the month are counted once, regardless of multiple arrests



StateStat

Department of Juvenile Services

VPI

Violence Prevention Initiative- New Charges

						FY2011 Year to Date		
	Mar-11	Apr-11	May-11	Jun-11	% Change	Average	Minimum	Maximum
Total VPI Youth, (Incl. Placement, AWOL)	1272	1270	1243	1220	-1.9%	1178	1023	1272
Statewide Overall Offense Count	83	71	66	55	-16.7%	65	38	88
Statewide - Adult Offense Count	23	16	14	27	92.9%	17	11	27
Statewide - Juvenile Felony Count	27	17	13	16	23.1%	17	6	27
Statewide - Juvenile Misdem. Count	33	38	39	39	0.0%	40	28	56
Rate of All Offenses	7%	4%	5%	5%	-15.1%	5%	4%	7%
Rate of Adult Offenses	1.8%	1.3%	1.1%	2.2%	96%	1.4%	0.9%	1.8%
Rate of Juvenile Felonies	2.1%	1.3%	1.0%	1.3%	25.4%	1.5%	0.6%	2.1%
Rate of Juvenile Misdemeanors	2.6%	3.0%	3.1%	3.2%	1.9%	3.4%	2.4%	4.6%
Baltimore City - Adult Arrests	11	8	5	13	160.0%	9	4	13
Baltimore City - Juvenile Felonies	14	10	8	14	75.0%	10	5	14
Baltimore City - Juvenile Misdemeanors	12	12	24	28	16.7%	19	12	28
Central Region - Adult Arrests	4	0	1	0	-100.0%	1	0	4
Central Region - Juvenile Felonies	1	0	2	1	-50.0%	2	0	5
Central Region - Juvenile Misdemeanors	5	4	8	5	-37.5%	6	1	11
Metro Region - Adult Arrests	7	6	8	13	62.5%	6	1	13
Metro Region - Juvenile Felonies	7	7	3	0	-100.0%	4	0	7
Metro Region - Juvenile Misdemeanors	6	14	6	1	-83.3%	8	1	15
Southern Region - Adult Arrests	1	2	0	0	0.0%	1	0	3
Southern Region - Juvenile Felonies	5	0	0	0	0.0%	1	0	5
Southern Region - Juvenile Misdemeanors	7	4	1	3	200.0%	4	1	8
Western Region - Adult Arrests	0	0	0	1	0.0%	0	0	1
Western Region - Juvenile Felonies	0	0	0	1	0.0%	0	0	3
Western Region - Juvenile Misdemeanors	2	0	0	1	0.0%	1	0	6
Eastern Region - Adult Arrests	0	0	0	0	0.0%	0	0	1
Eastern Region - Juvenile Felonies	0	0	0	0	0.0%	0	0	0
Eastern Region - Juvenile Misdemeanors	1	4	0	1	0.0%	2	0	8

* Note: All new offenses are counted for any VPI youth, including under supervision, AWOL, Pending Placement, Detained Juvenile and Adult.



StateStat

Department of Juvenile Services

EBS Slots

Evidence Based Services Slots

Statewide Summary

Description	Bi-Weekly Reporting Periods						CY2011 Year To Date			
	1-Aug-2011	2-May-2011	27-May-2011	5-Jul-2011	1-Aug-2011	% Change	Average	Minimum	Maximum	Target
# of Contracted Slots	375	376	376	374	375	0.3%	372	364	377	
# of Slots Offline [staff vacancies or slots not online]	48	35	55	70	48	-31.4%	41	19	70	
# of Active Slots	327	341	321	304	327	7.6%	331	304	348	
% of Contracted Slots Active	87.2%	90.7%	85.4%	81.3%	87.2%	7.3%	89%	81%	95%	90%
# of Active Cases/Families	289	322	292	262	289	10.3%	296	262	322	
% of Active Slots Filled	88.4%	94.4%	91.0%	86.2%	88.4%	2.5%	89%	80%	94%	90%
# of Vacancies	40	19	29	42	40	-4.8%	35	19	68	
# of Youths Pending Admission	32	18	24	35	32	-8.6%	23	15	35	
# of Projected Active Youth/Families (Active Youth/Families plus Youth/Families pending admission)	321	340	316	297	321	8.1%	319	297	340	
% of Contracted Slots Filled	77.1%	85.6%	77.7%	70.1%	77.1%	10.1%	80%	70%	86%	90%

MST

Description	Total	NAFI Baltimore City Region	NAFI Central Region	CSI Baltimore County	CCMS Prince George's County
# of Contracted Slots	105	45	15	20	25
# of Slots Offline [staff vacancies or slots not online]	0	0	0	0	0
# of Active Slots	105	45	15	20	25
% of Contracted Slots Active	100.0%	100.0%	100.0%	100.0%	100.0%
# of Active Cases/Families	93	46	13	18	16
% of Active Slots Filled	88.6%	102.2%	86.7%	90.0%	64.0%
# of Vacancies	12	-1	2	2	9
# of Youths Pending Admission*	8	3	0	1	4
# of Active Cases (including Youths Pending Admission)	101	49	13	19	20
Projected Increase in Utilization (if the youths pending admissions are admitted)	96.2%	108.9%	86.7%	95.0%	80.0%
% of Contracted Slots Filled	88.6%	102.2%	86.7%	90.0%	64.0%



StateStat

Department of Juvenile Services

EBS Slots

FFT

Description	Total	Vision Quest Baltimore City	Vision Quest Central	Vision Quest Eastern Shore	Center for Children Southern	Vision Quest Metro
# of Contracted Slots	268	65	12	19	93	79
# of Slots Offline [staff vacancies or slots not online]	48	0	0	0	13	35
# of Active Slots	220	65	12	19	80	44
% of Contracted Slots Active	82.1%	100.0%	100.0%	100.0%	86.0%	55.7%
# of Active Cases/Families	195	50	12	19	80	34
% of Active Slots Filled	88.6%	76.9%	100.0%	100.0%	100.0%	77.3%
# of Vacancies	27	15	0	0	2	10
# of Youths Pending Admission*	24	7	0	2	0	15
# of Active Cases (including Youths Pending Admission)	219	57	12	21	80	49
% of Contracted Slots Filled	72.8%	76.9%	100.0%	100.0%	86.0%	43.0%

MTFC-A

Description	Total	CSI Baltimore County	NHS Montgomery County
# of Contracted Slots	2	1	1
# of Slots Offline [staff vacancies or slots not online]	0	0	0
# of Active Slots	2	1	1
% of Contracted Slots Active	100.0%	100.0%	100.0%
# of Active Cases/Families	1	1	0
% of Active Slots Filled	50.0%	100.0%	0.0%
# of Vacancies	1	0	1
# of Youths Pending Admission	0	0	0
# of Active Cases (including Youths Pending Admission)	1	1	0
Projected Increase in Utilization (if the youths pending admissions are admitted)	50.0%	100.0%	0.0%
% of Contracted Slots Filled	50.0%	100.0%	0.0%

* Note: "Pending Admission": Youth who have been

1. Determined to be appropriate for treatment based upon the provider's admission criteria;
2. Accepted by the provider and assigned to a therapist; and
3. Either contacted by the provider and waiting for the first visit/session or are in the process of being contacted by the provider to schedule the first visit/session.

Please note that treatment has not begun for these youths. Their families need to consent to treatment. The providers still have the opportunity to not admit them, if the provider discovers information that makes the family's referral inappropriate or if there are other reasons for non-admission (e.g. parents unwilling, parents unavailable, youth involved in a conflicting service).



Department of Juvenile Services
EBS Outcomes

Evidence Based Services

MST Model Adherence

Provider	County	Outcome	QUARTERLY REPORTING PERIODS				% Change	Last Four Quarters				National Avg. 2009
			FY11 Qtr 1	FY11 Qtr 2	FY11 Qtr 3	FY11 Qtr 4		Average	Minimum	Maximum	Target	
Overall		Youth Served	127	132	147	166	12.9%	143	127	166		
		Overall Adherence	0.72	0.82	0.72	0.78	8.3%	0.76	0.72	0.82	0.61	0.71
		% Families Completing 1+ TAM-R	54%	70%	72%	75%	4%	68%	54%	75%	100%	86%
		% Youth Report. Adherence> .61	76%	80%	68%	76%	12%	75%	68%	80%	80%	68%
CSI	Baltimore Co.	Youth Served	25	25	32	32	0.0%	29	25	32		
		Overall Adherence	0.82	0.94	0.81	0.88	8.6%	0.86	0.81	0.94	0.61	0.71
		% Families Completing 1+ TAM-R	60%	92%	69%	84%	22%	76%	60%	92%	100%	86%
		% Youth Report. Adherence> .61	87%	96%	82%	89%	9%	89%	82%	96%	80%	68%
CCMS	Prince George's Co.	Youth Served	na	26	31	35	12.9%	31	26	35		
		Overall Adherence	na	0.73	0.60	0.82	36.7%	0.72	0.60	0.82	0.61	0.71
		% Families Completing 1+ TAM-R	na	69%	68%	66%	-3%	68%	66%	69%	100%	86%
		% Youth Report. Adherence> .61	na	72%	57%	83%	46%	71%	57%	83%	80%	68%
NAFI	Baltimore City	Youth Served	89	63	63	76	20.6%	73	63	89		
		Overall Adherence	0.70	0.86	0.72	0.74	2.8%	0.76	0.70	0.86	0.61	0.71
		% Families Completing 1+ TAM-R	52%	67%	84%	68%	-19%	68%	52%	84%	100%	86%
		% Youth Report. Adherence> .61	71%	88%	66%	69%	5%	74%	66%	88%	80%	68%
	Central Region	Youth Served	13	18	21	23	9.5%	19	13	23		
		Overall Adherence	0.77	0.53	0.66	0.74	12.1%	0.68	0.53	0.77	0.61	0.71
		% Families Completing 1+ TAM-R	54%	56%	71%	100%	41%	70%	54%	100%	100%	86%
		% Youth Report. Adherence> .61	46%	40%	67%	70%	4%	56%	40%	70%	80%	68%



Department of Juvenile Services
EBS Outcomes

MST Outcomes			QUARTERLY REPORTING PERIODS				% Change	Last Four Quarters				National Avg.
Provider	County	Outcome	FY11 Qtr 1	FY11 Qtr 2	FY11 Qtr 3	FY11 Qtr 4		Average	Minimum	Maximum	Target	2009
Overall		Released w/Full Trmt. Opportunity	65	68	45	73	62.2%	63	45	73		
		% of youth living at home (88%=Green)	77%	85%	87%	88%	1.1%	84%	77%	88%	90%	86%
		% of youth in school/working (85%=Grn)	71%	71%	84%	82%	-2.4%	77%	71%	84%	90%	85%
		% of youth with no new arrests (85%=Grn)	74%	75%	82%	73%	-11.0%	76%	73%	82%	90%	82%
CSI	Baltimore Co.	Released w/Full Trmt. Opportunity	9	6	14	12	-33.3%	10	6	14		
		% of youth living at home	100%	83%	79%	83%	5.1%	86%	79%	100%	90%	86%
		% of youth in school/working	100%	50%	79%	83%	5.1%	78%	50%	100%	90%	85%
		% of youth with no new arrests	100%	100%	93%	83%	-10.8%	94%	83%	100%	90%	82%
CCMS	Prince George's Co.	Released w/Full Trmt. Opportunity	8	19	8	18	137.5%	13	8	19		
		% of youth living at home	100%	89%	88%	94%	6.8%	93%	88%	100%	90%	86%
		% of youth in school/working	88%	79%	88%	100%	13.6%	89%	79%	100%	90%	85%
		% of youth with no new arrests	100%	79%	50%	83%	66.0%	78%	50%	100%	90%	82%
NAFI	Baltimore City	Released w/Full Trmt. Opportunity	41	36	17	33	-12.2%	32	17	41		
		% of youth living at home	66%	86%	94%	82%	-12.8%	82%	66%	94%	90%	86%
		% of youth in school/working	56%	69%	88%	67%	-23.9%	70%	56%	88%	90%	85%
		% of youth with no new arrests	61%	69%	88%	64%	-27.3%	71%	61%	88%	90%	82%
	Central Region	Released w/Full Trmt. Opportunity	7	7	6	10	0.0%	8	6	10		
		% of youth living at home	86%	71%	83%	100%	20.5%	85%	71%	100%	90%	86%
		% of youth in school/working	100%	71%	83%	100%	20.5%	89%	71%	100%	90%	85%
		% of youth with no new arrests	86%	71%	83%	70%	-15.7%	78%	70%	86%	90%	82%



Department of Juvenile Services

EBS Outcomes

FFT Outcomes			QUARTERLY REPORTING PERIODS				% Change	Last Four Quarters			
Provider	County	Outcome	Q1 FY11	Q2 FY11	Q3 FY11	Q4 FY11		Average	Minimum	Maximum	Target
Overall		Total Discharges	106	89	132	151	14.4%	120	89	151	
		% of youth living at home	86%	82%	74%	86%	16.2%	82%	0.74	0.86	90%
		% of youth in school/working	77%	91%	83%	91%	10%	86%	77%	91%	90%
		% of youth with no new arrests	86%	85%	86%	90%	5%	87%	85%	90%	90%
Center for Children	Anne Arundel Co.	Total Discharges	17	9	17	25	47.1%	17	9	25	
		% of youth living at home	88%	100%	59%	88%	49.2%	84%	0.59	1.00	90%
		% of youth in school/working	94%	100%	77%	88%	14%	90%	77%	100%	90%
		% of youth with no new arrests	76%	78%	94%	100%	6%	87%	76%	100%	90%
	Calvert Co.	Total Discharges	9	5	4	6	50.0%	6	4	9	
		% of youth living at home	89%	100%	50%	83%	66.0%	81%	0.50	1.00	90%
		% of youth in school/working	67%	100%	75%	100%	33%	86%	67%	100%	90%
		% of youth with no new arrests	100%	100%	75%	100%	33%	94%	75%	100%	90%
	Charles Co.	Total Discharges	18	11	11	14	27.3%	14	11	18	
		% of youth living at home	78%	73%	73%	93%	27.4%	79%	0.73	0.93	90%
		% of youth in school/working	72%	82%	91%	100%	10%	86%	72%	100%	90%
		% of youth with no new arrests	83%	82%	100%	71%	-29%	84%	71%	100%	90%
	St Mary's Co.	Total Discharges	3	6	6	6	0.0%	5	3	6	
		% of youth living at home	67%	67%	83%	100%	20.5%	79%	0.67	1.00	90%
		% of youth in school/working	67%	67%	100%	83%	-17%	79%	67%	100%	90%
		% of youth with no new arrests	67%	83%	100%	83%	-17%	83%	67%	100%	90%
PLC	Prince George's Co.	Total Discharges	33	24	28	35	25.0%	30	24	35	
		% of youth living at home	91%	88%	89%	80%	-10.1%	87%	0.80	0.91	90%
		% of youth in school/working	67%	100%	86%	80%	-7%	83%	67%	100%	90%
		% of youth with no new arrests	97%	92%	89%	97%	9%	94%	89%	97%	90%
Vision Quest	Baltimore City	Total Discharges	na	3	35	35	0.0%	24	3	35	
		% of youth living at home	na	67%	66%	91%	37.9%	75%	0.66	0.91	90%
		% of youth in school/working	na	67%	71%	94%	32%	77%	67%	94%	90%
		% of youth with no new arrests	na	100%	80%	86%	7%	89%	80%	100%	90%
	Baltimore Co.	Total Discharges	0	1	2	3	50.0%	2	0	3	
		% of youth living at home	na	100%	100%	100%	0.0%	100%	1.00	1.00	90%
		% of youth in school/working	na	100%	100%	100%	0%	100%	100%	100%	90%
		% of youth with no new arrests	na	100%	100%	100%	0%	100%	100%	100%	90%
	Carroll Co.	Total Discharges	2	4	5	4	-20.0%	4	2	5	
		% of youth living at home	100%	100%	60%	50%	-16.7%	78%	0.50	1.00	90%
		% of youth in school/working	100%	100%	60%	100%	67%	90%	60%	100%	90%
		% of youth with no new arrests	100%	100%	60%	75%	25%	84%	60%	100%	90%
	Eastern Shore Counties	Total Discharges	14	10	9	12	33.3%	11	9	14	
		% of youth living at home	71%	80%	67%	67%	0.0%	71%	0.67	0.80	90%
		% of youth in school/working	79%	90%	100%	92%	-8%	90%	79%	100%	90%
		% of youth with no new arrests	64%	80%	78%	75%	-4%	74%	64%	80%	90%
	Harford Co.	Total Discharges	4	2	2	2	0.0%	3	2	4	
		% of youth living at home	100%	100%	100%	100%	0.0%	100%	1.00	1.00	90%
		% of youth in school/working	100%	100%	100%	100%	0%	100%	100%	100%	90%
		% of youth with no new arrests	100%	100%	100%	100%	0%	100%	100%	100%	90%
	Montgomery Co.	Total Discharges	5	11	12	6	-50.0%	9	5	12	
		% of youth living at home	100%	64%	83%	100%	20.5%	87%	0.64	1.00	90%
		% of youth in school/working	100%	91%	100%	100%	0%	98%	91%	100%	90%
		% of youth with no new arrests	80%	73%	83%	100%	20%	84%	73%	100%	90%
Prince George's Co.	Total Discharges	1	3	1	3	200.0%	2	1	3		
	% of youth living at home	100%	67%	100%	100%	0.0%	92%	0.67	1.00	90%	
	% of youth in school/working	100%	67%	100%	100%	0%	92%	67%	100%	90%	
	% of youth with no new arrests	100%	67%	100%	100%	0%	92%	67%	100%	90%	



StateStat

Department of Juvenile Services

Facility Incidents

RESIDENTIAL POPULATION	MONTHLY REPORTING PERIODS				FY2011 Year To Date			
	Mar-11	Apr-11	May-11	Jun-11	Average	Minimum	Maximum	Capac.
	Days	31	30	31	30			
TOTAL RESIDENTIAL POP.	1,410	1,441	1,494	1,456	1416	1375	1,494	
Total State-Run	679	710	695	646	673	644	715	793
BCJJC	122	124	117	114	120	114	124	120
Cheltenham	123	128	123	109	116	98	128	115
LESCC	24	26	27	21	23	19	27	24
WMC	27	27	27	23	25	21	28	24
Carter	15	15	14	10	13	10	15	27
Noyes	44	49	48	45	47	42	55	57
Hickey	74	86	90	77	79	69	90	72
Waxter	33	35	33	31	37	31	43	68
Schaefer	10	11	11	14	7	3	14	19
Youth Centers	161	163	163	162	162	160	163	164
Victor Cullen	46	47	42	41	44	41	47	48
Privately Operated	731	731	799	810	743	731	810	
In State Per Diems (Incl. Shelt.)	626	674	679	692	642	613	692	
Out of State Per Diems	127	121	120	118	117	108	127	

ESCAPES and AWOLS					FY2011 Year To Date				
	Mar-11	Apr-11	May-11	Jun-11	Average	Minimum	Maximum	Total	Target
Total Escapes	0	1	1	3	2	0	5	26	0
Total Youth AWOL over 24 Hrs*	34	28	29	35	28	13	35	165	0

* AWOL data shows the number of youth as of the first day of the month who have been AWOL over 24 hours.



Department of Juvenile Services Facility Incidents

Youth On Youth Assault with Injuries Requiring off-Grounds Medical Care - Rate PER 100 YD (includes primary and secondary incidents)

	MONTHLY REPORTING PERIODS				FY2011 Year To Date				
	Mar-11	Apr-11	May-11	Jun-11	Average	Minimum	Maximum	Total	Target
TOTAL Rate	0.03	0.02	0.01	0.01	0.02	0.01	0.03	0.12	0
Total State-Run	0.04	0.03	0.01	0.02	0.02	0.01	0.04	0.17	0
BCJJC	0.03	0.00	0.00	0.03	0.01	0.00	0.03	0.08	0
Cheltenham	0.13	0.03	0.03	0.06	0.06	0.03	0.13	0.44	0
LESCC	0.00	0.00	0.00	0.00	0.00	0.00	0.00	0.00	0
WMC	0.00	0.00	0.00	0.00	0.00	0.00	0.00	0.00	0
Carter	0.00	0.00	0.00	0.00	0.00	0.00	0.00	0.00	0
Noyes	0.15	0.14	0.00	0.00	0.04	0.00	0.15	0.28	0
Hickey	0.04	0.12	0.04	0.04	0.06	0.00	0.12	0.39	0
Waxter	0.00	0.00	0.00	0.00	0.00	0.00	0.00	0.00	0
Schaefer	0.00	0.00	0.00	0.00	0.00	0.00	0.00	0.00	0
Youth Centers	0.00	0.00	0.00	0.00	0.00	0.00	0.02	0.02	0
Victor Cullen	0.00	0.00	0.00	0.00	0.00	0.00	0.00	0.00	0
Privately Operated	0.01	0.01	0.01	0.00	0.01	0.00	0.02	0.08	0
In State Per Diems (Incl. Shelt.)	0.01	0.01	0.01	0.00	0.01	0.00	0.02	0.09	0
Out of State Per Diems	0.00	0.00	0.00	0.00	0.00	0.00	0.00	0.00	0

Youth On Youth Assault with Injuries Requiring off-Grounds Medical Care - Incident count (includes primary and secondary incidents)

	MONTHLY REPORTING PERIODS				FY2011 Year To Date				
	Mar-11	Apr-11	May-11	Jun-11	Average	Minimum	Maximum	Total	Target
TOTAL	11	9	5	5	7	5	11	52	0
Total State-Run	9	6	2	4	5	2	9	34	0
BCJJC	1	0	0	1	0	0	1	3	0
Cheltenham	5	1	1	2	2	1	5	16	0
LESCC	0	0	0	0	0	0	0	0	0
WMC	0	0	0	0	0	0	0	0	0
Carter	0	0	0	0	0	0	0	0	0
Noyes	2	2	0	0	1	0	2	4	0
Hickey	1	3	1	1	1	0	3	10	0
Waxter	0	0	0	0	0	0	0	0	0
Schaefer	0	0	0	0	0	0	0	0	0
Youth Centers	0	0	0	0	0	0	1	1	0
Victor Cullen	0	0	0	0	0	0	0	0	0
Privately Operated	2	3	3	1	3	1	4	18	0
In State Per Diems (Incl. Shelt.)	2	3	3	1	3	1	4	18	0
Out of State Per Diems	0	0	0	0	0	0	0	0	0



StateStat

Department of Juvenile Services

Facility Incidents

Youth On Youth Assault with Injuries Requiring On-Grounds Medical Care - Rate PER 100 YD (includes primary and secondary incidents)

	MONTHLY REPORTING PERIODS				FY2011 Year To Date				
	Mar-11	Apr-11	May-11	Jun-11	Average	Minimum	Maximum	Total	Target
TOTAL Rate	0.23	0.18	0.15	0.14	0.17	0.14	0.23	1.21	0
Total State-Run	0.42	0.33	0.31	0.30	0.33	0.29	0.42	2.29	0
BCJJC	0.58	0.54	0.52	0.47	0.53	0.47	0.58	3.70	0
Cheltenham	0.63	0.39	0.21	0.21	0.38	0.21	0.63	2.68	0
LESCC	0.40	0.65	0.47	0.16	0.31	0.00	0.65	2.17	0
WMC	0.35	0.12	0.12	0.59	0.30	0.12	0.59	2.12	0
Carter	0.00	0.00	0.00	0.00	0.00	0.00	0.00	0.00	0
Noyes	0.59	0.55	0.67	0.07	0.52	0.07	0.69	3.67	0
Hickey	0.44	0.39	0.54	0.57	0.42	0.33	0.57	2.93	0
Waxter	1.66	0.77	0.69	1.18	0.75	0.09	1.66	5.24	0
Schaefer	0.00	0.00	0.00	0.00	0.00	0.00	0.00	0.00	0
Youth Centers	0.02	0.06	0.04	0.06	0.07	0.02	0.18	0.46	0
Victor Cullen	0.07	0.07	0.00	0.16	0.09	0.00	0.31	0.62	0
Privately Operated	0.05	0.04	0.02	0.02	0.04	0.02	0.05	0.25	0
In State Per Diems (Incl. Shelt.)	0.05	0.04	0.02	0.02	0.04	0.02	0.05	0.27	0
Out of State Per Diems	0.03	0.00	0.00	0.00	0.01	0.00	0.05	0.08	0

Youth On Youth Assault with Injuries Requiring on-Grounds Medical Care - Incident count (includes primary and secondary incidents)

	MONTHLY REPORTING PERIODS				FY2011 Year To Date				
	Mar-11	Apr-11	May-11	Jun-11	Average	Minimum	Maximum	Total	Target
TOTAL	102	79	71	63	75	63	100	524	0
Total State-Run	91	71	66	58	67	55	89	468	0
BCJJC	22	20	19	16	19	16	22	134	0
Cheltenham	26	15	8	7	14	7	24	97	0
LESCC	3	5	4	1	2	0	5	16	0
WMC	3	1	1	4	2	1	4	15	0
Carter	0	0	0	0	0	0	0	0	0
Noyes	8	8	10	1	7	1	10	50	0
Hickey	10	10	15	13	10	7	15	72	0
Waxter	17	8	7	11	8	1	17	53	0
Schaefer	0	0	0	0	0	0	0	0	0
Youth Centers	1	3	2	3	3	1	9	23	0
Victor Cullen	1	1	0	2	1	0	4	8	0
Privately Operated	11	8	5	5	8	5	11	57	0
In State Per Diems (Incl. Shelt.)	10	8	5	5	8	5	10	53	0
Out of State Per Diems	1	0	0	0	0	0	2	3	0



StateStat

Department of Juvenile Services

Facility Incidents

Youth On Staff Assault - Rate PER 100 YD (includes primary and secondary incidents)

	MONTHLY REPORTING PERIODS				FY2011 Year To Date				
	Mar-11	Apr-11	May-11	Jun-11	Average	Minimum	Maximum	Total	Target
TOTAL Rate	0.17	0.12	0.12	0.13	0.12	0.07	0.17	1.41	0
Total State-Run	0.20	0.18	0.16	0.12	0.13	0.07	0.20	1.59	0
BCJJC	0.16	0.08	0.08	0.12	0.12	0.05	0.28	1.49	0
Cheltenham	0.13	0.05	0.00	0.06	0.06	0.00	0.23	0.76	0
LESCC	0.27	0.00	0.24	0.00	0.20	0.00	0.53	2.39	0
WMC	0.00	0.00	0.12	0.00	0.11	0.00	0.33	1.36	0
Carter	0.00	0.00	0.00	0.00	0.06	0.00	0.30	0.77	0
Noyes	0.22	0.14	0.13	0.22	0.12	0.00	0.22	1.45	0
Hickey	0.17	0.08	0.04	0.04	0.09	0.00	0.17	1.09	0
Waxter	1.76	1.63	1.38	0.54	0.70	0.00	1.76	8.38	0
Schaefer	0.00	0.00	0.00	0.00	0.00	0.00	0.00	0.00	0
Youth Centers	0.06	0.12	0.04	0.04	0.08	0.02	0.16	0.90	0
Victor Cullen	0.14	0.43	0.76	0.57	0.22	0.00	0.76	2.65	0
Privately Operated	0.14	0.07	0.08	0.13	0.10	0.07	0.14	1.26	0
In State Per Diems (Incl. Shelt.)	0.11	0.07	0.09	0.11	0.09	0.06	0.11	1.05	0
Out of State Per Diems	0.25	0.03	0.05	0.28	0.19	0.03	0.28	2.25	0

Youth On Staff Assault - Incident count (includes primary and secondary incidents)

	MONTHLY REPORTING PERIODS				FY2011 Year To Date				
	Mar-11	Apr-11	May-11	Jun-11	Average	Minimum	Maximum	Total	Target
TOTAL	74	54	56	56	51	30	74	609	0
Total State-Run	43	38	35	24	27	14	43	325	0
BCJJC	6	3	3	4	5	2	10	54	0
Cheltenham	5	2	0	2	2	0	8	27	0
LESCC	2	0	2	0	1	0	3	16	0
WMC	0	0	1	0	1	0	2	10	0
Carter	0	0	0	0	0	0	1	3	0
Noyes	3	2	2	3	2	0	3	20	0
Hickey	4	2	1	1	2	0	4	26	0
Waxter	18	17	14	5	8	0	18	90	0
Schaefer	0	0	0	0	0	0	0	0	0
Youth Centers	3	6	2	2	4	1	8	44	0
Victor Cullen	2	6	10	7	3	0	10	35	0
Privately Operated	31	16	21	32	24	16	32	284	0
In State Per Diems (Incl. Shelt.)	21	15	19	22	17	12	22	205	0
Out of State Per Diems	10	1	2	10	7	1	10	79	0



StateStat

Department of Juvenile Services

Facility Incidents

Group Disturbance - PER 100 YD (Incident count with associated incident)

	MONTHLY REPORTING PERIODS				FY2011 Year To Date				
	Mar-11	Apr-11	May-11	Jun-11	Average	Minimum	Maximum	Total	Target
TOTAL Group Disturbance Rate	0.03	0.04	0.03	0.04	0.03	0.01	0.04	0.30	0
Total State-Run	0.07	0.08	0.06	0.08	0.05	0.02	0.08	0.61	0
BCJJC	0.08	0.11	0.11	0.18	0.08	0.03	0.18	1.02	0
Cheltenham	0.16	0.23	0.11	0.24	0.10	0.00	0.24	1.17	0
LESCC	0.00	0.00	0.00	0.00	0.04	0.00	0.18	0.49	0
WMC	0.00	0.12	0.12	0.00	0.02	0.00	0.12	0.24	0
Carter	0.00	0.00	0.00	0.00	0.02	0.00	0.23	0.23	0
Noyes	0.07	0.00	0.13	0.00	0.05	0.00	0.17	0.65	0
Hickey	0.09	0.08	0.04	0.00	0.04	0.00	0.09	0.46	0
Waxter	0.10	0.10	0.00	0.00	0.07	0.00	0.19	0.80	0
Schaefer	0.00	0.00	0.00	0.24	0.02	0.00	0.24	0.24	0
Youth Centers	0.00	0.00	0.04	0.00	0.01	0.00	0.04	0.10	0
Victor Cullen	0.07	0.00	0.00	0.00	0.02	0.00	0.16	0.30	0
Privately Operated	0.00	0.00	0.00	0.00	0.00	0.00	0.01	0.03	0
In State Per Diems (Incl. Shelt.)	0.00	0.00	0.00	0.00	0.00	0.00	0.01	0.04	0
Out of State Per Diems	0.00	0.00	0.00	0.00	0.00	0.00	0.00	0.00	0

Group Disturbance - Raw Number for Calculation (Incident count with associated incident)

	MONTHLY REPORTING PERIODS				FY2011 Year To Date				
	Mar-11	Apr-11	May-11	Jun-11	Average	Minimum	Maximum	Total	Target
TOTAL	15	18	14	16	11	4	18	131	0
Total State-Run	14	17	14	15	10	3	17	124	0
BCJJC	3	4	4	6	3	1	6	37	0
Cheltenham	6	9	4	8	4	0	9	42	0
LESCC	0	0	0	0	0	0	1	3	0
WMC	0	1	1	0	0	0	1	2	0
Carter	0	0	0	0	0	0	1	1	0
Noyes	1	0	2	0	1	0	2	9	0
Hickey	2	2	1	0	1	0	2	11	0
Waxter	1	1	0	0	1	0	2	9	0
Schaefer	0	0	0	1	0	0	1	1	0
Youth Centers	0	0	2	0	0	0	2	5	0
Victor Cullen	1	0	0	0	0	0	2	4	0
Privately Operated	1	1	0	1	1	0	2	7	0
In State Per Diems (Incl. Shelt.)	1	1	0	1	1	0	2	7	0
Out of State Per Diems	0	0	0	0	0	0	0	0	0



StateStat

Department of Juvenile Services

Facility Incidents

Use of Seclusion - PER 100 YD (Incident count with associated incident)

	MONTHLY REPORTING PERIODS				FY2011 Year To Date				
	Mar-11	Apr-11	May-11	Jun-11	Average	Minimum	Maximum	Total	Target
TOTAL Rate of Seclusion Use	0.19	0.18	0.22	0.22	0.18	0.12	0.22	2.14	0
Total State-Run	0.31	0.31	0.43	0.45	0.32	0.21	0.45	3.79	0
BCJJC	1.14	1.24	1.37	1.73	1.21	0.81	1.73	14.57	0
Cheltenham	0.21	0.26	0.42	0.40	0.15	0.00	0.42	1.86	0
LESCC	0.00	0.13	0.12	0.16	0.25	0.00	1.07	3.01	0
WMC	0.12	0.00	0.47	0.29	0.22	0.00	0.53	2.66	0
Carter	0.00	0.00	0.47	0.00	0.08	0.00	0.47	0.92	0
Noyes	0.59	0.00	0.20	0.07	0.27	0.00	0.69	3.22	0
Hickey	0.09	0.19	0.14	0.22	0.14	0.00	0.28	1.71	0
Waxter	0.29	0.38	1.19	0.65	0.36	0.00	1.19	4.29	0
Schaefer	0.00	0.00	0.00	0.00	0.00	0.00	0.00	0.00	0
Youth Centers	0.00	0.00	0.00	0.00	0.00	0.00	0.00	0.00	0
Victor Cullen	0.00	0.00	0.00	0.08	0.01	0.00	0.08	0.16	0
Privately Operated	0.08	0.05	0.04	0.04	0.05	0.03	0.08	0.65	0
In State Per Diems (Incl. Shelt.)	0.08	0.04	0.04	0.02	0.04	0.02	0.08	0.54	0
Out of State Per Diems	0.10	0.06	0.08	0.11	0.10	0.03	0.20	1.25	0

Use of Seclusion - Raw Number for Calculation (Incident count with associated incident)

	MONTHLY REPORTING PERIODS				FY2011 Year To Date				
	Mar-11	Apr-11	May-11	Jun-11	Average	Minimum	Maximum	Total	Target
TOTAL	85	76	103	97	77	53	103	922	0
Total State-Run	65	66	92	88	65	43	92	774	0
BCJJC	43	46	50	59	44	30	59	530	0
Cheltenham	8	10	16	13	6	0	16	67	0
LESCC	0	1	1	1	2	0	7	20	0
WMC	1	0	4	2	2	0	4	20	0
Carter	0	0	2	0	0	0	2	4	0
Noyes	8	0	3	1	4	0	8	44	0
Hickey	2	5	4	5	3	0	6	41	0
Waxter	3	4	12	6	4	0	12	46	0
Schaefer	0	0	0	0	0	0	0	0	0
Youth Centers	0	0	0	0	0	0	0	0	0
Victor Cullen	0	0	0	1	0	0	1	2	0
Privately Operated	20	10	11	9	12	7	19	147	0
In State Per Diems (Incl. Shelt.)	16	8	8	5	9	5	16	104	0
Out of State Per Diems	4	2	3	4	4	1	7	44	0



Department of Juvenile Services Facility Incidents

Use of Restraint - PER 100 YD (Incident count with associated incident)

	MONTHLY REPORTING PERIODS				FY2011 Year To Date				
	Mar-11	Apr-11	May-11	Jun-11	Average	Minimum	Maximum	Total	Target
TOTAL Rate of Restraint Use	0.91	0.81	0.77	0.65	0.69	0.56	0.91	8.27	0
Total State-Run	1.51	1.39	1.39	1.10	1.11	0.76	1.51	13.28	0
BCJJC	1.56	1.59	1.35	1.64	1.49	1.08	1.64	17.86	0
Cheltenham	2.08	1.67	1.66	1.13	1.17	0.39	2.08	13.99	0
LESCC	1.47	1.04	1.06	0.49	1.17	0.49	2.28	14.03	0
WMC	0.83	0.75	1.42	1.33	1.28	0.75	2.24	15.41	0
Carter	0.66	1.36	3.50	0.00	1.29	0.00	3.50	15.43	0
Noyes	2.30	1.16	1.69	0.52	1.34	0.52	2.57	16.11	0
Hickey	0.96	0.97	1.04	0.78	0.76	0.44	1.04	9.13	0
Waxter	6.35	5.94	5.44	3.76	3.15	1.22	6.35	37.83	0
Schaefer	0.00	0.00	0.31	0.24	0.05	0.00	0.31	0.54	0
Youth Centers	0.32	0.35	0.28	0.43	0.40	0.16	0.62	4.85	0
Victor Cullen	1.75	2.27	2.06	2.20	1.24	0.42	2.27	14.87	0
Privately Operated	0.35	0.24	0.23	0.29	0.31	0.23	0.38	3.73	0
In State Per Diems (Incl. Shelt.)	0.22	0.17	0.22	0.22	0.21	0.13	0.28	2.58	0
Out of State Per Diems	0.91	0.47	0.24	0.73	0.80	0.24	0.99	9.59	0

Use of Restraints - Raw Number for Calculation (Incident count with associated incident)

	MONTHLY REPORTING PERIODS				FY2011 Year To Date				
	Mar-11	Apr-11	May-11	Jun-11	Average	Minimum	Maximum	Total	Target
TOTAL	403	348	355	285	297	241	397	3565	0
Total State-Run	323	296	299	214	227	154	318	2724	0
BCJJC	59	59	49	56	54	40	62	651	0
Cheltenham	84	64	63	37	42	13	79	506	0
LESCC	11	8	9	3	8	3	13	95	0
WMC	7	6	12	9	10	6	17	114	0
Carter	3	6	15	0	5	0	15	63	0
Noyes	31	17	25	7	19	7	31	226	0
Hickey	22	25	29	18	18	11	29	221	0
Waxter	65	62	55	35	34	15	65	409	0
Schaefer	0	0	1	1	0	0	1	2	0
Youth Centers	16	17	14	21	20	8	28	238	0
Victor Cullen	25	32	27	27	17	6	32	199	0
Privately Operated	80	52	56	71	70	52	87	841	0
In State Per Diems (Incl. Shelt.)	44	35	47	45	42	24	54	503	0
Out of State Per Diems	36	17	9	26	28	9	37	338	0

GDU Agency Goals and Actions Assessment Dashboard- DJS

(Contributing Actions, Benchmarks and Progress to Date: July 2011)

GDU IV. Reduce Violent Crime in Maryland by 10 % a Year

Contributing Actions/Deliverables	Implementation Targets	Delivery Date	Progress to Date	Status/Comments	GDU Assessment
A. Enhance Law Enforcement Efforts					
Ensure 20 contacts per youth per month for juveniles in VPI in Baltimore City	Month: 20 contacts / youth 6 Months: 120 contacts/youth Year: 240 contacts/ youth	Monthly, December '10 (6 mo), June '11 (year)		2010 Totals Month: 19 contacts / youth 6 Months: 106 contacts/youth Year: 221 contacts/ youth	2009 Totals Month: 18 contacts 6 Months: 102 contacts Year: 212 contacts
GPS monitoring	Maintain 180-200 youth	Ongoing	As of July 1: 171		
Working with DPP to identify dually involved youth and families	All dually involved youth	Ongoing	Matched 10 times		

GDU V. Reduce Violent Crimes Against Women and Children by 25% by 2012

Contributing Actions/Deliverables	Implementation Targets	Delivery Date	Progress to Date	Status/Comments	GDU Assessment
A. Enhance Law Enforcement Efforts					
Launch "Gang Initiatives"	Develop a method to share DJS juvenile information pertaining to gang involvement with law enforcement and other interests	Completed	Law Enforcement has access to the information on ASSIST through the Dashboard.		
Train all DJS employees to use GangNet	115 training sessions/ total of 506 staff to train	Completed	November: 135 sessions with 575 staff trained	DJS obtained access to GangNet looking youth up for possible gang involvement. Statewide training completed Nov, 10. New staff to be trained during entry level training.	
Expand OSK + Integrate with VPI	Expand to Baltimore City 200 slots and Prince George's County 36 slots with VPI	Ongoing	July: Baltimore City 190 slots filled Prince George's 36 slots filled	Fully implemented in Baltimore City and Prince George's	
B. Maintain 95% of Evidence-Based Services Slots Filled with Youth in the Community					

Expand to 428 EBS Slots Statewide through increased use of MST, FFT, and Multi-Dimensional Therapy Foster Care	Contracted slots : 364 - Dec	12/10	Feb: 328 active slots	91% of active slots filled 82% of contracted slots filled	
Maintain 90% percent occupancy of EBS slots statewide	96% utilization	Ongoing	July: 89% utilization	EBS Utilization Spreadsheet forwarded for each StateStat	
C. Decrease Out of State Placement of DJS Youth by 20% by 2010 and 50% by 2011 (historical numbers needed) - add amount of decrease for 2010					
Baltimore City DJS Treatment Facility	Complete construction - reliant on approval of the FY11 budget request for Design/Build funding.	2012	Search for suitable property is on-going	Suitable site not yet identified. DGS Engineers conducted site assessments on two previously identified properties and both were not suitable for building.	
Develop/ launch in-state staff secure program to bring back out-of-state youth	Develop/ launch program - capacity 48	Completed	July at capacity of 48		
D. Reduce the Avg. Daily Number of Youth in DJS non-Residential Treatment Facilities (incl. Group Homes) by 10% by 2010 and 20% by 2011 - SAME AS C -add amount of decrease for 2010					
Baseline: City - 178	City- 142	2011	February: 178		
Baseline: Southern- 73	Southern- 62	2011	February: 61		
Baseline: Metro -135 (PG-90) (MC- 45)	Metro -120 (PG-77) (MC-43)	2011	February: 153 (PG-108) (MC-45)		
E. Increase number of Baltimore City youth returning from placement with CORPS Services					
CORPS Project: Reduce Recidivism	Reduce recidivism rate of CORPS youth < 20%	Ongoing	To be updated		Currently working on this - to be more reflective of current goals/targets
CORPS Project: Increase placement of youth >18 w/employment, education or occupational skills	Placement rate 60%	Ongoing	To be updated		
CORPS Project: Decrease highschool dropout rate of formerly detained/placed youth	Increase by 20% school retention rate of youth under 18	Ongoing	To be updated		
CORPS Project: Youth w/ MVA ID Cards to date	Reviewing program to determine goals (number of youth)	Ongoing	September: 18 youth referred - 8 youth with MVA ID Cards		

CORPS Project: Participants	Reviewing program to determine goals (number of youth)	Ongoing	October: 13 participants		
G. Improve integration of child serving agency activities (GOC)					
Initiate data sharing between DJS, DHR, and other agencies through "Children's Dashboard"	Complete MOUs, Develop dashboard, Train caseworkers	Completed	MOU Signed, staff trained, directives given by each agency	DJS/DHR Staff using dashboard daily to see if youth are co-committed.	
Initiate data sharing between DJS & DC	Determine what databases contain the needed information	To be updated	Court Dispositions, Parental Information, Current Address. Legal Status, Caseworker Contact Information, Photo of the Youth, Outstanding Warrants, Offense History		
Initiate data sharing between DJS & VA	Draft legislation to be put forward that would allow VA to share information with Maryland	To be updated	On 7/21/10, transferred data on MD youth currently in Residential Treatment for matching with VA youth		

Assesment Key	
A	Ahead/ Exceeding Expectations
OT	On Track
B	Behind Schedule
CB	Considerably Behind Schedule

State/Local Implementation and Intermediary Reentry Grants

Project Name:	Continuum of Opportunity Reentry Programs & Services (CORPS)	Date:	3/31/2011	Location:	Quarters, Baltimore City, Maryland	Prog. Start Date:	1-Jul-09
Contact Person:	Patricia Flanigan, CORPS Program Manager	Tel:	240-230-3218	Email:	Gagne5@dc.mva.maryland.gov	Rpt. End Date:	30-Jun-10

Part 1	Enrollment Data	From Correctional Facility						From Detention						On Probation						Total		
		Age 17 and Below			Age 18 and Above			Age 17 and Below			Age 18 and Above			Age 17 and Below			Age 18 and Above			All Enrollees		
		Q	C		Q	C		Q	C		Q	C		Q	C		Q	C		Q	C	PY'10
1	Enrollment Goal																					0
2	a Enrolled (Total)	0	0					0						0						0	0	0
	b Enrolled Within 3 Months of Release / Probation							0						0						0	0	0
3	a Male		0					0						0						0	0	0
	b Female		0					0						0						0	0	0
4	a White		0					0						0						0	0	0
	b African American		0					0						0						0	0	0
	c Hispanic		0					0						0						0	0	0
	d Native American		0					0						0						0	0	0
	e Asian and Pacific Islander		0					0						0						0	0	0
	f Multiracial		0					0						0						0	0	0
	g Other		0					0						0						0	0	0
5	a In School Youth at Time of Arrest		0					0						0						0	0	0
	b School Dropout at Time of Arrest		0					0						0						0	0	0
	c H.S. Graduate/GED at Time of Arrest		0					0						0						0	0	0
6	a Reading Level 6th Grade and Below		0					0						0						0	0	0
	b Reading Level 7th -8th Grade		0					0						0						0	0	0
	c Reading Level 9th-10th Grade		0					0						0						0	0	0
	d Reading Level 11th Grade and Above		0					0						0						0	0	0
7	a Foster Youth		0					0						0						0	0	0

Part 2: Project Activities	Activity	MO 1	MO 2	MO 3	MO 1	MO 2	MO 3	MO 1	MO 2	MO 3	MO 1	MO 2	MO 3	MO 1	MO 2	MO 3	MO 1	MO 2	MO 3	MO 1	MO 2	MO 3
8	a Credit Retrieval																			0	0	0
	b Reading Remediation																			0	0	0
	c Math Remediation																			0	0	0
	d Tutoring in High School Courses																			0	0	0
	e Academic Counseling																			0	0	0
	f Mentoring																			0	0	0
	g Counseling																			0	0	0
	h Internships																			0	0	0
	i Work Experience																			0	0	0
	j Occupational Training																			0	0	0
	k Substance Abuse Services																			0	0	0
	l Health Services																			0	0	0
	m ESL Classes																			0	0	0
	n GED Instruction																			0	0	0
	o Community Service																			0	0	0
	p Follow-up Services																			0	0	0
	q Other Support Services/Activities																			0	0	0

Completed or No Longer Enrolled																		
12	a	Completed the Program	0		0		0		0		0		0		0	0	0	0
	b	No Longer Enrolled	0		0		0		0		0		0		0	0	0	0
	c	Moved From Target Area	0		0		0		0		0		0		0	0	0	0
13		Remained In Project	0		0		0		0		0		0		0	0	0	0

Participant Goals Tracking

1. Return to High School	Goal	80%	Planned	0
	Actual	#DIV/0!	Actual	0

2. Reading and Math Gains	Goal	60%	Q. Avg. Part.	0.0
	Actual	#DIV/0!	Act. Part.	0

3. Long-Term Placement Rate	Goal	60%	Out of School	0
			Completed	0
	Actual	#DIV/0!	Placed	0

4. Recidivism	Goal <	17%	Numerator	0
	Actual	#REF!	Denominator	#REF!

Edit Checks

Cumulative

0	Gender Check - Must be 0 or the reported Male and Female Counts do not match total enrolled.
0	Race Count - Must be 0 or the reported race counts do not match total enrolled.
0	School Count- Must be 0 or the reported school counts do not match total enrolled.

Quarterly

0	Gender Check - Must be 0 or the reported Male and Female Counts do not match total enrolled.
0	Race Count - Must be 0 or the reported race counts do not match total enrolled.
0	School Count- Must be 0 or the reported school counts do not match total enrolled.