

## Meeting Summary

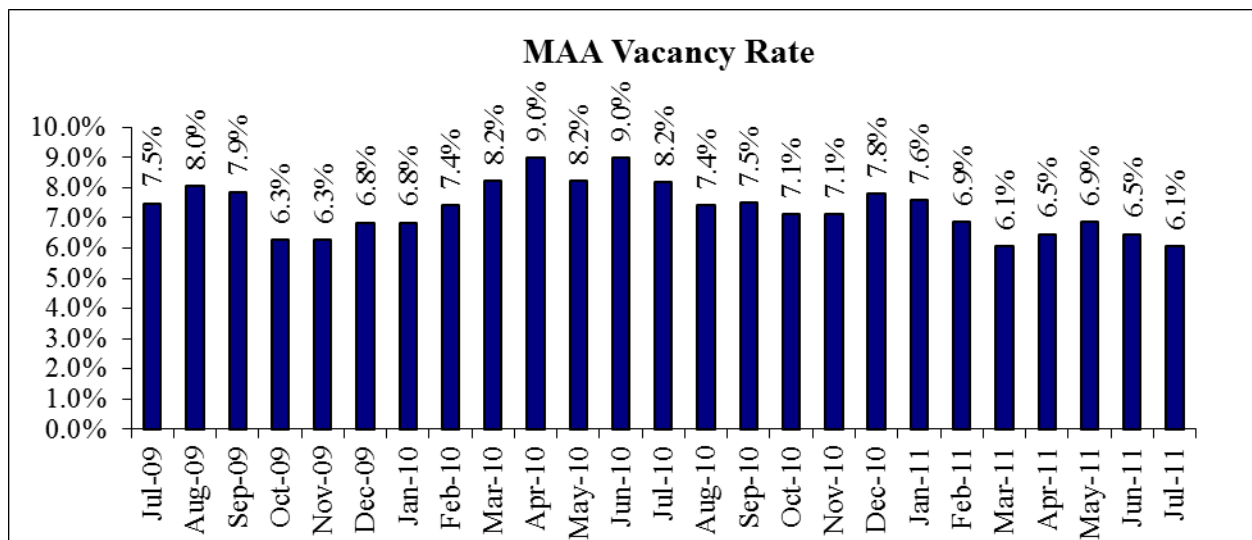
Following is a summary of issues discussed at the MAA Stat on October 4<sup>th</sup>, 2011 for reporting period April 2011-July 2011.

### General Observations

- BWI has added several new international destinations recently. These include a new route to Freeport Bahamas (Vision Airlines), Aruba (Airtran), and Frankfurt Germany (Condor Airlines) .
- In order to improve the robustness of BWI's international portfolio, BWI has gone back to attending International Conference of International Flights

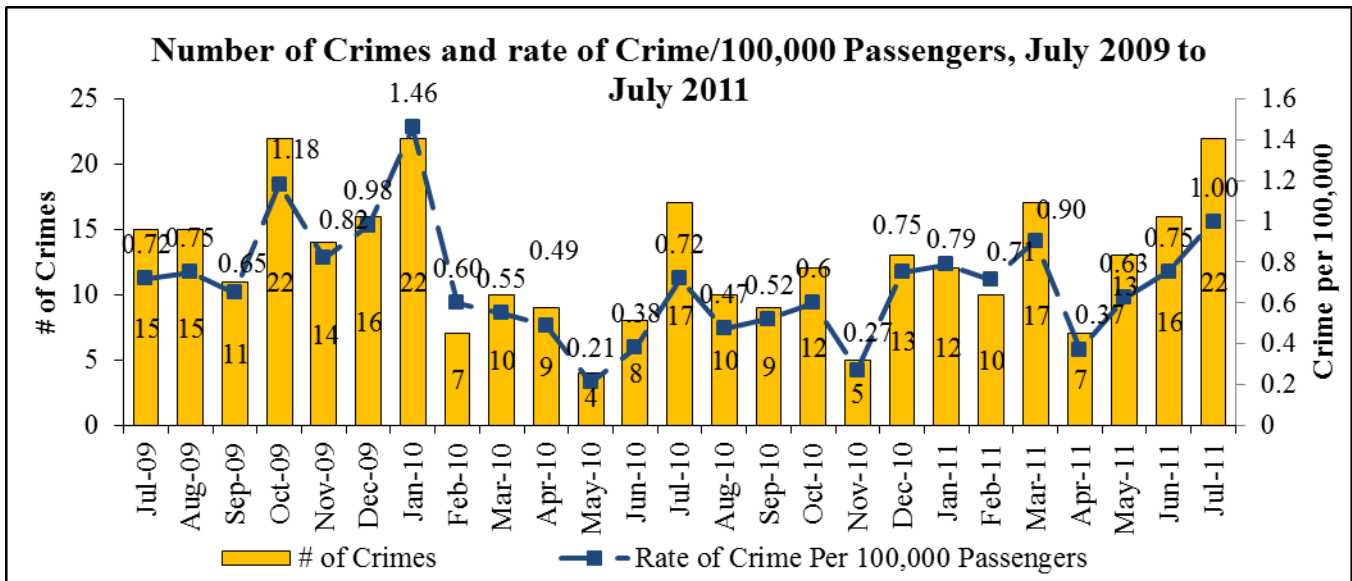
### Follow-Up

- **Staff Retention Practices.** The MAA vacancy rate is down to 6.1 percent since a high of 9.0 percent in April 2010. In order to maintain a low vacancy rate, MAA is developing a pilot mentor program. This program is being designed to provide guidance within an employee's professional development path by helping to identify and shape short-term and long-term career goals and priorities. The program's goal is to retain employees in order to maintain a highly qualified staff.



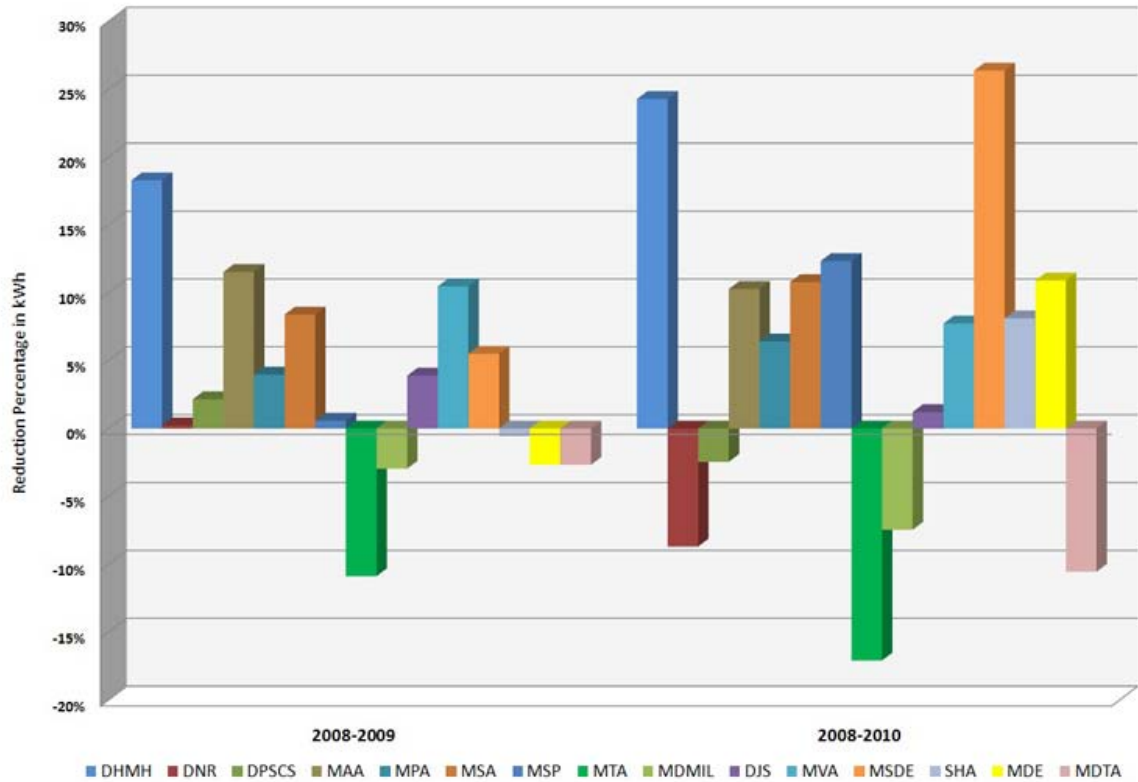
- MAA has made a concentrated effort recently to fill vacant positions. They have increased outreach to local schools and have been working with the Department of Labor and Licensing. This has produced results in electrician and IT hires.
- In regards to the mentoring program, management will participate. The process will be a semi-formal program where participants will meet twice a month. The program will go for six months. Further progress will be reported at the next MAA Stat.

- Crime Reporting.** MAA stated previously that they were updating their crime statistics to incorporate a wider array of crimes. Under the previous methodology, thefts and motor vehicle thefts were included in the totals. The following categories have been added to the list: arson, assault, attempted theft, attempted murder, breaking and entering, attempted breaking and entering, bomb threat, cruelty to animals, child abduction, false imprisonment, fraud/embezzlement, harassment, MDOP, robbery, sex offenses, tampering with aircraft, telephone misuse, threat, unauthorized use, unattended child and violation of protection order. With the new calculations, total crimes reported and the crime rate have both increased compared to the previous methodology, however we feel it is a more representative figure. Since April, the crime rate has climbed from 7 incidents to a high of 22 in July.

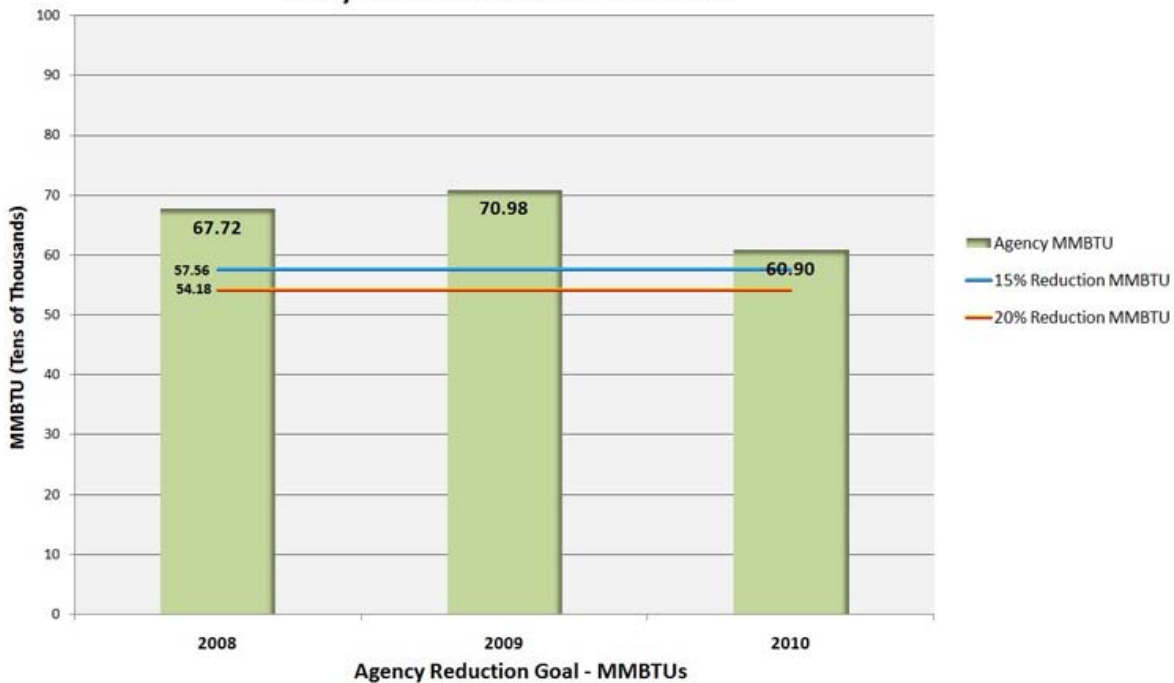


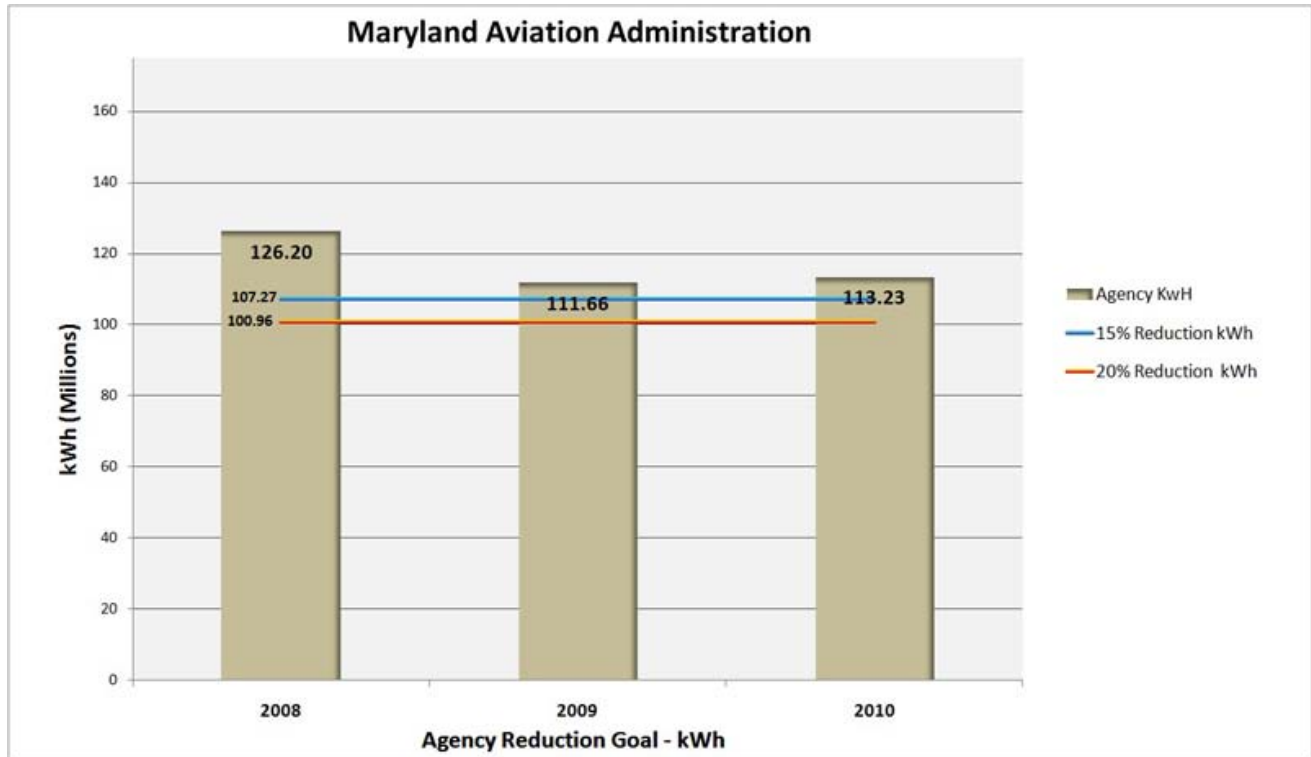
- MAA reports that they have been able to recalculate annual reports to reflect the new crime reporting. Monthly reporting has been recalculated to January 2011.
- The increases in recent incidents at the BWI are mainly due to increases in fraud. While assaults have been down across the board.
- MAA reports that the recent decrease in assaults is largely due to increased cooperation with other law enforcement agencies. MAA has been meeting with police on a weekly basis and they meet with others such as FBI and TSA regularly as well.
- MAA Utility Bill Submittals for the Energy Database.** MAA was one of the first agencies to submit a sufficient amount of utility bills to move forward with creating an energy baseline. From 2008 to 2009, MAA had the second highest reduction in energy out of the fifteen State Agencies that were tracked. Due to a slight increase in Energy usage in 2010, they are now 6<sup>th</sup> among these agencies. MAA has previously reported that energy use is closely tied to weather at BWI.

### 15 State Agency Energy Reduction Competition



### Maryland Aviation Administration

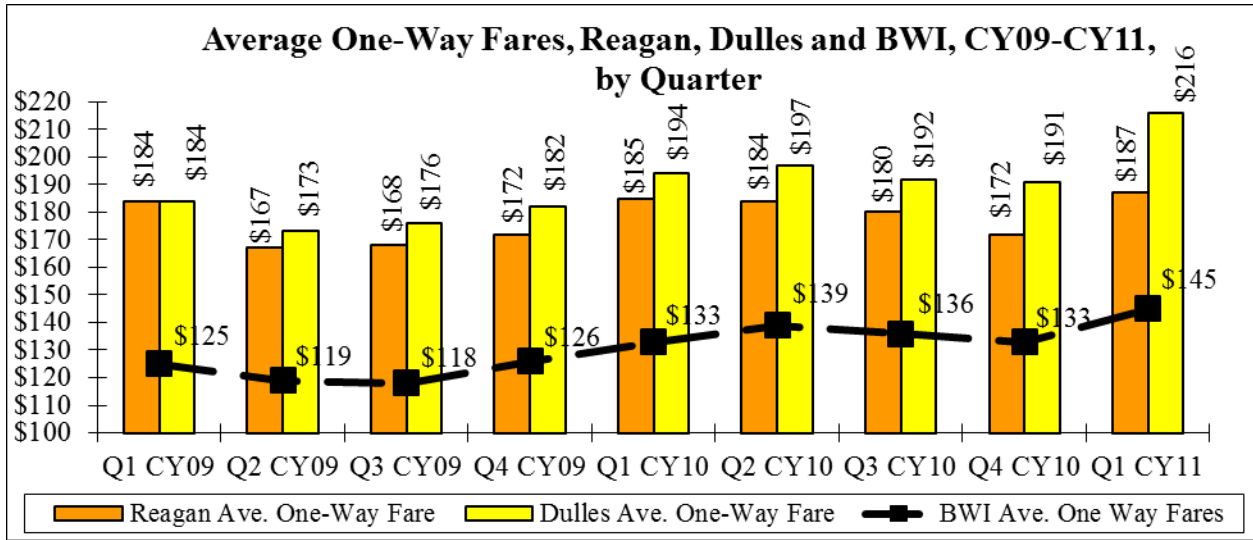




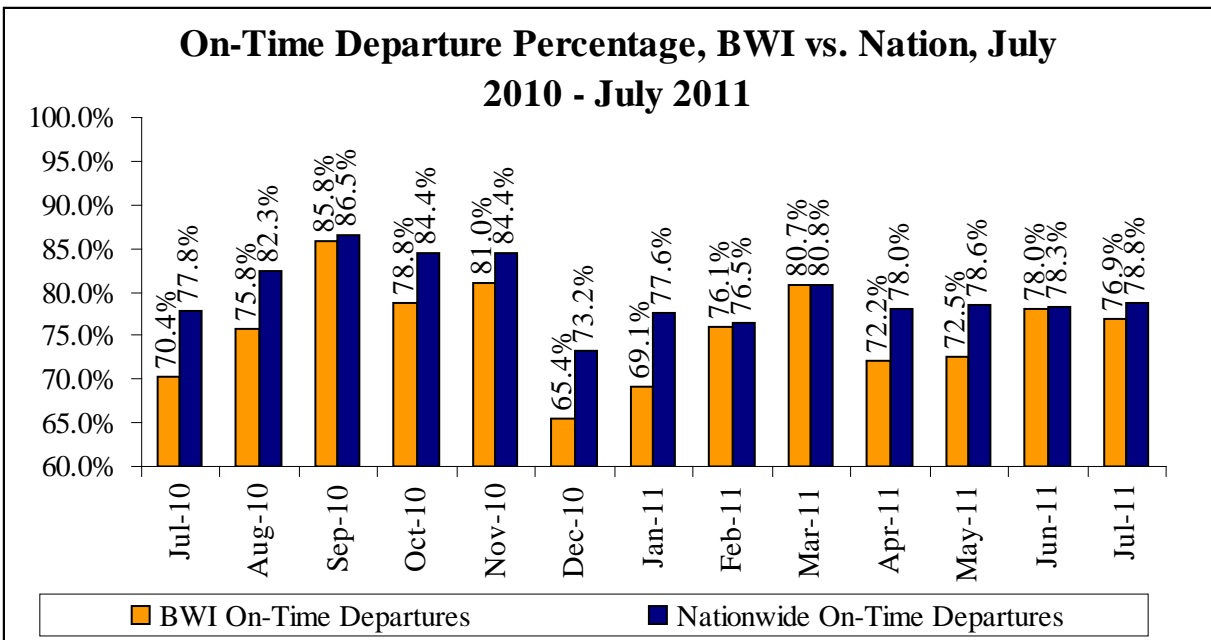
- MAA reports that they are putting their EPC into place now. They also report that their ESCO has started but has not been completed.
  - MAA reports that they have a solar system on top of the daily garage. They also have eight electric car charging stations at BWI.
  - Increases in electricity use from 2009 to 2010 are largely driven by increases in the number of high temperature days.
- **Apron Reconstruction Project.** The ARRA portion of the C/D alleyway project is complete and the total project is scheduled to be substantially complete late in 2011.

### General Operations

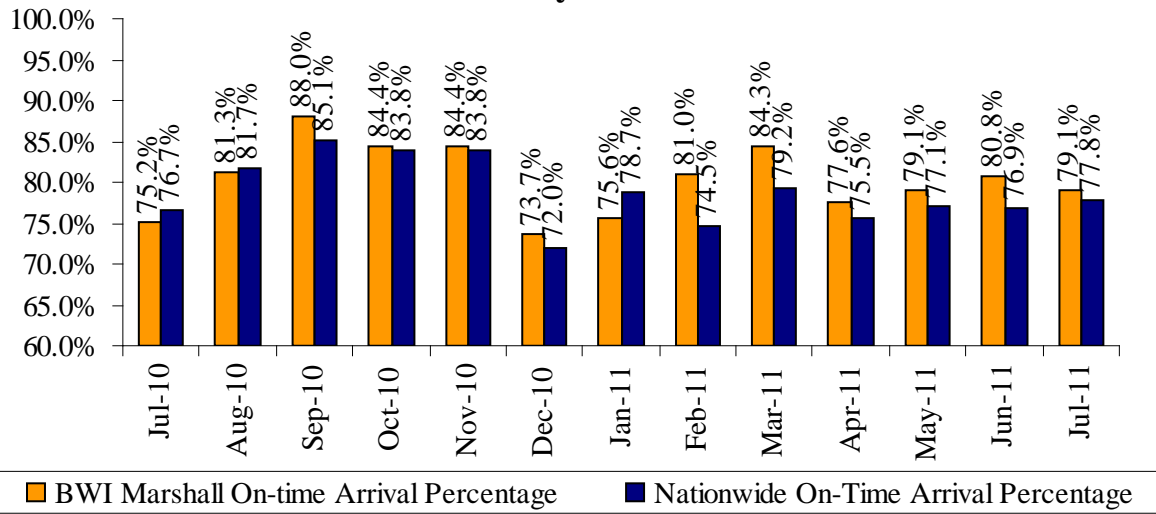
- **Average One-Way Fares/Southwest-AirTran Merger.** BWI one way flights were the highest they have been since before tracking began in 2007. Despite this rise, average one way fares at BWI continue to be significantly less than Reagan and Dulles airports.



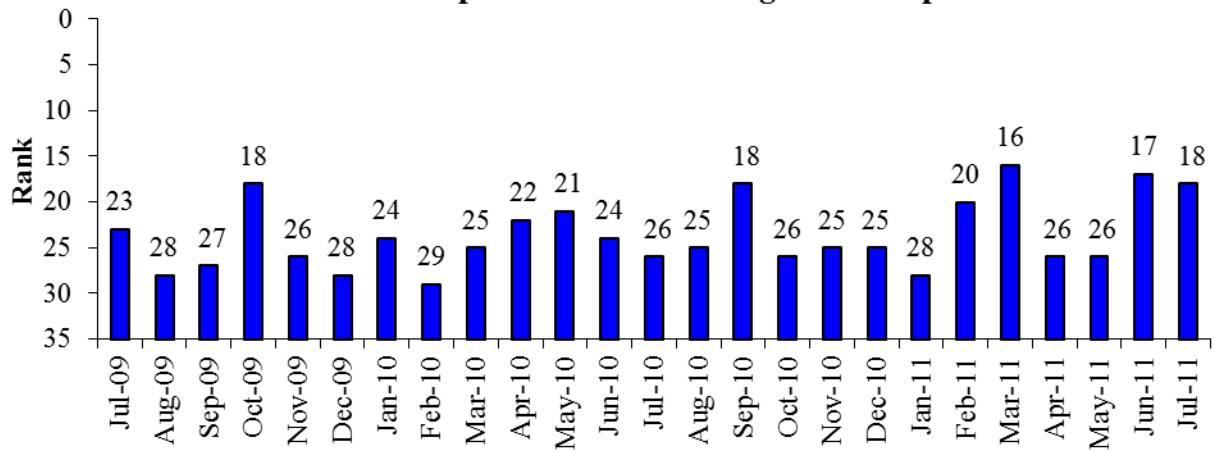
- On-Time Departures and Arrivals.** While the on-time arrival percentage at BWI has been above the national average for all of FY2011 except for one month, the on-time departure rate has been behind the national average for every month. BWI currently ranks 18<sup>th</sup> among large hub airports in on-time departures and 1<sup>st</sup> for arrivals. MAA has previously reported that this is out of their hands and attributable to airlines decisions.

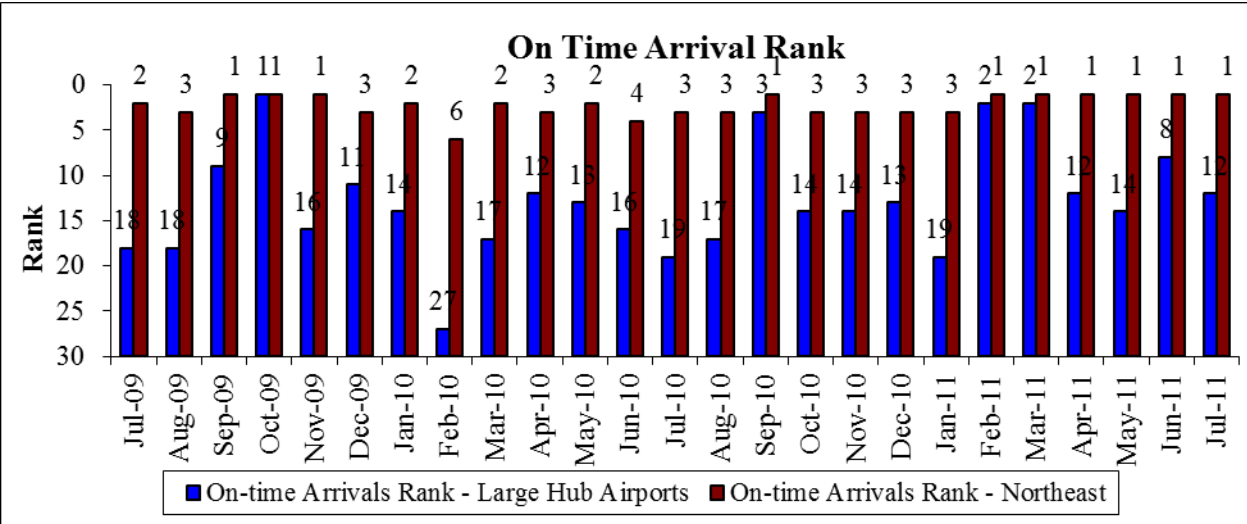
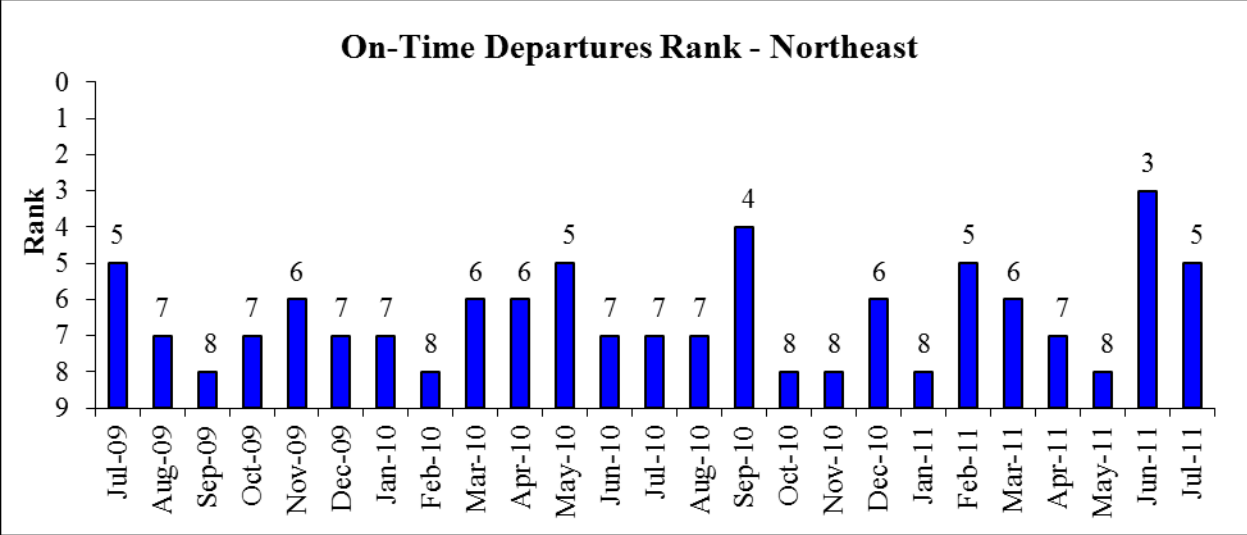


### On-Time Arrival Percentage, BWI vs. Nation, July 2010 - July 2011

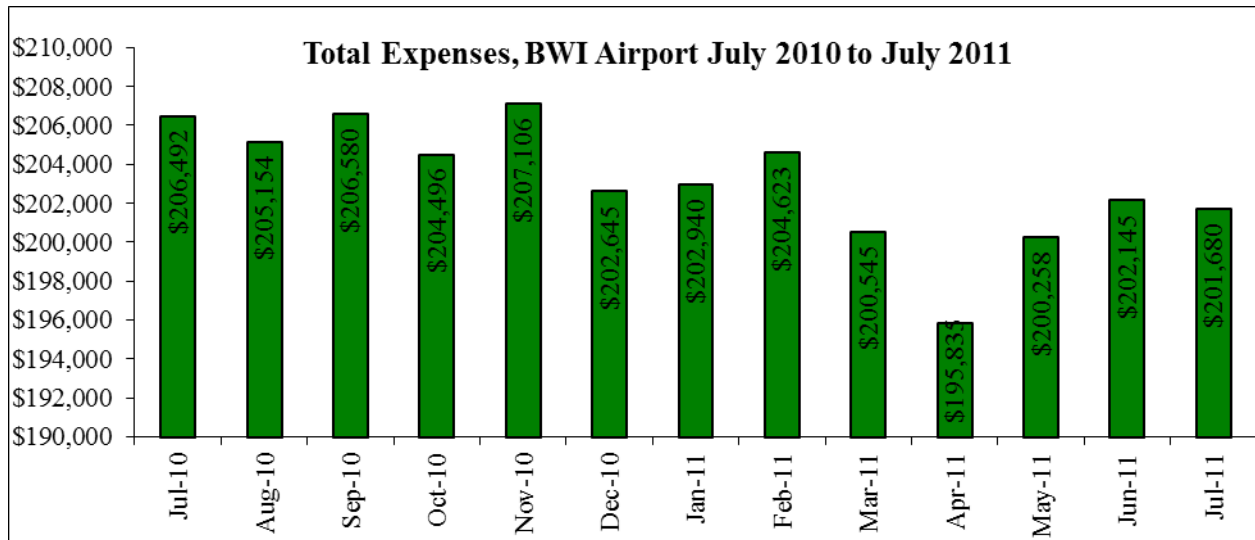
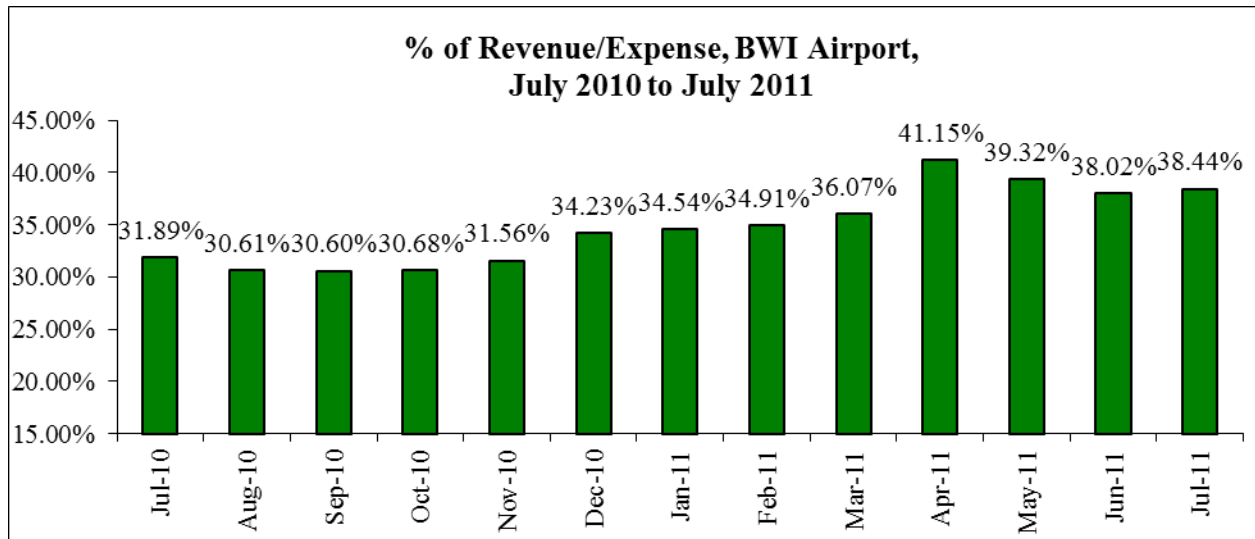


### On-Time Departures Rank - Large Hub Airports



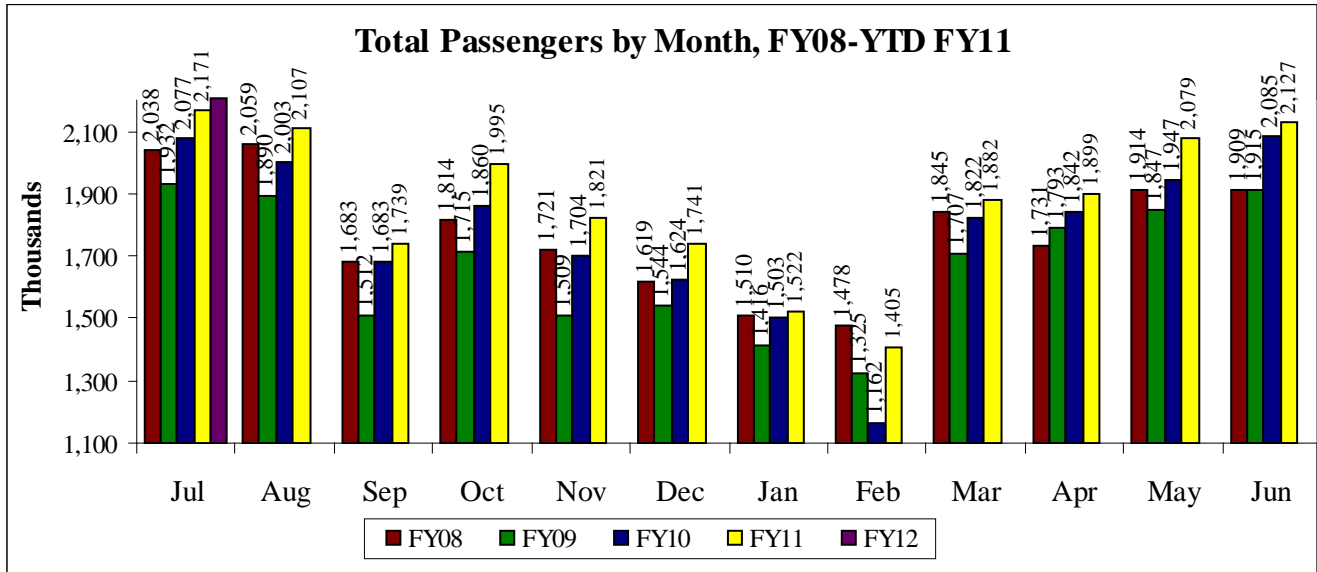


- Revenue/Expenses.** BWI airport has continued to see an increase in the percent of revenue to expenses. These peaked in April with a percentage of 41.15 but have dropped slightly to 38.44 percent in July. Overall, expenses have been decreasing at BWI over FY11 and the July 2011 numbers stand at almost five million less than in July 2010.



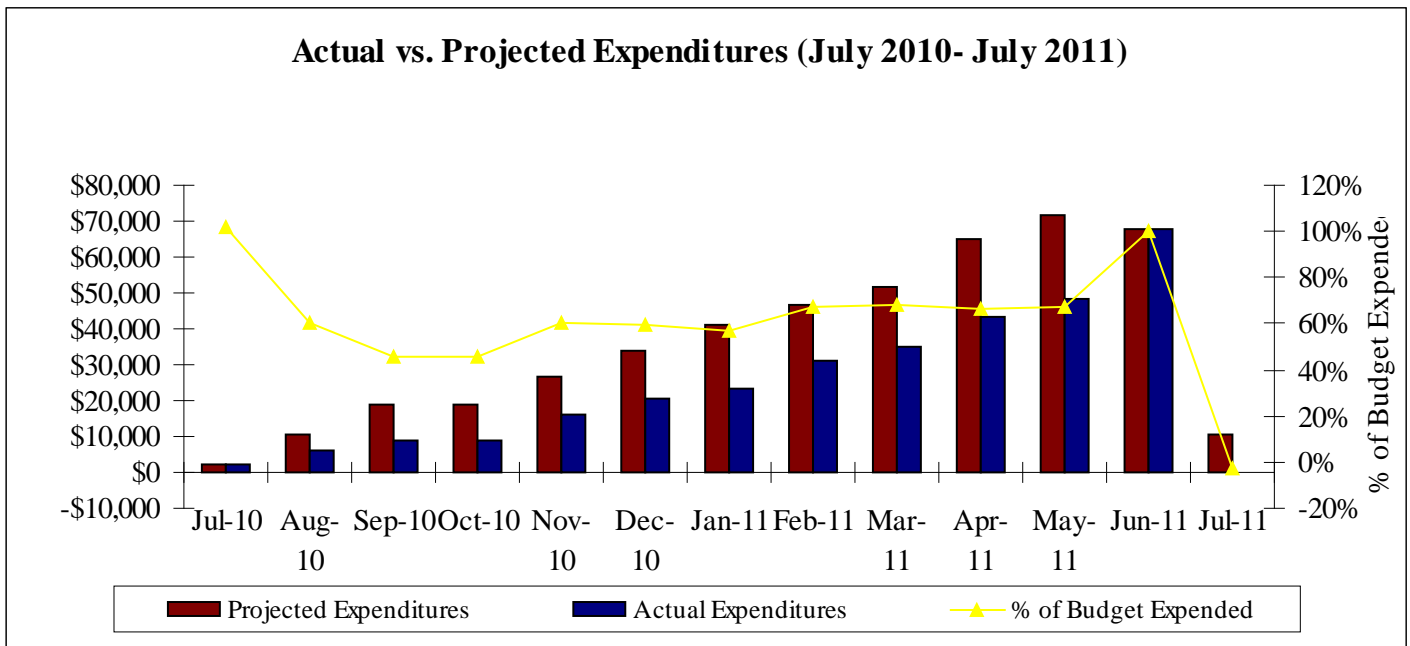
- MAA reports that their revenue is outpacing the increase in passengers because they are able to offer better concessions due to renovations, which increases per capita revenue.
- Although they have been able to keep expenses low recently, MAA reports that this will not be sustainable as regular maintenance will need to be increased to maintain facilities.

- BWI Passengers.** BWI airport has continued to see an increase in the number of passengers at BWI. Passenger totals at BWI for July 2011 were 2,205,035.



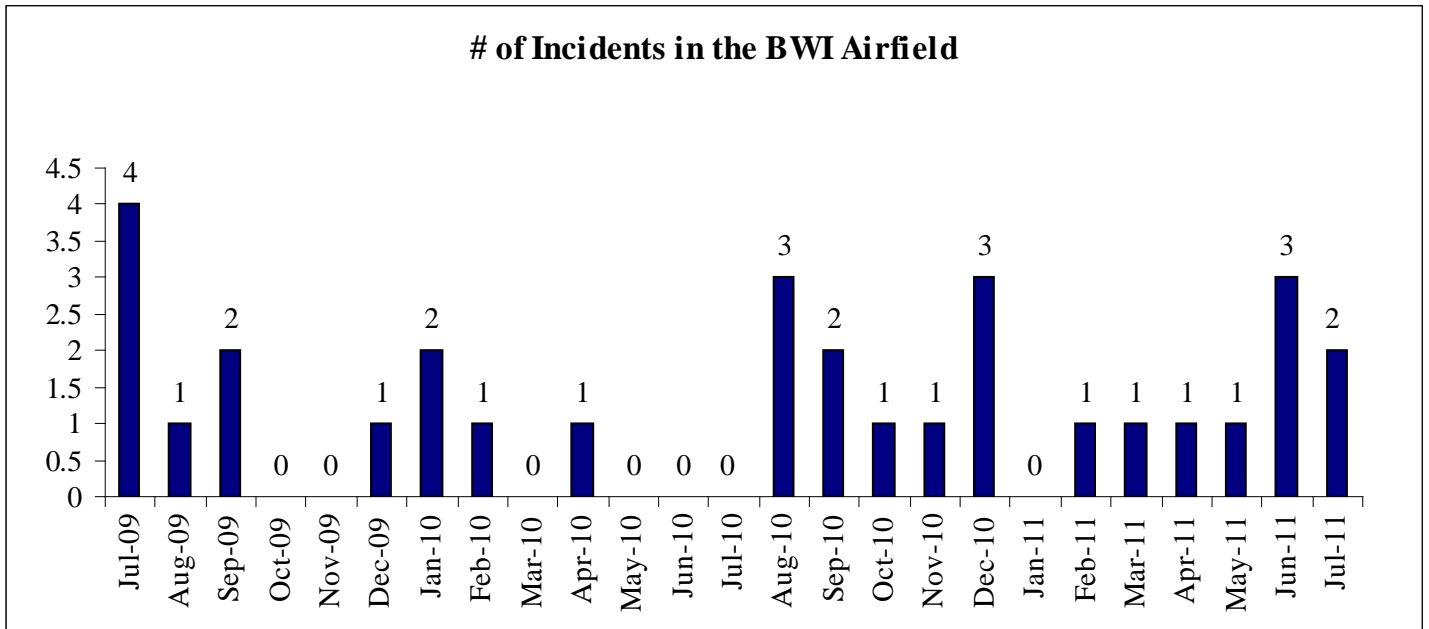
- There will be a terminal expansion between the B and C concourses, which will occur sometime after the New Year. The expansion is driven by security so passengers will not need to go through security in order to make a connection on one of the other concourses. The expansion will also allow Southwest to expand.
- The expansion will allow for new concession space at the nodes. This will be prime space as it will see a large amount of passenger traffic.

- **Capital Projects.** MAA matched its actual expenditures to expected expenditures for June 2011. However, to start off FY2012, MAA saw a negative actual expenditure for July.

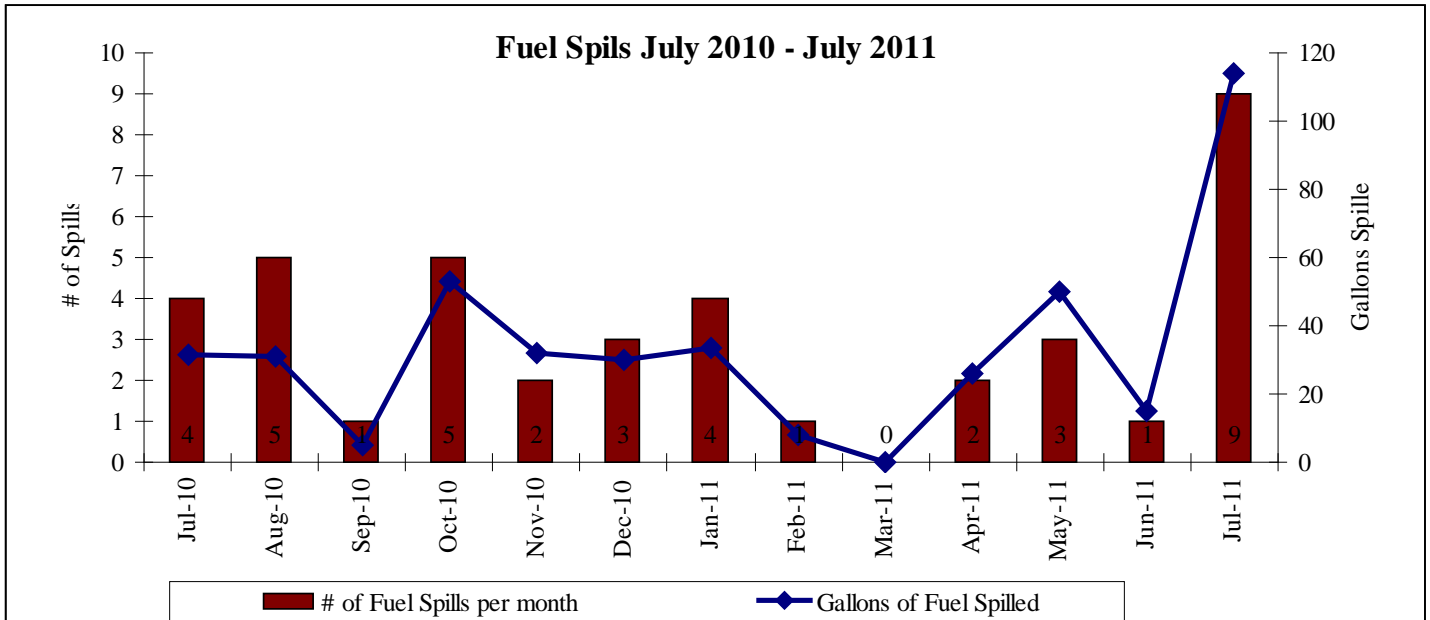


- MAA reports that the CD apron project lost six weeks due to weather. It is scheduled to be done by the end of the year. The project is on budget. While the project will improve telecommunications and improve operational efficiency, the general public will not notice any major impacts.

- **Airfield Incidents.** June and July saw multiple airfield incidents after a period of 5 months with 1 or fewer incidents per month.



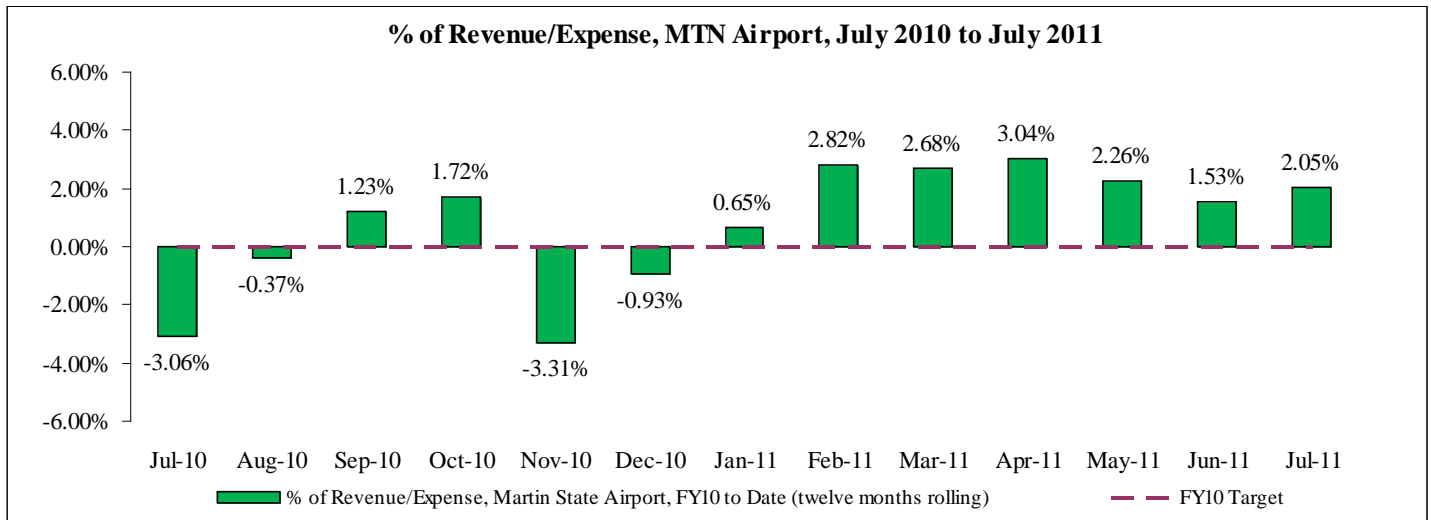
- Fuel Spills.** There were 9 spills in July 2011 with 114 gallons of fuel being spilled. This is a large jump from all previous FY11 months and the highest spillage since July 2008.



- MAA reports that the increase in fuel spills is due to high temperatures in July. As a result aircraft is forced to vent some fuel. Each venting incident is monitored and properly cleaned. The vendor has responsibility for the cleanup.
- BWI transfers roughly 18 billion gallons of fuel per month.

## Martin State Airport

- **Martin State Airport.** Since January 2011, percent of monthly revenue to expense has been positive. The total revenue to expenses ratio for July 2011 was 2.05 percent.



## Airport News

- **Natural Disasters.** With the recent hurricane, earthquake, and sustained rainfall, MAA has not reported any incidents at Maryland Airports.
  - MAA reports that they were undergoing a security threat at the same time as the earthquake. While the security threat ended up being resolved, the combination of the two allowed for a realistic test for an incident. This highlighted the importance of communication and maintaining order. The airport has its own alternative communication system which can be used at times like this.
- **Runway Repaving Project.** The most intensive phase of the runway repaving project occurred in early September, with a shutdown of two of the airports runways for 52 hours. The project is expected to continue through October. This will cause continued shifting of flights from 11:00 pm to 6:00 am.
  - This type of paving project occurs every 20 years. Weather has been a big issue with this project. MAA reports that they have received 88 complaints for the changed flight patterns that result from the repaving project. Many of these have been repeats. They are planning to continue meeting with local neighborhood committees.