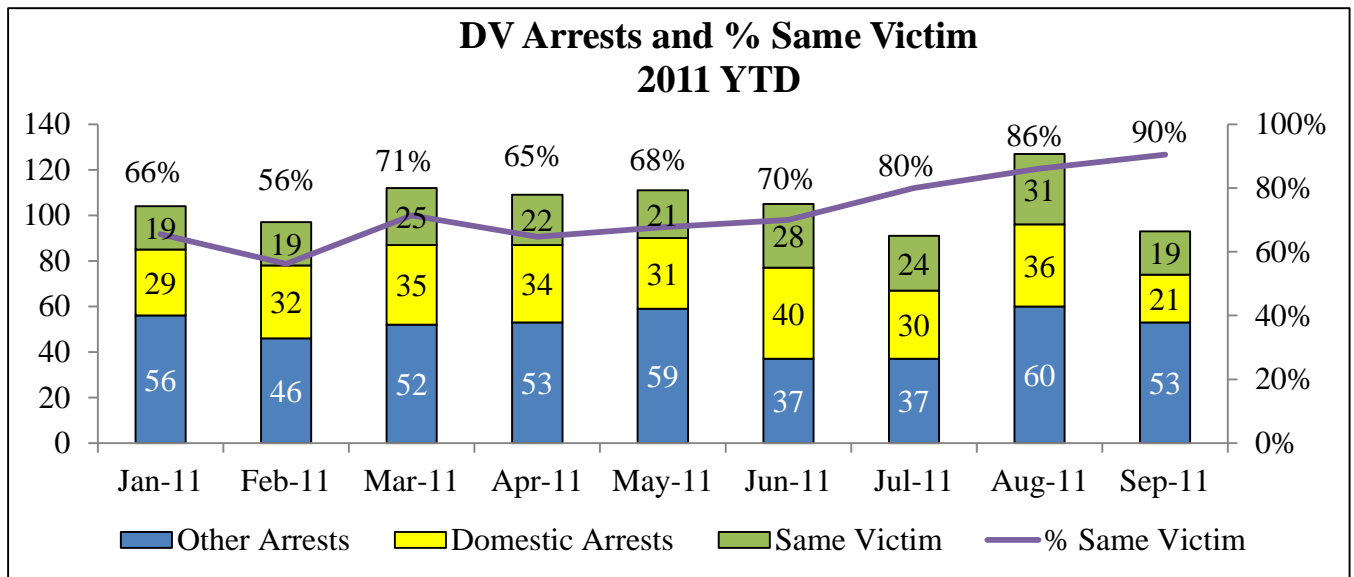


Meeting Summary

Following is a summary of issues discussed at the DPSCS—DPP Stat on October 20, 2011. Analysis is provided by StateStat.

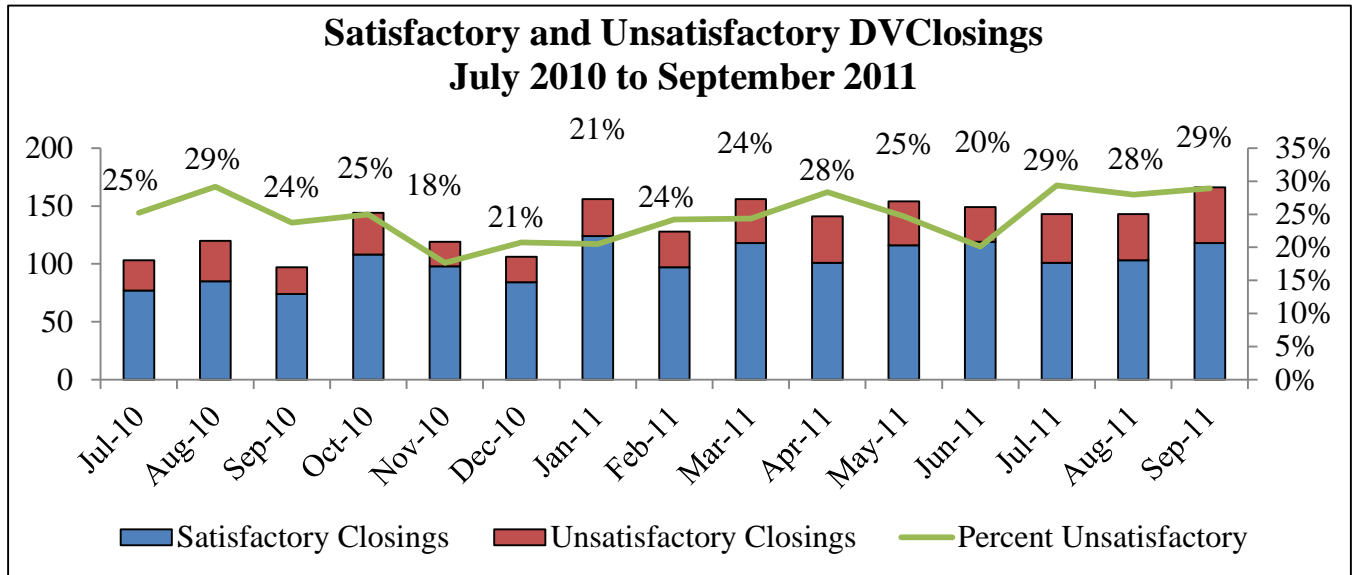
Violence against Women

- **Domestic Violence (DV).** DPP has been tracking DV since January 2011 using the following metrics: new offense arrests, domestic-related new offenses, and domestic-related new offenses with the same victim. Daily, the Division identifies DV offenders as they are placed under supervision and then tracks new offenses against the original victim, or any other new offenses that are DV related. The Division reports that this is the most accurate and relevant method for tracking DV within DPP. DPP is ready to begin reporting this to StateStat on a monthly basis. As shown in the chart below, September saw the highest percent of offenses against the original victim since this tracking began.
 - The agency responded that home visits are increasing, and that agents are dedicated to Domestic Violence case. These are mandatory reporters to the Department of Human Resources. Further, the agency employs five victim advocates who do not go on home visits.

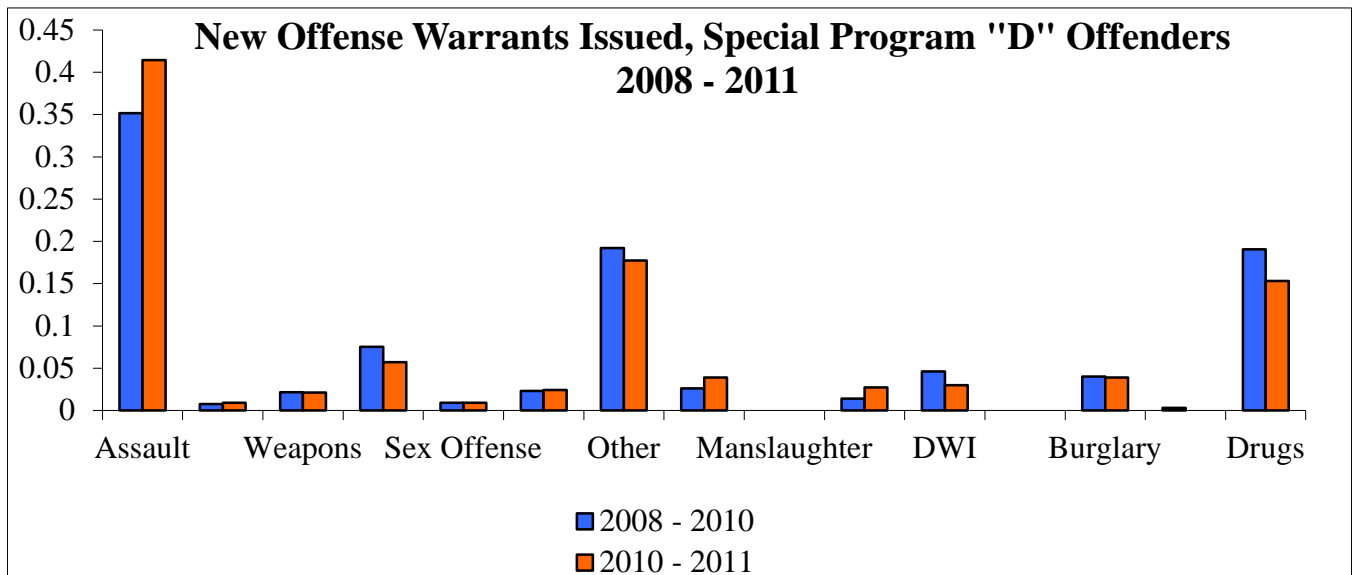


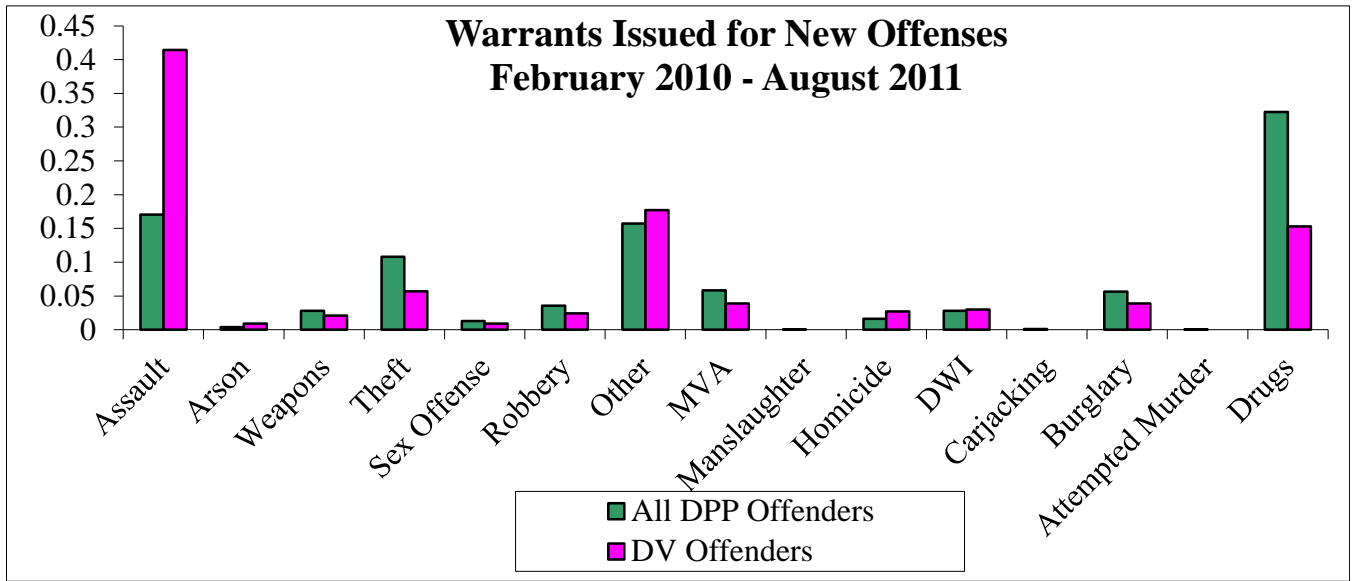
- **Parole Commission.** The Maryland Parole Commission (MPC) considers whether a crime is DV-related when making decisions, which frequently results in Commissioners straying from guidelines when victims are women and children. As of October 11, 2011, MPC began tracking DV-related parole hearings by noting the nature of the circumstances on the docket sheet and applying a “Domestic Violence” comment on the docket sheet. MPC will begin manually tracking this information on a monthly basis.
 - The agency elaborated that this will clarify which cases are domestic violence, as some offenses are not considered violent (ex. Assault in the second degree).
- **Domestic Violence Closings.** Based on DPP’s analysis, technical violations are expected to increase in the short term as offenders continue to be held more accountable for technical violations. Indeed, unsatisfactory closings increased to 29 percent in September 2011 as shown in the chart below. As

mentioned in the previous DPP Stat, these offenders are held to a higher standard of compliance with conditions of probation. DPP continues to implement new supervision strategies to confront this population.



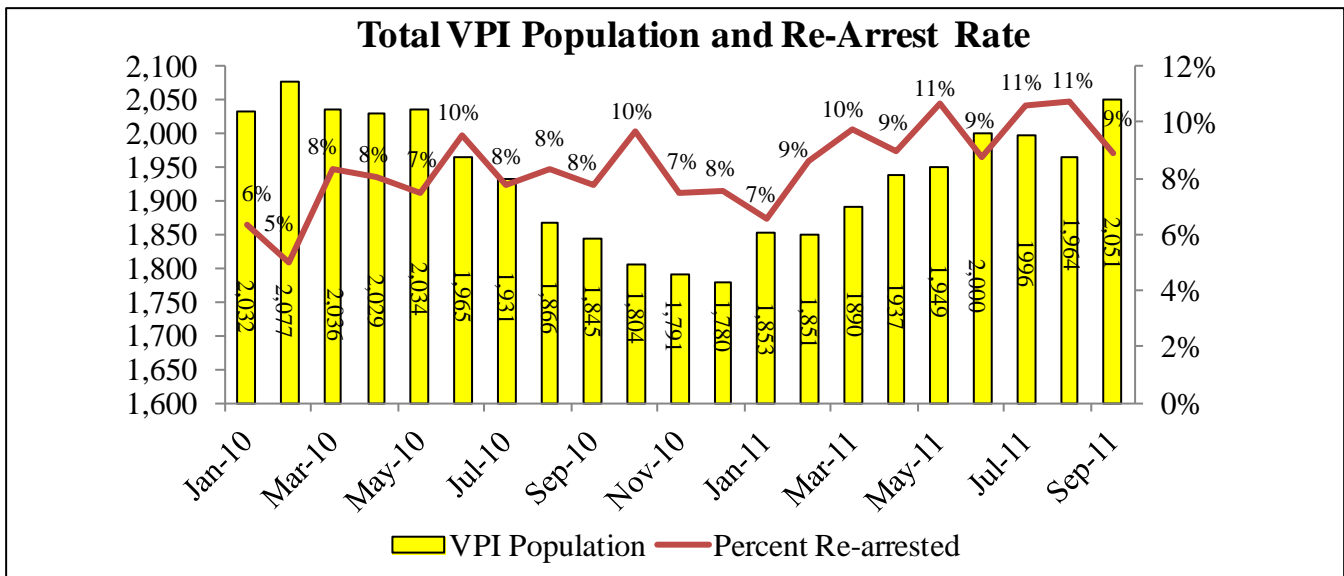
- DV Offenders vs. DPP General Population.** The panel may recall the chart at the previous DPP Stat revealing that assaults comprise the highest concentration of new offense warrants issued to DV offenders. The Department responded that it expects there to be more assault arrests among the DV population than the general population. Historically, the DPP general population typically has more illegal drug related offenses as shown in the charts below. The Department mentioned that DV agents will receive specialized training for this unique population in the spring.

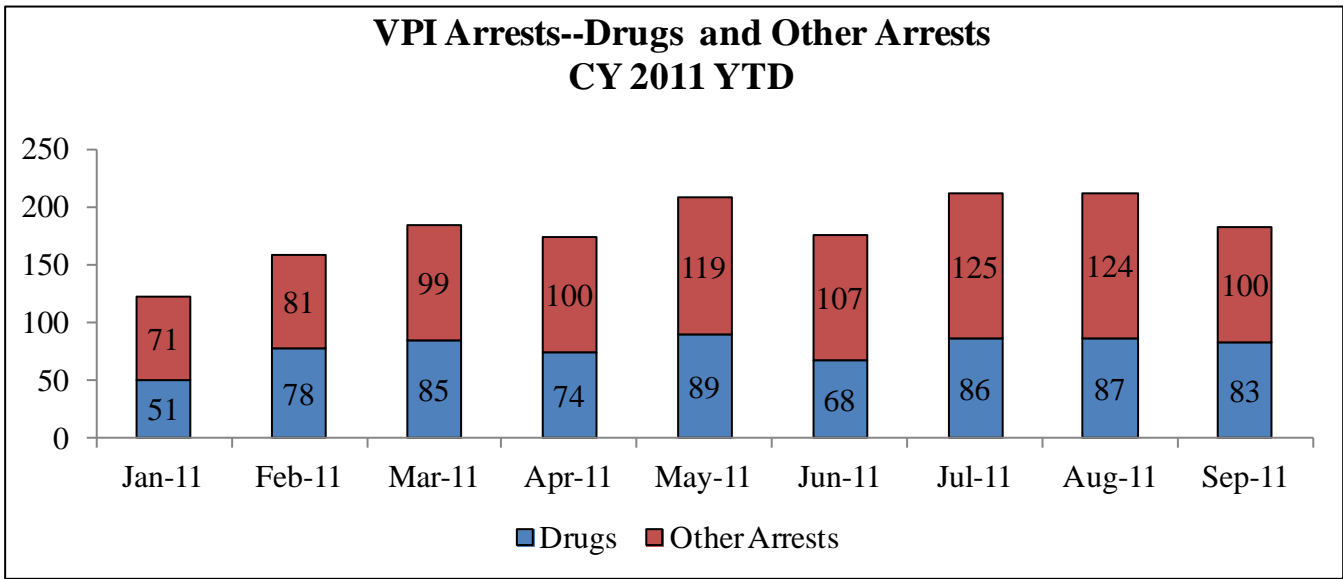




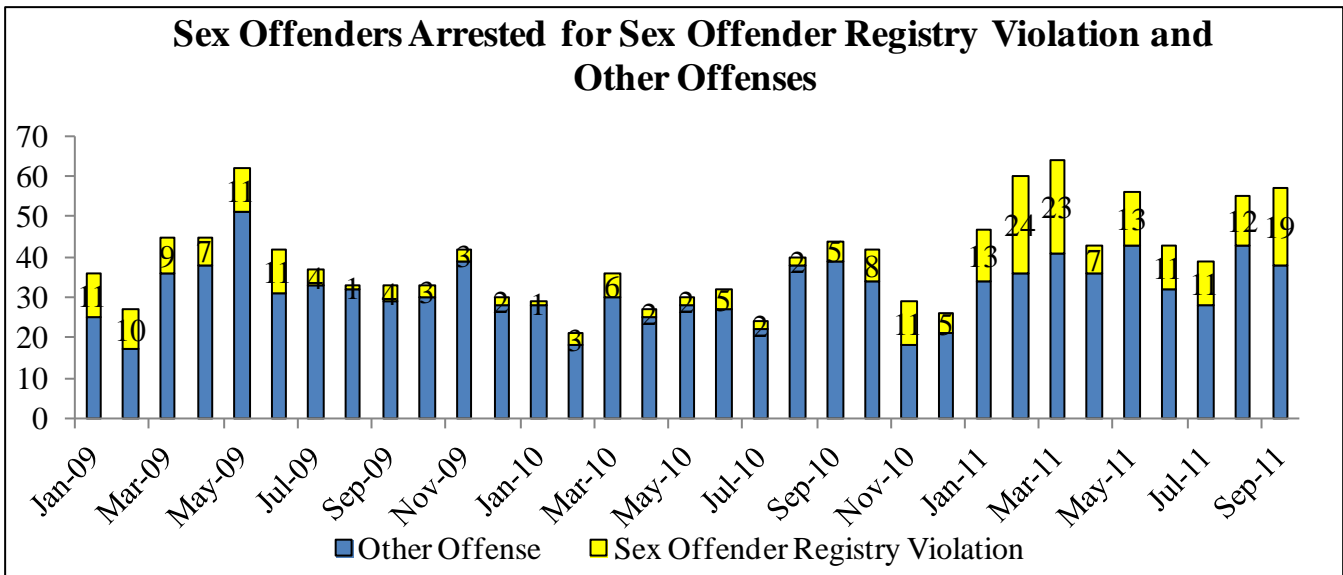
Supervision

- VPI Re-Arrest Rate.** In response to the conversation about the increasing VPI re-arrest rate, the Division explained that the best explanation for the increase in the number of violent offenders being rearrested is crime initiatives by law enforcement. Previously, DPP has mentioned that the increased re-arrest rate was due to the Department doing a better job of identifying offenders for VPI who will reoffend. DPP has contacted MCAC and was advised that MCAC can analyze the data to determine where there is an increase in VPI offenders being rearrested. MCAC can then contact that jurisdiction and find out if there were any initiatives in their area, along with reaching out to State and Federal agencies. This project is set to begin on or about 10/20/11. MCAC will advise on the progress of the project. The majority of these are for drug offenses.





- **Sex Offenders.** The percentage of sex offender re-arrests due to sex offender registry violations has been increasing in recent months.
 - The agency responded that this is partially due to a new law that was implemented last October, and partially due to offenders failing to register an address. This is a criminal offense.



Overtime

- **Overtime expenditures at BCBIC and BCDC.** DPDS Administrative Team met with Deputy Secretary G. Lawrence Franklin to identify the overtime drivers related to DPDS emergency room and off site secondary medical care.
- **Fiscal Year 2010 Issues.** During FY 2010, DPDS *was not* in compliance with Maryland’s Model Guidelines for the Security of Prisoners for EMS and Hospital Settings and the DPSCS requirement that two officers be assigned to all hospital watches. DPDS assigned one Officer for a hospital watch when a detainee was admitted to the University of Maryland Medical Center (UMMC) off-ward, Bon Secours off-ward, or at Johns Hopkins Hospital (JHH), during FY 2010. DPDS assigned two

Officers for a hospital watch, when a detainee was admitted to Mercy Medical Center (MMC) at the request of the hospital's security operations, during FY 2010.

- **Fiscal Year 2011 Issues.** DPDS has always complied with assigning two Officers for an emergency hospital run and for secondary medical appointments. All hospitals, including Bon Secours and UMMC, require a medical escort, at all times, during the detainee's ER medical assessment. Beginning FY 2011, DPDS complied with the Maryland's Model Guidelines for the Security of Prisoners for EMS and Hospital Settings. Detainees admitted to Bon Secours or UMMC are housed on the security ward, if a bed is available, which is staffed by DOC. Two custody staff maintains watch of detainees admitted to all hospital off wards. Listed below is a comparison of the detainees admitted to long-term specialty care the same time last year.
 - The agency reported that most of the days were due to bedside commits, such as gunshot wounds or burns. The agency will disaggregate the type of admissions for the next DPP meeting.

Detainees Admitted to Long-Term Specialty Care		
<u>BCBIC Data</u>	<u>4th Qtr. FY 2010</u>	<u>4th Qtr. FY 2011</u>
Number of Detainees Hospitalized	54	54
Total Number of Hospital Days	220	300
Average Length of Stay (Days)	4.07	5.6
<u>BCDC Data</u>	<u>4th Qtr. FY 2010</u>	<u>4th Qtr. FY 2011</u>
Number of Detainees Hospitalized	59	55
Total Number of Hospital Days	270	242
Average Length of Stay (Days)	4.6	4.4