

## Meeting Summary

Following is a summary of issues discussed at the DPSCS—DOC and DLLR Stat on October 27, 2011. Analysis is provided by StateStat.

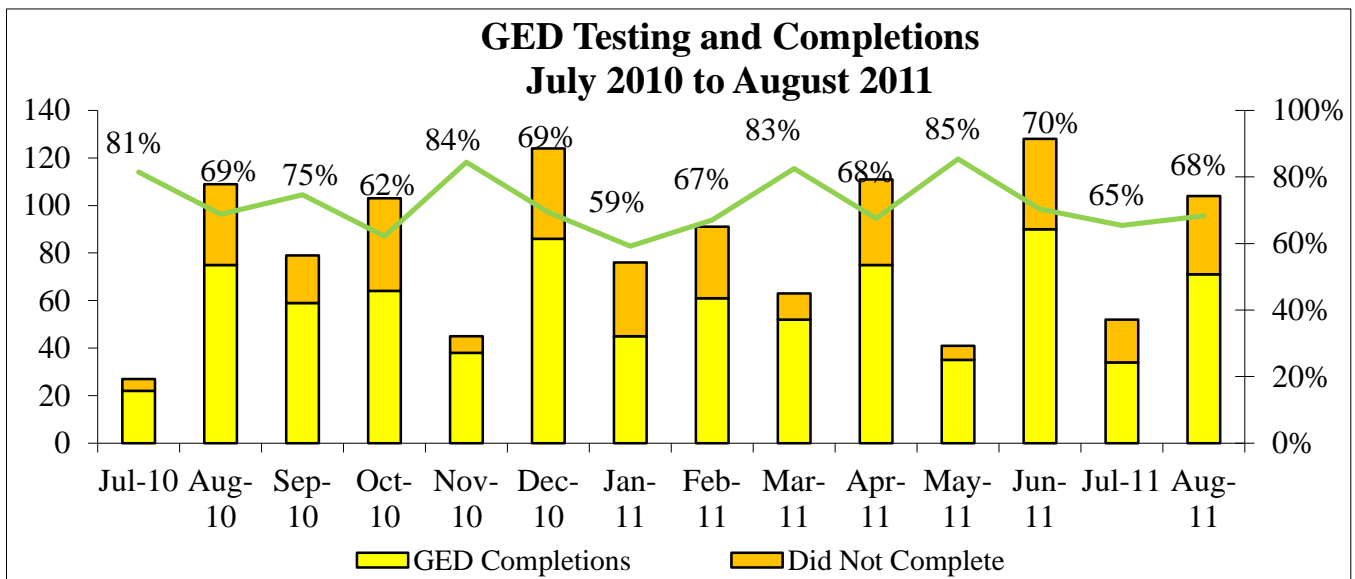
### Correctional Education

- **Released Inmates.** DLLR and Jacob France Institute (JFI) conducted an analysis of the 899 May releases provided by DOC. After removing those without SSNs, duplicate SSNs, and invalid SSNs, the total was 703 inmates. Of this count, 93 released inmates—or 13 percent—accessed the One-Stop System as shown in the chart below. Further, of the 703 inmates released there were 81 employment matches—or 11.5 percent—in the current quarter.
  - The panel and the agency discussed ways in which JFI could help DLLR/DOC determine how many inmates were becoming employed or registering in One-Stops following release. One suggestion was to compare release cohorts from 2010 and 2011.

<b>May Releases who Accessed One Stop System</b>	
<b>LWIA</b>	<b>Count</b>
Anne Arundel	7
Baltimore County	17
Baltimore City	29
Frederick County	1
Lower Shore	6
Mid-Maryland	2
Prince George's County	1
Southern Maryland	11
Susquehanna Region	3
Upper Shore	3
Western Maryland	7
Virtual Office	6
<b>Total</b>	<b>93</b>

- **Re-Entry Models.** The DLLR Transition team identified re-entry programs in Kansas and New Jersey with components that could strengthen Maryland's re-entry efforts. The Kansas Department of Commerce and Corrections worked in tandem to create a collaboration involving:
  - Video Conferencing Equipment that allows incarcerated individuals to participate in One-Stop Orientations and to be interviewed by employers prior to their release.
  - WIA staff assigned to work on the Mobile One-Stop unit to assist incarcerated individuals with accessing the workforce on-line system to search for employment.
- New Jersey Department of Labor and DOC also work as partners to assist inmates in obtaining viable employment in the following ways:
  - Operate One-Stop Career Center computer labs at 8 prisons that support Workforce Learning Link to allow DOC inmates to complete their job search preparation.
  - Uploads of assessments, resumes, and personal budgets to the DOL system so that when inmate arrives all the necessary preliminary work is completed

- Every unemployed inmate under supervision MUST register at a One-Stop when released. Many parole offices are located near the One-Stops. If an inmate is released without supervision, there is no requirement for registering at the One-Stop Career Center or for employment tracking.
- The agency leaders are discussing these options, and whether they can be implemented in Maryland.
- **GED Testing and Completions.** In FY 2011, an average of 70 percent of inmates who took the GED test completed the course. In the first two months of FY 2012, completions were at 67 percent. The number tested and percent completed in August of 2010 and 2011 were practically unchanged. In August 2011, more students at MCI-J failed than passed the GED for an aggregate of 43 percent of students who completed, as shown in the table below.
  - The agency responded that MCI-J lost a math and science instructor, which likely contributed to the decrease.



GED Results for August 2011, MCI-J							
Writing	Social Studies	Science	Reading	Math	Total	Pass	Fail
400	420	540	500	450	2310		X
400	450	440	460	400	2150		X
420	420	460	440	380	2120		X
540	530	510	600	540	2720	X	
360	420	480	440	480	2180		X
540	510	500	460	490	2500	X	
580	560	540	710	450	2840	X	
<b>Total</b>						<b>3</b>	<b>4</b>

\*Note: A passing score is 2250 and no individual score may be below 410

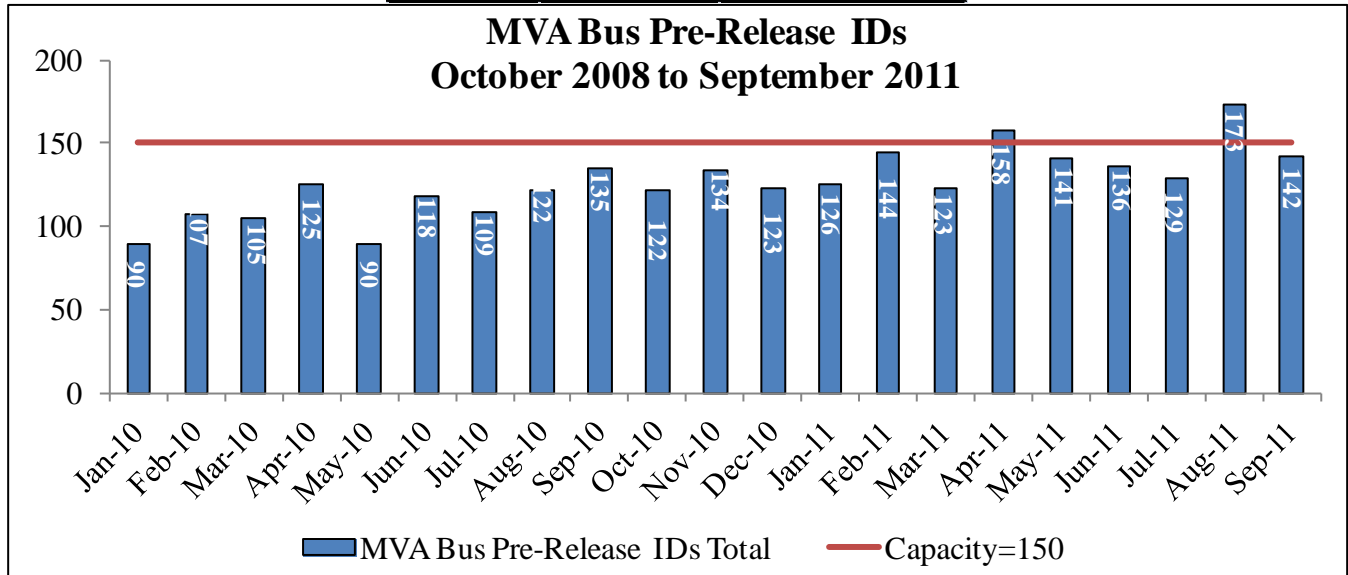
## Overtime

- **Leave Without Pay (LWOP).** In analyzing the LWOP data, Deputy Secretary Franklin determined that most of the staff on LWOP had exhausted accident leave and had gone on IWIF, as discussed previously. StateStat requested additional data on the types of injuries sustained by these employees. In researching this, DPSCS discovered that there were actually two categories of injury or illness—work-related and non-work-related—that resulted in multiple pay periods being charged as LWOP. The summary of these cases follows:
- Work related injuries. Three individuals incurred on-the-job injuries which resulted in injured hands, one of which was able to utilize the return to work program; the other two required surgery, but have subsequently returned to work.
  - An employee was on LWOP for five consecutive pay periods resulting from IWIF declaring temporary total disability for an on-the-job injury. On July 1, 2011, the employee was approved for accidental disability retirement.
  - Another individual was out for four consecutive pay periods due to psychological issues related to an on-the-job injury. The claim was submitted to IWIF but subsequently denied. The employee returned to work on May, 23, 2011.
  - A third individual, out for five consecutive pay periods, had surgery related to an old accident and could not return to work and was placed on temporary total disability.
  - Another employee suffered an on-the-job injury resulting from an inmate assault. The employee remained out for four consecutive pay periods and has subsequently returned to work.
- Non work-related injuries. All other individuals with multiple consecutive pay period absences were due to non work-related injuries which include car accidents, multiple bones broken, foot surgery, and FMLA-qualifying absences which included maternity leave and ill parents in Africa.
- **Other Factors.** In addition to sick leave, LWOP, and FMLA leave, additional overtime drivers for FY 2012 are training in service for the firearms conversion, administrative leave days granted for the Correctional Bill of Rights (CBOR) process, and the five Recovery Reduction Plan days.

## Inmate IDs

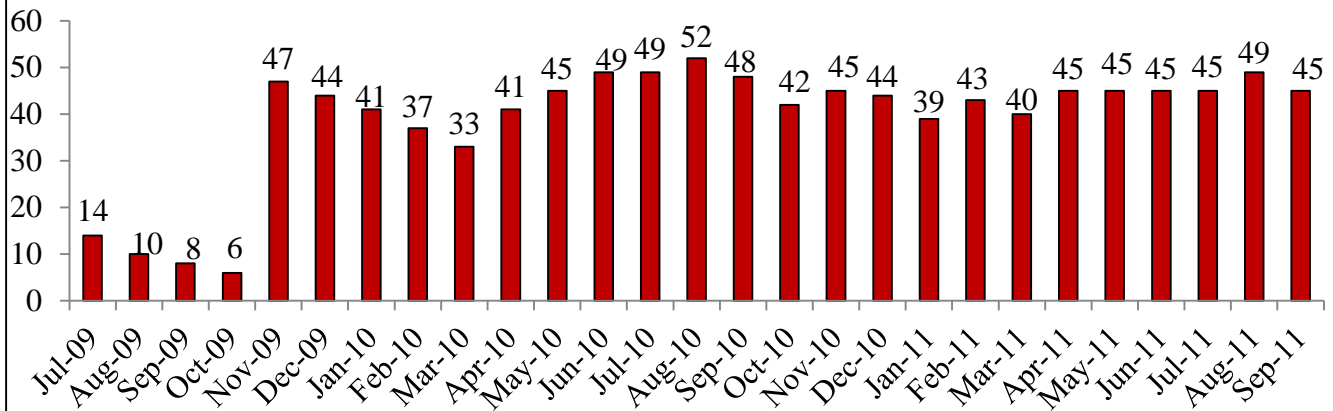
- **MVA Bus.** Verizon installed the ISDN line at MCTC on Monday, September 19<sup>th</sup>. The MVA bus was on site at MCTC and tested the ISDN line on Friday, September 23<sup>rd</sup>. On the morning of Thursday, September 29<sup>th</sup>, a Verizon technician and a representative from ITCD were on site at MCTC for the MVA bus visit. Because the ISDN line was faulty, only approximately half of the 71 inmates submitted for verification were issued IDs, for a total of 142 IDs issued in September. The next MVA bus visit at MCTC will be on Thursday, October 27<sup>th</sup>; DPSCS is prepared to discuss that visit.

September MVA Bus Schedule		
Location	Schedule	Names Submitted for Verification
BCF	9/22/2011	63
MTC	9/28/2011	64
MCTC	9/29/2011	71



- **Drivers Licensing System.** On August 19<sup>th</sup> DOC and MVA also discussed the MVA Released Inmates Identification (RIID) Program Update to establish a Driver's Licensing System (DLS) within a DOC facility. DOC will capture digital photographs and signatures of inmates that are eligible for an ID card at the DOC facility, and electronically transmit the files to the MVA. The agencies estimate that the project would take three to four months before a pilot can begin in Hagerstown.
- **Pre-Release Branch Visits.** At the MVA Stat this week MVA reported that it was planning on expanding branch visits for pre-release inmates as a way to increase inmate ID issuance. Both the Cumberland and Salisbury MVA locations were scheduled for pre-release visits on September 21, bringing the number of total locations scheduled in September to six. Based on the goal of processing 15 IDs per branch visit, MVA indicated that its target was 90 pre-release inmate IDs issued in September. However, according to the data only 45 pre-release branch IDs were issued in September.
  - The agency responded that there were no eligible inmates.

### MVA Pre-Release Branch Visit IDs Issued July 2009 to September 2011



### Contraband/IIU

- Open and Active Investigations.** The agency clarified that open and active investigations are those cases which have not yet received a disposition or been adjudicated in court. Although a case is reported as open and active to StateStat, from an investigative perspective the IIU has closed a majority of the cases considered to be “open.” The IIU closes a case when a charging document is obtained or when an investigation determines that there is no basis for prosecution (“closed to file”). The following is a breakdown, by region, of the status of the open cases through October 3<sup>rd</sup>. Most of the open and active cases are in the Baltimore Region (319), and 103 are in other regions. This does not mean that the IIU has not closed these cases; it simply means that the cases have not received court dispositions. Of the open cases, 26 have outstanding warrants.

- The agency responded that it would disaggregate some of the data for the next meeting.

<i>Case Status</i>	<i>Baltimore Region</i>	<i>Other Regions</i>
Outstanding Warrants (Warrants have been Issued but not yet Served)	20	6
Warrants Issued and Served but are Awaiting Court or the Assignment of a Court Date	59	15
Cases in Which Charging Documents need to be Applied For/Charging Documents have been Applied for and Not Yet Issued	143	57
Cases Closed to File by IIU because they were forwarded to the State's Attorney to Obtain a Criminal Information on the basis that the offender has an open felony case in Circuit Court in addition to their cell phone case	78	
Cases Closed to File/No Criminal Charges Pursued because of Evidence Issues (There was no evidence/Evidence was destroyed)	7	3
Cases Closed to File Because the Witness Cannot be Reached (Witness resigned/retired/etc.)	4	
Cases Handled Administratively (not criminally) because Employees were Involved	3	3
Cases that have already gone to Court in which the Defendant had been released since the incident and then Failed to Appear, causing a Bench Warrant to be Issued	1	1
Cases Closed to File by IIU for Other Reasons not mentioned above because prosecution would be improbable	4	4
State's Attorney Declined to Prosecute (reasons broken down below) = 12 Total <ul style="list-style-type: none"> <li>• Inmate was a "Lifer" = 1</li> <li>• Phone found in a Common Area = 1</li> <li>• Double Cell Occupancy = 2 <ul style="list-style-type: none"> <li>• Miscellaneous = 8</li> </ul> </li> </ul>		12
Unknown Suspects – Case Handled by Task Force (no one to charge at this time)		2
<b><i>TOTAL CASES</i></b>	<b><i>319</i></b>	<b><i>103</i></b>

**Office of Treatment Services**

- **HIV Tests.** The percentage of voluntary inmate HIV testing has been decreasing. Meanwhile, the percentage of HIV tests secondary to symptoms has remained relatively steady.
  - The agency responded that an HIV designee in Jessup left, and that they would look into other possible explanations.

