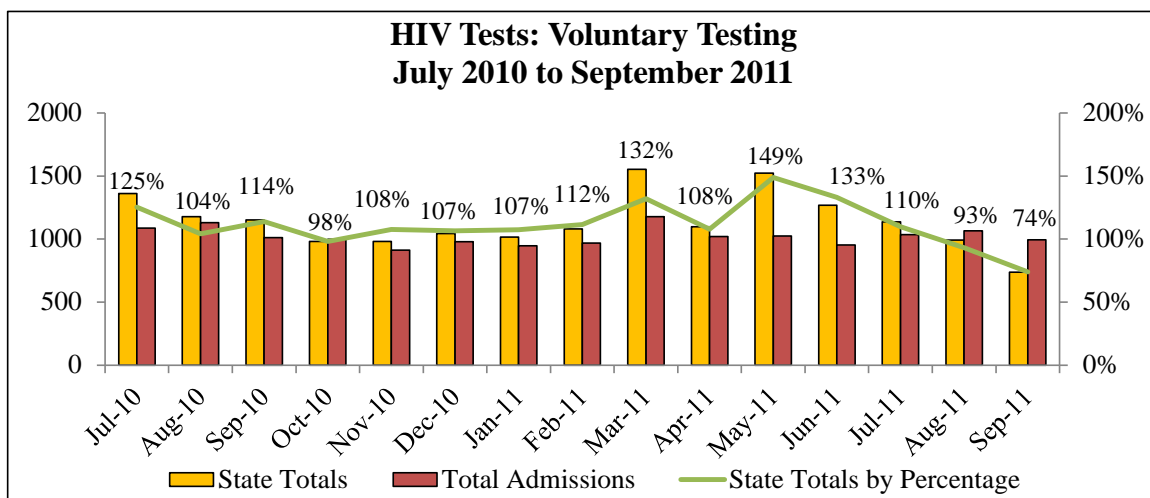


Meeting Summary

Following is a summary of issues discussed at the DPSCS—DOC Stat on November 10, 2011. Analysis is provided by StateStat.

Follow Up

- Registering at One-Stops.** As discussed in the previous DOC StateStat meeting, New Jersey requires supervised inmates to register at a One-Stop upon release. Since that meeting, the Department has been in contact with the Community Programs Division of the NJ State Parole Board (NJSPB) and the New Jersey Local Workforce Development (NJLWD) One-Stop office. The NJ Parole Board indicated that parole policy mandates that upon the "first visit" arrival of newly released inmates to their respective local District Parole Office, they will be instructed to report to, and register with, the corresponding One-Stop. The Department stated that it will continue to reach out to New Jersey officials to learn more about New Jersey's policy and program surrounding One-Stops as well as its effectiveness to find out how this program could be implemented in Maryland.
- HIV Testing.** As shown in the charts below, HIV tests decreased in September. The Department explained that this is because the regional (Jessup) Infectious Disease nurse resigned in late August. The position was filled in late September, and, as a result, the October numbers are back up. The Department also posited that in Baltimore, custody staff did not bring the inmates in for HIV testing. In the follow up response the Department confirmed that custody staff does bring the inmates down for both HIV testing and education. In September, custody staff brought the inmates down to medical for the education component and returned the group the next day for the testing. In the past, the Department had conducted the education and offered the testing immediately after the educational class was completed. This method is more effective in getting a greater number of inmates choosing to be tested. The Department will make sure it follows the latter method.



- IIU Cases Needing Charging Documents.** IIU previously reported that as of October 3, 2011, 143 cases needed charging documents—either to be applied for by IIU, or to be issued by the

courts. A breakdown of those cases follows, and is highlighted in the chart below, provided by the agency:

- 82 cases – charging documents were in the pipeline and have since been issued
- 20 cases – IIU has applied for charging documents and is awaiting issuance by the courts.
- 41 cases— IIU is in the process of applying for charging documents

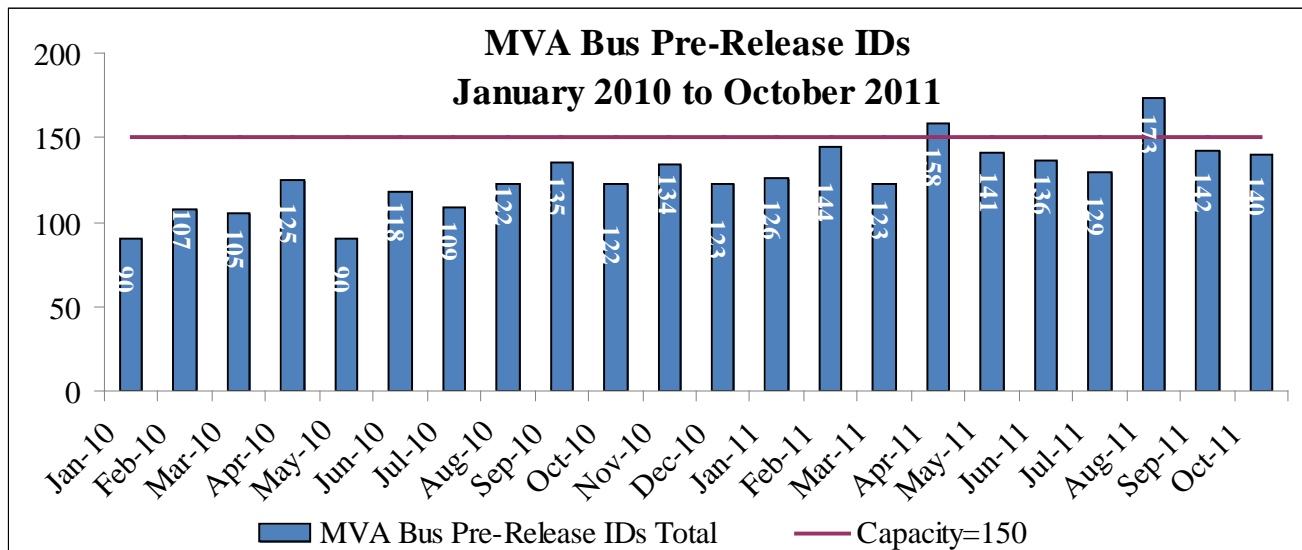
The agency is looking into whether any outstanding warrants involve individuals currently in custody.

<i>Case Status</i>	<i>Baltimore Region</i>	<i>Other Regions</i>
Outstanding Warrants (Warrants that have been Issued but not yet Served)	20	6
Warrants Issued and Served but are Awaiting Court or the Assignment of a Court Date	59	15
Cases in Which Charging Documents need to be applied for/Charging Documents have been Applied for and not yet Issued. Breakdown of the 143 as of October 30, 2011 is below:	143	57
82 of the 143 cases have since had charging documents issued.	82	
20 of the 143 cases have had charging documents applied for.	20	
41 of the 143 cases still remain in which charging documents need to be applied for.	41	
Cases Closed to File by IIU because they were forwarded to the State's Attorney to obtain Criminal Information on the basis that the offender has an open felony case in Circuit Court in addition to their cell phone case. Breakdown of TOTAL as of October 30, 2011 is below.	78	
24 of the 78 cases have been charged at the Circuit Court Level	24	
Of the 24 cases charged at the Circuit Court Level, 2 have received Dispositions in Circuit Court	2	
Cases Closed to File/No Criminal Charges Pursued because of Evidence Issues (There was no evidence/Evidence was destroyed)	7	3
Cases closed to file because the Witness Cannot be Reached (Witness Resigned/Retired/etc.)	4	
Cases Handled Administratively (not criminally) because Employees were Involved	3	3
Cases that have already gone to Court in which the Defendant had been released since the incident and then Failed to Appear, causing a Bench Warrant to be Issued.	1	1
Cases Closed to File by IIU for Other Reasons not mentioned above because prosecution would be improbable.	4	4
State's Attorney Declined to prosecute (reasons broken down below) = 12 Total		
Inmate was a "Lifer" = 1 Phone found in Common Area = 1 Double Cell Occupancy = 2 Miscellaneous = 8		12
Unknown Suspects = Case Handled by Task Force (no one to charge at this time.		2
TOTAL CASES	319	103

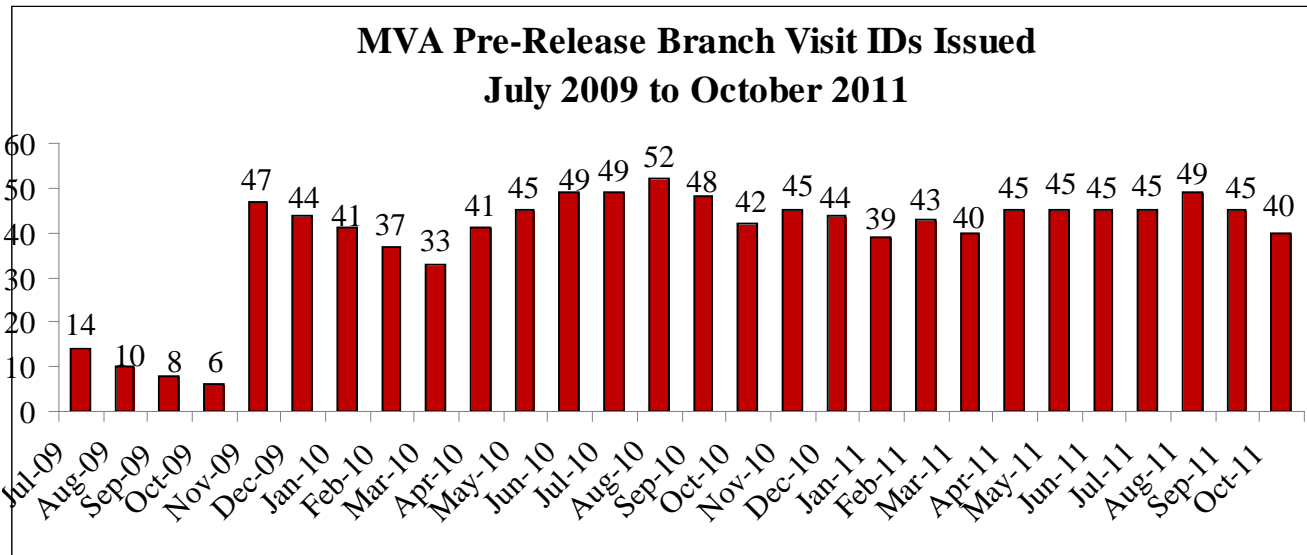
Inmate IDs

- MVA Bus.** At the previous DOC Stat, the agency reported that sluggish performance by Verizon's newly-installed ISDN line at MCTC caused only 36 of the 71 inmates submitted for verification to be issued IDs, for a total of 142 IDs issued in September. The panel discussed with the agency options for resolving issues related to the slow speed of the ISDN line, including the possibility of adding a second line. The next MVA bus visit at MCTC took place on Thursday, October 27th and resulted in 41 IDs; a total of 140 IDs were issued in the three locations. Seventeen inmates were turned away at MCTC due to lack of sufficient time to process them. The next MVA bus visit at MCTC will take place on November 30.

October MVA Bus Results	
Location	IDs Issued
BCF	46
MTC	53
MCTC	41

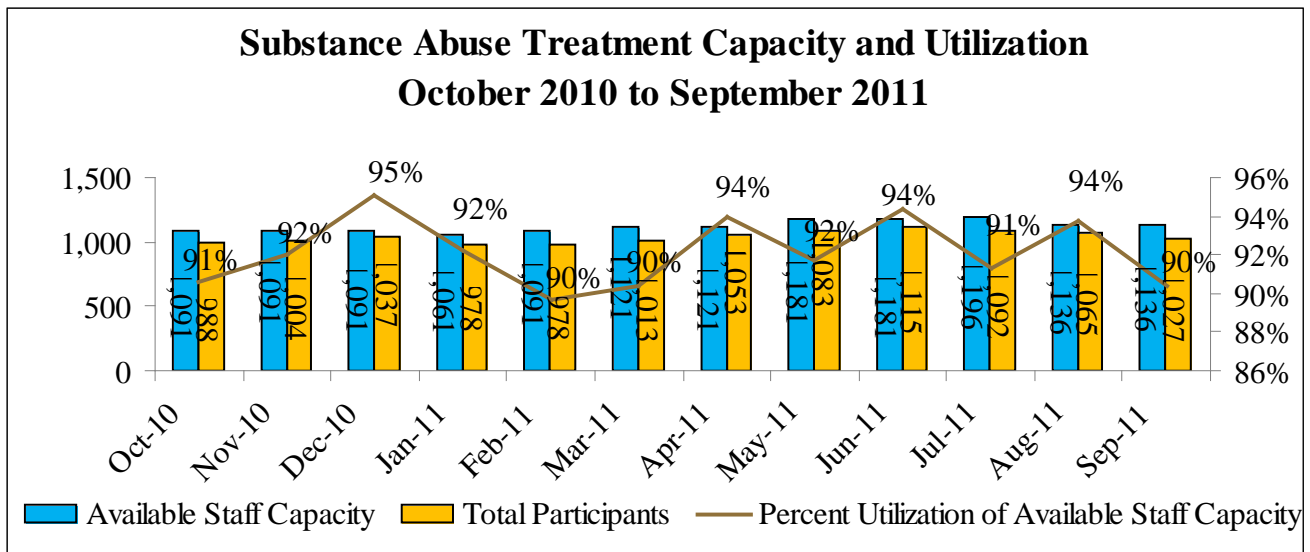


- Drivers Licensing System.** At the previous Stat the panel discussed a plan in which DOC capture digital photographs and signatures of inmates that are eligible for an ID card at the DOC facility, and electronically transmit the files to the MVA. The agency (DOC) indicated that it needed to resolve technical issues related to signature pads and cameras but saw no other internal impediments to starting the program quickly. It reported at this meeting that it had resolved the outstanding issues.
- Pre-Release Branch Visits.** In September, pre-release MVA branch visits were expanded to include the Cumberland and Salisbury MVA locations. Because only a handful of inmates were eligible in those locations, a minimal number of IDs were issued in Cumberland and Salisbury, and the statewide total of pre-release branch visit IDs declined to 45 in September. In October, the statewide total declined again, to 40 (the lowest total since March), a drop the agency attributes to a normal fluctuation in eligible inmates.



Substance Abuse Treatment Services

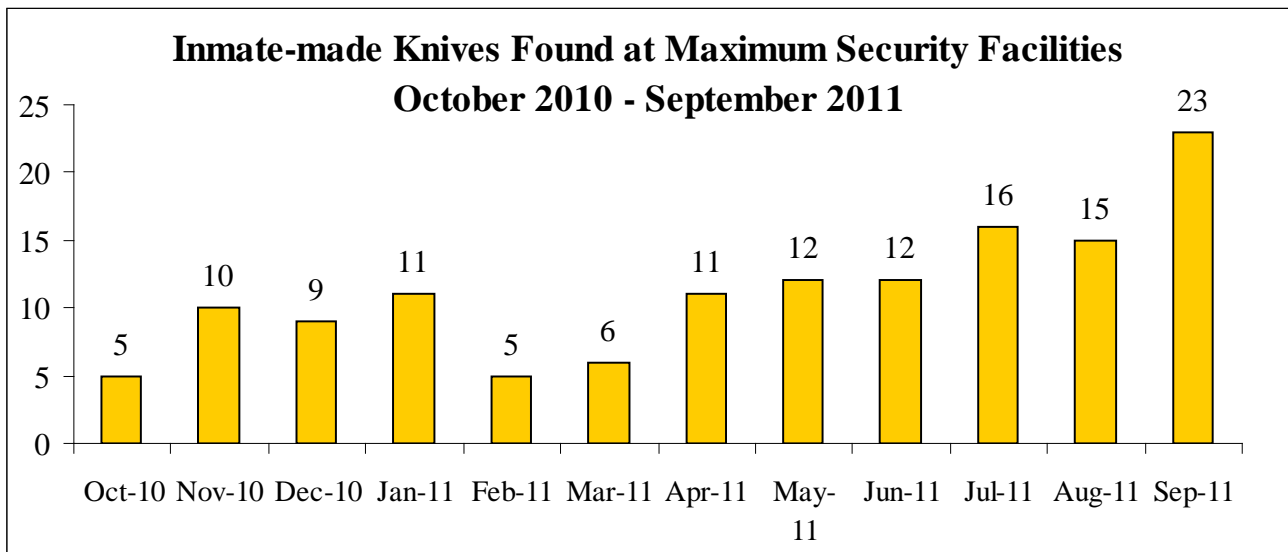
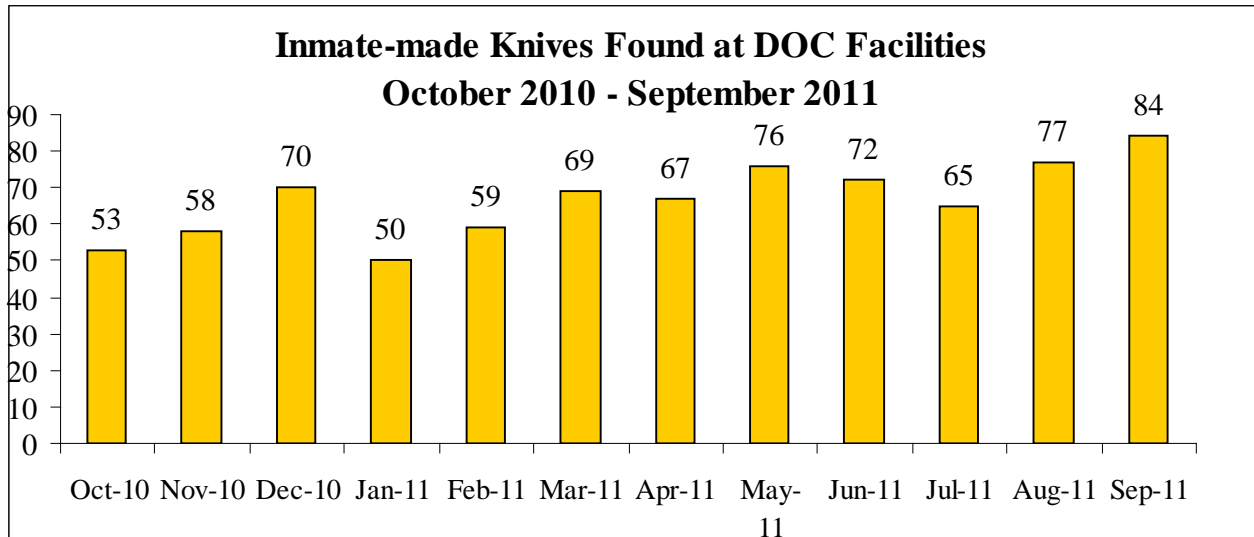
- Drop in Utilization and Slots Filled.** In September, the total number of participants in substance abuse treatment and the percent utilization of available staff capacity both fell to their lowest levels since March. Since reaching its 12-month high-water mark in June 2011, the number of participants in treatment has fallen by 88 – from 1,115 to 1,027 – including a 58-participant decrease in Therapeutic Communities and a 30-participant decrease in outpatient treatment. Available staff capacity has dropped by 60 – from 1,196 to 1,136 – since July. The agency stated at this meeting that staff capacity dropped again in October, while total participants increased slightly, pushing the percent utilization to 97 percent.

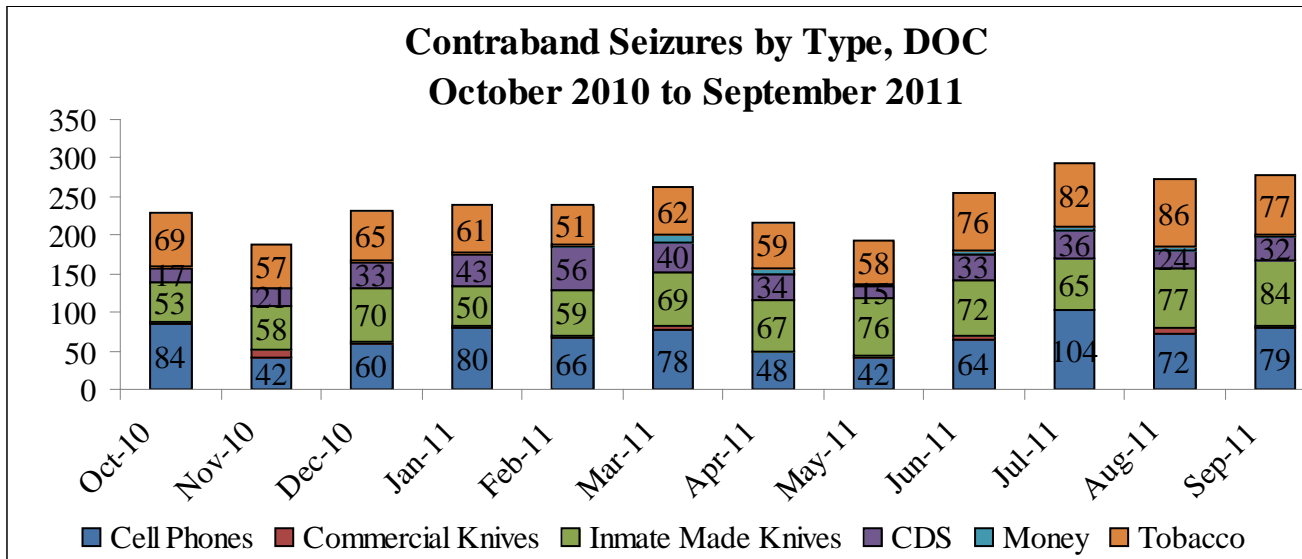


Contraband

- Inmate-made Knives.** In September, the number of inmate-made knives found on inmates or in DOC facilities increased to its highest level since January 2010. The upward trend has been most

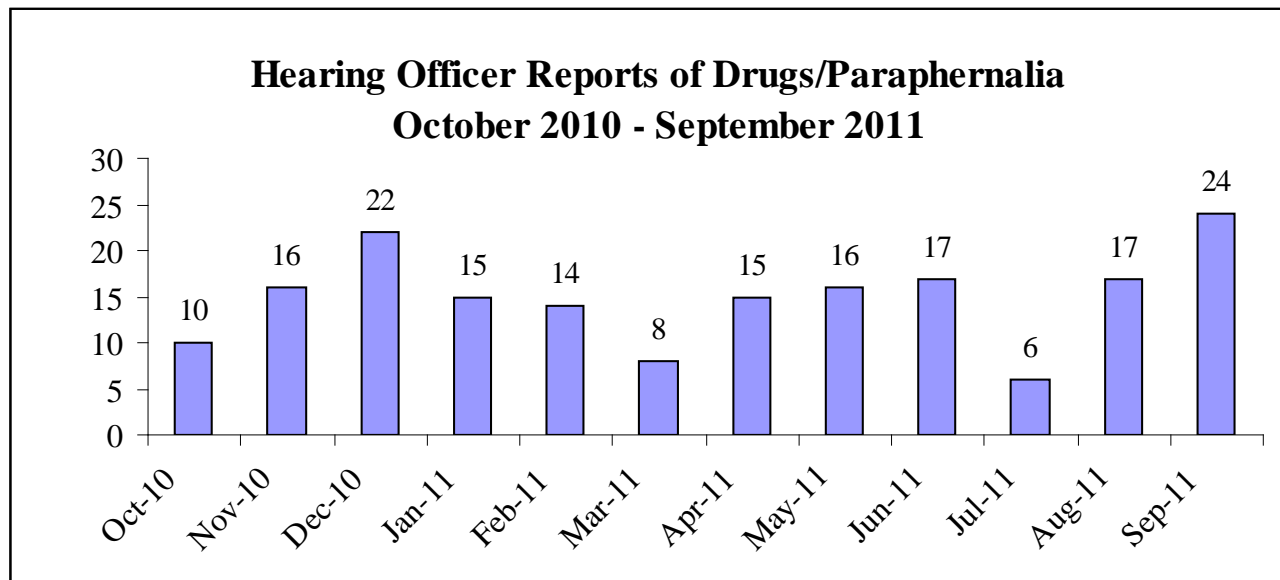
apparent at maximum security facilities, where the 23 knives recovered in September represent a 53 percent increase over the previous month and the largest number recovered at those facilities since tracking began. Other contraband seized at DOC facilities dropped slightly in September, and inmate-made knives became the largest portion of contraband seized for the first time since May 2011. The Department stated that it has been very active in searching for such contraband, and would look further into potential causes for the increase.





Safety

- Hearing Officer Reports.** DOC monitors the reports issued by in-facility hearing officers. In September, hearing officer reports of drugs/paraphernalia reached their highest level in 19 months. The agency stated that the increasing reports are largely related to the fact that the agency now tests for Suboxone, a drug that can be disguised in numerous ways inside facilities.



Sick Leave

- **Increase at JCI.** While overall sick leave usage at DOC held steady over the most recent reporting period, sick leave usage at JCI increased by 59 percent to its highest level since January 2011. Overtime use at JCI increased slightly during the period but fell during the following period. The Department pledged to look into potential causes for the increase.

