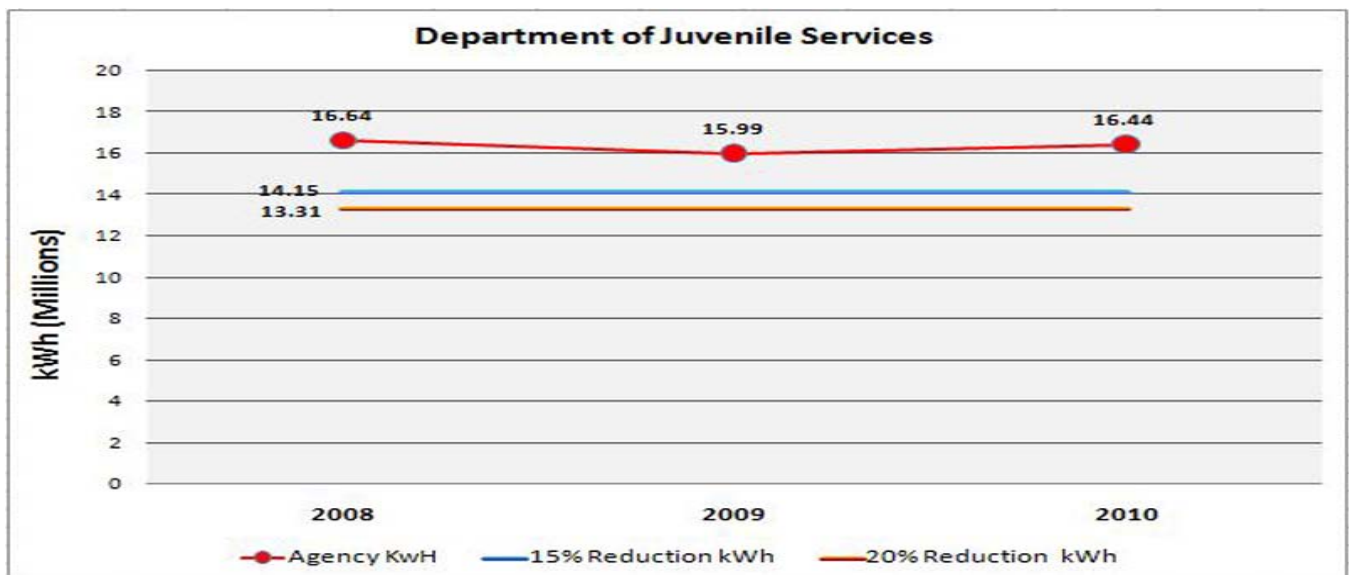
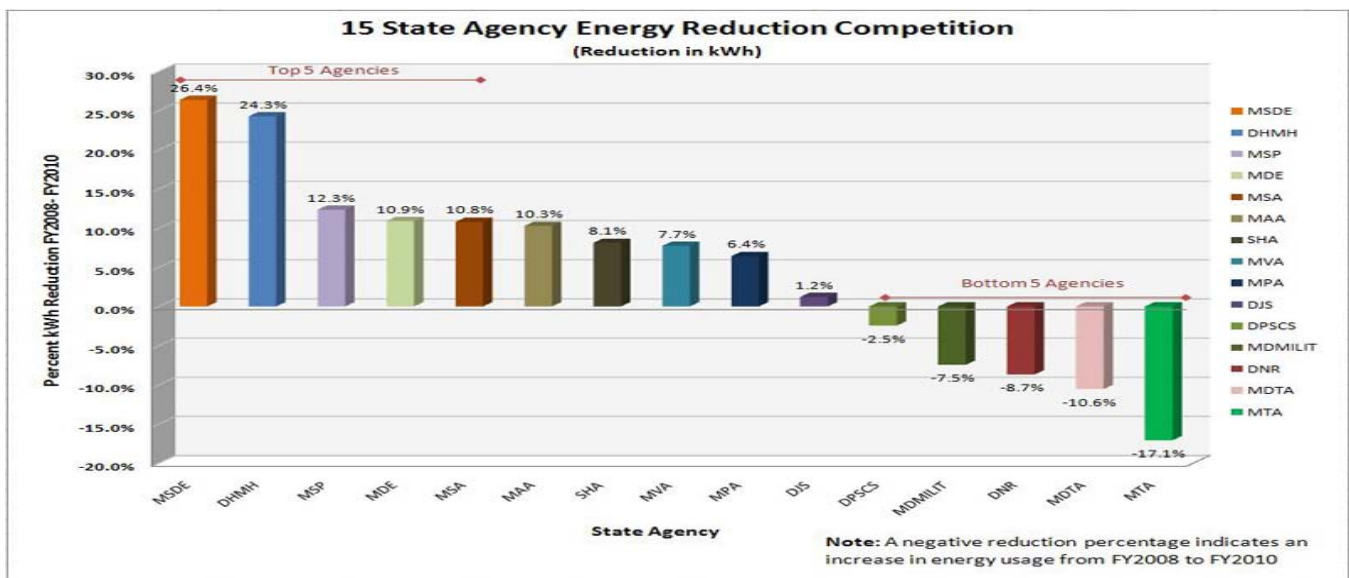


Meeting Summary

Following is a summary of issues discussed at the DJS Stat on December 16, 2011. Analysis is provided by StateStat and the Governor's Delivery Unit (GDU).

Follow-Up

- Energy/Recycling.** It came to the attention of StateStat, during a Department of General Services (DGS) Stat meeting, that there were concerns about heavy energy consumption and the lack of recycling taking place in DJS offices. StateStat was made aware recently that DJS has an overall recycling plan in the works. However, the Maryland Department of the Environment (MDE) has not yet determined if all local DJS offices have written and submitted an individual office recycling plan to the DJS Recycling Coordinator for the coordinator to keep on file. Energy companies will be working with DJS as well.



Placements

- **Juvenile Justice Monitoring Unit (JJMU) 3rd Quarter 2011 Report.** On December 13, 2011, the JJMU released their 3rd Quarter Report on DJS facilities. Nine facilities are mentioned in the report. Due to the length of the report, Cheltenham Youth Facility will be addressed in this meeting.

Cheltenham Youth Facility (CYF)-

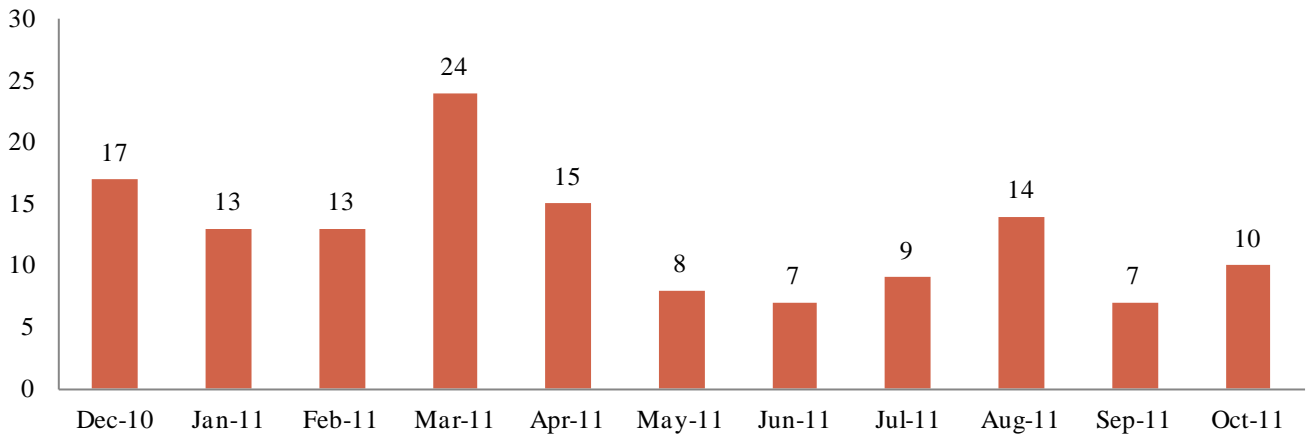
Summary of Critical JJMU Findings:

- A. Two youths escaped from CYF on July 15. They were apprehended an hour-and-a-half later, three miles from the facility. A special report was done by the JJMU previously on this event.
- B. The number of reported instances of aggression at CYF is higher than 2010 and lower than the first quarter of 2011.
- C. The dilapidated residential cottages at CYF are an inappropriate physical environment for youth. They continue to be severely overcrowded.
- D. Forty to fifty percent of youth at CYF are waiting to begin treatment elsewhere. This problem has continued for years.
- E. The facility is not fully staffed. Mandatory overtime continues to be used.
- F. Comprehensive security camera coverage has not been achieved.

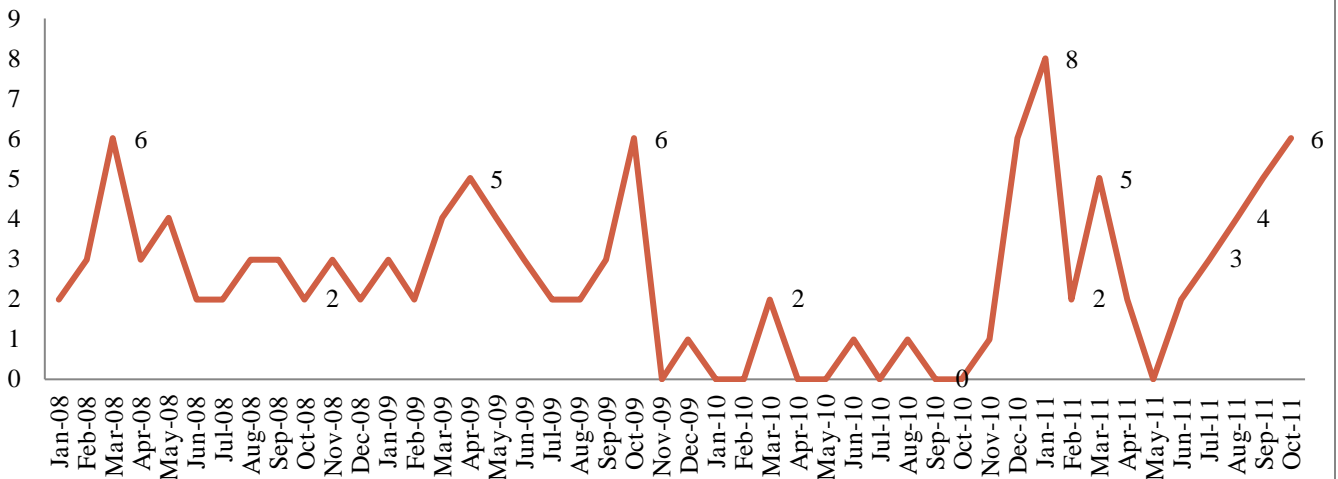
Summary of DJS' Responses:

- A. DJS responded previously to the escapes at CYF and this matter was discussed at StateStat.
- B. DJS did not specifically address the JJMU in terms of the aggressive incidents at the facility.
- C. In response to the problems with the physical facility, DJS states that: all bedrooms have been fitted with suicide prevention beds; the maintenance department is evaluating the possibility of moving the central laundry to a more appropriate area; the roofs have been approved for replacement and are in the procurement process; maintenance has made repairs to the windows on cottages as well as some of the floors; Rennie, Henry, and Cornish Cottage bedrooms and hallways have all been painted in addition to specific classrooms in the school and all of the bathrooms in each classroom; Cottage Managers have been tasked to ensure that inspections are being conducted and that cottages are properly cleaned at all times. Cottage managers have also been instructed to remove excess materials from cottages and place them in the warehouse.
- D. DJS did not specifically address the JJMU in terms of the pending placement population; however this has been an ongoing topic at StateStat and they are working to reduce pending placement times at all facilities.
- E. DJS made a general statement about concerns about staffing and they are working to streamline the hiring process so that facilities are fully staffed.
- F. DJS reports that they are currently in the process of installing a comprehensive digital CCTV system at Cheltenham to include the addition of 129 cameras adding to the existing 49 cameras already installed. This procurement is now complete and it is anticipated that the new installation will begin in January 2012 with the new system operational by March 2012.

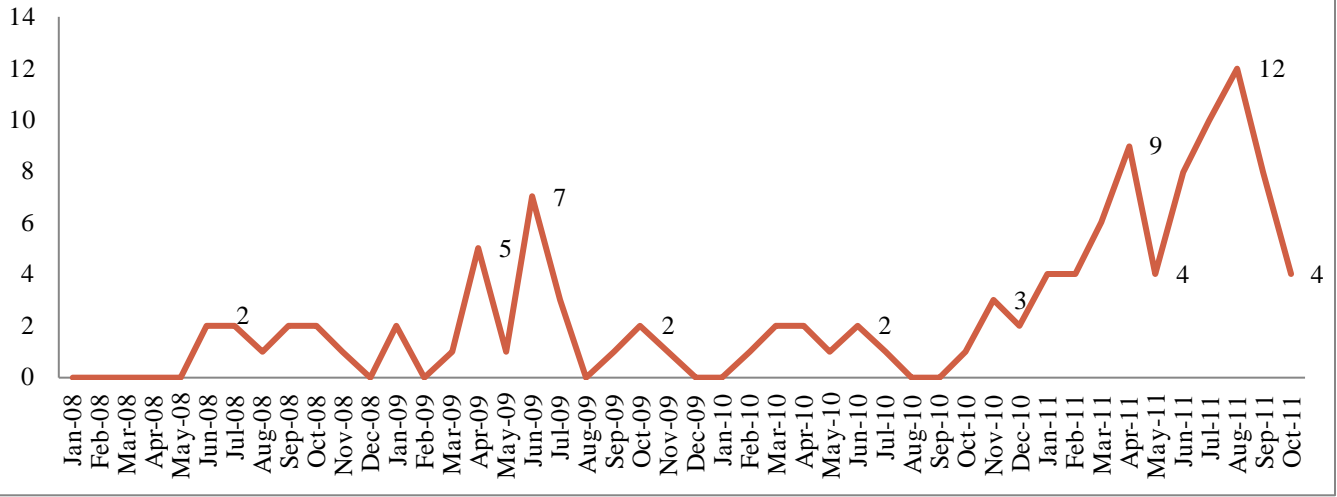
Cheltenham, Youth-on-Youth Assaults with Injuries (Requiring On Grounds Care)



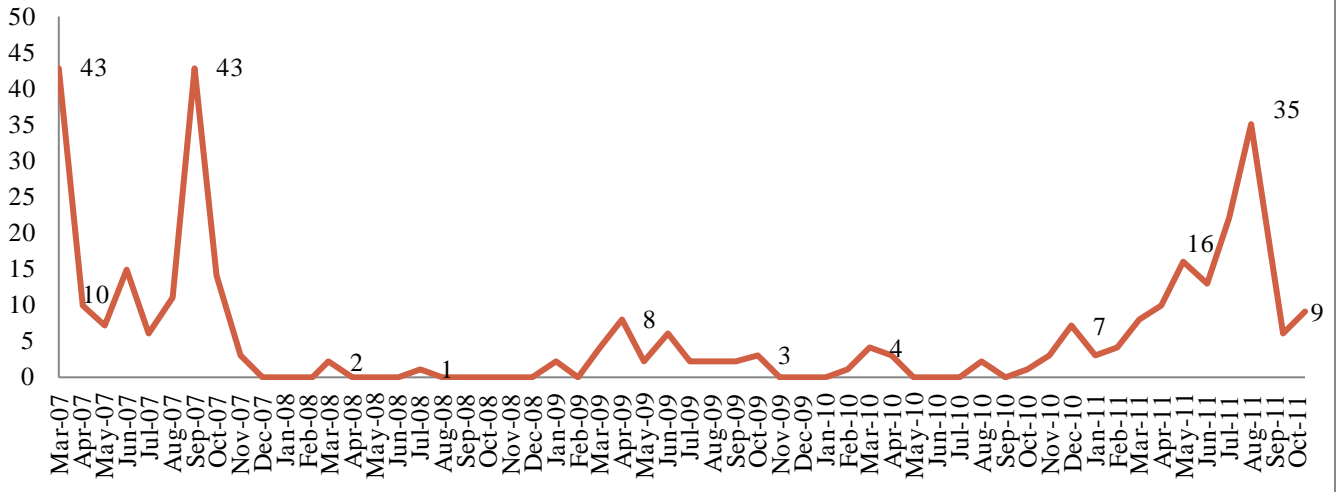
Cheltenham, Youth-on-Staff Assaults

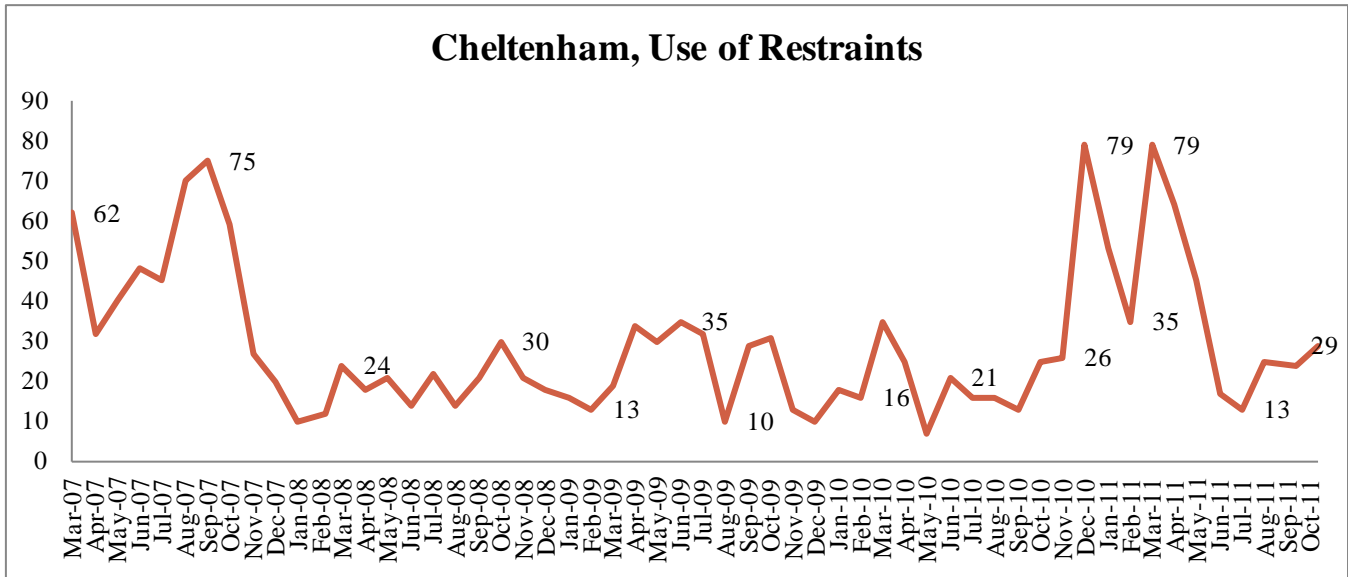


Cheltenham, Group Disturbances

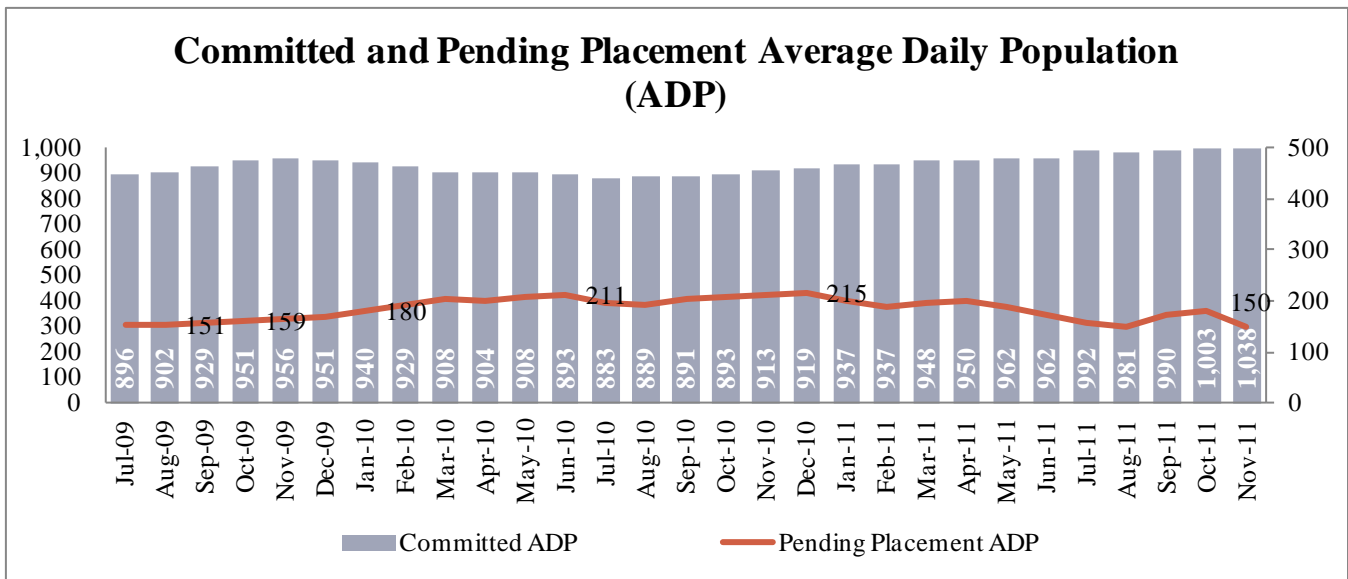


Cheltenham, Use of Seclusion





- Pending Placement.** The chart below shows the average daily population for youths that are committed as well as those pending placement. DJS was asked to provide a timeline for the “Assessment Center” as well as goals and actions for what will be done to reduce the pending placement population. DJS has provided a timeline for the actions that will be occurring in the coming months in relation to the pending population total.



Evidence Based Services

- Utilization.** The following chart details utilization of Evidence Based Services by DJS through December 6, 2011. The panel will note that utilization of active EBS slots is at **82 percent** (296 filled/363 total active slots). DJS reports that families have not been participating and parents are not cooperating.

Description	TOTAL	MST	FFT	MTFC-A
# of Contracted Slots	385	115	268	2
# of Slots Offline [staff vacancies or slots not online]	22	10	12	0
# of Active Slots	363	105	256	2
% of Contracted Slots Active	94.0%	91.0%	96.0%	100.0%
# of Active Cases/Families	296	77	218	1
% of Active Slots Filled	82.0%	73.0%	85.0%	50.0%
# of Vacancies	67	28	38	1
# of Youths Pending Admission	51	15	36	0
# of Projected Active Youth/Families (Active Youth/Families plus Youth/Families pending admission)	332	92	254	1
% of Contracted Slots Filled	77.0%	67.0%	81.0%	50.0%
Total as of December 6, 2011				